



5022 South Garland Street, Littleton, CO 80123 - All Levels



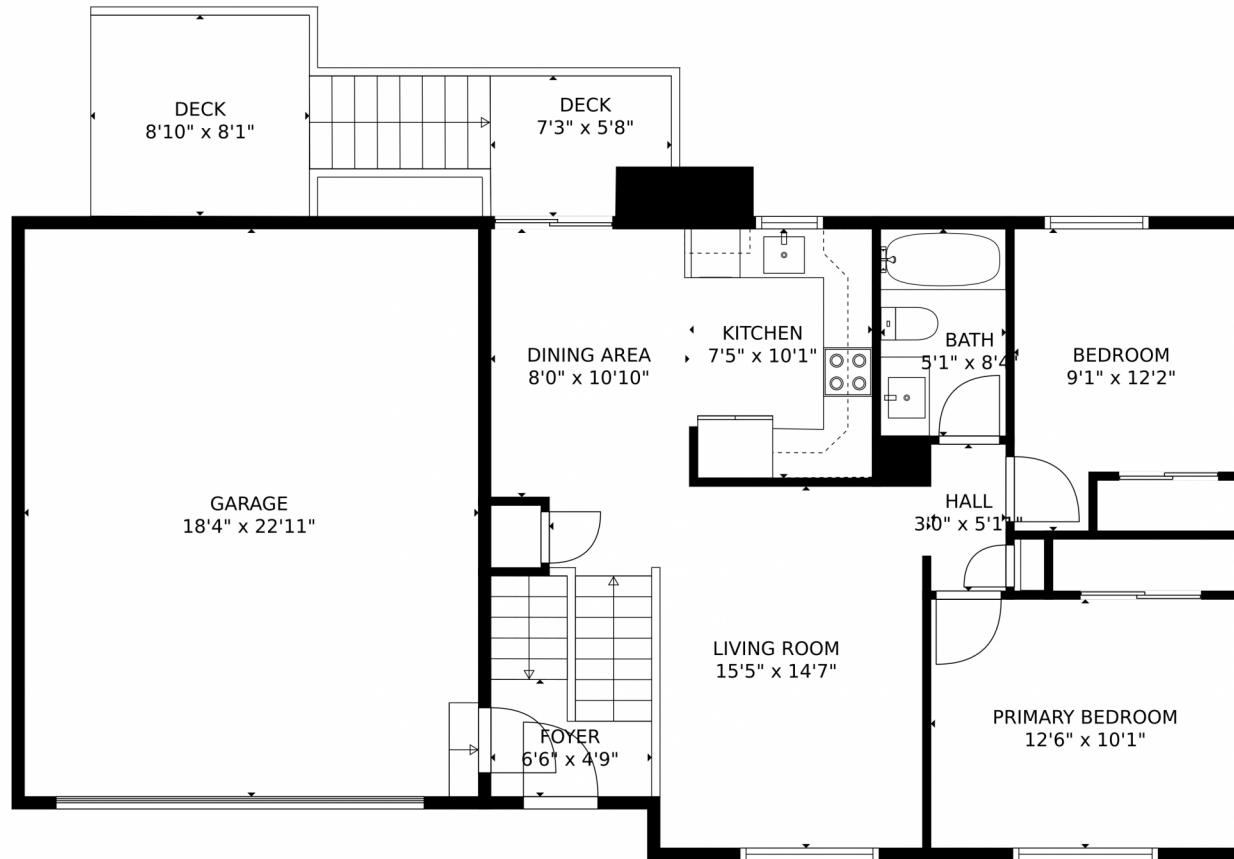
Single Family
 1567 SQFT
 3 Beds
 2 Baths
 2 Car



Jordan Kermes
 952-956-2958
jkermes@wedgewoodhomesrealty.com
<https://colorado.wedgewoodhomesrealty.com>



5022 South Garland Street, Littleton, CO 80123 – Main Level



GROSS INTERNAL AREA
Below Ground: 694 sq. ft. FLOOR 2: 741 sq. ft.
EXCLUDED AREAS: FIREPLACE: 5 sq. ft. GARAGE: 420 sq. ft. DECK: 136 sq. ft.
TOTAL: 1435 sq. ft.
MEASUREMENTS CALCULATED BY V1Photos.COM ARE DEEMED HIGHLY RELIABLE BUT NOT GUARANTEED.



Disclaimer: Sizes and Dimensions are Approximate, Actual May Vary.



Jordan Kermes

952-956-2958

jkermes@wedgewoodhomesrealty.com

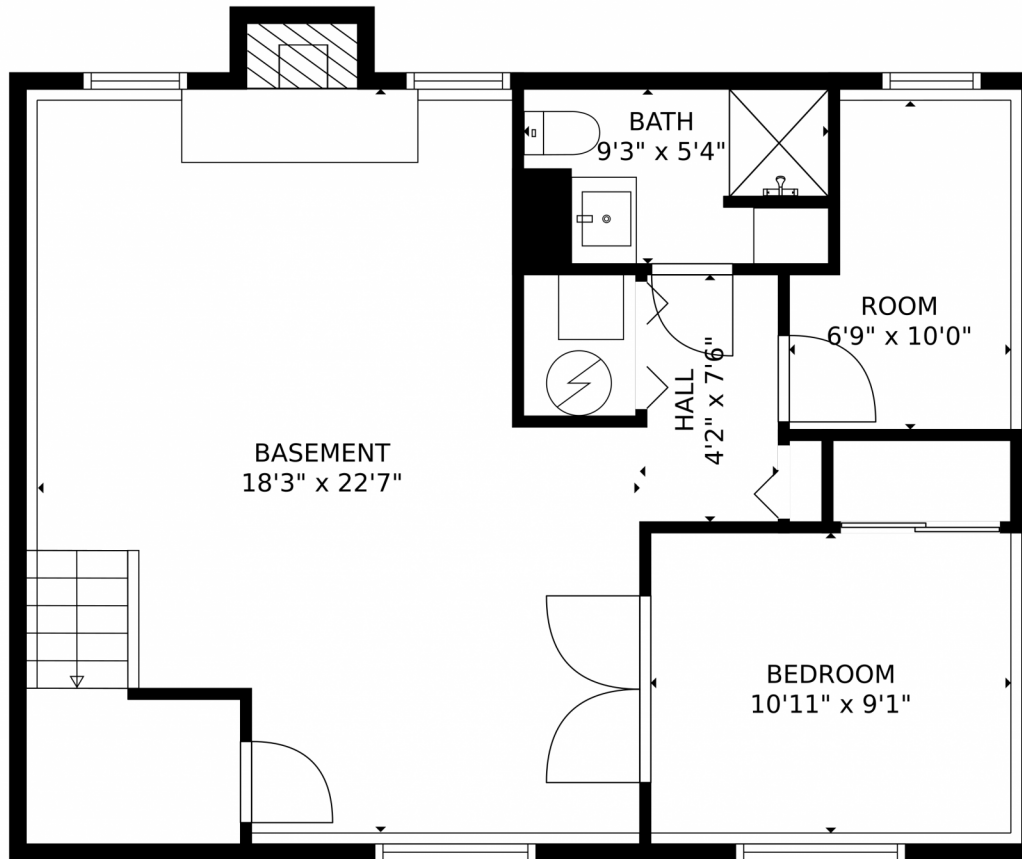
<https://colorado.wedgewoodhomesrealty.com>



Scan code
for more
property
details



5022 South Garland Street, Littleton, CO 80123 – Lower Level



GROSS INTERNAL AREA
Below Ground: 694 sq. ft. FLOOR 2: 741 sq. ft.
EXCLUDED AREAS: FIREPLACE: 5 sq. ft. GARAGE: 420 sq. ft. DECK: 136 sq. ft.
TOTAL: 1435 sq. ft.
MEASUREMENTS CALCULATED BY V1Photos.com ARE DEEMED HIGHLY RELIABLE BUT NOT GUARANTEED.



Disclaimer: Sizes and Dimensions are Approximate, Actual May Vary.



Jordan Kermes

952-956-2958

jkermes@wedgewoodhomesrealty.com

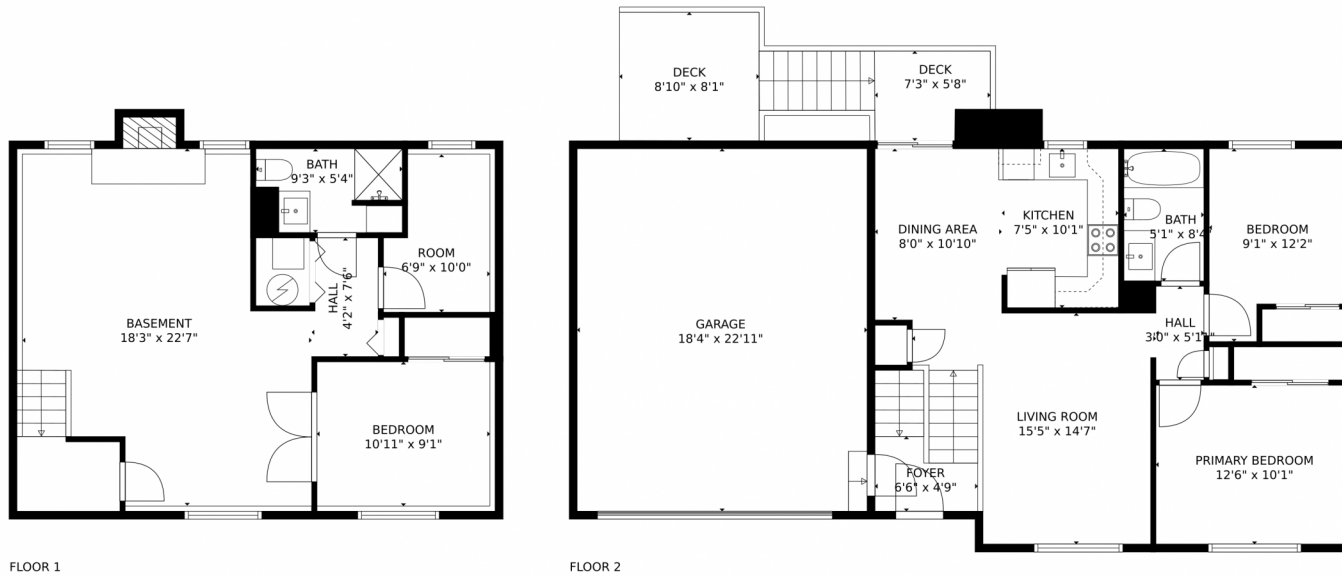
<https://colorado.wedgewoodhomesrealty.com>



Scan code
for more
property
details



5022 South Garland Street, Littleton, CO 80123 – All Levels



GROSS INTERNAL AREA
Below Ground: 694 sq. ft, FLOOR 2: 741 sq. ft
EXCLUDED AREAS: FIREPLACE: 5 sq. ft, GARAGE: 420 sq. ft, DECK: 136 sq. ft
TOTAL: 1435 sq. ft
MEASUREMENTS CALCULATED BY V1Photos.com ARE DEEMED HIGHLY RELIABLE BUT NOT GUARANTEED.



Disclaimer: Sizes and Dimensions are Approximate, Actual May Vary.



Jordan Kermes

952-956-2958

jkermes@wedgewoodhomesrealty.com

<https://colorado.wedgewoodhomesrealty.com>



Scan code
for more
property
details

