



 Single Family

 908 SQFT

 2 Beds

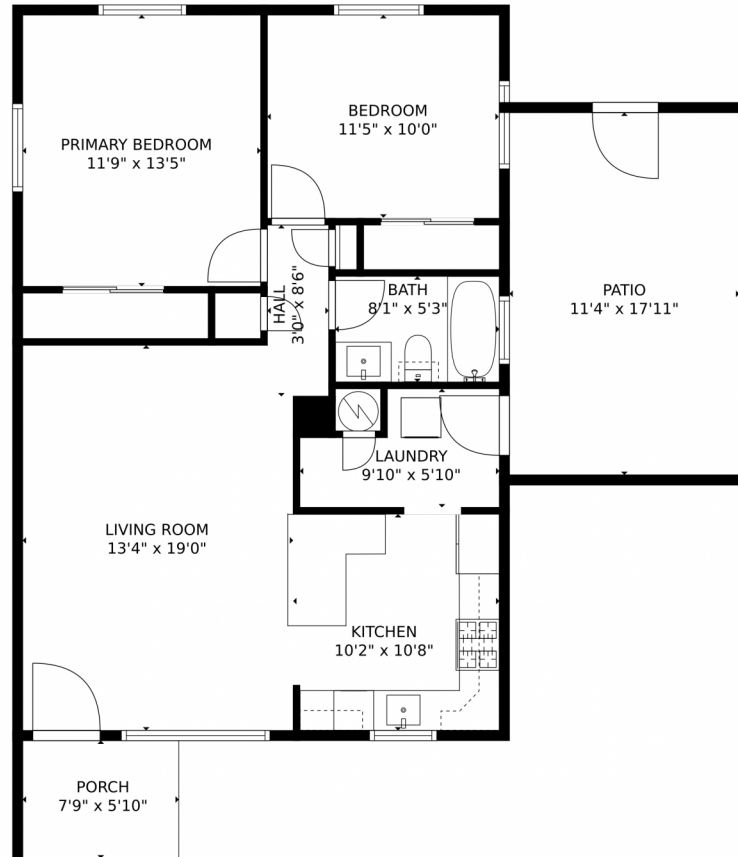
 1 Baths



Taylor Haas
303-665-7368
taylorh@coloradorpm.com
<https://www.coloradorpm.com/available-rental-properties-denver>



3304 Jasmine Street, Denver, CO 80207 – Main Level



GROSS INTERNAL AREA
FLOOR 1: 829 sq. ft.
EXCLUDED AREAS: PORCH: 45 sq. ft., PATIO: 203 sq. ft., UNDEFINED: 5 sq. ft.
TOTAL: 829 sq. ft.
MEASUREMENTS CALCULATED BY V1Photos.COM ARE DEEMED HIGHLY RELIABLE BUT NOT GUARANTEED.



Disclaimer: Sizes and Dimensions are Approximate, Actual May Vary.



Taylor Haas
303-665-7368
taylorh@coloradorpm.com
<https://www.coloradorpm.com/available-rental-properties-denver>



Scan code
for more
property
details

