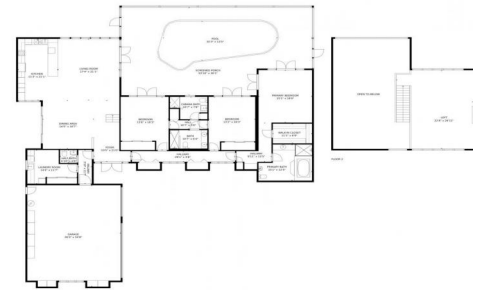




3201 Northwest 112th Avenue  
Coral Springs, FL 33065



3201 Northwest 112th Avenue, Coral Springs, FL 33065 - All Levels



Single Family



3736 SQFT

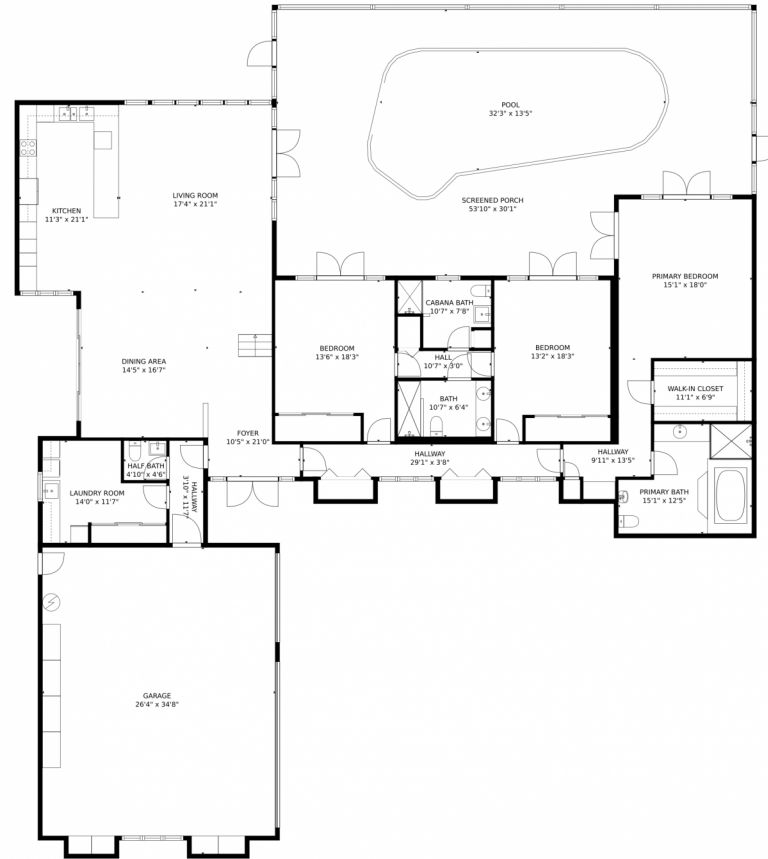


**Anthony Nastase**  
954-775-5165  
anthony@tropicalspringsrealty.com



Scan code  
for more  
property  
details

# 3201 Northwest 112th Avenue, Coral Springs, FL 33065 – First Level



GROSS INTERNAL AREA  
FLOOR 1: 2702 sq. ft, FLOOR 2: 938 sq. ft  
EXCLUDED AREAS: GARAGE: 883 sq. ft, SCREENED PORCH: 1073 sq. ft, OPEN TO BELOW: 745 sq. ft,  
BALCONY: 173 sq. ft  
TOTAL: 3640 sq. ft  
MEASUREMENTS CALCULATED BY V1Photos.com ARE DEEMED HIGHLY RELIABLE BUT NOT GUARANTEED.



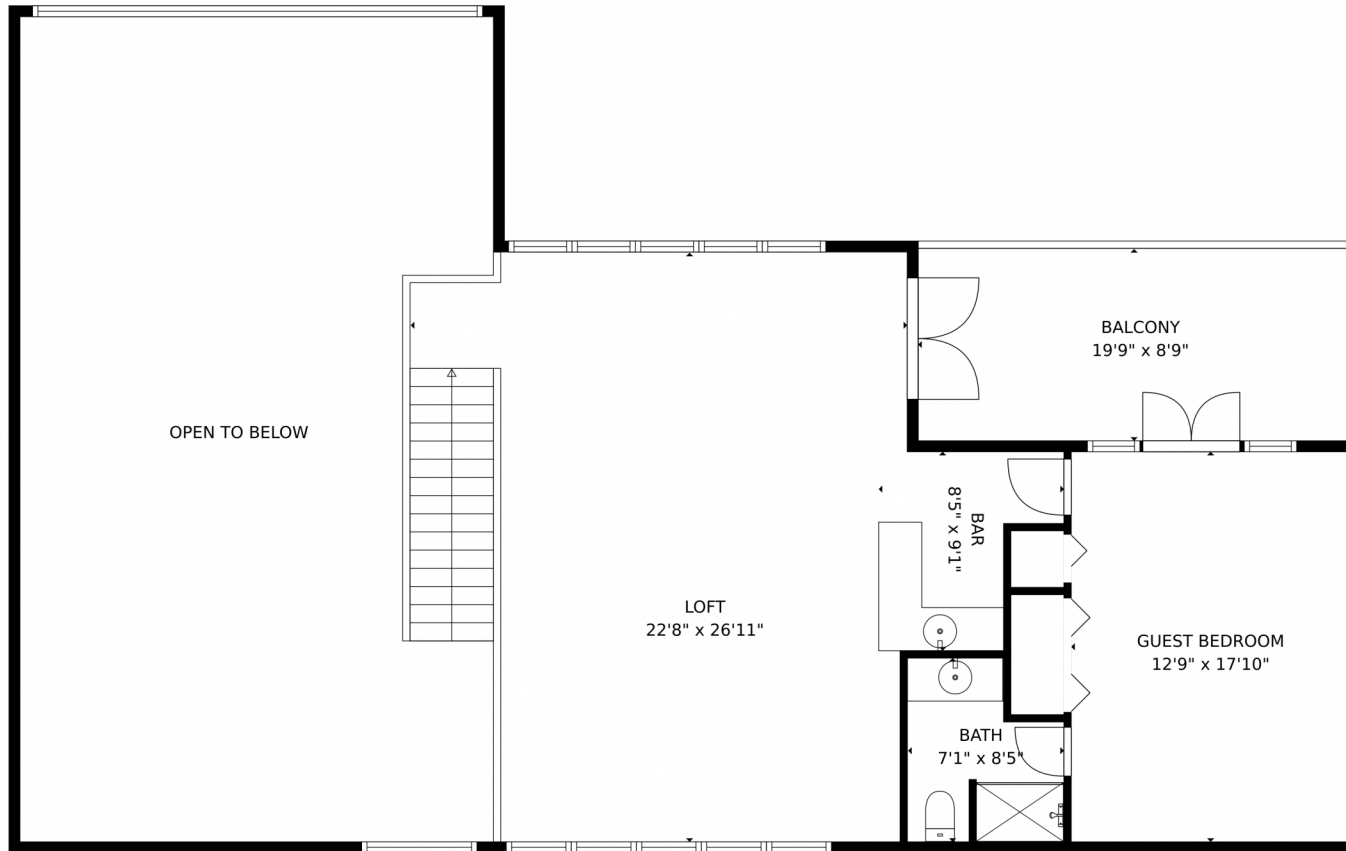
Disclaimer: Sizes and Dimensions are Approximate, Actual May Vary.



**Anthony Nastase**  
954-775-5165  
anthony@tropicalspringsrealty.com



3201 Northwest 112th Avenue, Coral Springs, FL 33065 – Second Level



GROSS INTERNAL AREA  
FLOOR 1: 2702 sq. ft, FLOOR 2: 938 sq. ft  
EXCLUDED AREAS: GARAGE: 883 sq. ft, SCREENED PORCH: 1073 sq. ft, OPEN TO BELOW: 745 sq. ft.  
BALCONY: 173 sq. ft  
TOTAL: 3640 sq. ft  
MEASUREMENTS CALCULATED BY V1Photos.com ARE DEEMED HIGHLY RELIABLE BUT NOT GUARANTEED.



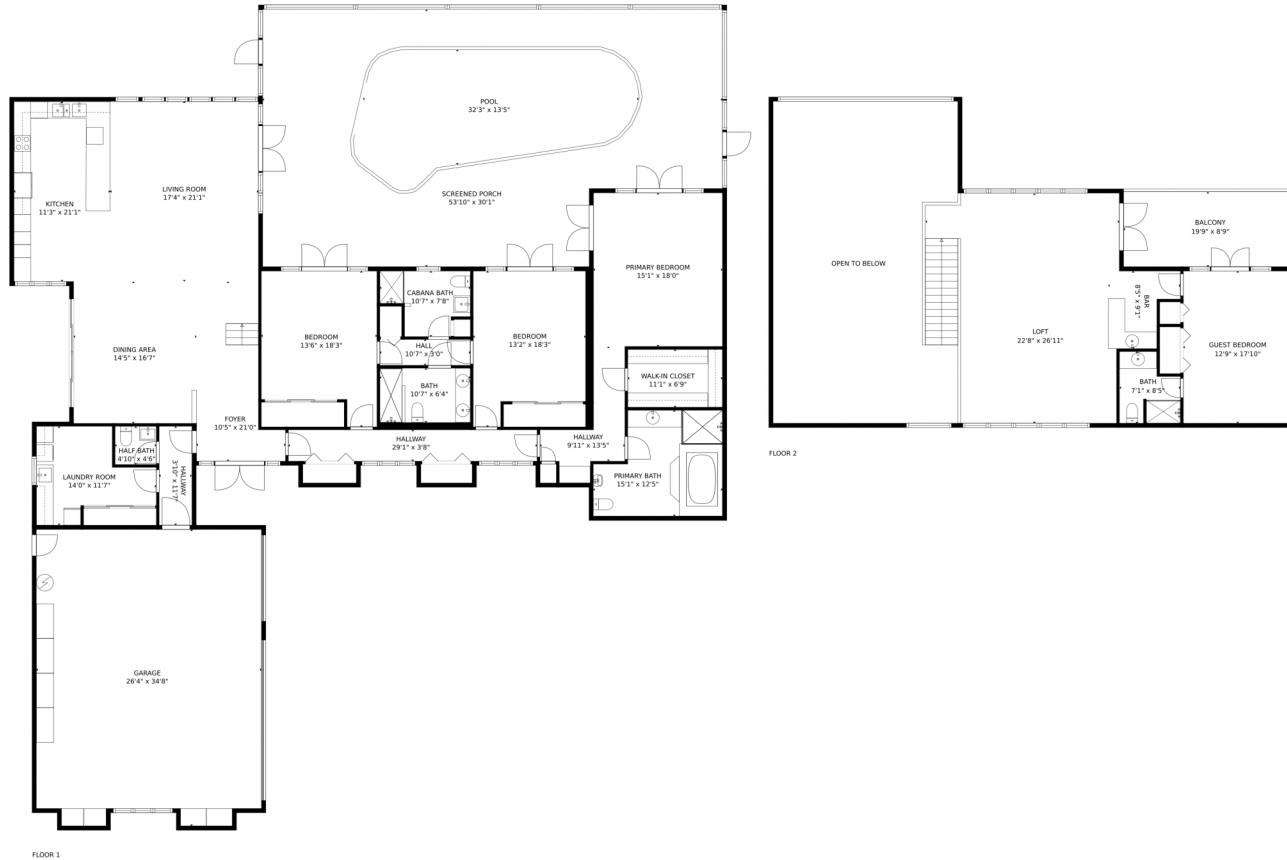
Disclaimer: Sizes and Dimensions are Approximate, Actual May Vary.



**Anthony Nastase**  
954-775-5165  
anthony@tropicalspringsrealty.com



# 3201 Northwest 112th Avenue, Coral Springs, FL 33065 – All Levels



GROSS INTERNAL AREA  
FLOOR 1: 2702 sq. ft, FLOOR 2: 938 sq. ft  
EXCLUDED AREAS: GARAGE: 883 sq. ft, SCREENED PORCH: 1073 sq. ft, OPEN TO BELOW: 745 sq. ft,  
BALCONY: 173 sq. ft  
TOTAL: 3640 sq. ft  
MEASUREMENTS CALCULATED BY V1Photos.COM ARE DEEMED HIGHLY RELIABLE BUT NOT GUARANTEED.



Disclaimer: Sizes and Dimensions are Approximate, Actual May Vary.



**Anthony Nastase**  
954-775-5165  
anthony@tropicalspringsrealty.com



Scan code  
for more  
property  
details

