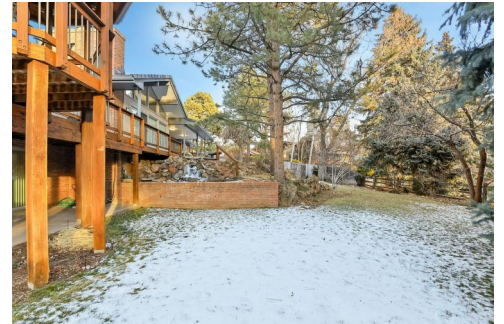




3829 South Willow Way
 Denver, CO 80237
 COMMUNITY: Hutchinson Hills

MLS # 5507778
 PRICE \$975,000



Single Family 3590 SQFT 5 Beds 3/1 Baths 2 Car 0.36 Acre

PROPERTY DETAILS

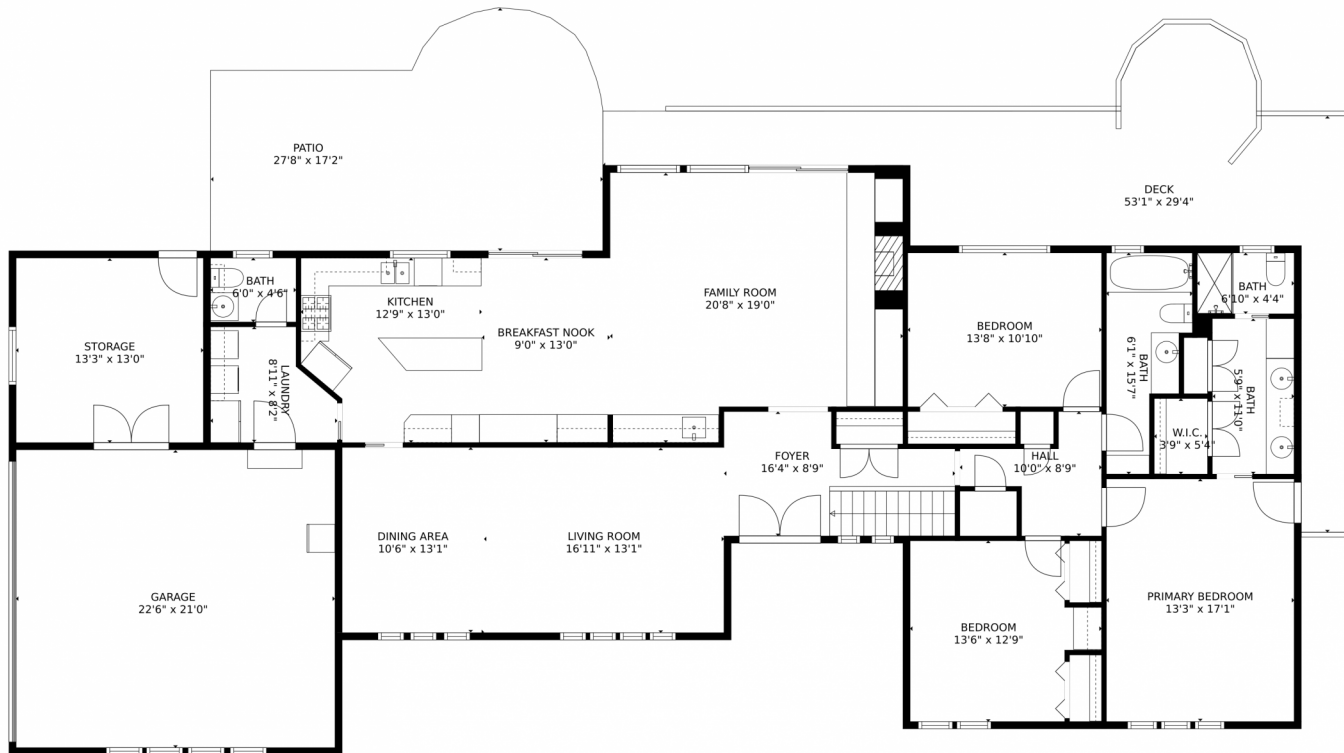
Stunning ranch home in Hutchinson Hills with spacious living space, formal living area, and impressive family room. Chef's dream kitchen with stainless steel appliances and granite countertops. 3 bedrooms, 2.5 baths on the main floor. Walk-out basement with office area and rec room. Covered porch and wooden deck with gazebo. Beautifully landscaped yard. Close to amenities and schools. A retreat in the city.



Paula Workman
 303-888-1033
 paula@paulaworkman.com



3829 South Willow Way, Denver, CO 80237 – Main Level



TOTAL: 2923 sq. ft

Below Ground: 805 sq. ft, FLOOR 2: 2118 sq. ft

EXCLUDED AREAS: STORAGE: 281 sq. ft, ELECTRICAL ROOM: 79 sq. ft, FIREPLACE: 9 sq. ft,

DECK: 508 sq. ft, PATIO: 394 sq. ft, GARAGE: 473 sq. ft

MEASUREMENTS CALCULATED BY V1PHOTOS.COM ARE DEEMED HIGHLY RELIABLE BUT NOT GUARANTEED.



Disclaimer: Sizes and Dimensions are Approximate, Actual May Vary.



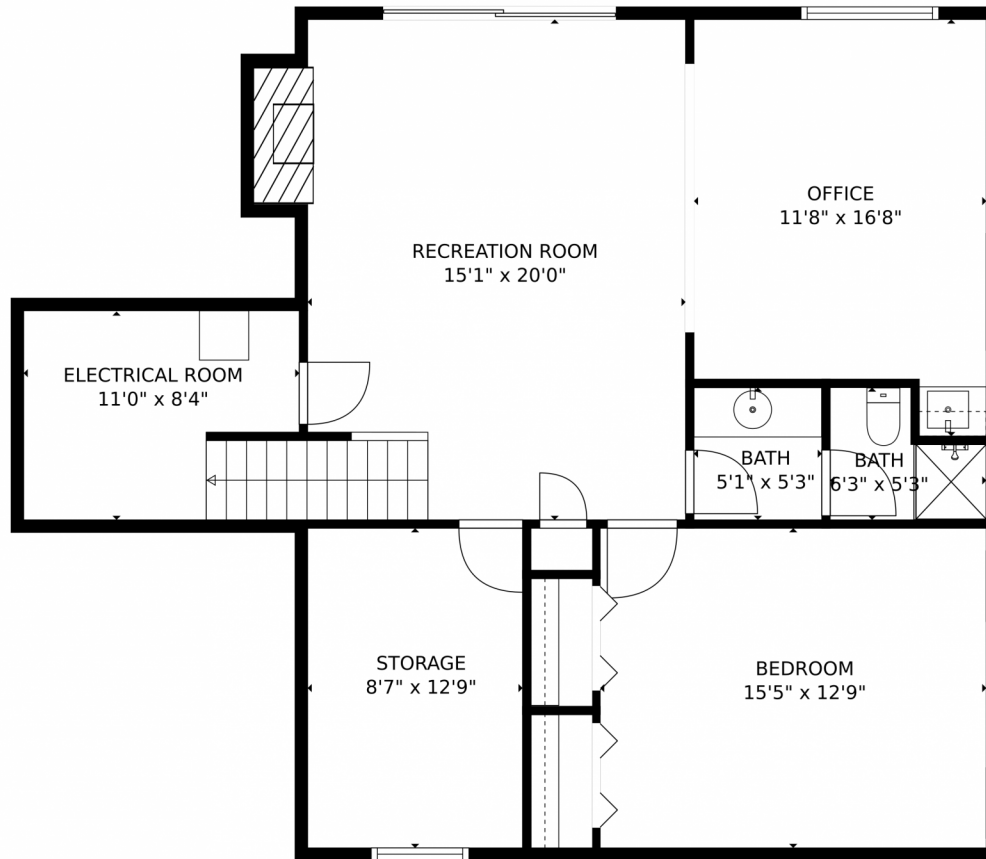
Paula Workman
303-888-1033
paula@paulaworkman.com



Scan code
for more
property
details



3829 South Willow Way, Denver, CO 80237 – Lower Level



TOTAL: 2923 sq. ft

Below Ground: 805 sq. ft, FLOOR 2: 2118 sq. ft

EXCLUDED AREAS: STORAGE: 281 sq. ft, ELECTRICAL ROOM: 79 sq. ft, FIREPLACE: 9 sq. ft,

DECK: 508 sq. ft, PATIO: 394 sq. ft, GARAGE: 473 sq. ft

MEASUREMENTS CALCULATED BY V1PHOTOS.COM ARE DEEMED HIGHLY RELIABLE BUT NOT GUARANTEED.



Disclaimer: Sizes and Dimensions are Approximate, Actual May Vary.



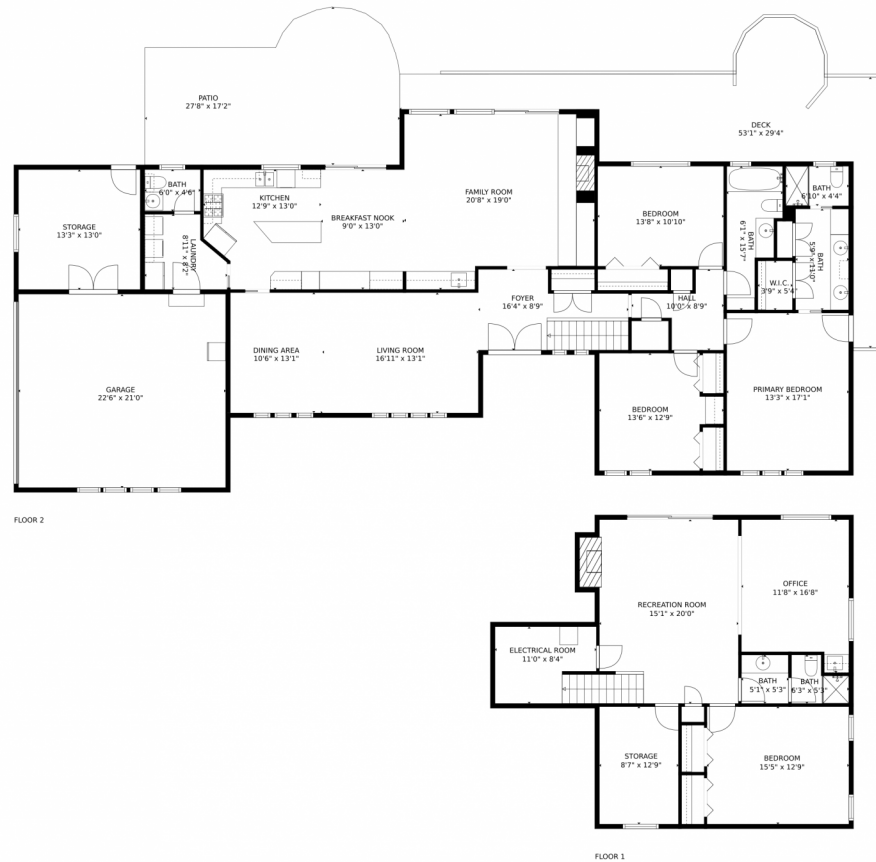
Paula Workman
303-888-1033
paula@paulaworkman.com



Scan code
for more
property
details



3829 South Willow Way, Denver, CO 80237 – All Levels



TOTAL: 2923 sq. ft

Below Ground: 805 sq. ft, FLOOR 2: 2118 sq. ft

EXCLUDED AREAS: STORAGE: 281 sq. ft, ELECTRICAL ROOM: 79 sq. ft, FIREPLACE: 9 sq. ft,
DECK: 508 sq. ft, PATIO: 394 sq. ft, GARAGE: 473 sq. ft

MEASUREMENTS CALCULATED BY V1PHOTOS.COM ARE DEEMED HIGHLY RELIABLE BUT NOT GUARANTEED.



Disclaimer: Sizes and Dimensions are Approximate, Actual May Vary.



Paula Workman
303-888-1033
paula@paulaworkman.com



Scan code
for more
property
details

