



6939 S Delaware Street
 Littleton, CO 80120
 COMMUNITY: Maple Ridge

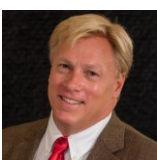
MLS # 6369737
 PRICE \$775,000



Single Family
 3006 SQFT
 4 Beds
 3 Baths
 2 Car
 0.23 Acre

PROPERTY DETAILS

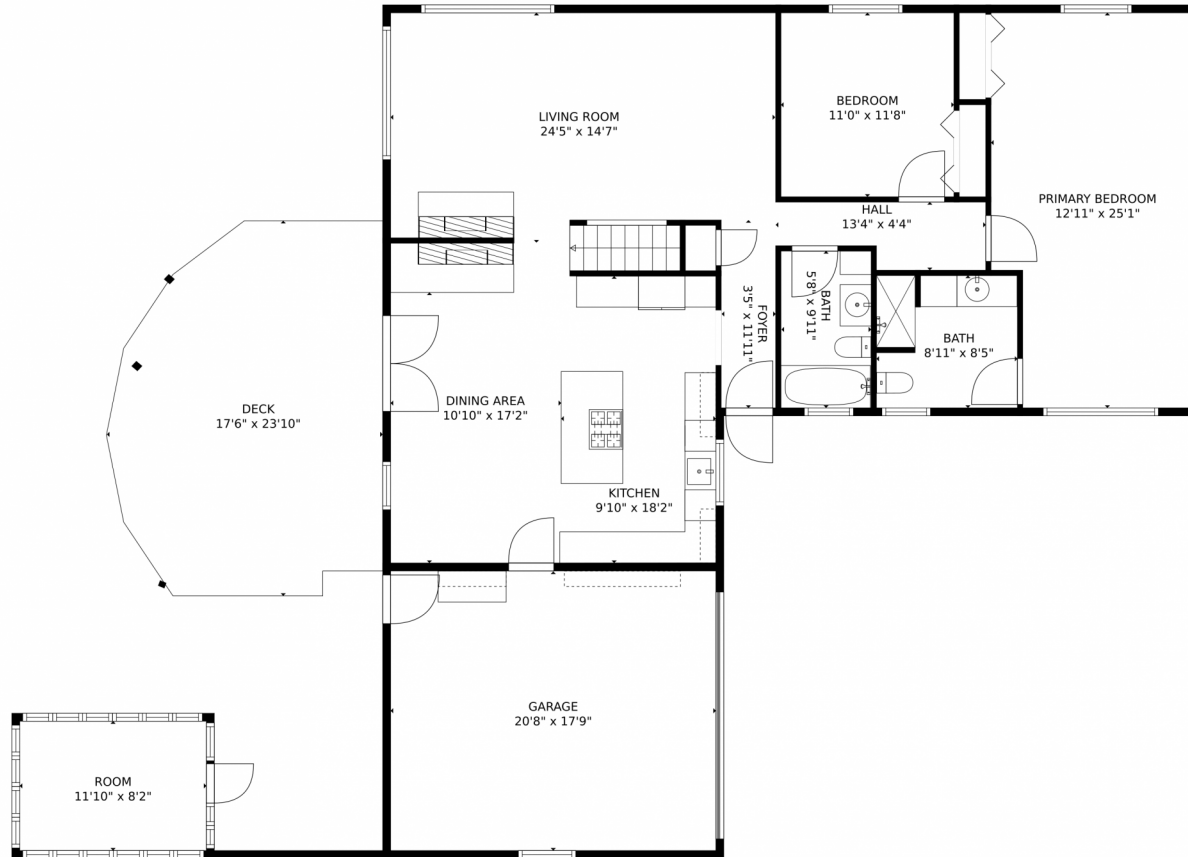
This fully remodeled 4 BDRM/3 BTH home is a neighborhood stunner. The kitchen features a new accent island, cabinetry, and hardwood floors. The first floor includes a large Primary Bedroom with 3/4 Bath and additional full Bathroom. The basement offers 2 bedrooms, a massive family room, and a laundry room. The private backyard has a shed and greenhouse. Centrally located with a favorable walk score and close to downtown Littleton and the light rail. No HOA fees! Plenty of RV parking. Don't miss your chance to make this your next home sweet home!



Jay Brown
 303-681-6118
 jay@jaydbrown.com



6939 S Delaware Street, Littleton, CO 80120 – Main Level



TOTAL: 2549 sq. ft
Below Ground: 971 sq. ft, FLOOR 2: 0 sq. ft, FLOOR 3: 1578 sq. ft
EXCLUDED AREAS: UTILITY: 307 sq. ft, SHED: 110 sq. ft, DECK: 358 sq. ft,
GARAGE: 366 sq. ft

MEASUREMENTS CALCULATED BY V1Photos.com ARE DEEMED HIGHLY RELIABLE BUT NOT GUARANTEED.



Disclaimer: Sizes and Dimensions are Approximate, Actual May Vary.



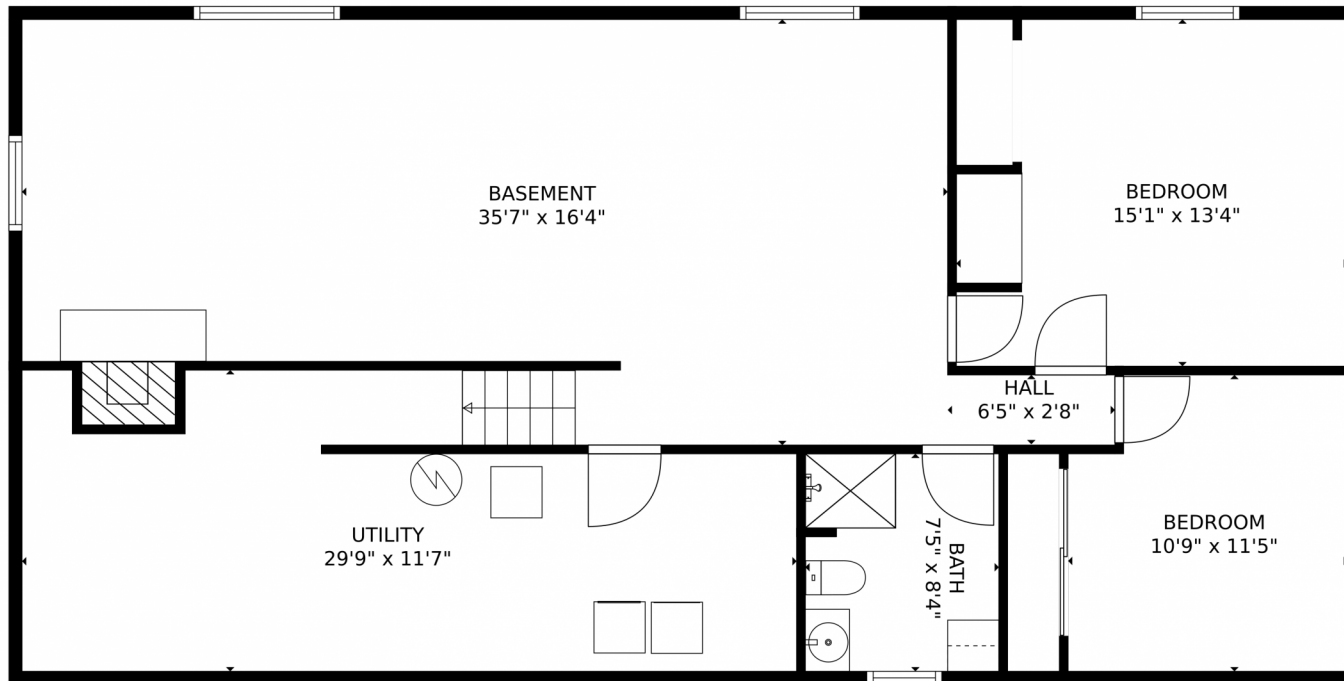
Jay Brown
303-681-6118
jay@jaydbrown.com



Scan code
for more
property
details



6939 S Delaware Street, Littleton, CO 80120 – Lower Level



TOTAL: 2549 sq. ft
Below Ground: 971 sq. ft, FLOOR 2: 0 sq. ft, FLOOR 3: 1578 sq. ft
EXCLUDED AREAS: UTILITY: 307 sq. ft, SHED: 110 sq. ft, DECK: 358 sq. ft,
GARAGE: 366 sq. ft
MEASUREMENTS CALCULATED BY V1Photos.com ARE DEEMED HIGHLY RELIABLE BUT NOT GUARANTEED.



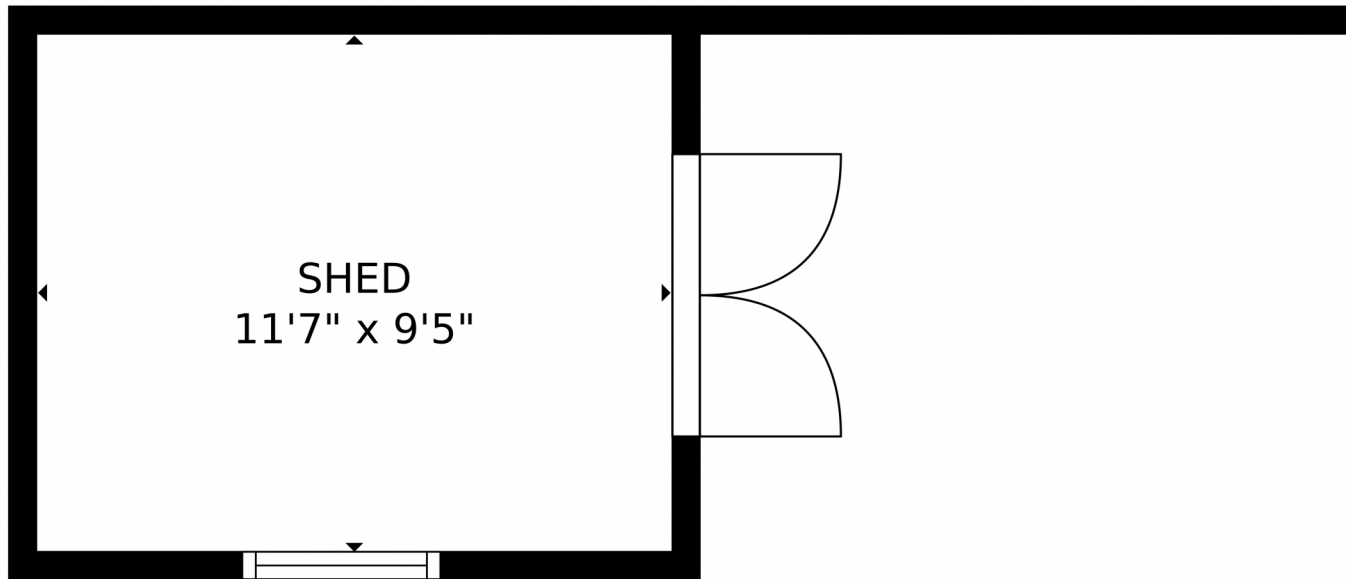
Disclaimer: Sizes and Dimensions are Approximate, Actual May Vary.



Jay Brown
303-681-6118
jay@jaydbrown.com



Scan code
for more
property
details



TOTAL: 2549 sq. ft
Below Ground: 971 sq. ft, FLOOR 2: 0 sq. ft, FLOOR 3: 1578 sq. ft
EXCLUDED AREAS: UTILITY: 307 sq. ft, SHED: 110 sq. ft, DECK: 358 sq. ft,
GARAGE: 366 sq. ft
MEASUREMENTS CALCULATED BY V1Photos.COM ARE DEEMED HIGHLY RELIABLE BUT NOT GUARANTEED.



Disclaimer: Sizes and Dimensions are Approximate, Actual May Vary.



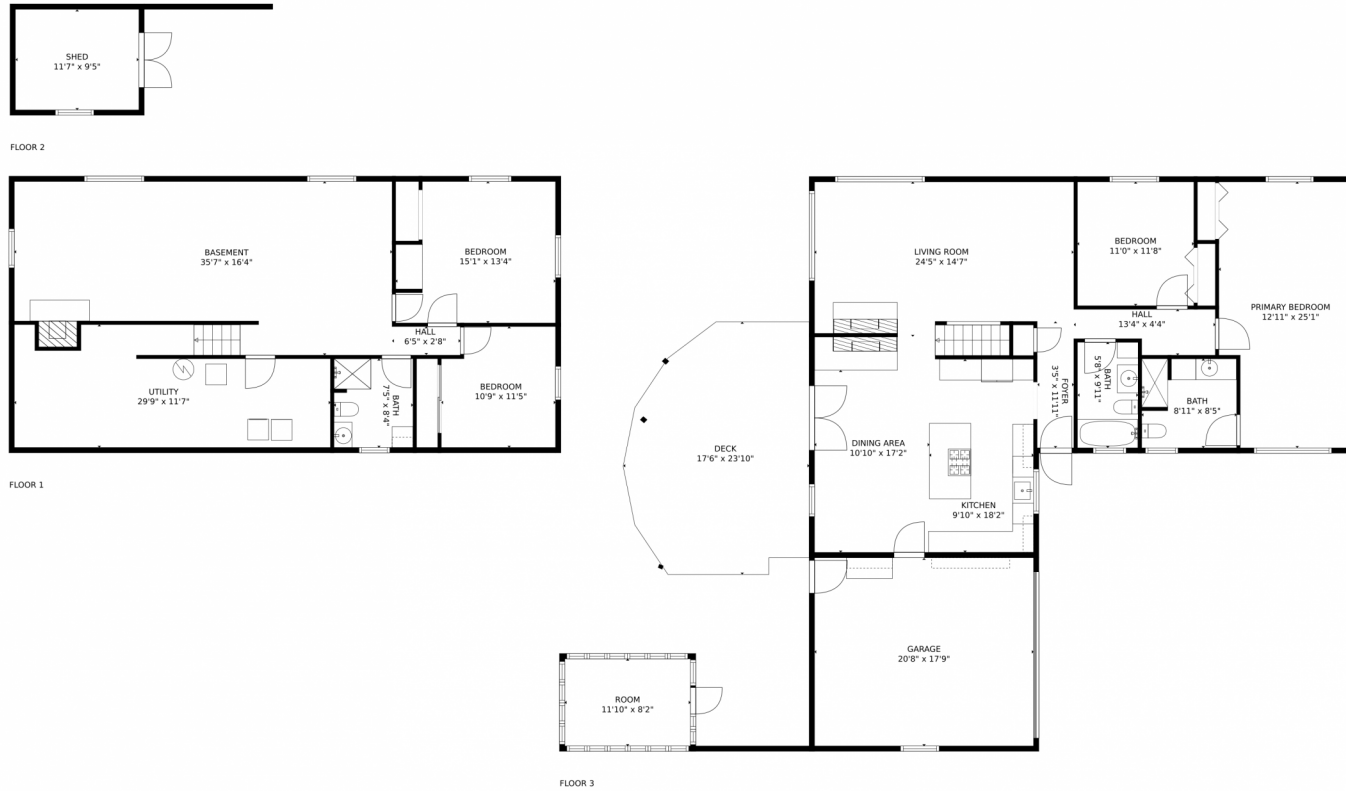
Jay Brown
303-681-6118
jay@jaydbrown.com



Scan code
for more
property
details



6939 S Delaware Street, Littleton, CO 80120 – All Levels



TOTAL: 2549 sq. ft

Below Ground: 971 sq. ft, FLOOR 2: 0 sq. ft, FLOOR 3: 1578 sq. ft
EXCLUDED AREAS: UTILITY: 307 sq. ft, SHED: 110 sq. ft, DECK: 358 sq. ft,
GARAGE: 366 sq. ft

MEASUREMENTS CALCULATED BY V1Photos.COM ARE DEEMED HIGHLY RELIABLE BUT NOT GUARANTEED.



Disclaimer: Sizes and Dimensions are Approximate, Actual May Vary.



Jay Brown
303-681-6118
jay@jaydbrown.com



Scan code
for more
property
details

