



1555 California Street #412
Denver, CO 80202
COMMUNITY: Denver Dry Condominiums



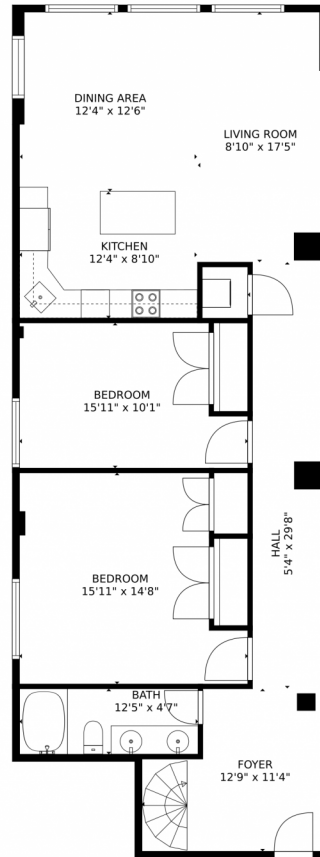
 Condominium  1766 SQFT  3 Beds  2 Baths  1 Car



Kristina Davis
303-870-8142
kristina@dreamsbydavis.com



1555 California Street #412, Denver, CO 80202 – Main Level



TOTAL: 1643 sq. ft

Below Ground: 1181 sq. ft, FLOOR 2: 462 sq. ft
EXCLUDED AREAS: OPEN TO BELOW: 891 sq. ft

MEASUREMENTS CALCULATED BY V1PHOTOS.COM ARE DEEMED HIGHLY RELIABLE BUT NOT GUARANTEED.



Disclaimer: Sizes and Dimensions are Approximate, Actual May Vary.



Kristina Davis
303-870-8142
kristina@dreamsbydavis.com



1555 California Street #412, Denver, CO 80202 – Upper Level



TOTAL: 1643 sq. ft
Below Ground: 1181 sq. ft, FLOOR 2: 462 sq. ft
EXCLUDED AREAS: OPEN TO BELOW: 891 sq. ft
MEASUREMENTS CALCULATED BY V1Photos.COM ARE DEEMED HIGHLY RELIABLE BUT NOT GUARANTEED.



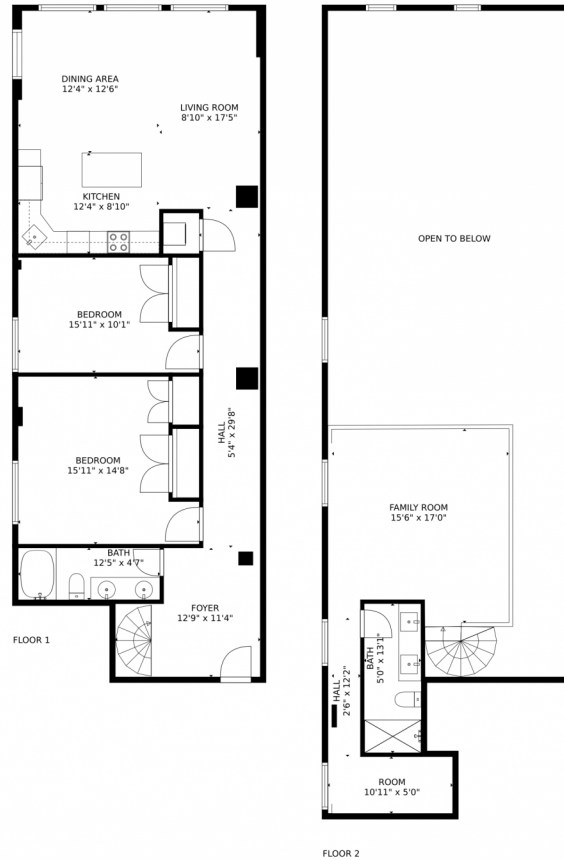
Disclaimer: Sizes and Dimensions are Approximate, Actual May Vary.



Kristina Davis
303-870-8142
kristina@dreamsbydavis.com



1555 California Street #412, Denver, CO 80202 – All Levels



TOTAL: 1643 sq. ft

Below Ground: 1181 sq. ft, FLOOR 2: 462 sq. ft

EXCLUDED AREAS: OPEN TO BELOW: 891 sq. ft

MEASUREMENTS CALCULATED BY V1Photos.com ARE DEEMED HIGHLY RELIABLE BUT NOT GUARANTEED.



Disclaimer: Sizes and Dimensions are Approximate, Actual May Vary.



Kristina Davis
303-870-8142
kristina@dreamsbydavis.com



Scan code
for more
property
details

