




 Single Family

 2100 SQFT

 3 Beds

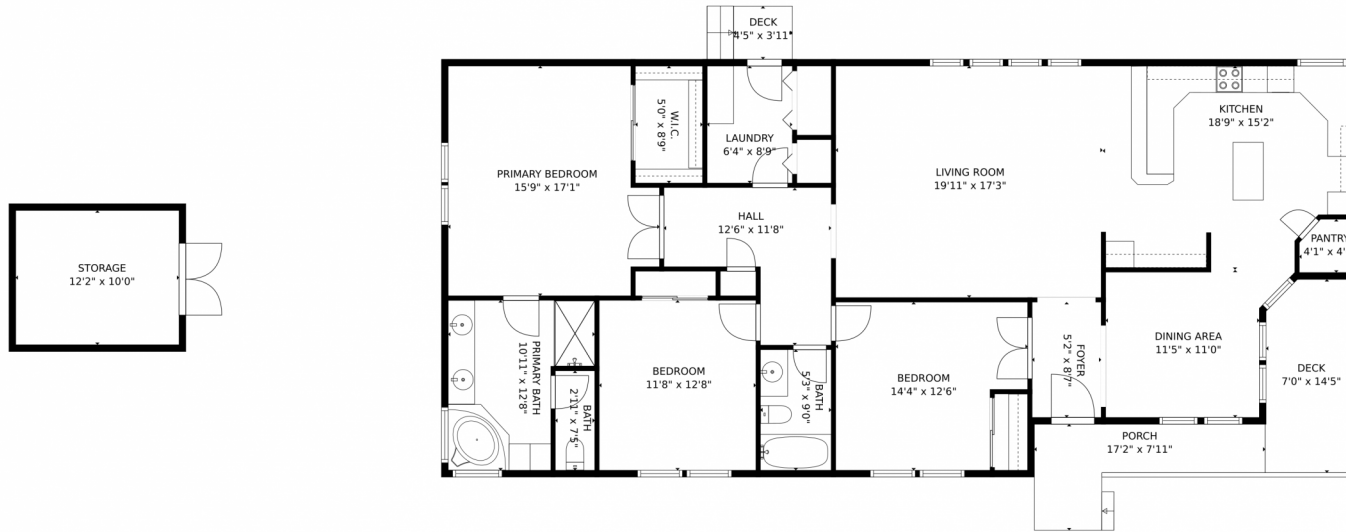
 2 Baths



Jordan Kermes
952-956-2958
jkermes@wedgewoodhomesrealty.com
<https://colorado.wedgewoodhomesrealty.com>



3016 Withers Avenue, Pueblo, CO 81008 – Main Level



TOTAL: 1864 sq. ft
FLOOR 1: 1864 sq. ft
EXCLUDED AREAS: DECK: 114 sq. ft, PORCH: 84 sq. ft, STORAGE: 122 sq. ft
MEASUREMENTS CALCULATED BY V1Photos.COM ARE DEEMED HIGHLY RELIABLE BUT NOT GUARANTEED.



Disclaimer: Sizes and Dimensions are Approximate, Actual May Vary.



Jordan Kermes
952-956-2958
jkermes@wedgewoodhomesrealty.com
<https://colorado.wedgewoodhomesrealty.com>



Scan code
for more
property
details

