



10390 Torreys Peak Drive
 Parker, CO 80138
 COMMUNITY: Willow Ridge



Single Family



1797 SQFT



3 Beds



2 Baths



3 Car



0.19 Acre



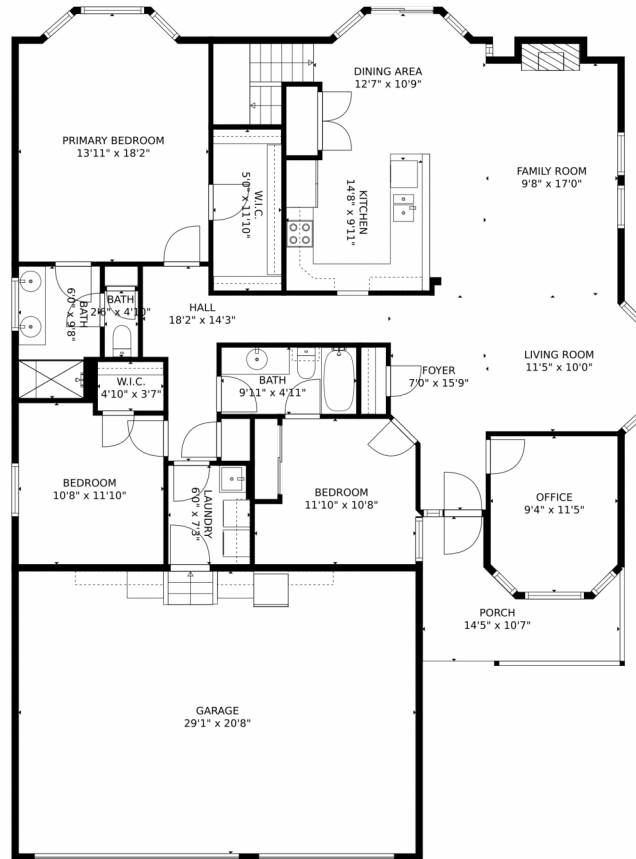
Kim Hildebrand
 720-937-7108
 milehighhomes@comcast.net



Scan code
 for more
 property
 details



10390 Torreys Peak Drive, Parker, CO 80138 — 1st Floor



TOTAL: 1751 sq. ft
Below Ground: 48 sq. ft, FLOOR 2: 1703 sq. ft
EXCLUDED AREAS: STORAGE: 22 sq. ft, UNFINISHED BASEMENT: 1569 sq. ft, GARAGE: 602 sq. ft,
PORCH: 98 sq. ft, FIREPLACE: 4 sq. ft

MEASUREMENTS CALCULATED BY V1Photos.com ARE DEEMED HIGHLY RELIABLE BUT NOT GUARANTEED.

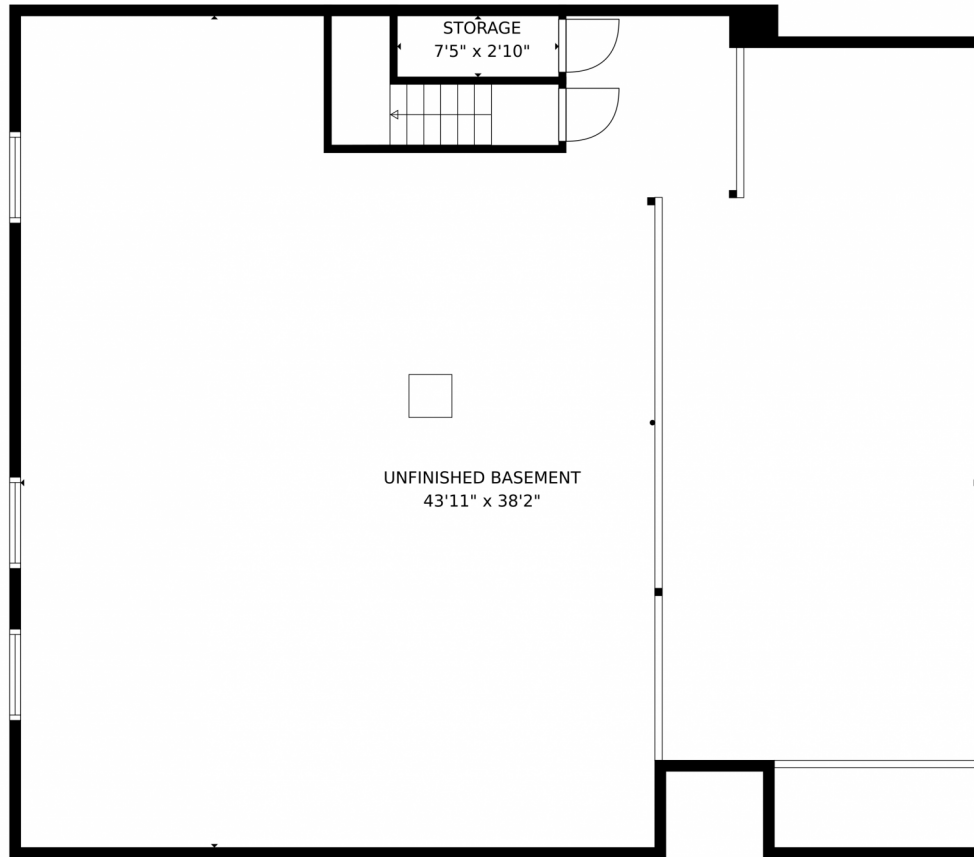
Disclaimer: Sizes and Dimensions are Approximate, Actual May Vary.



Kim Hildebrand
720-937-7108
milehighhomes@comcast.net



10390 Torreys Peak Drive, Parker, CO 80138 – Basement



TOTAL: 1751 sq. ft
Below Ground: 48 sq. ft, FLOOR 2: 1703 sq. ft
EXCLUDED AREAS: STORAGE: 22 sq. ft, UNFINISHED BASEMENT: 1569 sq. ft, GARAGE: 602 sq. ft,
PORCH: 98 sq. ft, FIREPLACE: 4 sq. ft

MEASUREMENTS CALCULATED BY V1Photos.com ARE DEEMED HIGHLY RELIABLE BUT NOT GUARANTEED.



Disclaimer: Sizes and Dimensions are Approximate, Actual May Vary.



Kim Hildebrand
720-937-7108
milehighhomes@comcast.net



10390 Torreys Peak Drive, Parker, CO 80138 – All Floors



TOTAL: 1751 sq. ft
Below Ground: 48 sq. ft, FLOOR 2: 1703 sq. ft
EXCLUDED AREAS: STORAGE: 22 sq. ft, UNFINISHED BASEMENT: 1569 sq. ft, GARAGE: 602 sq. ft,
PORCH: 98 sq. ft, FIREPLACE: 4 sq. ft

MEASUREMENTS CALCULATED BY V1Photos.com ARE DEEMED HIGHLY RELIABLE BUT NOT GUARANTEED.



Disclaimer: Sizes and Dimensions are Approximate, Actual May Vary.



Kim Hildebrand
720-937-7108
milehighhomes@comcast.net

