



5739 W Milan Place
 Denver, CO 80235
 COMMUNITY: Pinecrest Village

MLS # 7799775
 PRICE \$715,000



Single Family 3354 SQFT 5 Beds 3/1 Baths 2 Car 0.3 Acre

PROPERTY DETAILS

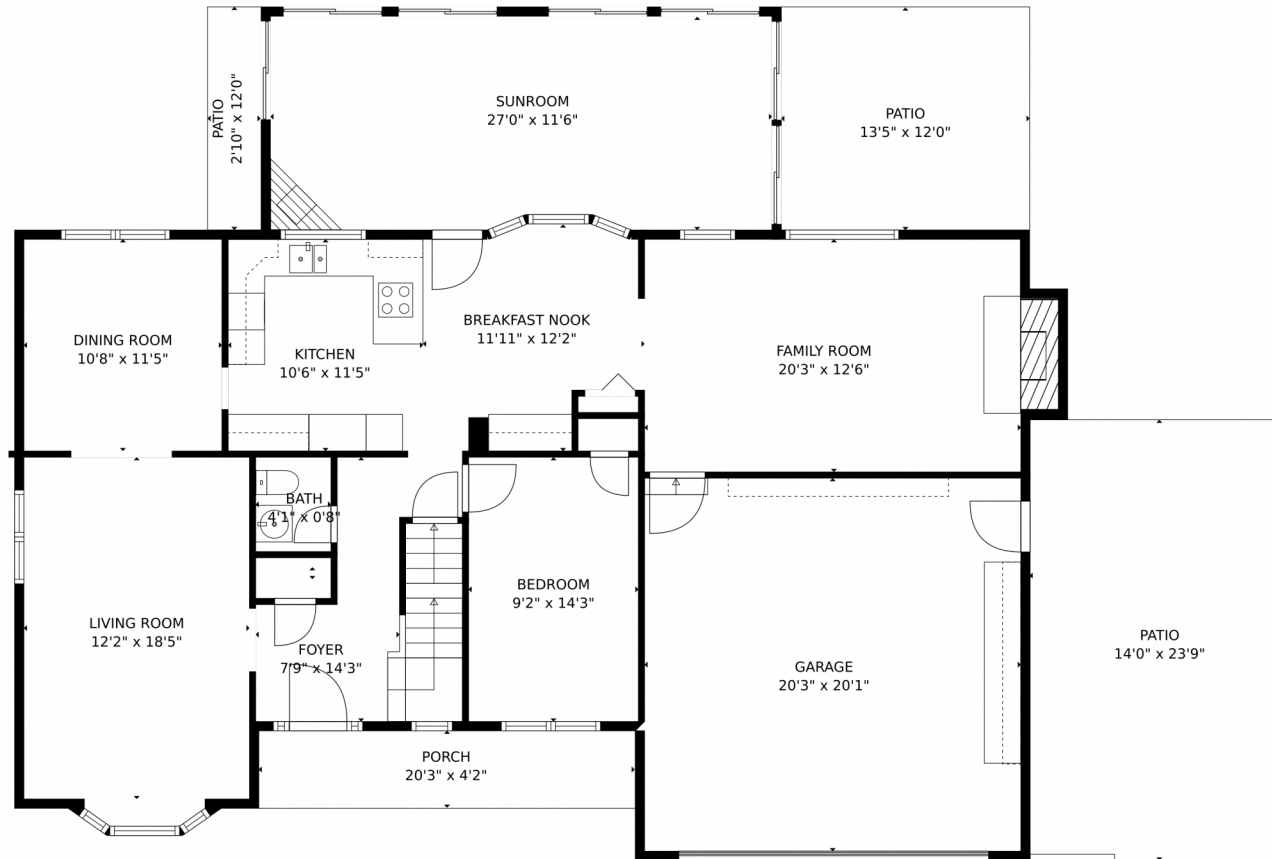
Lovely home with fresh finishes and a stunning sunroom on a large fenced yard in a quiet neighborhood near a city park. Multiple gathering and entertainment spaces including a front living room, formal dining room, family room, and sunroom. Finished basement offers additional living space. Four bedrooms upstairs with shared bath, main floor bedroom/office with half bath, and non-conforming bedroom with full bath in basement. Convenient location near amenities. Appliances included. Move-in ready and priced to sell quickly. Buyer to verify important details.



Wesley Peters
 720-681-9317
 wesndp@gmail.com



5739 W Milan Place, Denver, CO 80235 – Main Level



TOTAL: 3195 sq. ft
Below Ground: 823 sq. ft, FLOOR 2: 1493 sq. ft, FLOOR 3: 879 sq. ft
EXCLUDED AREAS: PATIO: 527 sq. ft, PORCH: 85 sq. ft, GARAGE: 408 sq. ft,
EMBEDDED WINDOW: 9 sq. ft, BALCONY: 60 sq. ft
MEASUREMENTS CALCULATED BY V1Photos.com ARE DEEMED HIGHLY RELIABLE BUT NOT GUARANTEED.



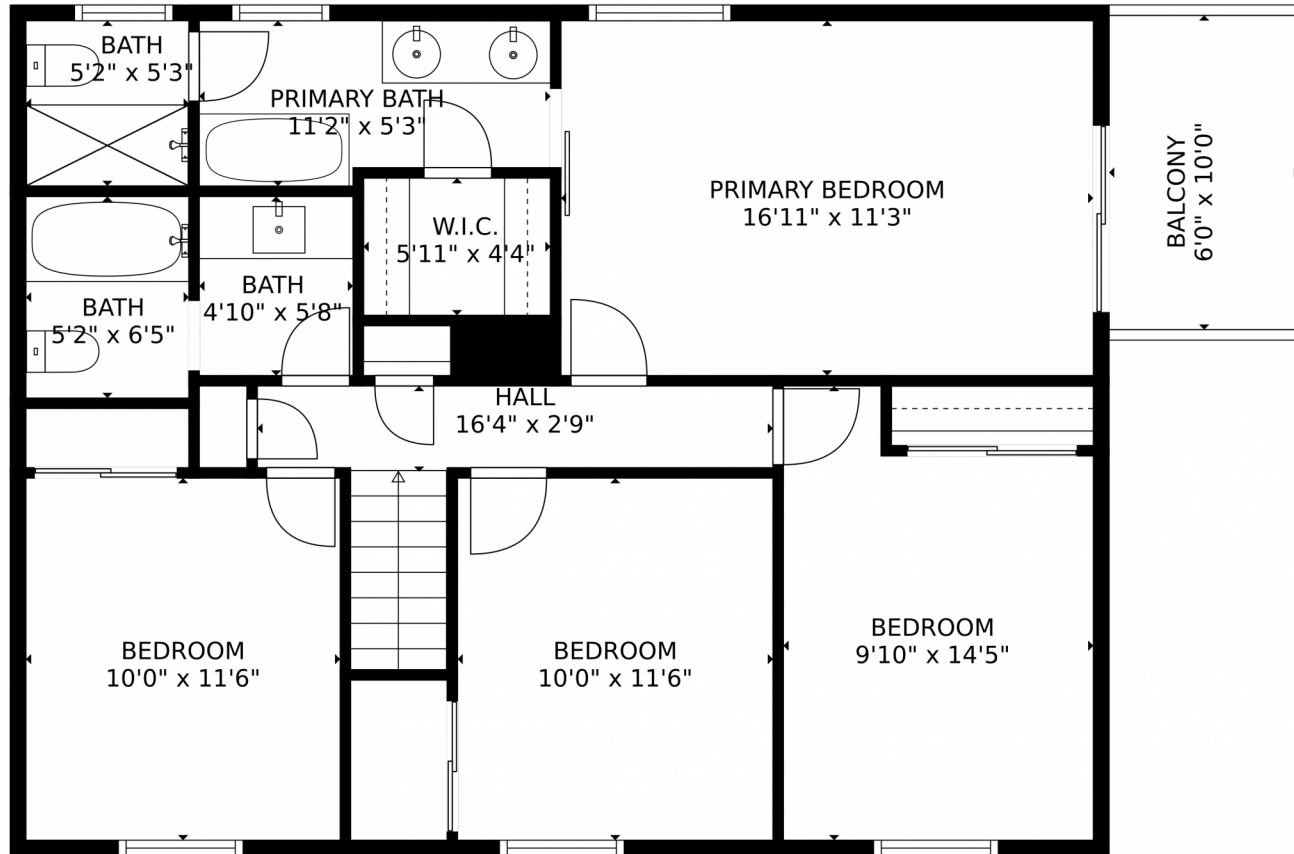
Disclaimer: Sizes and Dimensions are Approximate, Actual May Vary.



Wesley Peters
720-681-9317
wesndp@gmail.com



5739 W Milan Place, Denver, CO 80235 – Upper Level



TOTAL: 2888 sq. ft
Below Ground: 823 sq. ft, FLOOR 2: 1186 sq. ft, FLOOR 3: 879 sq. ft
EXCLUDED AREAS: PATIO: 527 sq. ft, PORCH: 85 sq. ft, SCREENED PORCH: 307 sq. ft,
GARAGE: 408 sq. ft, EMBEDDED WINDOW: 9 sq. ft, BALCONY: 60 sq. ft
MEASUREMENTS CALCULATED BY V1Photos.com ARE DEEMED HIGHLY RELIABLE BUT NOT GUARANTEED.



Disclaimer: Sizes and Dimensions are Approximate, Actual May Vary.



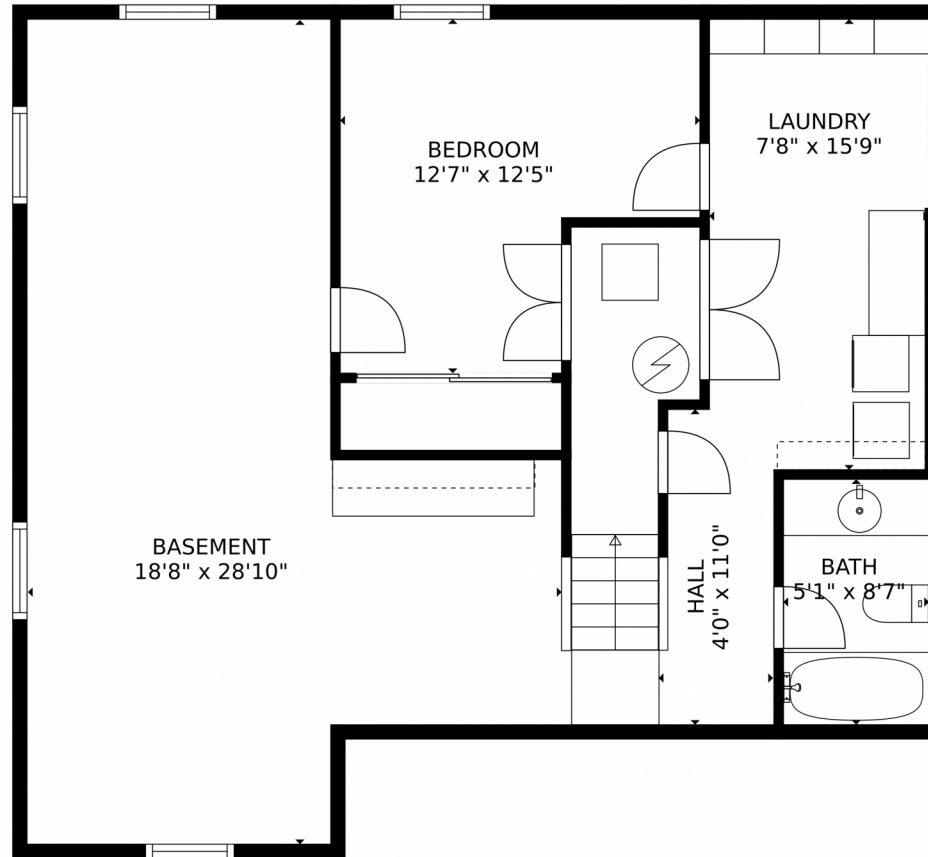
Wesley Peters
720-681-9317
wesndp@gmail.com



Scan code
for more
property
details



5739 W Milan Place, Denver, CO 80235 – Lower Level



TOTAL: 2888 sq. ft
Below Ground: 823 sq. ft, FLOOR 2: 1186 sq. ft, FLOOR 3: 879 sq. ft
EXCLUDED AREAS: PATIO: 527 sq. ft, PORCH: 85 sq. ft, SCREENED PORCH: 307 sq. ft,
GARAGE: 408 sq. ft, EMBEDDED WINDOW: 9 sq. ft, BALCONY: 60 sq. ft
MEASUREMENTS CALCULATED BY V1Photos.com ARE DEEMED HIGHLY RELIABLE BUT NOT GUARANTEED.



Disclaimer: Sizes and Dimensions are Approximate, Actual May Vary.



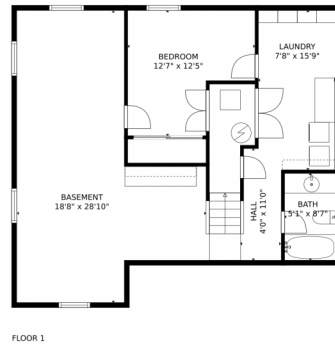
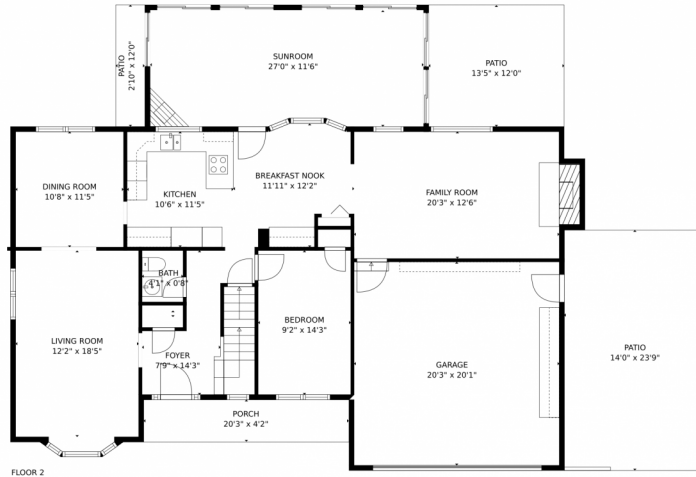
Wesley Peters
720-681-9317
wesndp@gmail.com



Scan code
for more
property
details



5739 W Milan Place, Denver, CO 80235 – All Levels



TOTAL: 3195 sq. ft

Below Ground: 823 sq. ft, FLOOR 2: 1493 sq. ft, FLOOR 3: 879 sq. ft
EXCLUDED AREAS: PATIO: 527 sq. ft, PORCH: 85 sq. ft, GARAGE: 408 sq. ft,
EMBEDDED WINDOW: 9 sq. ft, BALCONY: 60 sq. ft

MEASUREMENTS CALCULATED BY V1Photos.com ARE DEEMED HIGHLY RELIABLE BUT NOT GUARANTEED.



Disclaimer: Sizes and Dimensions are Approximate, Actual May Vary.



Wesley Peters
720-681-9317
wesndp@gmail.com

