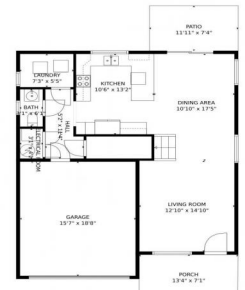






5534 Malaya Street, Denver, CO 80249 - Main Level



 Single Family

 1743 SQFT

 4 Beds

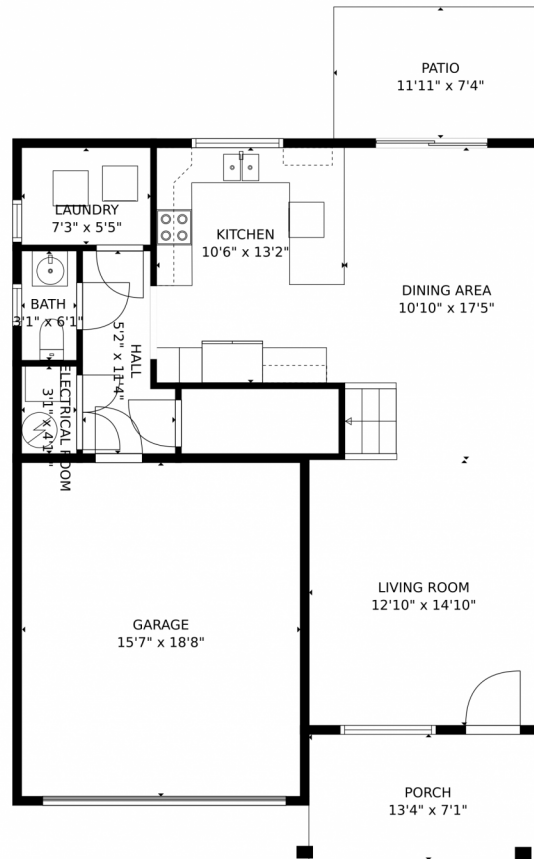
 2/1 Baths



Taylor Haas
 303-665-7368
 taylorh@coloradorp.com
<https://www.coloradorp.com/available-rental-properties-denver>



5534 Malaya Street, Denver, CO 80249 – Main Level



TOTAL: 1609 sq. ft
FLOOR 1: 675 sq. ft, FLOOR 2: 934 sq. ft
EXCLUDED AREAS: GARAGE: 291 sq. ft, ELECTRICAL ROOM: 15 sq. ft, PATIO: 88 sq. ft,
PORCH: 94 sq. ft

MEASUREMENTS CALCULATED BY V1Photos.com ARE DEEMED HIGHLY RELIABLE BUT NOT GUARANTEED.



Disclaimer: Sizes and Dimensions are Approximate, Actual May Vary.



Taylor Haas

303-665-7368

taylorh@coloradorpm.com

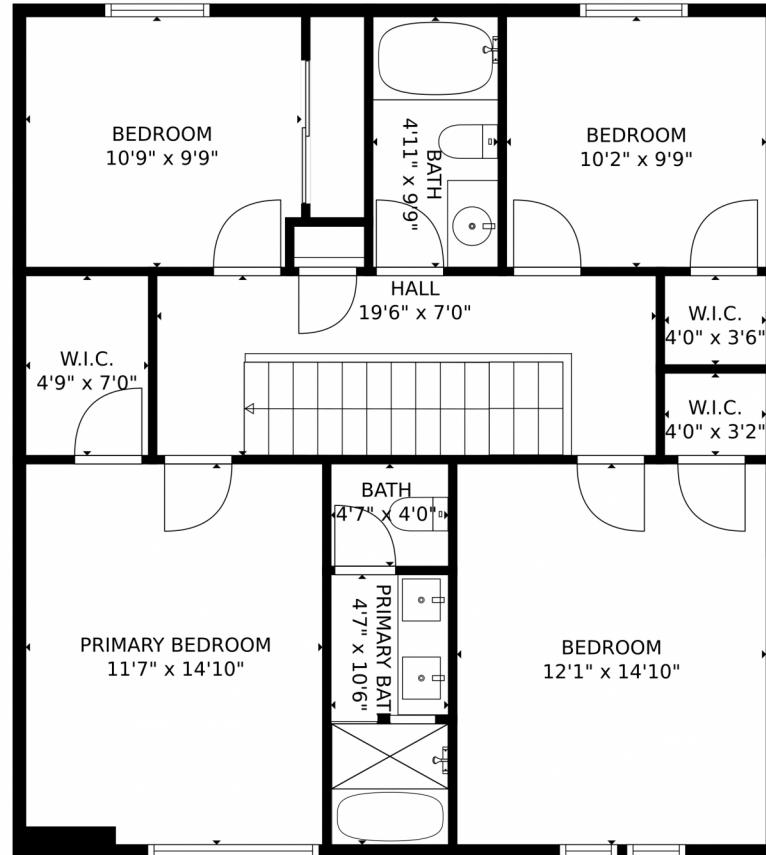
<https://www.coloradorpm.com/available-rental-properties-denver>



Scan code
for more
property
details



5534 Malaya Street, Denver, CO 80249 – Upper Level



TOTAL: 1609 sq. ft
FLOOR 1: 675 sq. ft, FLOOR 2: 934 sq. ft
EXCLUDED AREAS: GARAGE: 291 sq. ft, ELECTRICAL ROOM: 15 sq. ft, PATIO: 88 sq. ft,
PORCH: 94 sq. ft

MEASUREMENTS CALCULATED BY V1Photos.com ARE DEEMED HIGHLY RELIABLE BUT NOT GUARANTEED.



Disclaimer: Sizes and Dimensions are Approximate, Actual May Vary.



Taylor Haas

303-665-7368

taylorh@coloradorpm.com

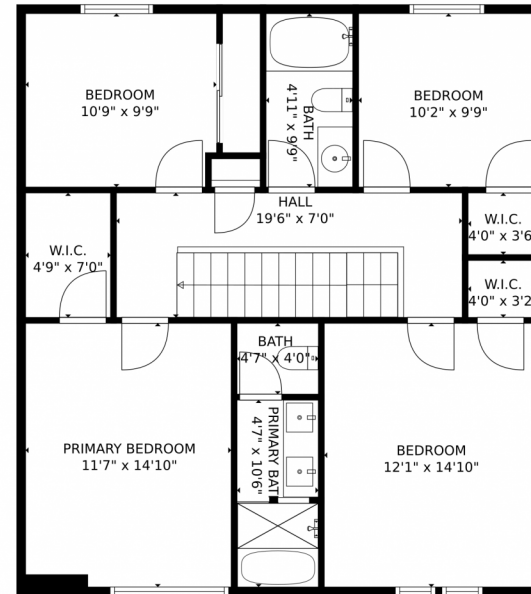
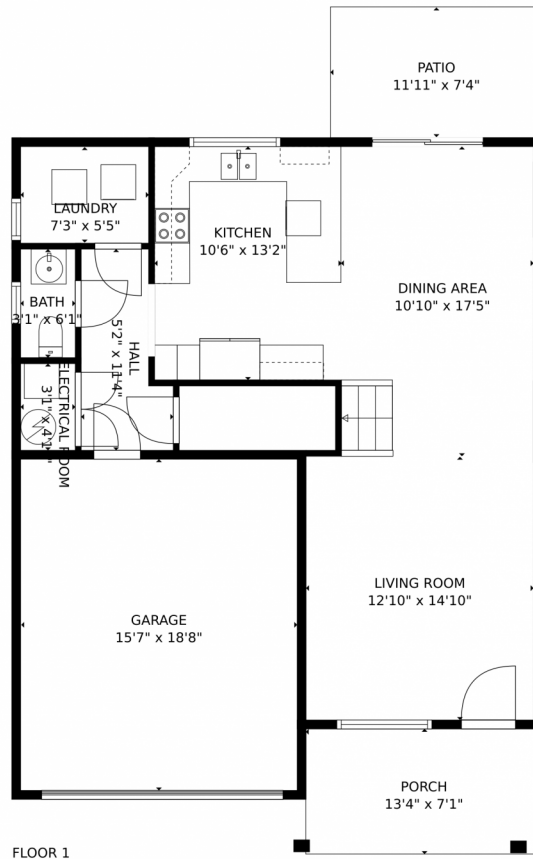
<https://www.coloradorpm.com/available-rental-properties-denver>



Scan code
for more
property
details



5534 Malaya Street, Denver, CO 80249 – All Levels



TOTAL: 1609 sq. ft
FLOOR 1: 675 sq. ft, FLOOR 2: 934 sq. ft
EXCLUDED AREAS: GARAGE: 291 sq. ft, ELECTRICAL ROOM: 15 sq. ft, PATIO: 88 sq. ft,
PORCH: 94 sq. ft

MEASUREMENTS CALCULATED BY V1Photos.COM ARE DEEMED HIGHLY RELIABLE BUT NOT GUARANTEED.



Disclaimer: Sizes and Dimensions are Approximate, Actual May Vary.



Taylor Haas
303-665-7368
taylorh@coloradorpm.com
<https://www.coloradorpm.com/available-rental-properties-denver>

