



11428 Southwest Lyra Drive
 Port St. Lucie, FL 34987
 COMMUNITY: Manderlie

MLS # R10957988



Single Family



2100 SQFT



3 Beds



2/1 Baths



2 Car



0.21 Acre

PROPERTY DETAILS

Citron Model home offers 3 Bedrooms, Den, and 2.5 baths. Situated around a lake with sunrises. Enjoy a community pool, hot tub, and tennis courts. Gourmet Kitchen with a center island. Primary bedroom with ensuite and frameless shower. Fully fenced backyard. Two-car garage with built-in cabinets. Includes a whole house generator.

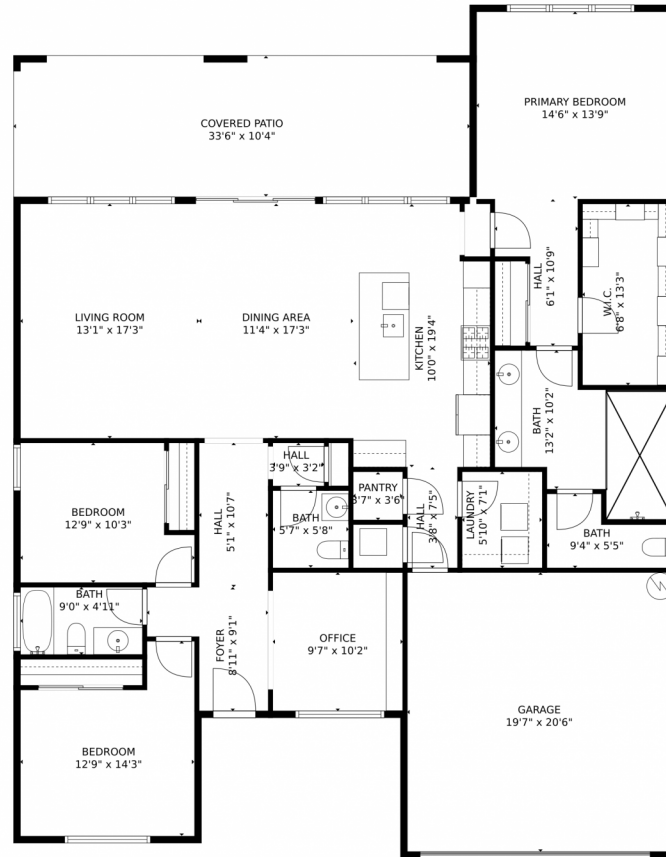


Jonathan Triandafilou
 301-938-9096
 jt@ebstonerealty.com



Scan code
 for more
 property
 details





TOTAL: 1899 sq. ft
FLOOR 1: 1899 sq. ft
EXCLUDED AREAS: COVERED PATIO: 344 sq. ft., GARAGE: 401 sq. ft
MEASUREMENTS CALCULATED BY V1Photos.com ARE DEEMED HIGHLY RELIABLE BUT NOT GUARANTEED.



Disclaimer: Sizes and Dimensions are Approximate, Actual May Vary.



Jonathan Triandafilou
301-938-9096
jt@ebstonrealty.com

