




 Single Family

 4200 SQFT

 4 Beds

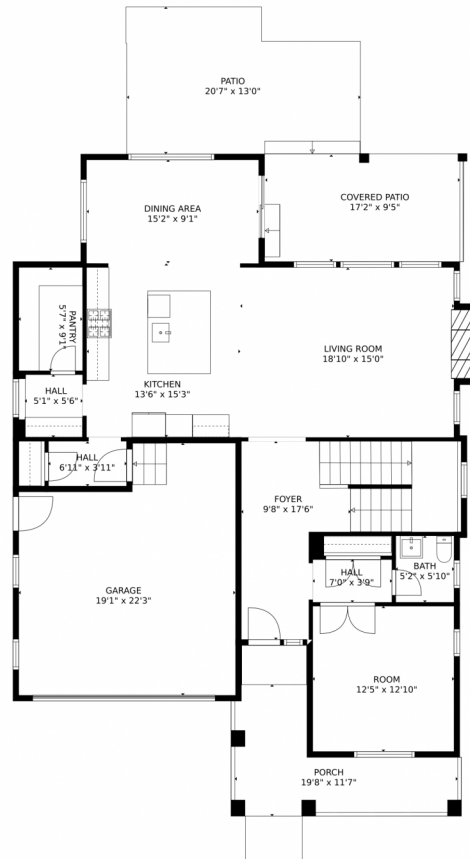
 3/1 Baths



Taylor Haas
303-665-7368
taylorh@coloradorpm.com
<https://www.coloradorpm.com/available-rental-properties-denver>



480 Pikes View Drive, Erie, CO 80516 – Main Level



TOTAL: 3811 sq. ft
Below Ground: 1053 sq. ft, FLOOR 2: 1225 sq. ft, FLOOR 3: 1533 sq. ft
EXCLUDED AREAS: ELECTRICAL ROOM: 83 sq. ft, PORCH: 167 sq. ft, PATIO: 241 sq. ft,
COVERED PATIO: 166 sq. ft, GARAGE: 382 sq. ft, FIREPLACE: 12 sq. ft

MEASUREMENTS CALCULATED BY V1Photos.com ARE DEEMED HIGHLY RELIABLE BUT NOT GUARANTEED.



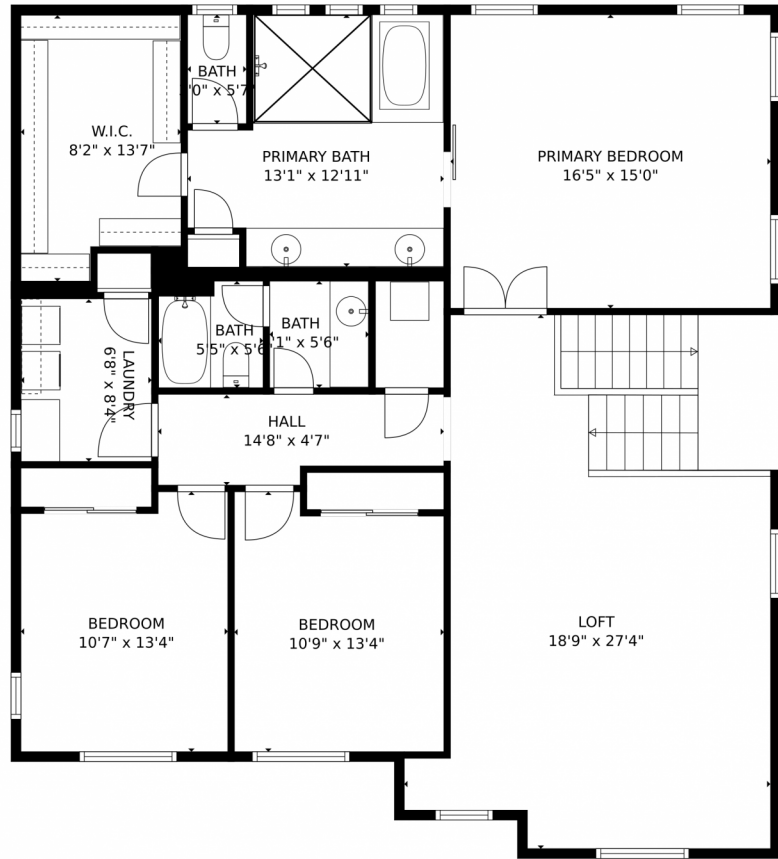
Disclaimer: Sizes and Dimensions are Approximate, Actual May Vary.



Taylor Haas
303-665-7368
taylorh@coloradorpm.com
<https://www.coloradorpm.com/available-rental-properties-denver>



480 Pikes View Drive, Erie, CO 80516 – Upper Level



TOTAL: 3811 sq. ft
Below Ground: 1053 sq. ft, FLOOR 2: 1225 sq. ft, FLOOR 3: 1533 sq. ft
EXCLUDED AREAS: ELECTRICAL ROOM: 83 sq. ft, PORCH: 167 sq. ft, PATIO: 241 sq. ft,
COVERED PATIO: 166 sq. ft, GARAGE: 382 sq. ft, FIREPLACE: 12 sq. ft
MEASUREMENTS CALCULATED BY V1Photos.com ARE DEEMED HIGHLY RELIABLE BUT NOT GUARANTEED.



Disclaimer: Sizes and Dimensions are Approximate, Actual May Vary.

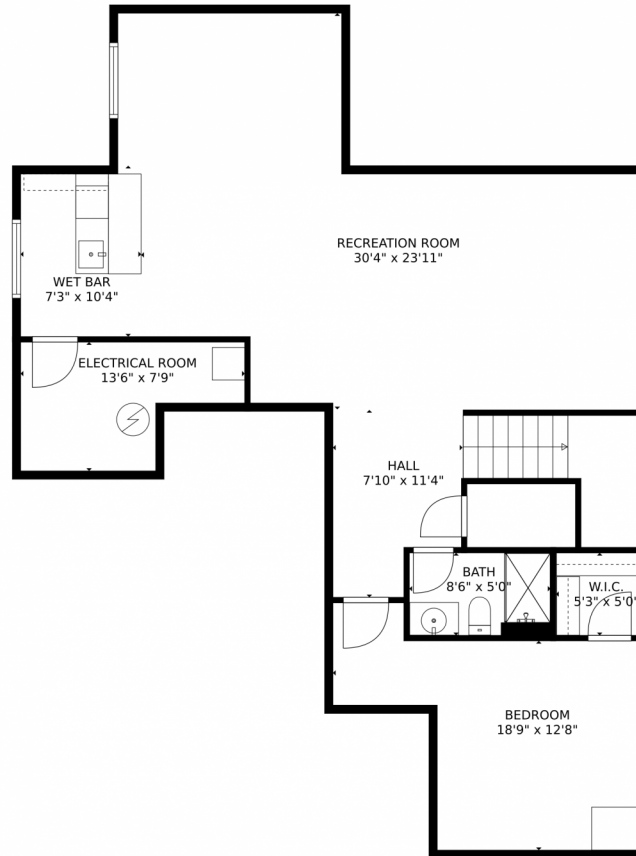


Taylor Haas
303-665-7368
taylorh@coloradorpm.com
<https://www.coloradorpm.com/available-rental-properties-denver>



Scan code
for more
property
details

480 Pikes View Drive, Erie, CO 80516 – Lower Level



TOTAL: 3811 sq. ft
Below Ground: 1053 sq. ft, FLOOR 2: 1225 sq. ft, FLOOR 3: 1533 sq. ft
EXCLUDED AREAS: ELECTRICAL ROOM: 83 sq. ft, PORCH: 167 sq. ft, PATIO: 241 sq. ft,
COVERED PATIO: 166 sq. ft, GARAGE: 382 sq. ft, FIREPLACE: 12 sq. ft

MEASUREMENTS CALCULATED BY V1Photos.com ARE DEEMED HIGHLY RELIABLE BUT NOT GUARANTEED.



Disclaimer: Sizes and Dimensions are Approximate, Actual May Vary.



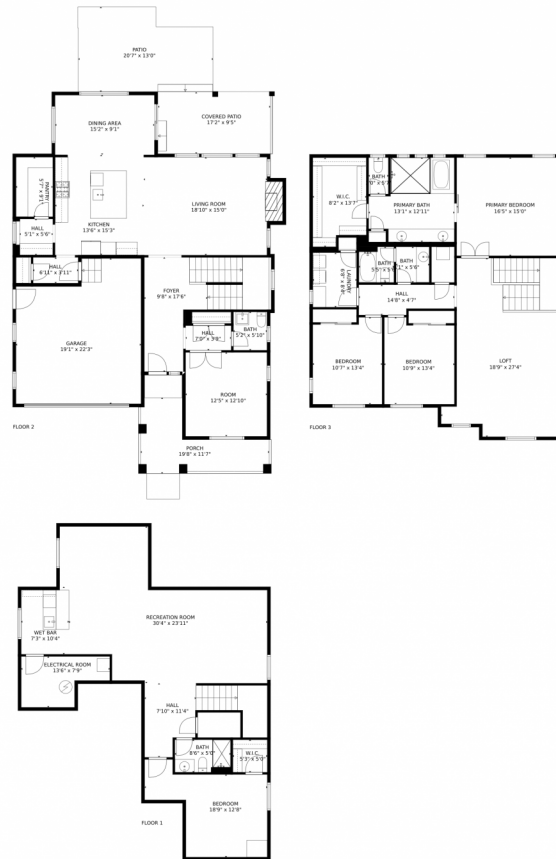
Taylor Haas
303-665-7368
taylorh@coloradorpm.com
<https://www.coloradorpm.com/available-rental-properties-denver>



Scan code
for more
property
details



480 Pikes View Drive, Erie, CO 80516 – All Levels



TOTAL: 3811 sq. ft
Below Ground: 1053 sq. ft, FLOOR 2: 1225 sq. ft, FLOOR 3: 1533 sq. ft
EXCLUDED AREAS: ELECTRICAL ROOM: 83 sq. ft, PORCH: 167 sq. ft, PATIO: 241 sq. ft,
COVERED PATIO: 166 sq. ft, GARAGE: 382 sq. ft, FIREPLACE: 12 sq. ft

MEASUREMENTS CALCULATED BY V1Photos.com ARE DEEMED HIGHLY RELIABLE BUT NOT GUARANTEED.



Disclaimer: Sizes and Dimensions are Approximate, Actual May Vary.



Taylor Haas

303-665-7368

taylorh@coloradorpm.com

<https://www.coloradorpm.com/available-rental-properties-denver>



Scan code
for more
property
details

