



6339 Sapphire Pointe Boulevard
 Castle Rock, CO 80108
 COMMUNITY: Sapphire Pointe



6339 Sapphire Pointe Boulevard, Castle Rock, CO 80108 - All Levels



Single Family



6270 SQFT



4 Beds



3/1 Baths



3 Car



0.23 Acre



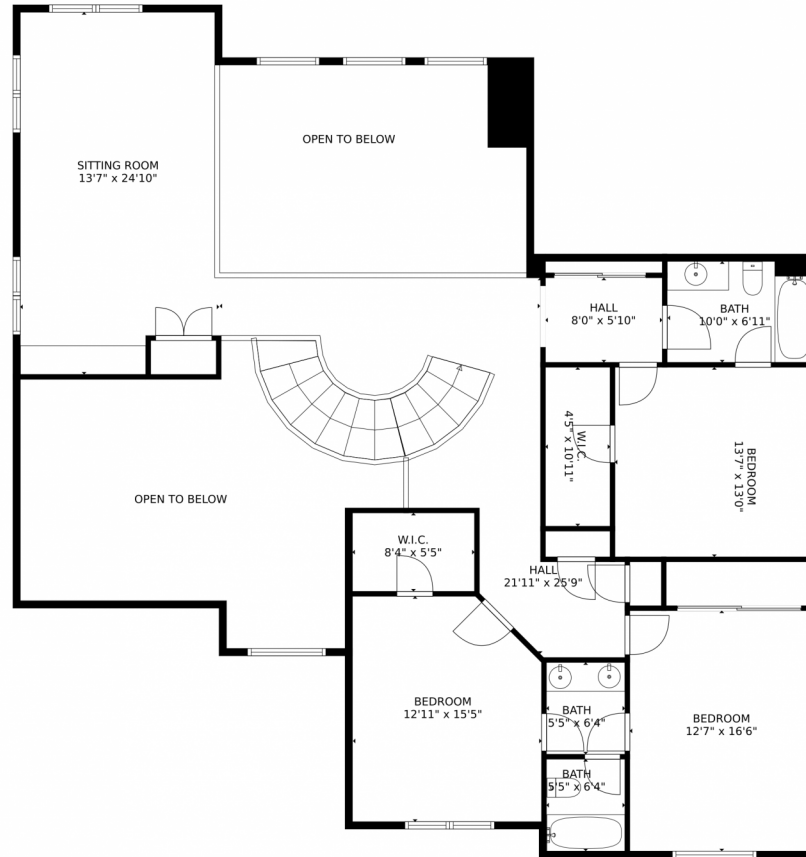
Andrea Bunker Marrese
 303-870-2689
 bunkerandrea@aol.com



Scan code
 for more
 property
 details



6339 Sapphire Pointe Boulevard, Castle Rock, CO 80108 – Upper Level



TOTAL: 6224 sq. ft
Below Ground: 2246 sq. ft, FLOOR 2: 2318 sq. ft, FLOOR 3: 1660 sq. ft
EXCLUDED AREAS: GARAGE: 657 sq. ft, PORCH: 43 sq. ft, DECK: 391 sq. ft,
OPEN TO BELOW: 660 sq. ft
MEASUREMENTS CALCULATED BY V1Photos.com ARE DEEMED HIGHLY RELIABLE BUT NOT GUARANTEED.



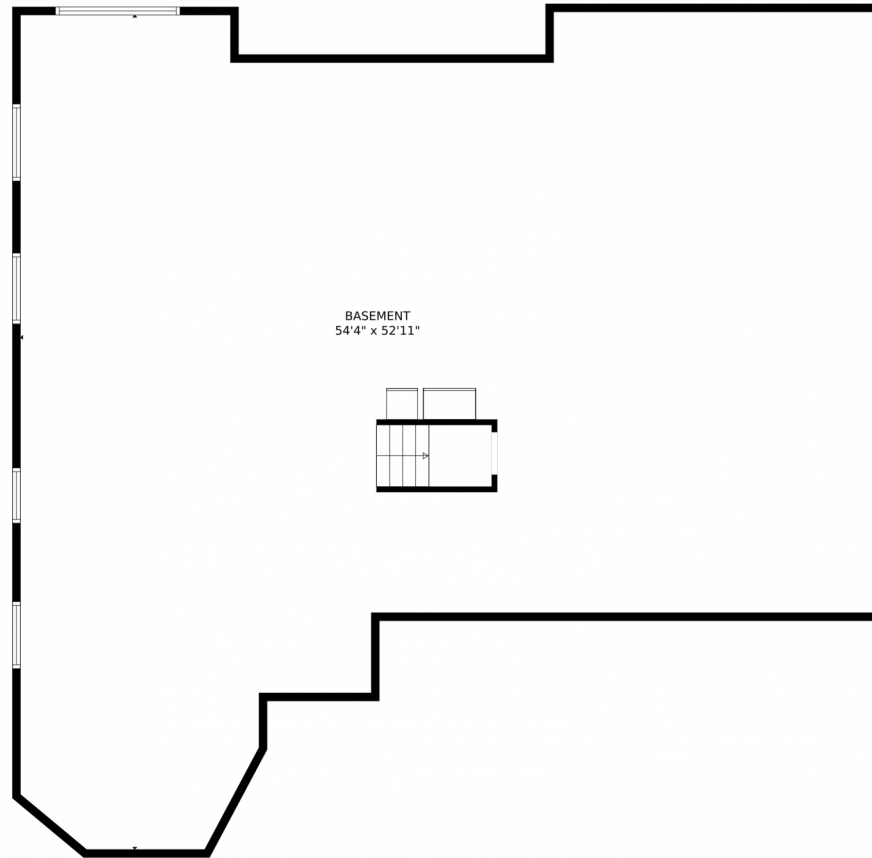
Disclaimer: Sizes and Dimensions are Approximate, Actual May Vary.



Andrea Bunker Marrese
303-870-2689
bunkerandrea@aol.com



6339 Sapphire Pointe Boulevard, Castle Rock, CO 80108 – Lower Level



TOTAL: 6224 sq. ft
Below Ground: 2246 sq. ft, FLOOR 2: 2318 sq. ft, FLOOR 3: 1660 sq. ft
EXCLUDED AREAS: GARAGE: 657 sq. ft, PORCH: 43 sq. ft, DECK: 391 sq. ft,
OPEN TO BELOW: 660 sq. ft

MEASUREMENTS CALCULATED BY V1Photos.com ARE DEEMED HIGHLY RELIABLE BUT NOT GUARANTEED.



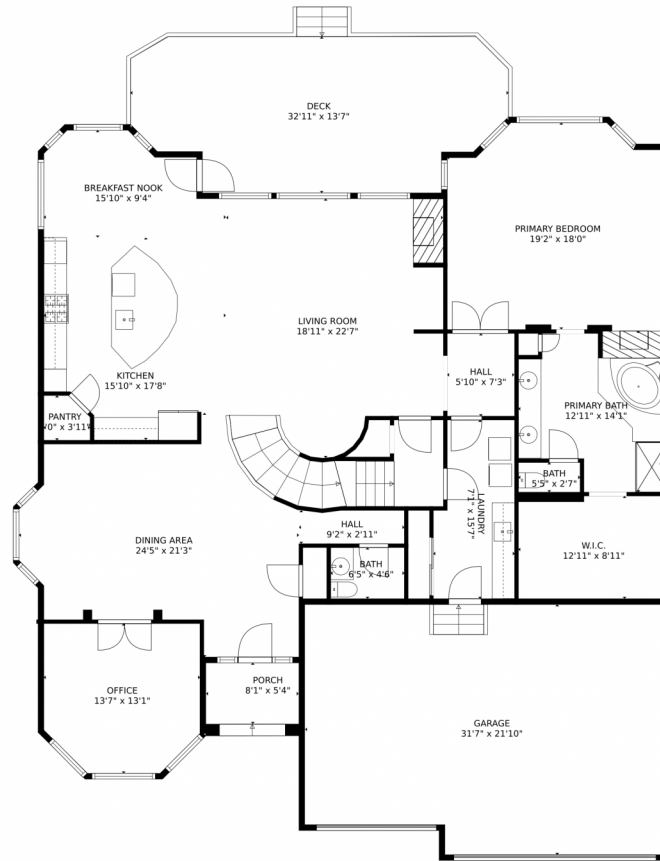
Disclaimer: Sizes and Dimensions are Approximate, Actual May Vary.



Andrea Bunker Marrese
303-870-2689
bunkerandrea@aol.com



6339 Sapphire Pointe Boulevard, Castle Rock, CO 80108 – Main Level



TOTAL: 6224 sq. ft
Below Ground: 2246 sq. ft, FLOOR 2: 2318 sq. ft, FLOOR 3: 1660 sq. ft
EXCLUDED AREAS: GARAGE: 657 sq. ft, PORCH: 43 sq. ft, DECK: 391 sq. ft,
OPEN TO BELOW: 660 sq. ft

MEASUREMENTS CALCULATED BY V1Photos.com ARE DEEMED HIGHLY RELIABLE BUT NOT GUARANTEED.



Disclaimer: Sizes and Dimensions are Approximate, Actual May Vary.



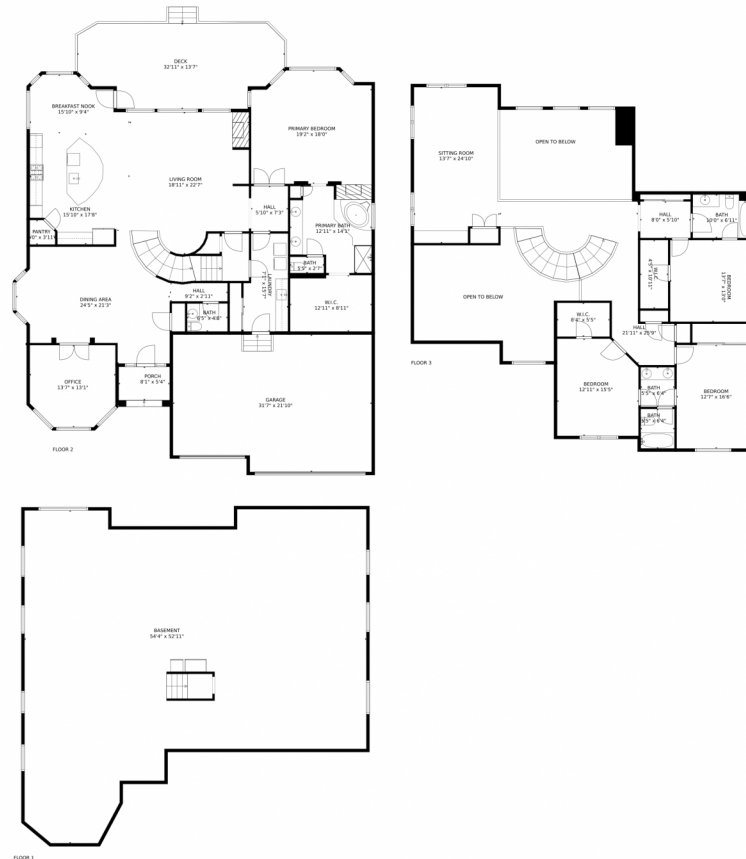
Andrea Bunker Marrese
303-870-2689
bunkerandrea@aol.com



Scan code
for more
property
details



6339 Sapphire Pointe Boulevard, Castle Rock, CO 80108 – All Levels



TOTAL: 6224 sq. ft
Below Ground: 2246 sq. ft, FLOOR 2: 2318 sq. ft, FLOOR 3: 1660 sq. ft
EXCLUDED AREAS: GARAGE: 657 sq. ft, PORCH: 43 sq. ft, DECK: 391 sq. ft,
OPEN TO BELOW: 660 sq. ft

MEASUREMENTS CALCULATED BY V1Photos.com ARE DEEMED HIGHLY RELIABLE BUT NOT GUARANTEED.



Disclaimer: Sizes and Dimensions are Approximate, Actual May Vary.



Andrea Bunker Marrese
303-870-2689
bunkerandrea@aol.com

