



8340 West 67th Avenue  
 Arvada, CO 80004  
 COMMUNITY: Carrlen



Single Family



2375 SQFT



4 Beds



3 Baths



0.37 Acre



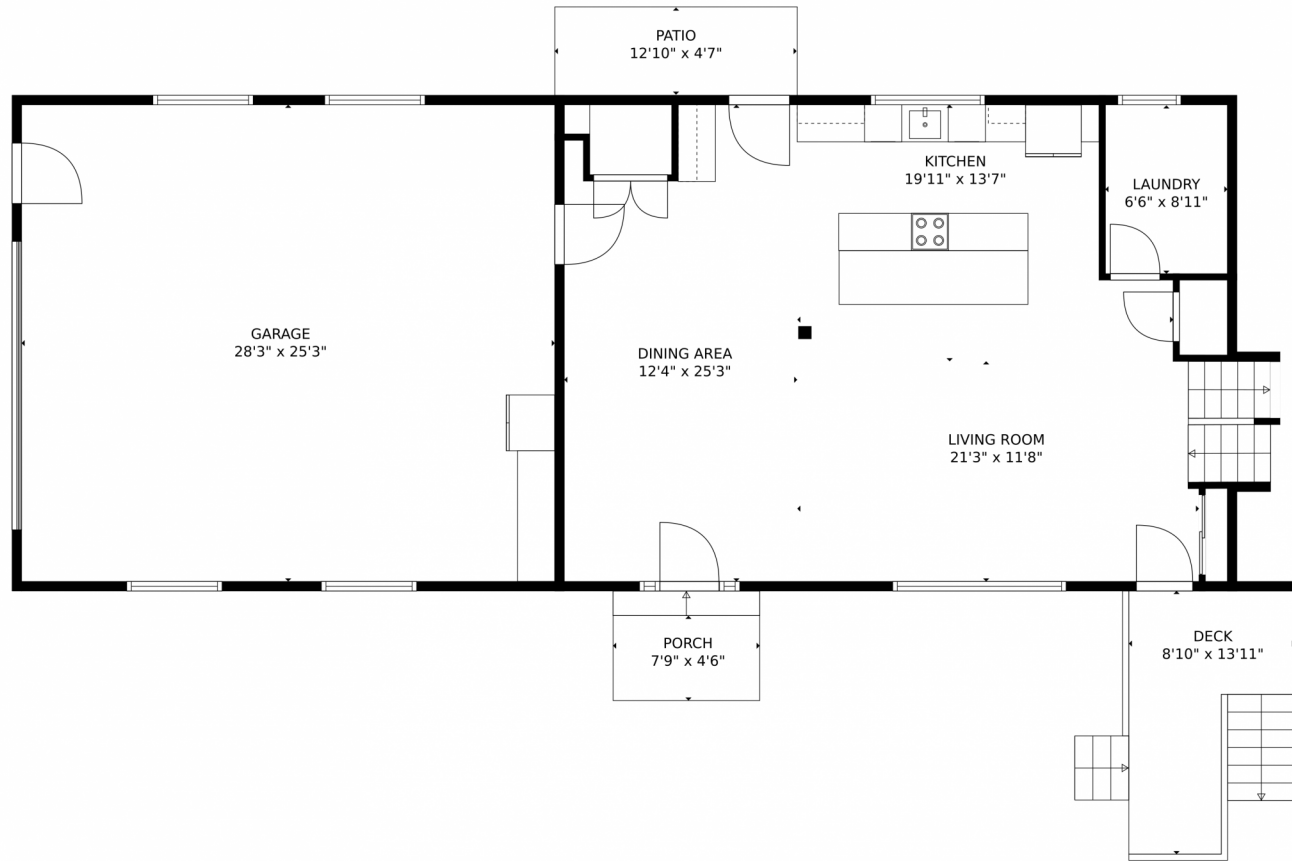
AJ Chamberlin  
 303-588-8999  
 aj@phoenixctd.com



Scan code  
 for more  
 property  
 details



# 8340 West 67th Avenue, Arvada, CO 80004 – Main Floor



**TOTAL: 2259 sq. ft**

Below Ground: 304 sq. ft, Below Ground: 479 sq. ft, FLOOR 3: 902 sq. ft, FLOOR 4: 574 sq. ft  
EXCLUDED AREAS: ELECTRICAL ROOM: 222 sq. ft, DECK: 699 sq. ft, PATIO: 60 sq. ft,  
PORCH: 45 sq. ft, GARAGE: 713 sq. ft

MEASUREMENTS CALCULATED BY V1Photos.com ARE DEEMED HIGHLY RELIABLE BUT NOT GUARANTEED.

Disclaimer: Sizes and Dimensions are Approximate, Actual May Vary.

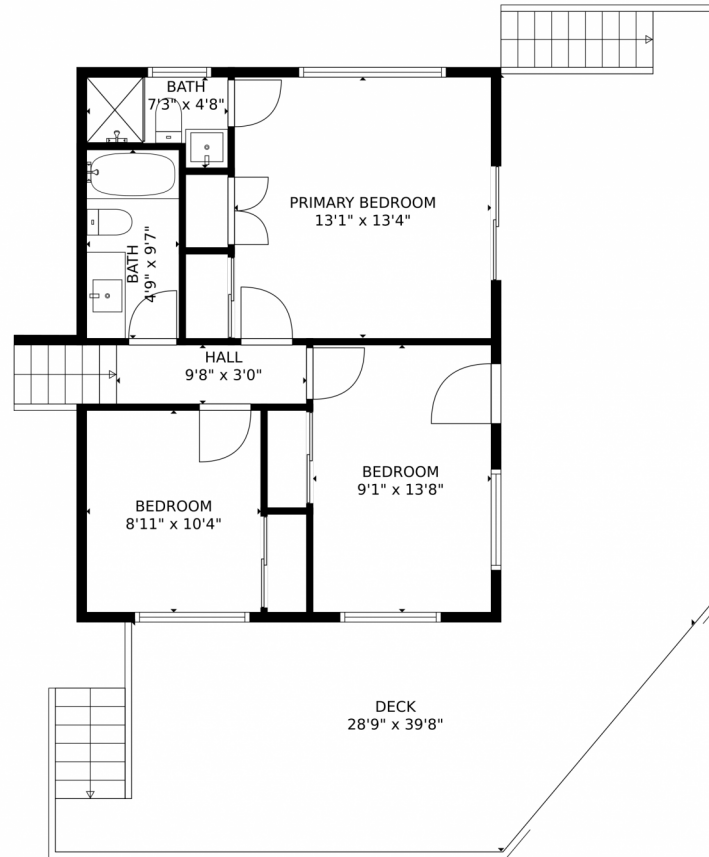


AJ Chamberlin  
303-588-8999  
aj@phoenixctd.com



Scan code  
for more  
property  
details





**TOTAL: 2259 sq. ft**  
Below Ground: 304 sq. ft, Below Ground: 479 sq. ft, FLOOR 3: 902 sq. ft, FLOOR 4: 574 sq. ft  
EXCLUDED AREAS: ELECTRICAL ROOM: 222 sq. ft, DECK: 699 sq. ft, PATIO: 60 sq. ft,  
PORCH: 45 sq. ft, GARAGE: 713 sq. ft

MEASUREMENTS CALCULATED BY V1Photos.com ARE DEEMED HIGHLY RELIABLE BUT NOT GUARANTEED.

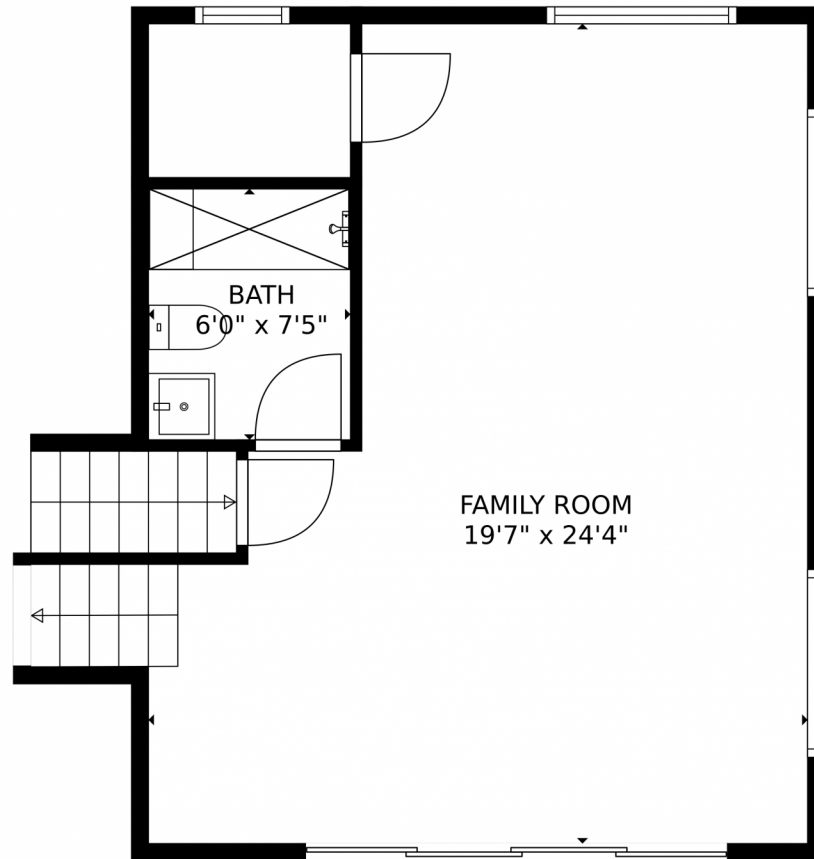


Disclaimer: Sizes and Dimensions are Approximate, Actual May Vary.



AJ Chamberlin  
303-588-8999  
aj@phoenixctd.com





**TOTAL: 2259 sq. ft**  
Below Ground: 304 sq. ft, Below Ground: 479 sq. ft, FLOOR 3: 902 sq. ft, FLOOR 4: 574 sq. ft  
EXCLUDED AREAS: ELECTRICAL ROOM: 222 sq. ft, DECK: 699 sq. ft, PATIO: 60 sq. ft,  
PORCH: 45 sq. ft, GARAGE: 713 sq. ft

MEASUREMENTS CALCULATED BY V1Photos.com ARE DEEMED HIGHLY RELIABLE BUT NOT GUARANTEED.

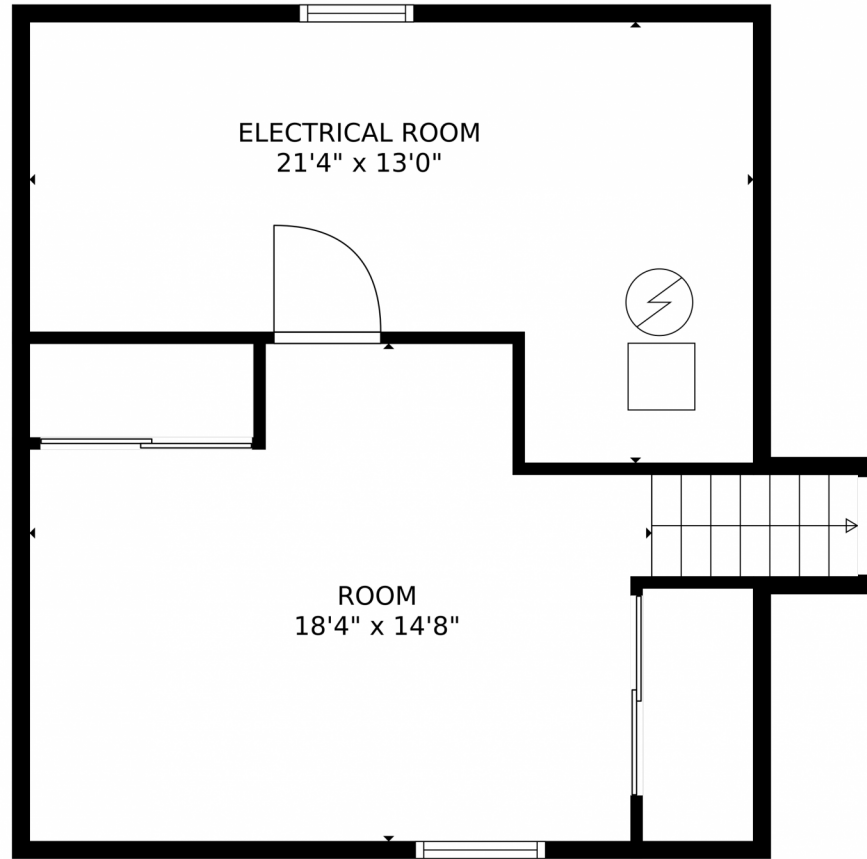


Disclaimer: Sizes and Dimensions are Approximate, Actual May Vary.



AJ Chamberlin  
303-588-8999  
aj@phoenixctd.com





**TOTAL: 2259 sq. ft**  
Below Ground: 304 sq. ft, Below Ground: 479 sq. ft, FLOOR 3: 902 sq. ft, FLOOR 4: 574 sq. ft  
EXCLUDED AREAS: ELECTRICAL ROOM: 222 sq. ft, DECK: 699 sq. ft, PATIO: 60 sq. ft,  
PORCH: 45 sq. ft, GARAGE: 713 sq. ft

MEASUREMENTS CALCULATED BY V1Photos.com ARE DEEMED HIGHLY RELIABLE BUT NOT GUARANTEED.



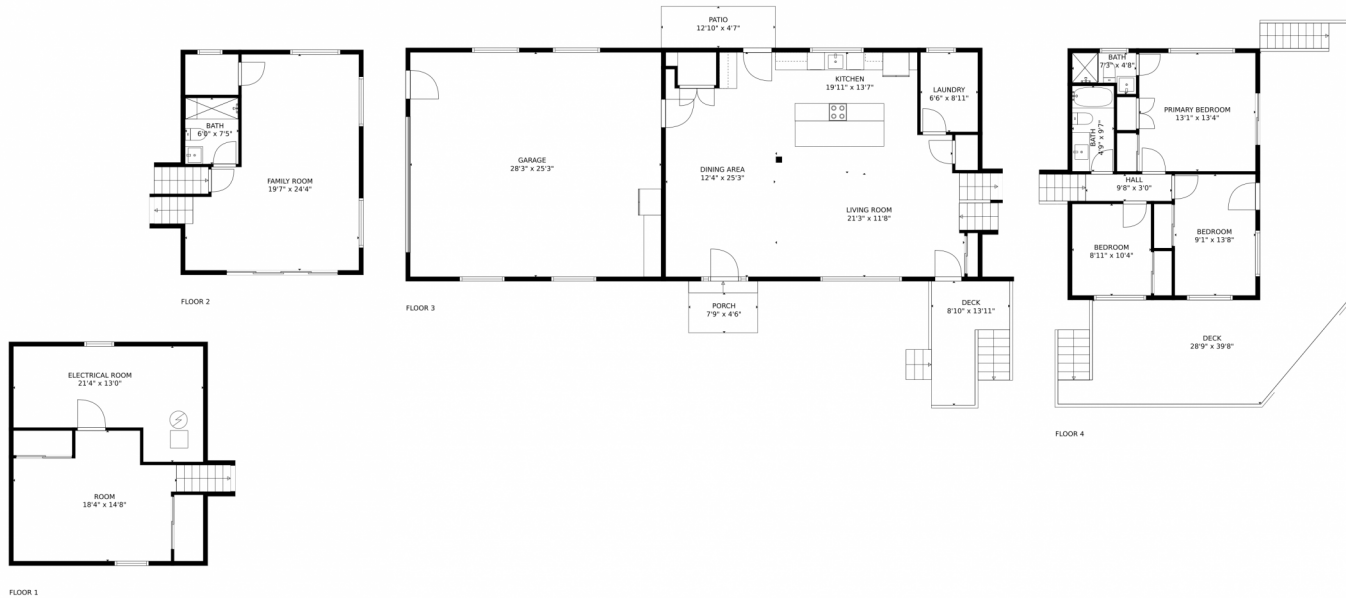
Disclaimer: Sizes and Dimensions are Approximate, Actual May Vary.



AJ Chamberlin  
303-588-8999  
aj@phoenixctd.com



# 8340 West 67th Avenue, Arvada, CO 80004 – All Floors



**TOTAL: 2259 sq. ft**

Below Ground: 304 sq. ft, Below Ground: 479 sq. ft, FLOOR 3: 902 sq. ft, FLOOR 4: 574 sq. ft  
EXCLUDED AREAS: ELECTRICAL ROOM: 222 sq. ft, DECK: 699 sq. ft, PATIO: 60 sq. ft,  
PORCH: 45 sq. ft, GARAGE: 713 sq. ft

MEASUREMENTS CALCULATED BY V1Photos.com ARE DEEMED HIGHLY RELIABLE BUT NOT GUARANTEED.



Disclaimer: Sizes and Dimensions are Approximate, Actual May Vary.



AJ Chamberlin  
303-588-8999  
aj@phoenixctd.com



Scan code  
for more  
property  
details

