

Single Family 3055 SQFT

PROPERTY DETAILS

Welcome to your dream home at 14016 West 59th Place in Arvada, CO! This spacious 3055 sq. ft. home offers 5 bedrooms and 3.5 bathrooms. The attention to detail and quality craftsmanship throughout is impressive. The open kitchen is a chef's dream, with white cabinetry, stainless steel appliances, tasteful backsplash, and light stone countertops. The primary bedroom with en suite master bath is a tranquil retreat with ample storage. The finished basement offers additional living space and bedrooms. The backyard features a deck, heated pool, childproof fence, and RV storage.



Rachel Martinez
 305-450-2820
 rachel.dearmas@gmail.com



14016 West 59th Place, Arvada, CO 80004 – Main Level



TOTAL: 3114 sq. ft
Below Ground: 1124 sq. ft, FLOOR 2: 1190 sq. ft, FLOOR 3: 800 sq. ft
EXCLUDED AREAS: ELECTRICAL ROOM: 65 sq. ft, FIREPLACE: 20 sq. ft, GARAGE: 519 sq. ft,
STORAGE: 120 sq. ft, PORCH: 142 sq. ft, PATIO: 833 sq. ft,
COVERED DECK: 322 sq. ft

MEASUREMENTS CALCULATED BY V1Photos.com ARE DEEMED HIGHLY RELIABLE BUT NOT GUARANTEED.



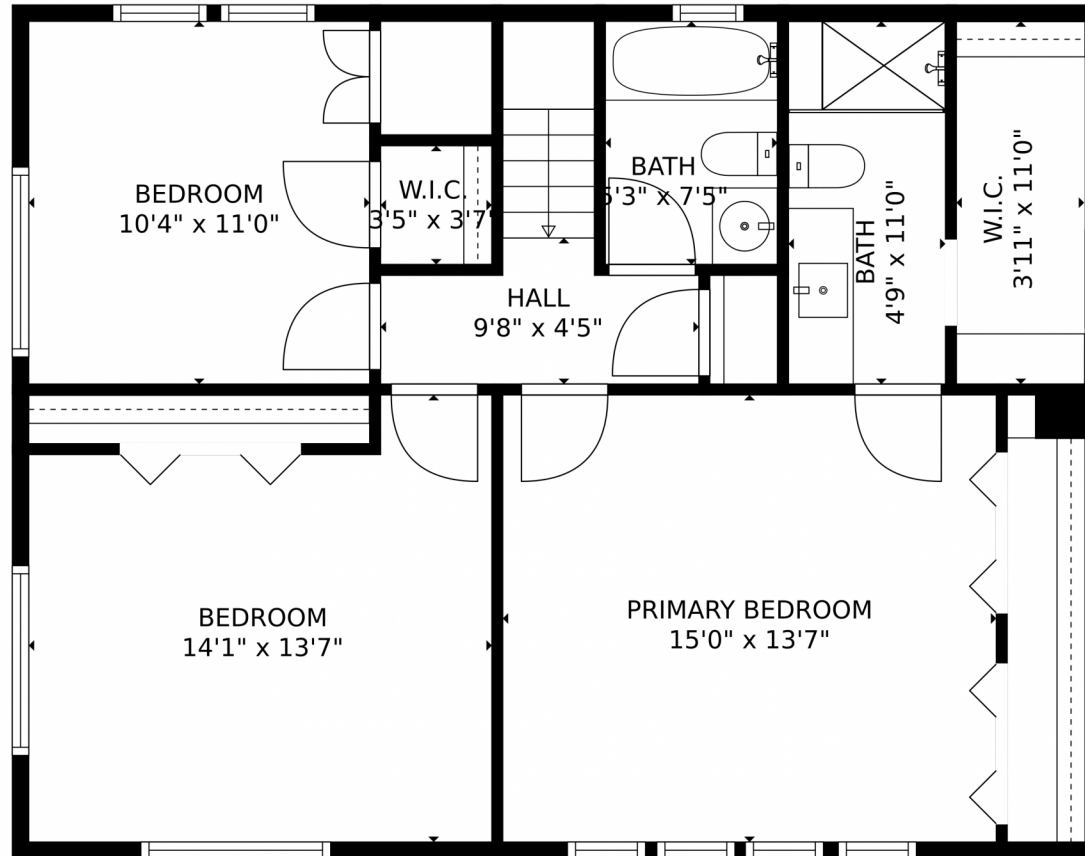
Disclaimer: Sizes and Dimensions are Approximate, Actual May Vary.



Rachel Martinez
305-450-2820
rachel.dearmas@gmail.com



14016 West 59th Place, Arvada, CO 80004 – Second Level



TOTAL: 3114 sq. ft
Below Ground: 1124 sq. ft, FLOOR 2: 1190 sq. ft, FLOOR 3: 800 sq. ft
EXCLUDED AREAS: ELECTRICAL ROOM: 65 sq. ft, FIREPLACE: 20 sq. ft, GARAGE: 519 sq. ft,
STORAGE: 120 sq. ft, PORCH: 142 sq. ft, PATIO: 833 sq. ft,
COVERED DECK: 322 sq. ft

MEASUREMENTS CALCULATED BY V1Photos.com ARE DEEMED HIGHLY RELIABLE BUT NOT GUARANTEED.



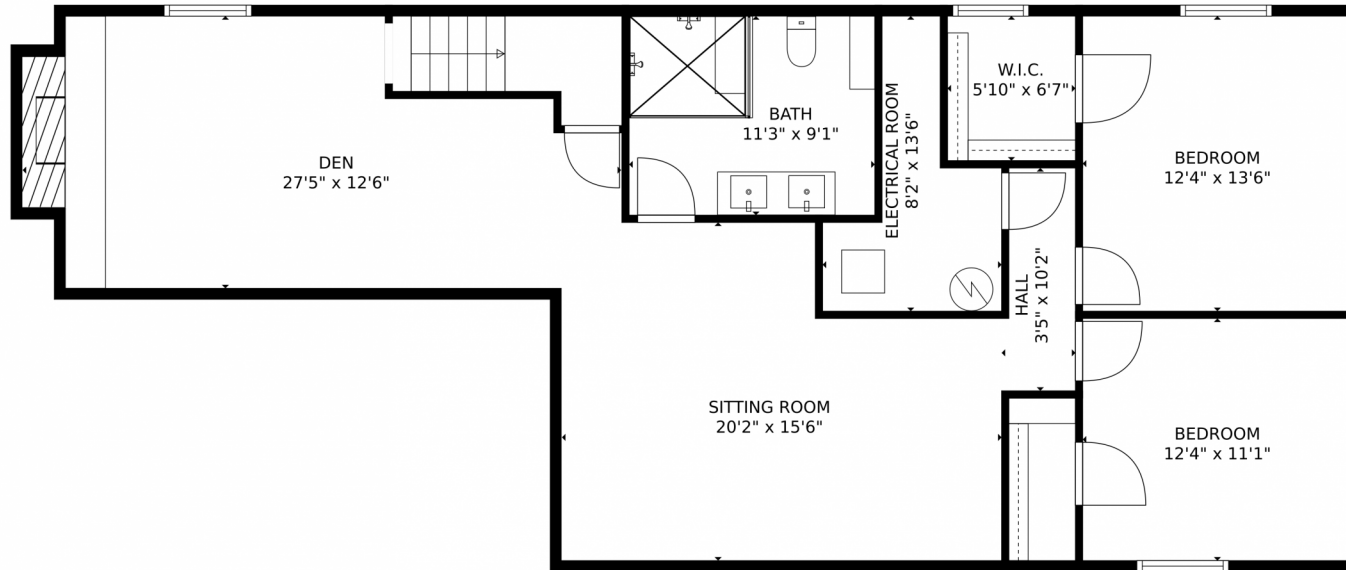
Disclaimer: Sizes and Dimensions are Approximate, Actual May Vary.



Rachel Martinez
305-450-2820
rachel.dearmas@gmail.com



14016 West 59th Place, Arvada, CO 80004 – Lower Level



TOTAL: 3114 sq. ft
Below Ground: 1124 sq. ft, FLOOR 2: 1190 sq. ft, FLOOR 3: 800 sq. ft
EXCLUDED AREAS: ELECTRICAL ROOM: 65 sq. ft, FIREPLACE: 20 sq. ft, GARAGE: 519 sq. ft,
STORAGE: 120 sq. ft, PORCH: 142 sq. ft, PATIO: 833 sq. ft,
COVERED DECK: 322 sq. ft

MEASUREMENTS CALCULATED BY V1Photos.com ARE DEEMED HIGHLY RELIABLE BUT NOT GUARANTEED.



Disclaimer: Sizes and Dimensions are Approximate, Actual May Vary.



Rachel Martinez
305-450-2820
rachel.dearmas@gmail.com



14016 West 59th Place, Arvada, CO 80004 – All Levels



TOTAL: 3114 sq. ft
 Below Ground: 1124 sq. ft, FLOOR 2: 1190 sq. ft, FLOOR 3: 800 sq. ft
 EXCLUDED AREAS: ELECTRICAL ROOM: 65 sq. ft, FIREPLACE: 20 sq. ft, GARAGE: 519 sq. ft,
 STORAGE: 120 sq. ft, PORCH: 142 sq. ft, PATIO: 833 sq. ft,
 COVERED DECK: 322 sq. ft

MEASUREMENTS CALCULATED BY V1Photos.com ARE DEEMED HIGHLY RELIABLE BUT NOT GUARANTEED.



Disclaimer: Sizes and Dimensions are Approximate, Actual May Vary.



Rachel Martinez
 305-450-2820
 rachel.dearmas@gmail.com



Scan code
 for more
 property
 details