

12 Apache Plume Street  
Brighton, CO 80601



Single Family



2062 SQFT



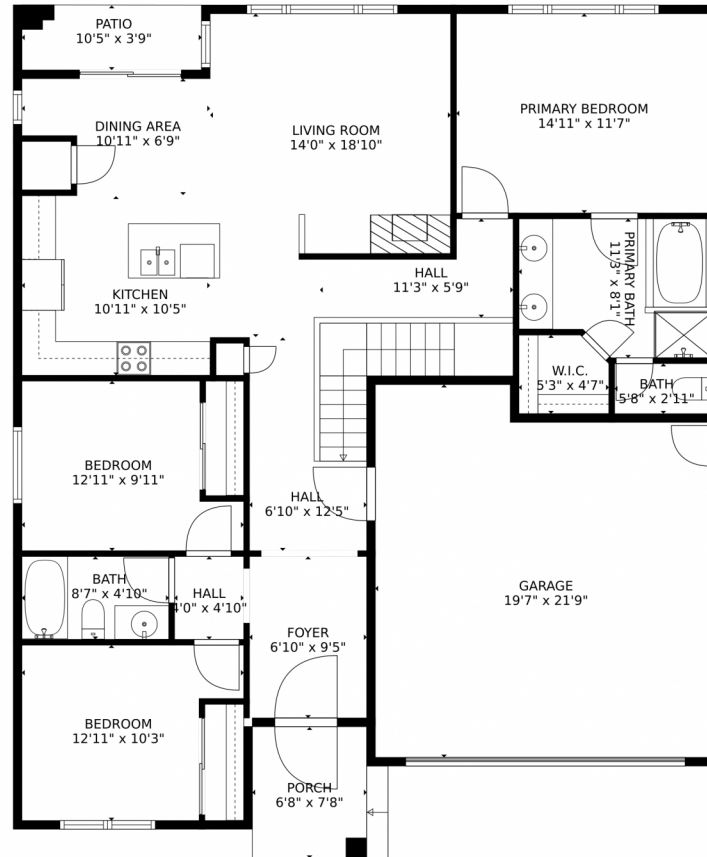
**Jo Klimecki**  
720-249-7453  
jodi@ccpnoco.com



Scan code  
for more  
property  
details



# 12 Apache Plume Street, Brighton, CO 80601 – Main Level



**TOTAL: 1866 sq. ft**  
Below Ground: 558 sq. ft, FLOOR 2: 1308 sq. ft  
EXCLUDED AREAS: ELECTRICAL ROOM: 45 sq. ft, GARAGE: 400 sq. ft, PATIO: 40 sq. ft,  
PORCH: 51 sq. ft

MEASUREMENTS CALCULATED BY V1Photos.com ARE DEEMED HIGHLY RELIABLE BUT NOT GUARANTEED.



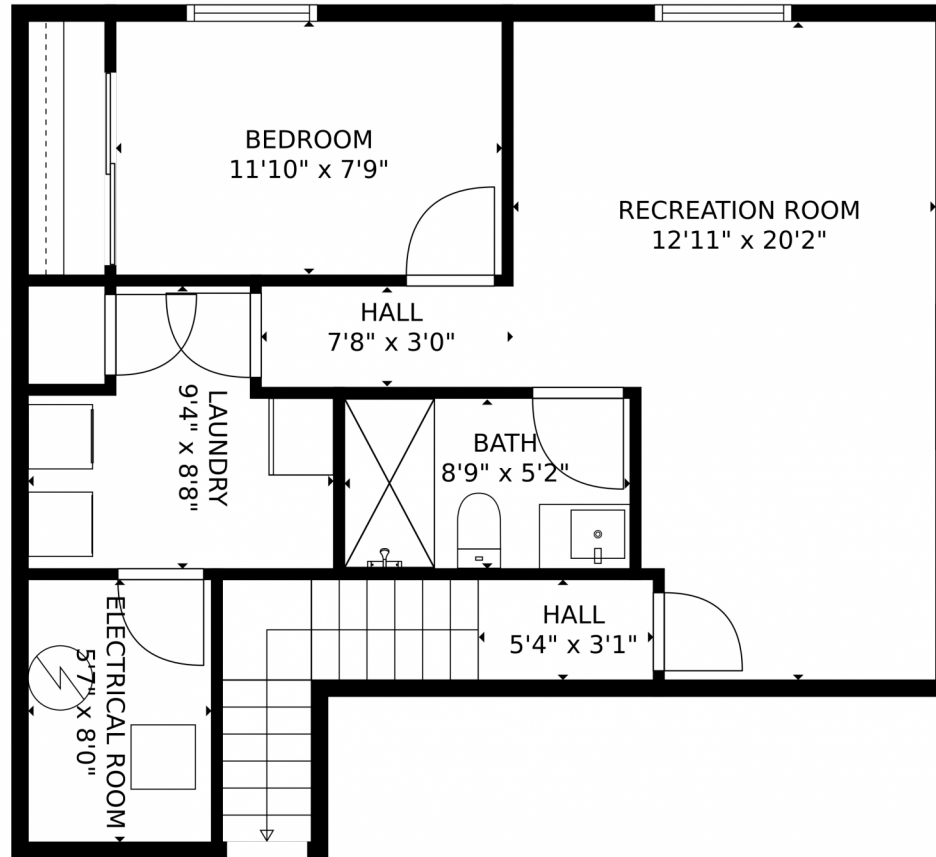
Disclaimer: Sizes and Dimensions are Approximate, Actual May Vary.



**Jo Klimecki**  
720-249-7453  
jodi@ccpnoco.com



12 Apache Plume Street, Brighton, CO 80601 — Lower Level



**TOTAL: 1866 sq. ft**  
Below Ground: 558 sq. ft, FLOOR 2: 1308 sq. ft  
EXCLUDED AREAS: ELECTRICAL ROOM: 45 sq. ft, GARAGE: 400 sq. ft, PATIO: 40 sq. ft,  
PORCH: 51 sq. ft

MEASUREMENTS CALCULATED BY V1Photos.com ARE DEEMED HIGHLY RELIABLE BUT NOT GUARANTEED.



Disclaimer: Sizes and Dimensions are Approximate, Actual May Vary.

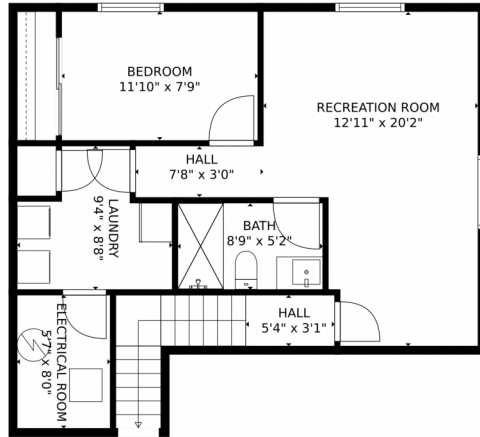


**Jo Klimecki**  
720-249-7453  
jodi@ccpnoco.com

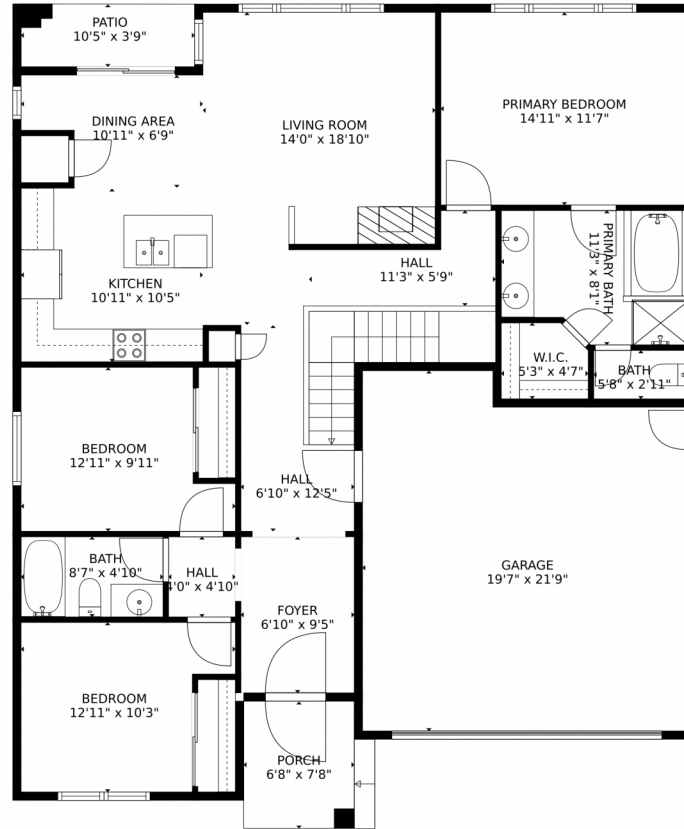


Scan code  
for more  
property  
details

# 12 Apache Plume Street, Brighton, CO 80601 – All Levels



FLOOR 1



FLOOR 2

**TOTAL: 1866 sq. ft**  
Below Ground: 558 sq. ft, FLOOR 2: 1308 sq. ft  
EXCLUDED AREAS: ELECTRICAL ROOM: 45 sq. ft, GARAGE: 400 sq. ft, PATIO: 40 sq. ft, PORCH: 51 sq. ft

MEASUREMENTS CALCULATED BY V1Photos.COM ARE DEEMED HIGHLY RELIABLE BUT NOT GUARANTEED.



Disclaimer: Sizes and Dimensions are Approximate, Actual May Vary.



**Jo Klimecki**  
720-249-7453  
jodi@ccpnoco.com

