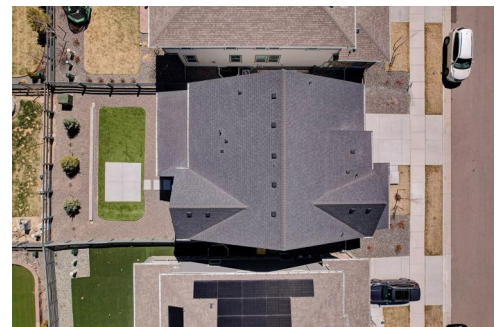
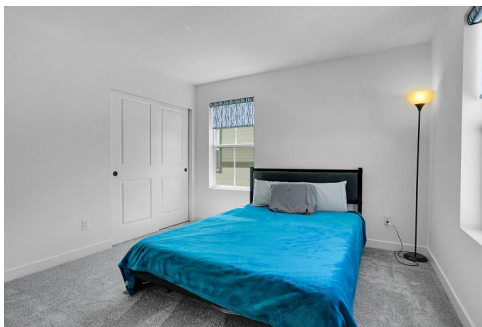




6350 Stable View Street  
Castle Pines, CO 80108



Single Family



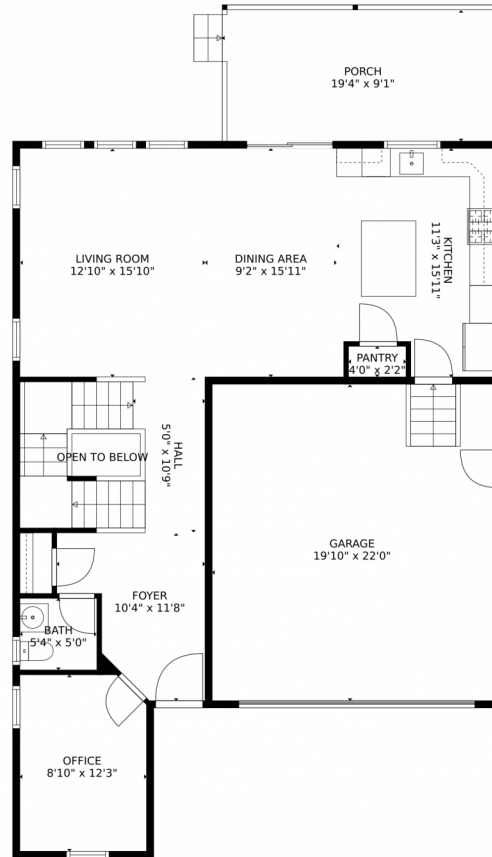
3303 SQFT



Donna (Underwood) Burkard  
720-775-7471  
donna@redunderwood.com  
<https://www.redunderwood.com>



# 6350 Stable View Street, Castle Pines, CO 80108 — main level



**TOTAL: 3071 sq. ft**  
Below Ground: 850 sq. ft, FLOOR 2: 896 sq. ft, FLOOR 3: 1325 sq. ft  
EXCLUDED AREAS: ELECTRICAL ROOM: 23 sq. ft, GARAGE: 437 sq. ft, OPEN TO BELOW: 27 sq. ft,  
PORCH: 186 sq. ft, EMBEDDED WINDOW: 5 sq. ft

MEASUREMENTS CALCULATED BY V1Photos.com ARE DEEMED HIGHLY RELIABLE BUT NOT GUARANTEED.



Disclaimer: Sizes and Dimensions are Approximate, Actual May Vary.



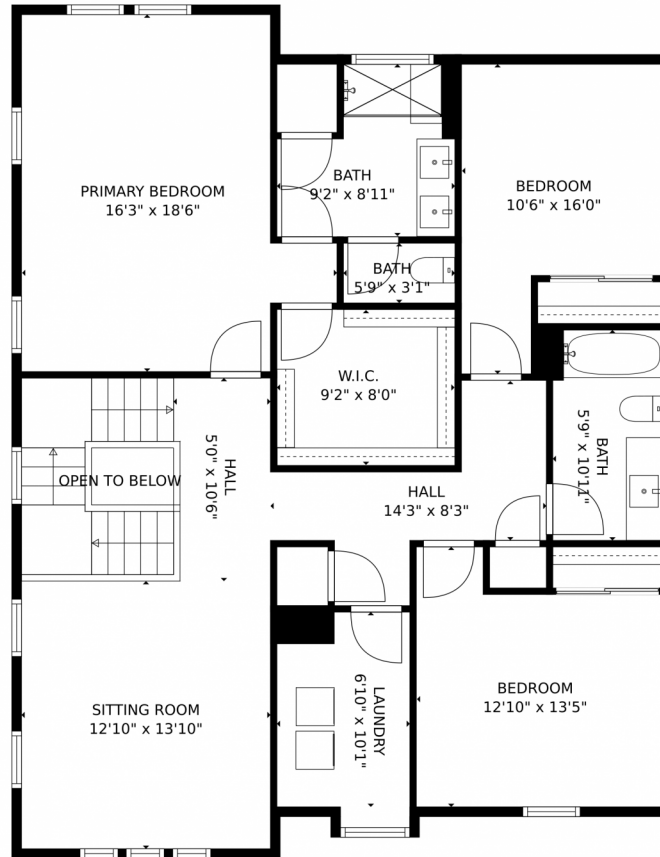
**Donna (Underwood) Burkard**  
720-775-7471  
donna@redunderwood.com  
<https://www.redunderwood.com>



Scan code  
for more  
property  
details



6350 Stable View Street, Castle Pines, CO 80108 — upper level



**TOTAL: 3071 sq. ft**  
Below Ground: 850 sq. ft, FLOOR 2: 896 sq. ft, FLOOR 3: 1325 sq. ft  
EXCLUDED AREAS: ELECTRICAL ROOM: 23 sq. ft, GARAGE: 437 sq. ft, OPEN TO BELOW: 27 sq. ft,  
PORCH: 186 sq. ft, EMBEDDED WINDOW: 5 sq. ft  
MEASUREMENTS CALCULATED BY V1Photos.COM ARE DEEMED HIGHLY RELIABLE BUT NOT GUARANTEED.



Disclaimer: Sizes and Dimensions are Approximate, Actual May Vary.



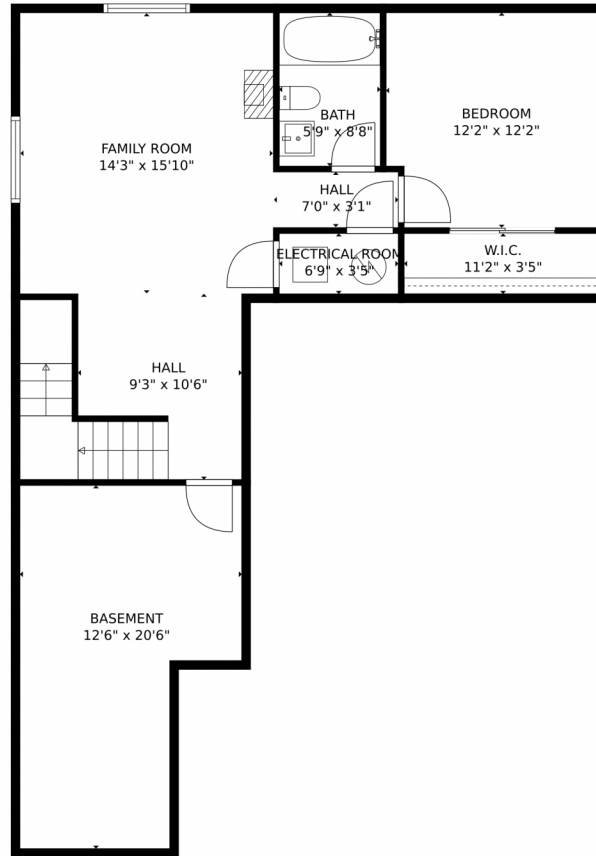
Donna (Underwood) Burkard  
720-775-7471  
donna@redunderwood.com  
<https://www.redunderwood.com>



Scan code for more property details



6350 Stable View Street, Castle Pines, CO 80108 — lower level



**TOTAL: 3071 sq. ft**  
Below Ground: 850 sq. ft, FLOOR 2: 896 sq. ft, FLOOR 3: 1325 sq. ft  
EXCLUDED AREAS: ELECTRICAL ROOM: 23 sq. ft, GARAGE: 437 sq. ft, OPEN TO BELOW: 27 sq. ft,  
PORCH: 186 sq. ft, EMBEDDED WINDOW: 5 sq. ft  
MEASUREMENTS CALCULATED BY V1Photos.com ARE DEEMED HIGHLY RELIABLE BUT NOT GUARANTEED.



Disclaimer: Sizes and Dimensions are Approximate, Actual May Vary.



**Donna (Underwood) Burkard**  
720-775-7471  
donna@redunderwood.com  
<https://www.redunderwood.com>



# 6350 Stable View Street, Castle Pines, CO 80108 — all levels



**TOTAL: 3071 sq. ft**  
 Below Ground: 850 sq. ft, FLOOR 2: 896 sq. ft, FLOOR 3: 1325 sq. ft  
 EXCLUDED AREAS: ELECTRICAL ROOM: 23 sq. ft, GARAGE: 437 sq. ft, OPEN TO BELOW: 27 sq. ft,  
 PORCH: 186 sq. ft, EMBEDDED WINDOW: 5 sq. ft

MEASUREMENTS CALCULATED BY V1Photos.com ARE DEEMED HIGHLY RELIABLE BUT NOT GUARANTEED.



Disclaimer: Sizes and Dimensions are Approximate, Actual May Vary.



**Donna (Underwood) Burkard**  
 720-775-7471  
 donna@redunderwood.com  
<https://www.redunderwood.com>



Scan code  
 for more  
 property  
 details

