

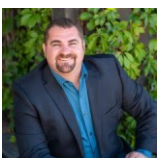
 Single Family

 1800 SQFT

 4 Beds

 2 Baths

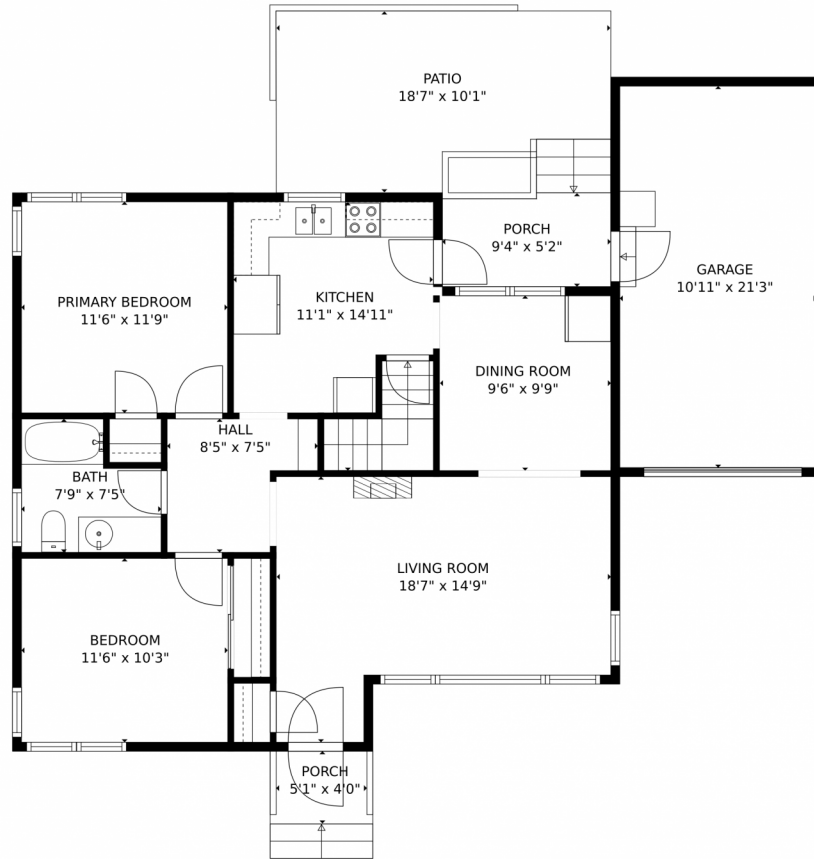
 1 Car



Brad Inhulsen
970-584-4144
brad@searsrealestate.com



1800 Fairacre Drive, Greeley, CO 80631 – Main Level



TOTAL: 1768 sq. ft
Below Ground: 884 sq. ft, FLOOR 2: 884 sq. ft
EXCLUDED AREAS: GARAGE: 233 sq. ft, PORCH: 94 sq. ft, PATIO: 178 sq. ft
MEASUREMENTS CALCULATED BY V1Photos.com ARE DEEMED HIGHLY RELIABLE BUT NOT GUARANTEED.



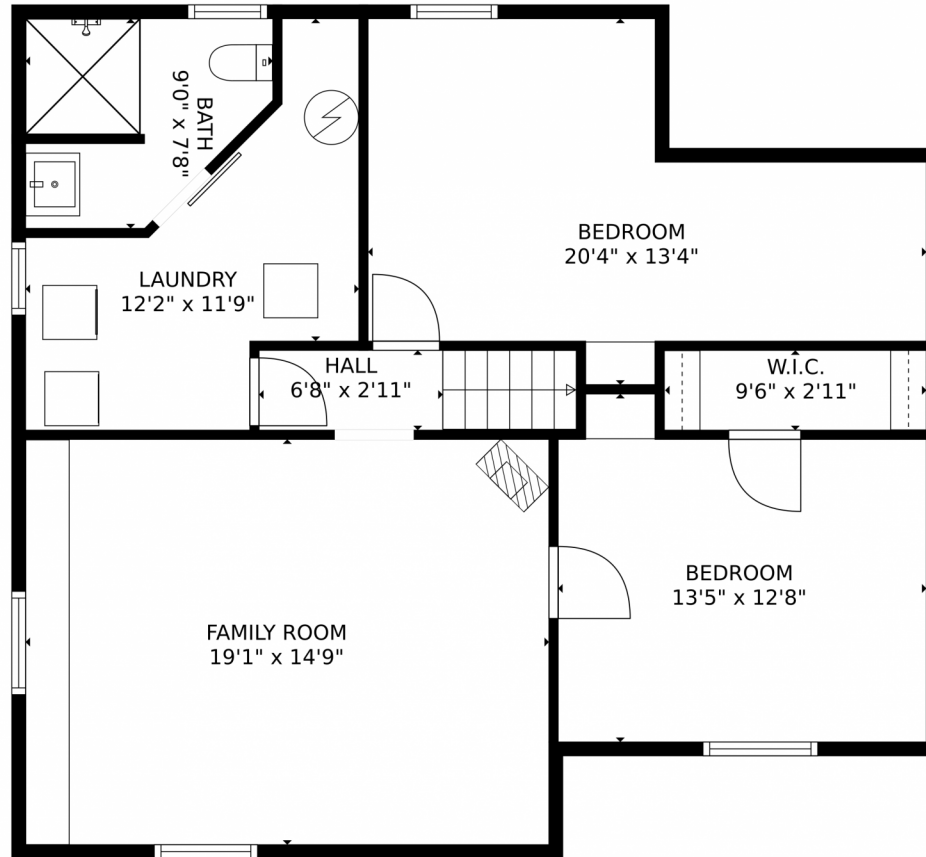
Disclaimer: Sizes and Dimensions are Approximate, Actual May Vary.



Brad Inhulsen
970-584-4144
brad@searsrealestate.com



1800 Fairacre Drive, Greeley, CO 80631 – Lower Level



TOTAL: 1768 sq. ft
Below Ground: 884 sq. ft, FLOOR 2: 884 sq. ft
EXCLUDED AREAS: GARAGE: 233 sq. ft, PORCH: 94 sq. ft, PATIO: 178 sq. ft
MEASUREMENTS CALCULATED BY V1Photos.com ARE DEEMED HIGHLY RELIABLE BUT NOT GUARANTEED.



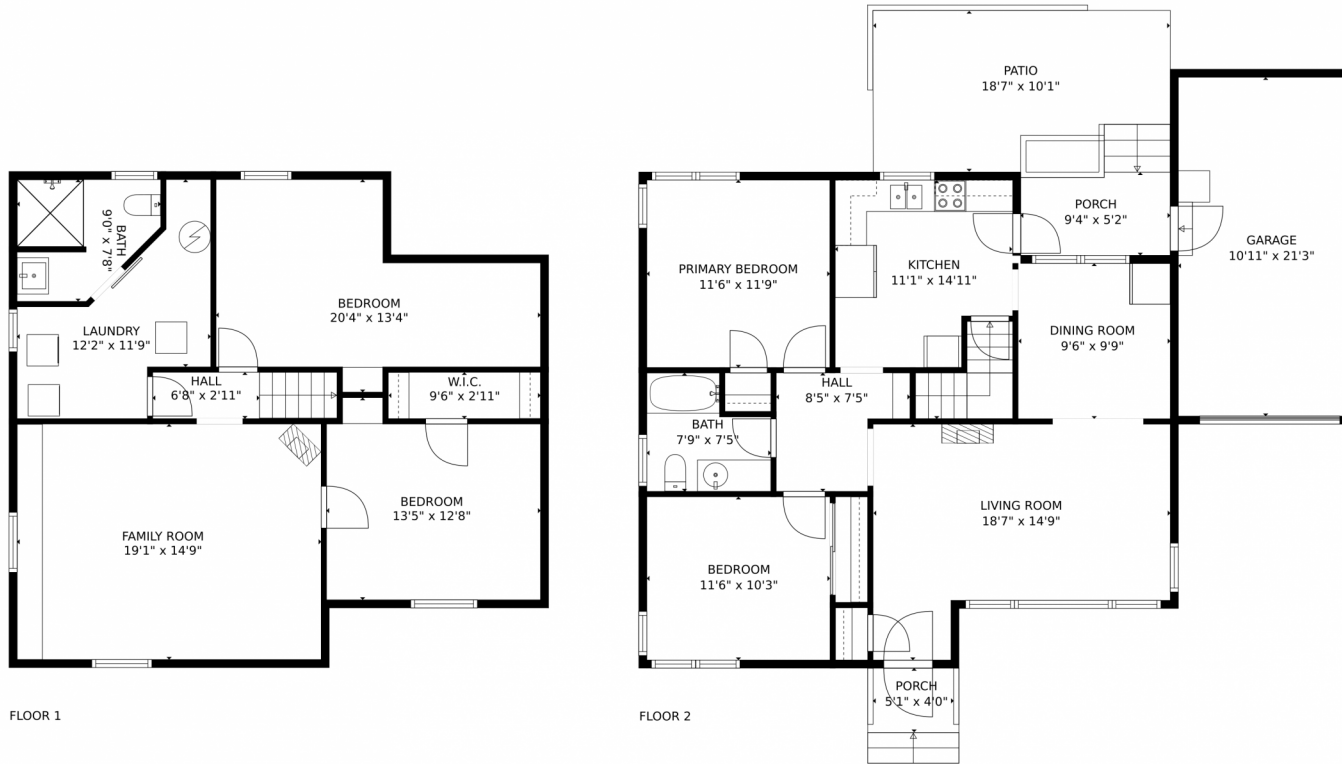
Disclaimer: Sizes and Dimensions are Approximate, Actual May Vary.



Brad Inhulsen
970-584-4144
brad@searsrealestate.com



1800 Fairacre Drive, Greeley, CO 80631 – All Levels



TOTAL: 1768 sq. ft
Below Ground: 884 sq. ft, FLOOR 2: 884 sq. ft
EXCLUDED AREAS: GARAGE: 233 sq. ft, PORCH: 94 sq. ft, PATIO: 178 sq. ft
MEASUREMENTS CALCULATED BY V1Photos.com ARE DEEMED HIGHLY RELIABLE BUT NOT GUARANTEED.



Disclaimer: Sizes and Dimensions are Approximate, Actual May Vary.



Brad Inhulsen
970-584-4144
brad@searsrealestate.com

