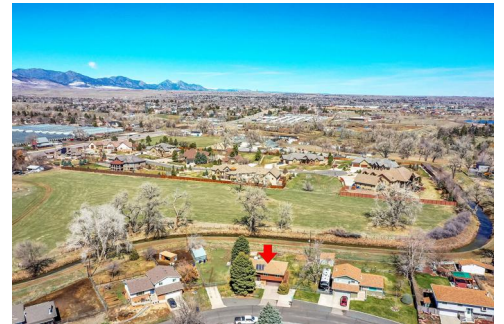


## Horse Property Unincorporated Golden



 Single Family  1632 SQFT  3 Beds  3 Baths  2 Car  0.34 Acre

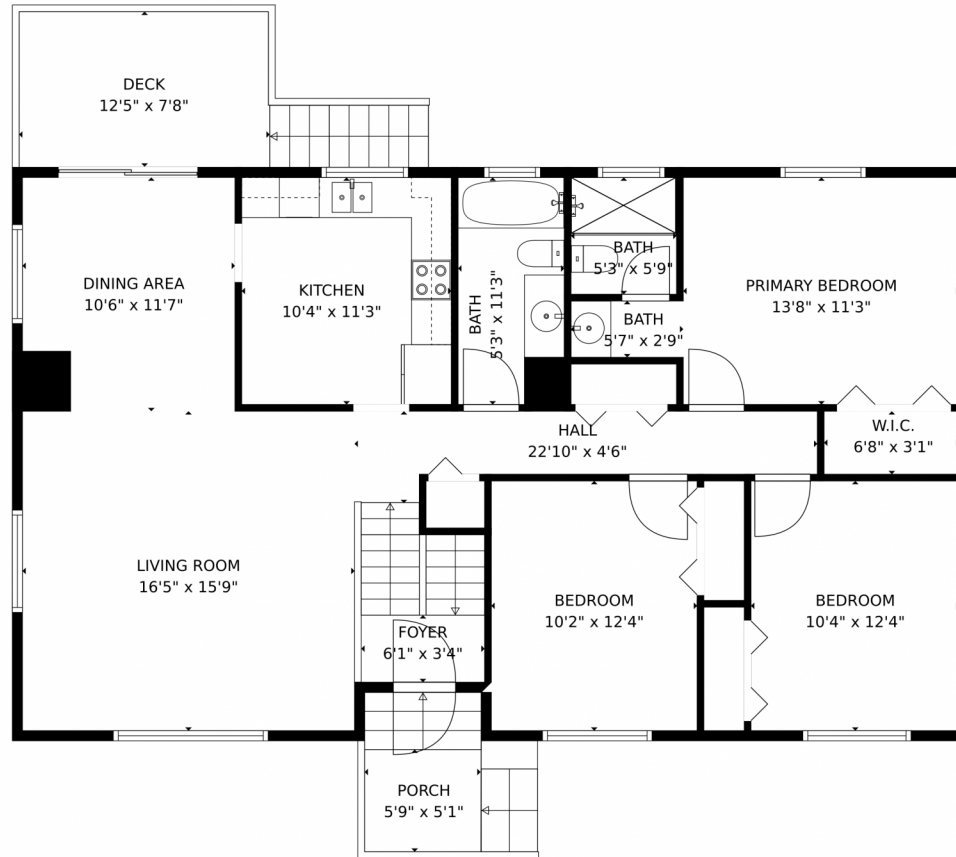
## PROPERTY DETAILS

Horse property on a third of an acre next door to Crestview Park and Arena in highly sought Golden. 3 bed, 3 bath, 2 car attached garage, RV parking, mountain views included in unincorporated Jefferson County. There is easy access to hiking, horseback riding, interstate 70, North Table Mountain, and jumping on highway 58 will take you right into downtown Golden and Clear Creek Canyon. Idyllic location in a quiet neighborhood and one many added bonuses - south facing so your shoveling in the winter will be a little easier. Great house ready for a make over.

**Mike Lawton**  
720-961-2969  
mikelawtonrealty@gmail.com  
<https://www.homesnap.com/Mike-Lawton>



# 5451 Kilmer Street, Golden, CO 80403 – Main Level



**TOTAL: 1912 sq. ft**  
FLOOR 1: 663 sq. ft, FLOOR 2: 0 sq. ft, FLOOR 3: 0 sq. ft, FLOOR 4: 1249 sq. ft  
EXCLUDED AREAS: GARAGE: 466 sq. ft, LOW CEILING: 13 sq. ft, PATIO: 404 sq. ft,  
ROOM: 361 sq. ft, DECK: 95 sq. ft, PORCH: 45 sq. ft  
MEASUREMENTS CALCULATED BY V1Photos.com ARE DEEMED HIGHLY RELIABLE BUT NOT GUARANTEED.



Disclaimer: Sizes and Dimensions are Approximate, Actual May Vary.

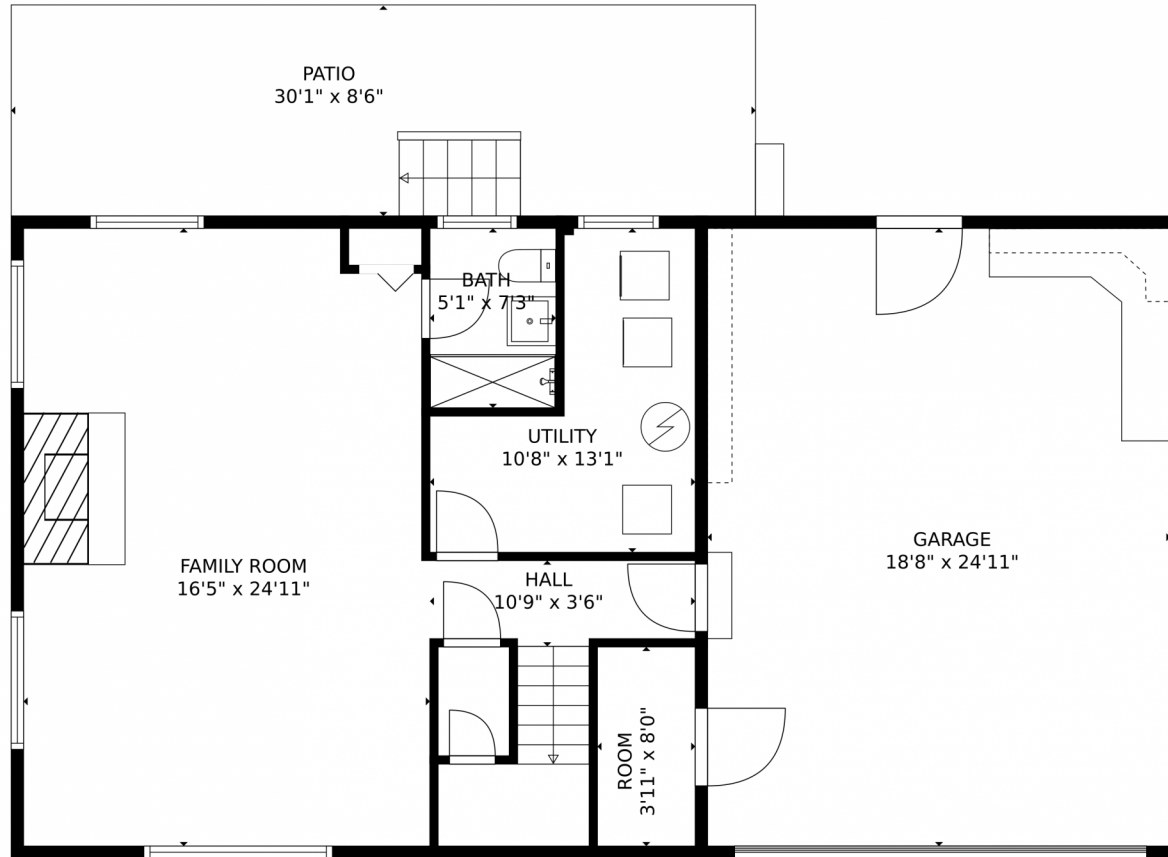
**Mike Lawton**  
720-961-2969  
mikelawtonrealty@gmail.com  
<https://www.homesnap.com/Mike-Lawton>



Scan code  
for more  
property  
details



# 5451 Kilmer Street, Golden, CO 80403 – Lower Level



**TOTAL: 1912 sq. ft**  
FLOOR 1: 663 sq. ft, FLOOR 2: 0 sq. ft, FLOOR 3: 0 sq. ft, FLOOR 4: 1249 sq. ft  
EXCLUDED AREAS: GARAGE: 466 sq. ft, LOW CEILING: 13 sq. ft, PATIO: 404 sq. ft,  
ROOM: 361 sq. ft, DECK: 95 sq. ft, PORCH: 45 sq. ft  
MEASUREMENTS CALCULATED BY V1Photos.com ARE DEEMED HIGHLY RELIABLE BUT NOT GUARANTEED.



Disclaimer: Sizes and Dimensions are Approximate, Actual May Vary.

**Mike Lawton**  
720-961-2969  
mikelawtonrealty@gmail.com  
<https://www.homesnap.com/Mike-Lawton>

