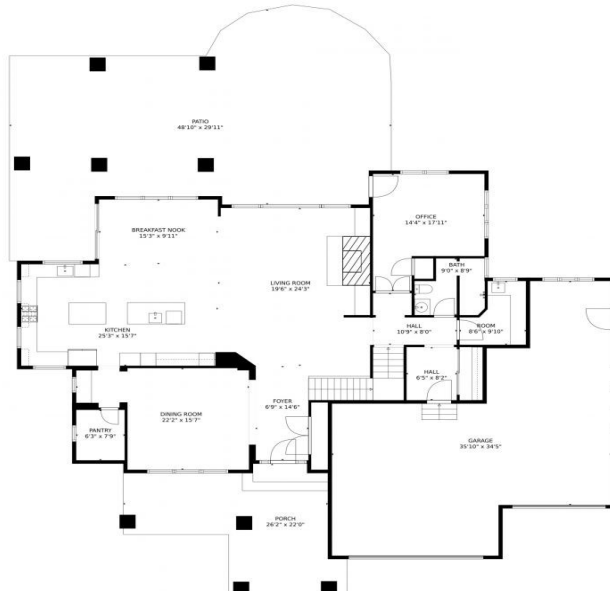


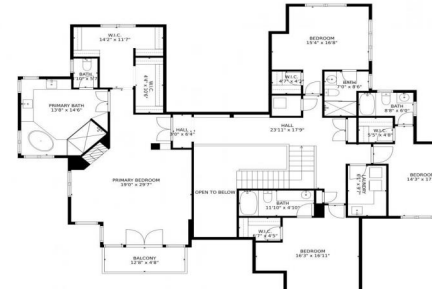


# 7357 Erin Court Longmont, CO 80503

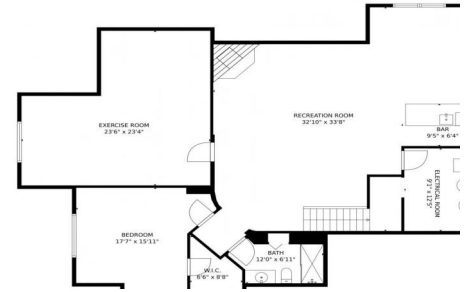
7357 Erin Court, Longmont, CO 80503 - Main Level



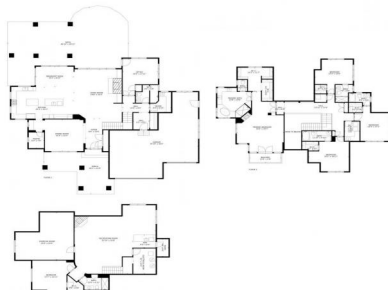
7357 Erin Court, Longmont, CO 80503 - Upper Level



7357 Erin Court, Longmont, CO 80503 - Lower Level



7357 Erin Court, Longmont, CO 80503 - All Levels



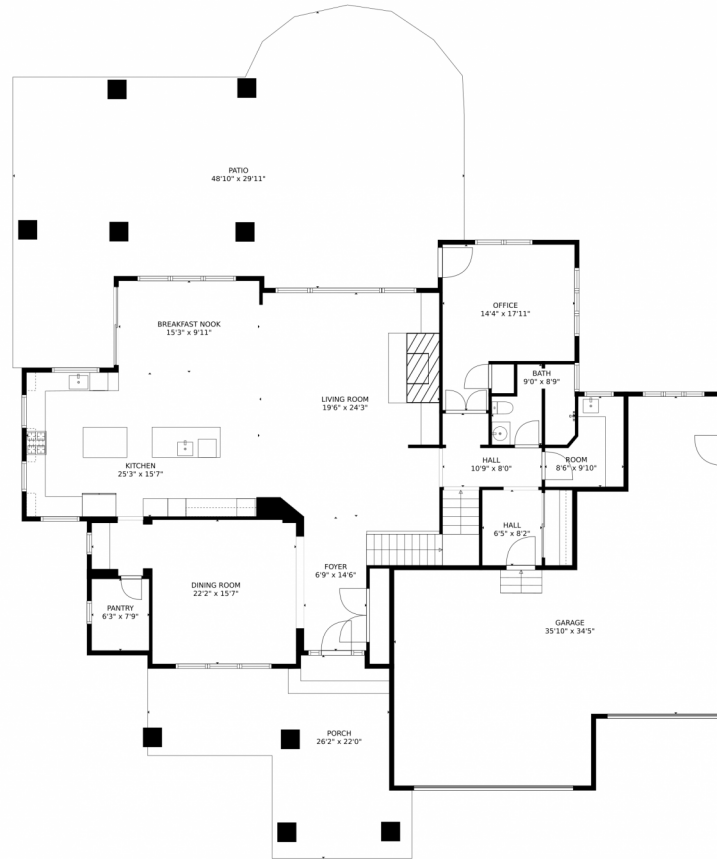
Single Family 7401 SQFT



**Mark Brigham**  
303-883-3947  
markb@boulderco.com



# 7357 Erin Court, Longmont, CO 80503 – Main Level



**TOTAL: 5888 sq. ft**  
Below Ground: 1769 sq. ft, FLOOR 2: 2096 sq. ft, FLOOR 3: 2023 sq. ft  
EXCLUDED AREAS: ELECTRICAL ROOM: 113 sq. ft, GARAGE: 967 sq. ft, PORCH: 416 sq. ft,  
PATIO: 1305 sq. ft, OPEN TO BELOW: 153 sq. ft, BALCONY: 59 sq. ft

MEASUREMENTS CALCULATED BY V1Photos.com ARE DEEMED HIGHLY RELIABLE BUT NOT GUARANTEED.



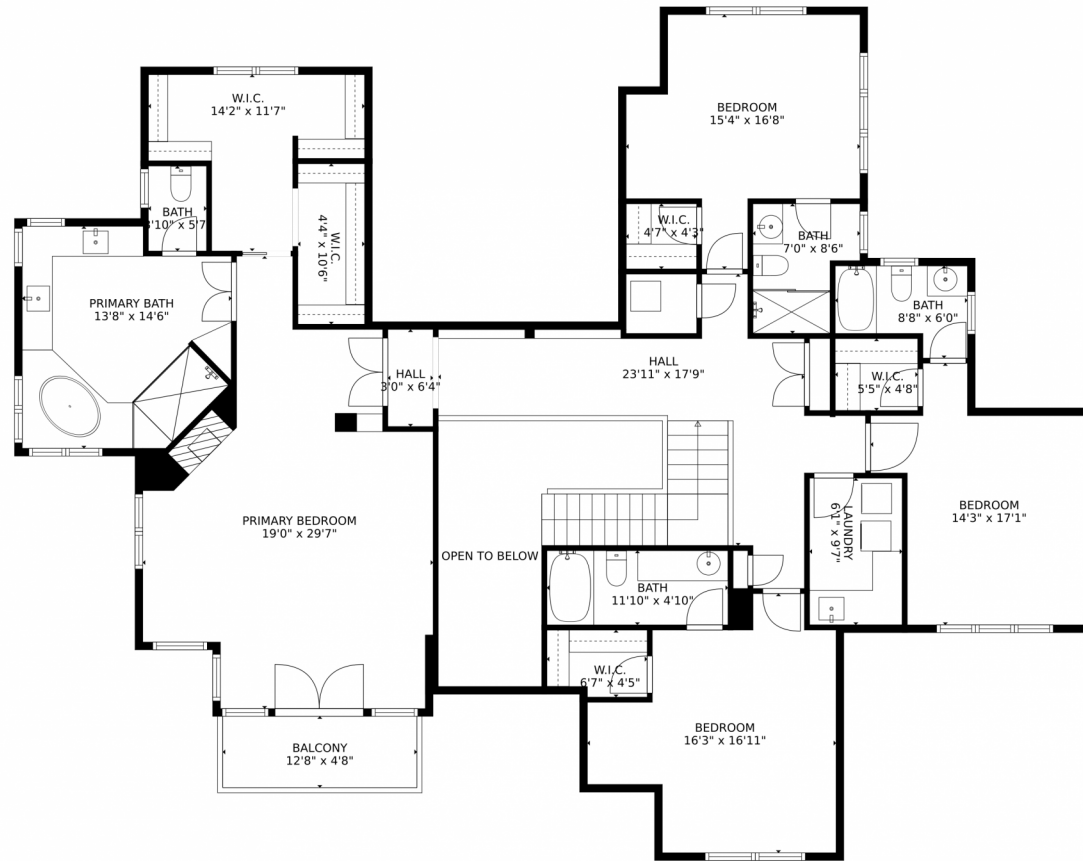
Disclaimer: Sizes and Dimensions are Approximate, Actual May Vary.



**Mark Brigham**  
303-883-3947  
markb@boulderco.com



# 7357 Erin Court, Longmont, CO 80503 – Upper Level



**TOTAL: 5888 sq. ft**  
Below Ground: 1769 sq. ft, FLOOR 2: 2096 sq. ft, FLOOR 3: 2023 sq. ft  
EXCLUDED AREAS: ELECTRICAL ROOM: 113 sq. ft, GARAGE: 967 sq. ft, PORCH: 416 sq. ft,  
PATIO: 1305 sq. ft, OPEN TO BELOW: 153 sq. ft, BALCONY: 59 sq. ft

MEASUREMENTS CALCULATED BY V1Photos.com ARE DEEMED HIGHLY RELIABLE BUT NOT GUARANTEED.



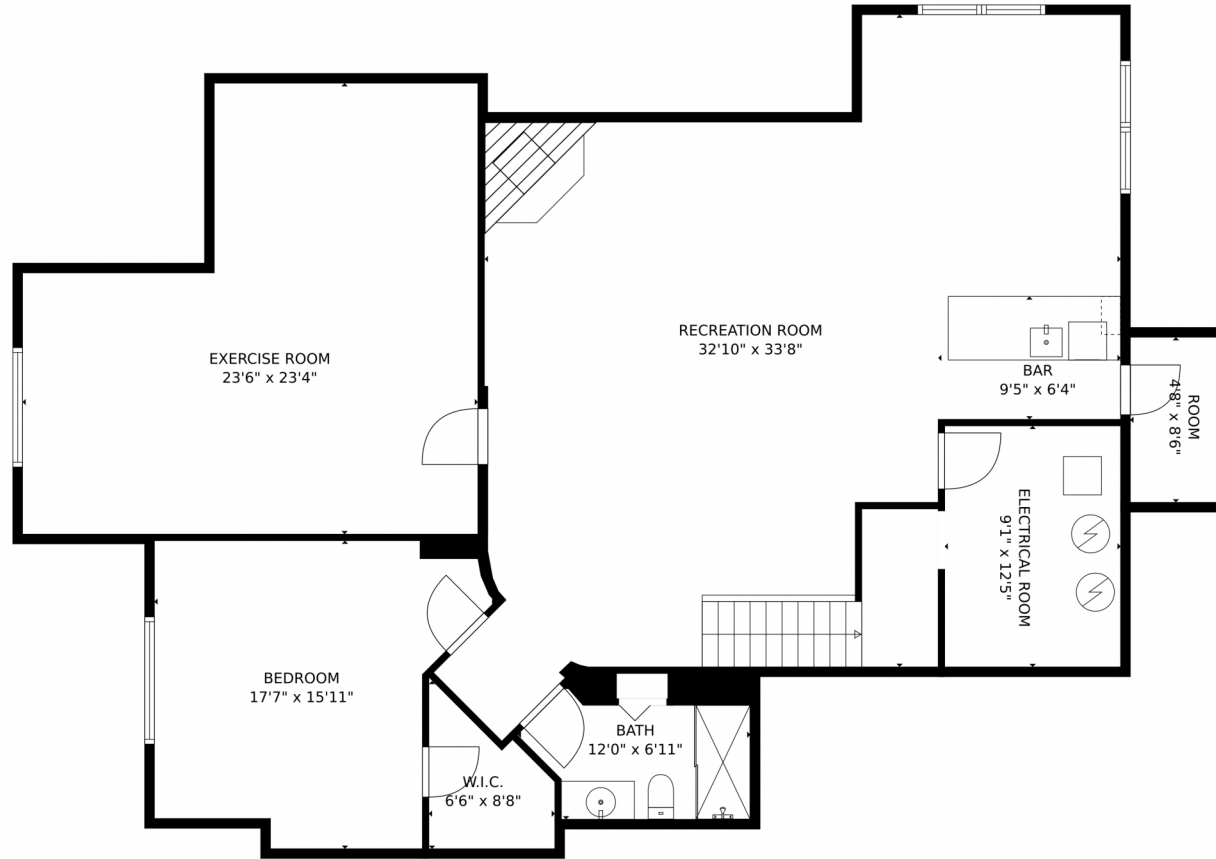
Disclaimer: Sizes and Dimensions are Approximate, Actual May Vary.



**Mark Brigham**  
303-883-3947  
markb@boulderco.com



# 7357 Erin Court, Longmont, CO 80503 – Lower Level



**TOTAL: 5888 sq. ft**  
Below Ground: 1769 sq. ft, FLOOR 2: 2096 sq. ft, FLOOR 3: 2023 sq. ft  
EXCLUDED AREAS: ELECTRICAL ROOM: 113 sq. ft, GARAGE: 967 sq. ft, PORCH: 416 sq. ft,  
PATIO: 1305 sq. ft, OPEN TO BELOW: 153 sq. ft, BALCONY: 59 sq. ft  
MEASUREMENTS CALCULATED BY V1Photos.com ARE DEEMED HIGHLY RELIABLE BUT NOT GUARANTEED.



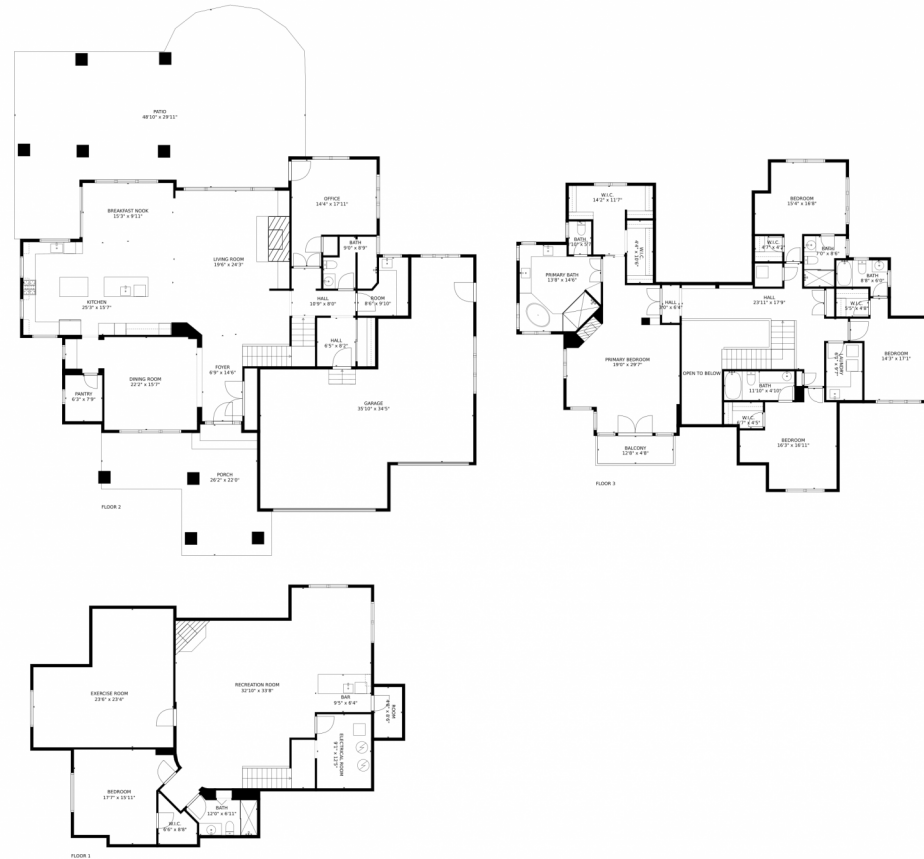
Disclaimer: Sizes and Dimensions are Approximate, Actual May Vary.



**Mark Brigham**  
303-883-3947  
markb@boulderco.com



# 7357 Erin Court, Longmont, CO 80503 – All Levels



**TOTAL: 5888 sq. ft**  
Below Ground: 1769 sq. ft, FLOOR 2: 2096 sq. ft, FLOOR 3: 2023 sq. ft  
EXCLUDED AREAS: ELECTRICAL ROOM: 113 sq. ft, GARAGE: 967 sq. ft, PORCH: 416 sq. ft,  
PATIO: 1305 sq. ft, OPEN TO BELOW: 153 sq. ft, BALCONY: 59 sq. ft

MEASUREMENTS CALCULATED BY V1Photos.com ARE DEEMED HIGHLY RELIABLE BUT NOT GUARANTEED.



Disclaimer: Sizes and Dimensions are Approximate, Actual May Vary.



**Mark Brigham**  
303-883-3947  
markb@boulderco.com

