



393 Harvest Point Drive  
Erie, CO 80516

PRICE \$675,000



Single Family



1562 SQFT



3 Beds



2 Baths



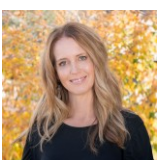
2 Car



0.24 Acre

## PROPERTY DETAILS

Stunning Ranch on a corner lot in Meadow Sweet Farm. Move-in ready with all the finishing touches. Impressive oak hardwood flooring throughout the main level. Updated kitchen with Oak cabinets, quartz counters, and S/S appliances. Separate dining area, large living room with soaring ceilings. Private covered patio. Sunroom with tile floors. Primary suite with hardwood floors and attached ADA bathroom. Two additional bedrooms with hardwood flooring. Main level laundry. Unfinished basement for storage. Attached 2 car garage. Xeriscape and grass outside. Backs to trail walkway. Close to schools and park.



**Terri Ellerington**

303-929-8116

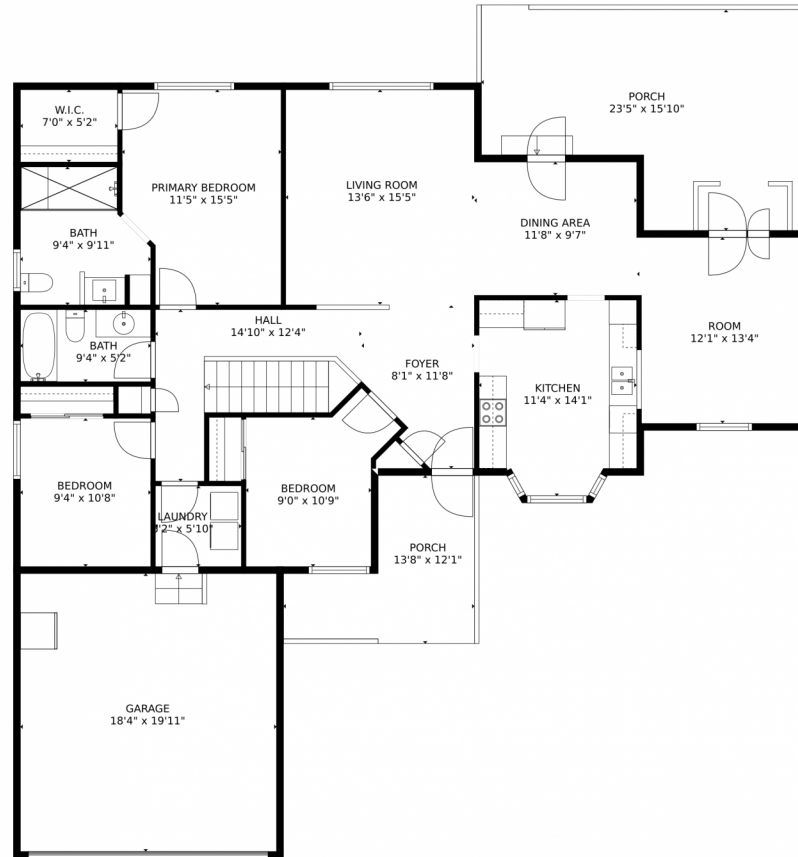
terri@elevated-team.com

<https://www.remax.com/real-estate-agents/terri-ellerington-louisville-co/10205130>

Scan code  
for more  
property  
details



# 393 Harvest Point Drive, Erie, CO 80516 – Main Level



**TOTAL: 1491 sq. ft**  
Below Ground: 0 sq. ft, FLOOR 2: 1491 sq. ft  
EXCLUDED AREAS: BASEMENT: 793 sq. ft, UNDEFINED: 16 sq. ft, GARAGE: 366 sq. ft,  
PORCH: 424 sq. ft

MEASUREMENTS CALCULATED BY V1Photos.com ARE DEEMED HIGHLY RELIABLE BUT NOT GUARANTEED.



Disclaimer: Sizes and Dimensions are Approximate, Actual May Vary.



**Terri Ellerington**

303-929-8116

terri@elevated-team.com

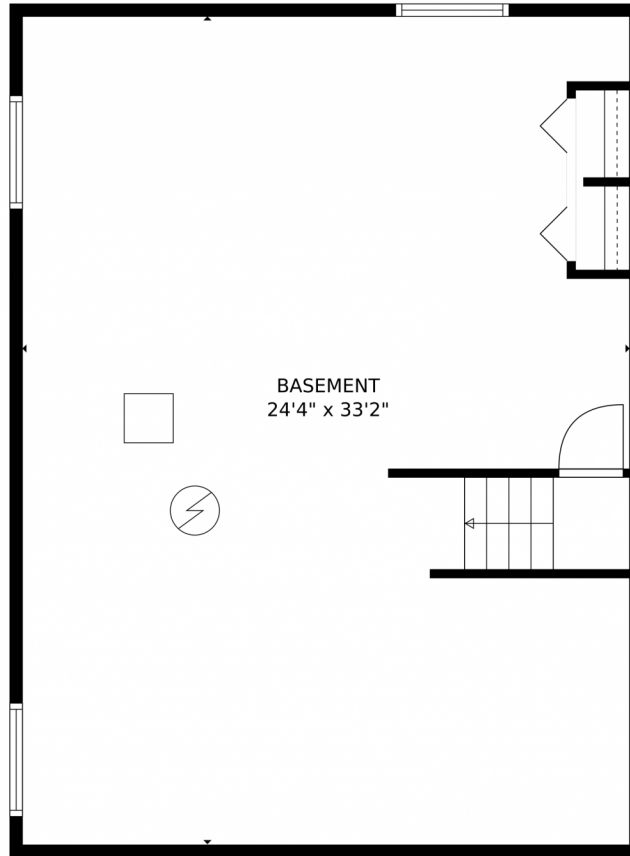
<https://www.remax.com/real-estate-agents/terri-ellerington-louisville-co/102051301>



Scan code  
for more  
property  
details



# 393 Harvest Point Drive, Erie, CO 80516 – Lower Level



**TOTAL: 1491 sq. ft**  
Below Ground: 0 sq. ft, FLOOR 2: 1491 sq. ft  
EXCLUDED AREAS: BASEMENT: 793 sq. ft, UNDEFINED: 16 sq. ft, GARAGE: 366 sq. ft,  
PORCH: 424 sq. ft

MEASUREMENTS CALCULATED BY V1Photos.com ARE DEEMED HIGHLY RELIABLE BUT NOT GUARANTEED.



Disclaimer: Sizes and Dimensions are Approximate, Actual May Vary.



**Terri Ellerington**

303-929-8116

terri@elevated-team.com

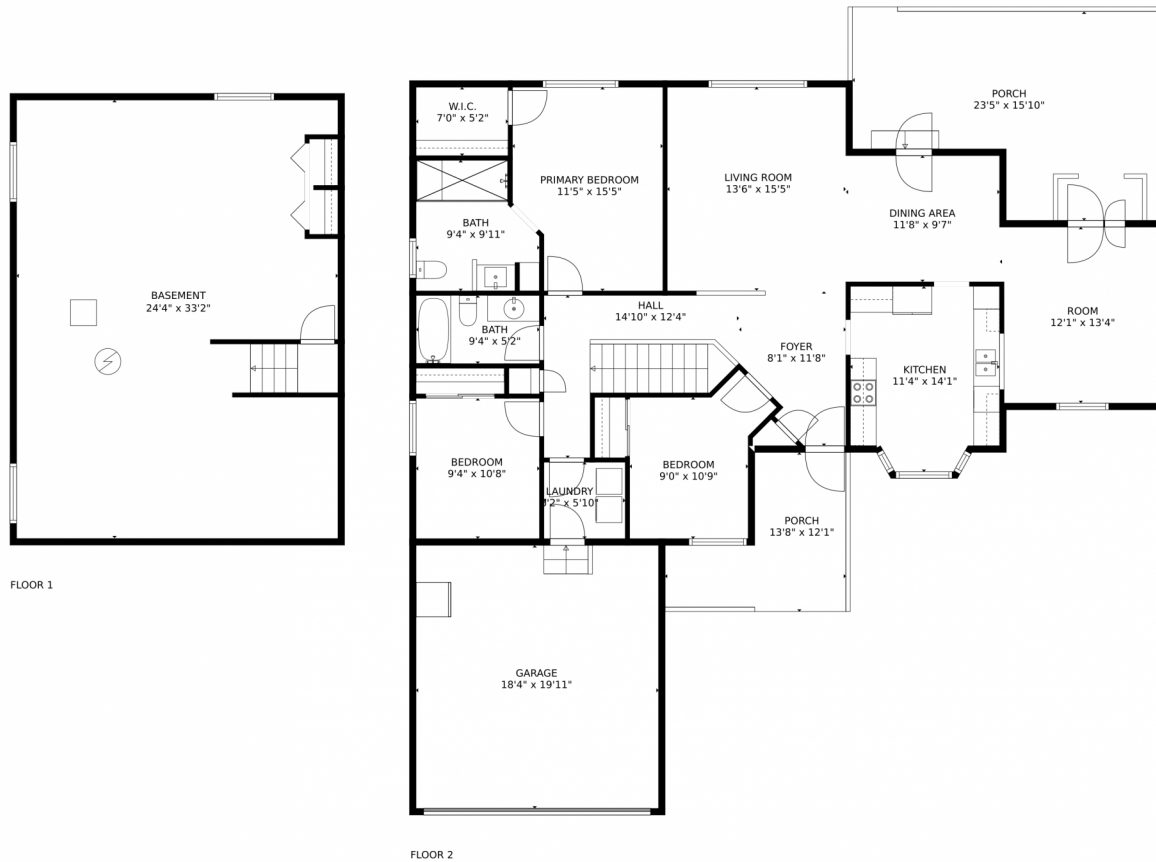
<https://www.remax.com/real-estate-agents/terri-ellerington-louisville-co/102051301>



Scan code  
for more  
property  
details



# 393 Harvest Point Drive, Erie, CO 80516 – All Levels



**TOTAL: 1491 sq. ft**  
Below Ground: 0 sq. ft, FLOOR 2: 1491 sq. ft  
EXCLUDED AREAS: BASEMENT: 793 sq. ft, UNDEFINED: 16 sq. ft, GARAGE: 366 sq. ft,  
PORCH: 424 sq. ft

MEASUREMENTS CALCULATED BY V1Photos.com ARE DEEMED HIGHLY RELIABLE BUT NOT GUARANTEED.



Disclaimer: Sizes and Dimensions are Approximate, Actual May Vary.



**Terri Ellerington**

303-929-8116

terri@elevated-team.com

<https://www.remax.com/real-estate-agents/terri-ellerington-louisville-co/102051301>



Scan code  
for more  
property  
details

