



8130 South Storm King Peak
 Littleton, CO 80127
 COMMUNITY: Ken Caryl



Single Family



2967 SQFT



4 Beds



3/1 Baths



2 Car



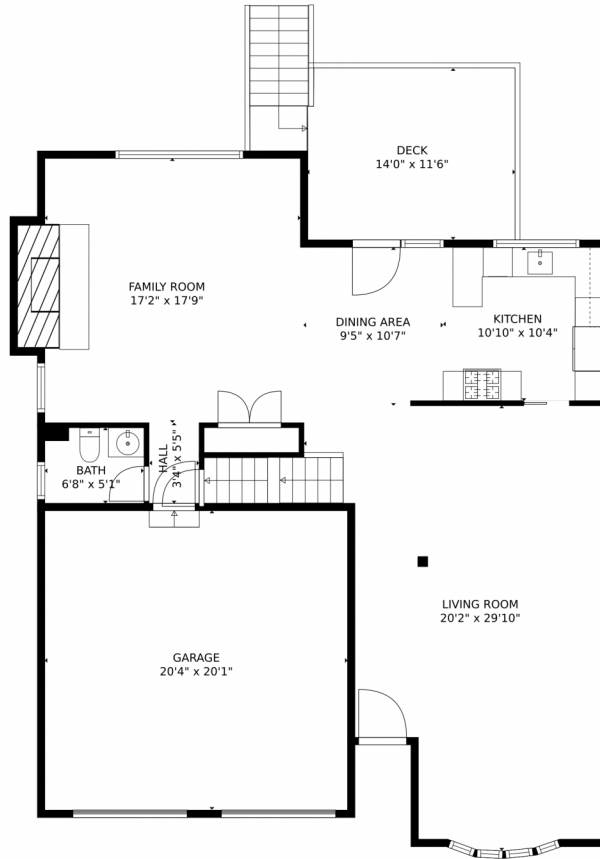
Cindy Rein
 720-272-4890
 cindy@reinrealty.net
<https://www.SherlockHomes.net>



Scan code
 for more
 property
 details



8130 South Storm King Peak, Littleton, CO 80127 – Main Level



TOTAL: 2633 sq. ft
Below Ground: 476 sq. ft, FLOOR 2: 1105 sq. ft, FLOOR 3: 1052 sq. ft
EXCLUDED AREAS: LAUNDRY: 175 sq. ft, ELECTRICAL ROOM: 42 sq. ft, DECK: 520 sq. ft,
GARAGE: 408 sq. ft, FIREPLACE: 11 sq. ft, OPEN TO BELOW: 407 sq. ft,
LOW CEILING: 26 sq. ft

MEASUREMENTS CALCULATED BY V1Photos.com ARE DEEMED HIGHLY RELIABLE BUT NOT GUARANTEED.



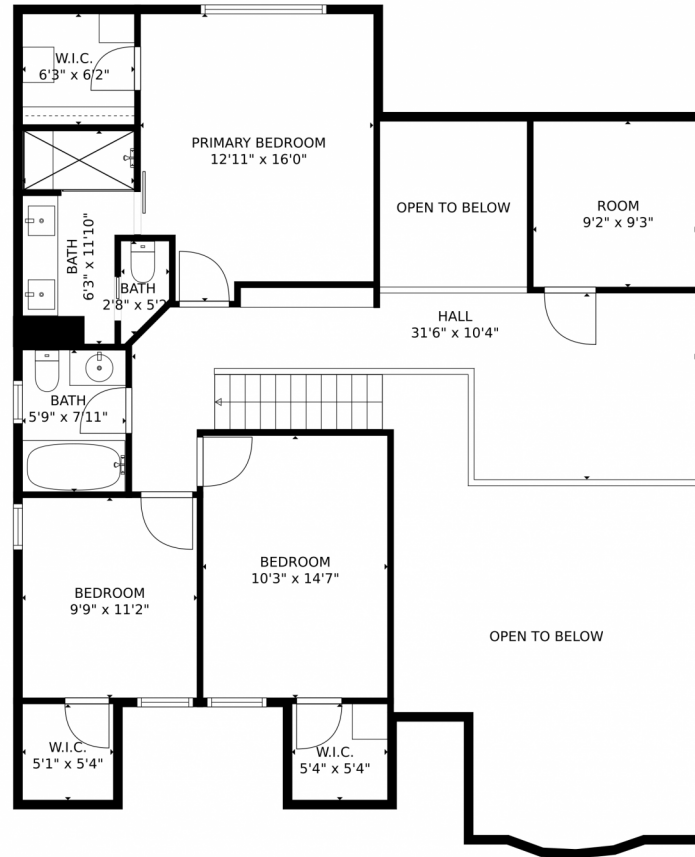
Disclaimer: Sizes and Dimensions are Approximate, Actual May Vary.



Cindy Rein
720-272-4890
cindy@reinrealty.net
<https://www.SherlockHomes.net>



8130 South Storm King Peak, Littleton, CO 80127 – Upper Level



TOTAL: 2633 sq. ft
Below Ground: 476 sq. ft, FLOOR 2: 1105 sq. ft, FLOOR 3: 1052 sq. ft
EXCLUDED AREAS: LAUNDRY: 175 sq. ft, ELECTRICAL ROOM: 42 sq. ft, DECK: 520 sq. ft,
GARAGE: 408 sq. ft, FIREPLACE: 11 sq. ft, OPEN TO BELOW: 407 sq. ft,
LOW CEILING: 26 sq. ft

MEASUREMENTS CALCULATED BY V1Photos.com ARE DEEMED HIGHLY RELIABLE BUT NOT GUARANTEED.



Disclaimer: Sizes and Dimensions are Approximate, Actual May Vary.



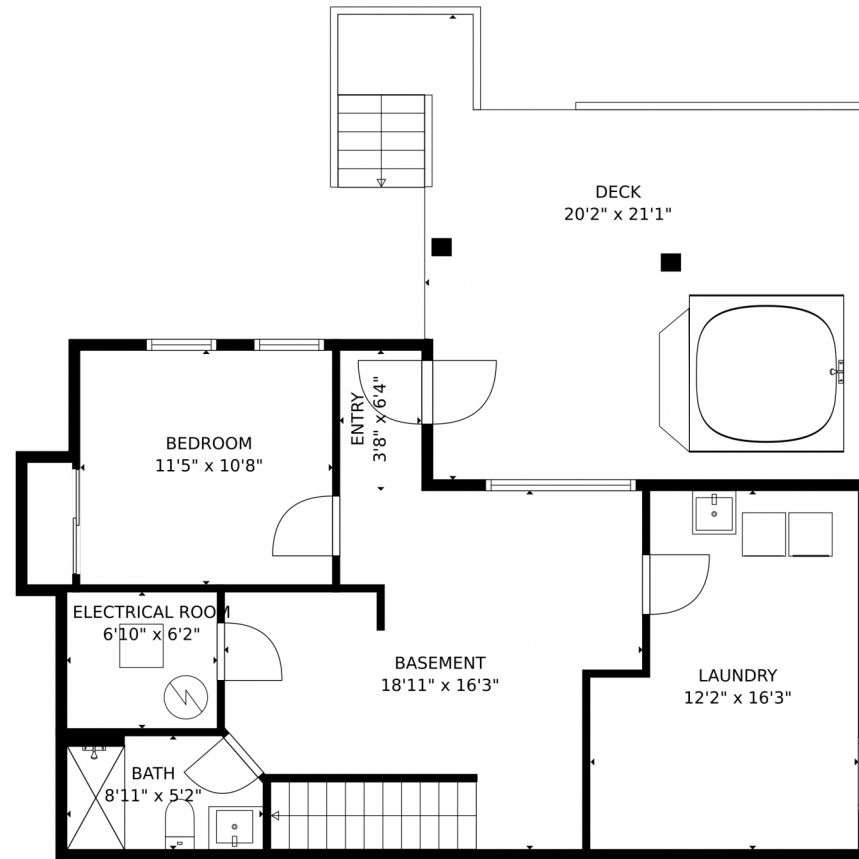
Cindy Rein
720-272-4890
cindy@reinrealty.net
<https://www.SherlockHomes.net>



Scan code
for more
property
details



8130 South Storm King Peak, Littleton, CO 80127 – Lower Level



TOTAL: 2633 sq. ft
Below Ground: 476 sq. ft, FLOOR 2: 1105 sq. ft, FLOOR 3: 1052 sq. ft
EXCLUDED AREAS: LAUNDRY: 175 sq. ft, ELECTRICAL ROOM: 42 sq. ft, DECK: 520 sq. ft,
GARAGE: 408 sq. ft, FIREPLACE: 11 sq. ft, OPEN TO BELOW: 407 sq. ft,
LOW CEILING: 26 sq. ft

MEASUREMENTS CALCULATED BY V1Photos.com ARE DEEMED HIGHLY RELIABLE BUT NOT GUARANTEED.

Disclaimer: Sizes and Dimensions are Approximate, Actual May Vary.



Cindy Rein
720-272-4890
cindy@reinrealty.net
<https://www.SherlockHomes.net>



8130 South Storm King Peak, Littleton, CO 80127 – All Levels



TOTAL: 2633 sq. ft
Below Ground: 476 sq. ft, FLOOR 2: 1105 sq. ft, FLOOR 3: 1052 sq. ft
EXCLUDED AREAS: LAUNDRY: 175 sq. ft, ELECTRICAL ROOM: 42 sq. ft, DECK: 520 sq. ft,
GARAGE: 408 sq. ft, FIREPLACE: 11 sq. ft, OPEN TO BELOW: 407 sq. ft,
LOW CEILING: 26 sq. ft

MEASUREMENTS CALCULATED BY V1Photos.com ARE DEEMED HIGHLY RELIABLE BUT NOT GUARANTEED.



Disclaimer: Sizes and Dimensions are Approximate, Actual May Vary.



Cindy Rein
720-272-4890
cindy@reinrealty.net
<https://www.SherlockHomes.net>

