

 Single Family
  1765 SQFT
  2 Beds
  2/1 Baths
  2 Car

PROPERTY DETAILS

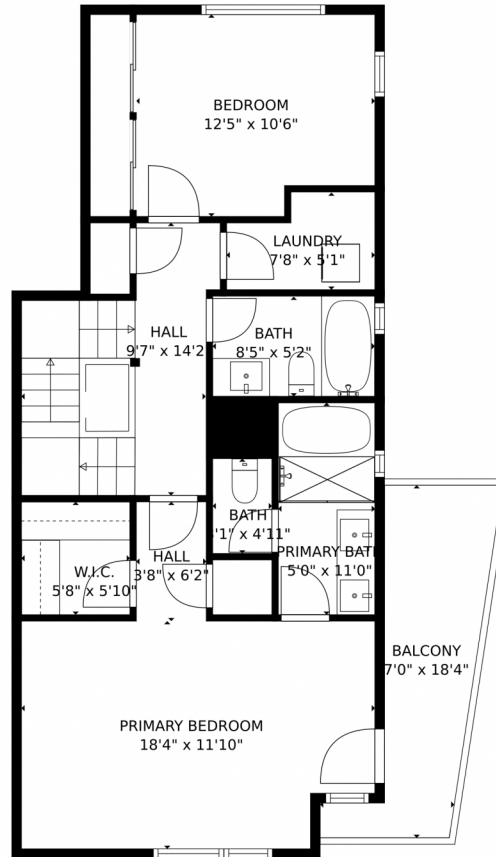
Welcome to this East Sloane Lake Gem! This home features an attached 2 car garage and a large private yard. Inside, you'll find a spacious entrance foyer with light tile floors and a stairway leading to the living room. The living room is beautifully designed with a stone fireplace and dark wood floors, creating a cozy and elegant atmosphere. The adjacent dining area is perfect for hosting meals with its large windows, fireplace, and notable chandelier. The kitchen is a chef's delight, equipped with high-end appliances, a large island, and stylish pendant lighting. The bedrooms are well-appointed with carpeted floors and ample natural light for a peaceful retreat. Outside, there is a rooftop deck with a pergola, offering a tranquil outdoor living space. Plus, there are decks on every level with city views. This property is located in a desirable community with easy access to amenities and attractions. Don't miss out on the opportunity to make this house your home. Contact us today to schedule a viewing!



Ryan Shaw
303-829-8438
ryanshawre@gmail.com



1807 Irving Street, Denver, CO 80204 – Level Three



TOTAL: 1488 sq. ft
FLOOR 1: 144 sq. ft, FLOOR 2: 528 sq. ft, Below Ground: 734 sq. ft, FLOOR 4: 82 sq. ft
EXCLUDED AREAS: PORCH: 26 sq. ft, PATIO: 354 sq. ft, GARAGE: 360 sq. ft,
BALCONY: 298 sq. ft, LOW CEILING: 206 sq. ft, ELECTRICAL ROOM: 38 sq. ft,
TERRACE: 384 sq. ft

MEASUREMENTS CALCULATED BY V1Photos.com ARE DEEMED HIGHLY RELIABLE BUT NOT GUARANTEED.



Disclaimer: Sizes and Dimensions are Approximate, Actual May Vary.



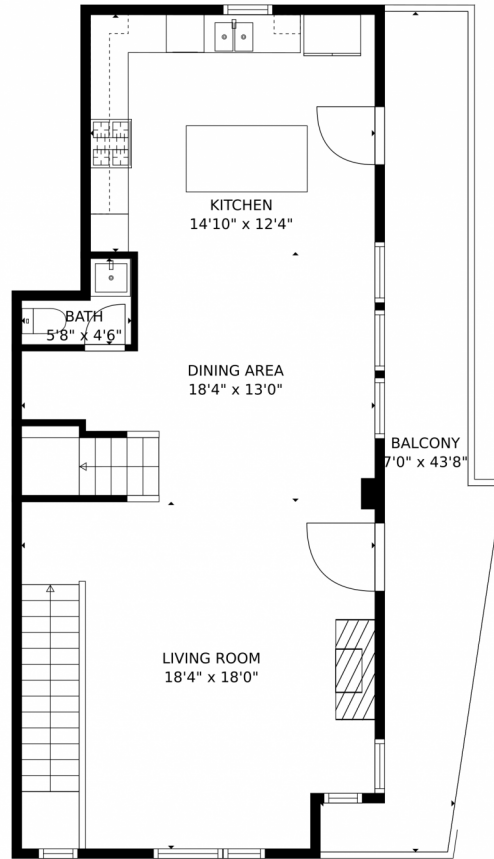
Ryan Shaw
303-829-8438
ryanshawre@gmail.com



Scan code
for more
property
details



1807 Irving Street, Denver, CO 80204 – Level Two



TOTAL: 1488 sq. ft
FLOOR 1: 144 sq. ft, FLOOR 2: 528 sq. ft, Below Ground: 734 sq. ft, FLOOR 4: 82 sq. ft
EXCLUDED AREAS: PORCH: 26 sq. ft, PATIO: 354 sq. ft, GARAGE: 360 sq. ft,
BALCONY: 298 sq. ft, LOW CEILING: 206 sq. ft, ELECTRICAL ROOM: 38 sq. ft,
TERRACE: 384 sq. ft

MEASUREMENTS CALCULATED BY V1Photos.com ARE DEEMED HIGHLY RELIABLE BUT NOT GUARANTEED.



Disclaimer: Sizes and Dimensions are Approximate, Actual May Vary.



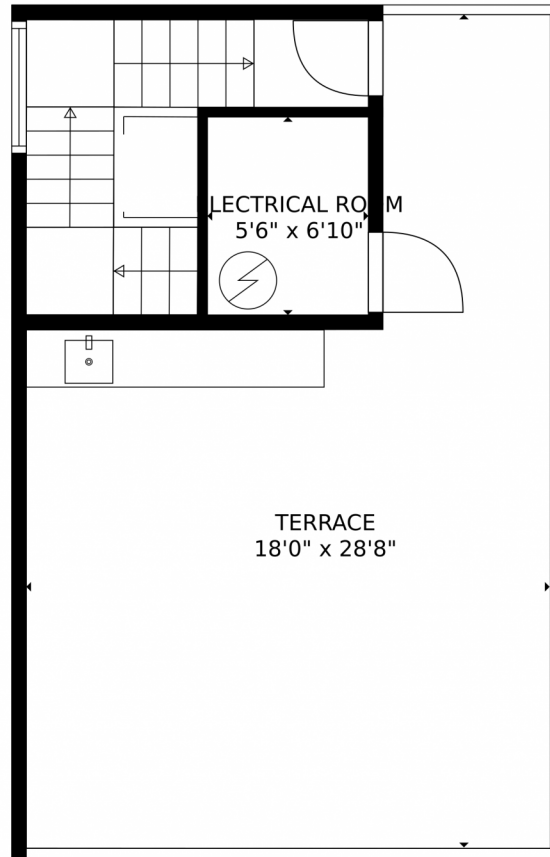
Ryan Shaw
303-829-8438
ryanshawre@gmail.com



Scan code
for more
property
details



1807 Irving Street, Denver, CO 80204 – Rooftop



TOTAL: 1488 sq. ft
FLOOR 1: 144 sq. ft, FLOOR 2: 528 sq. ft, Below Ground: 734 sq. ft, FLOOR 4: 82 sq. ft
EXCLUDED AREAS: PORCH: 26 sq. ft, PATIO: 354 sq. ft, GARAGE: 360 sq. ft,
BALCONY: 298 sq. ft, LOW CEILING: 206 sq. ft, ELECTRICAL ROOM: 38 sq. ft,
TERRACE: 384 sq. ft

MEASUREMENTS CALCULATED BY V1Photos.com ARE DEEMED HIGHLY RELIABLE BUT NOT GUARANTEED.



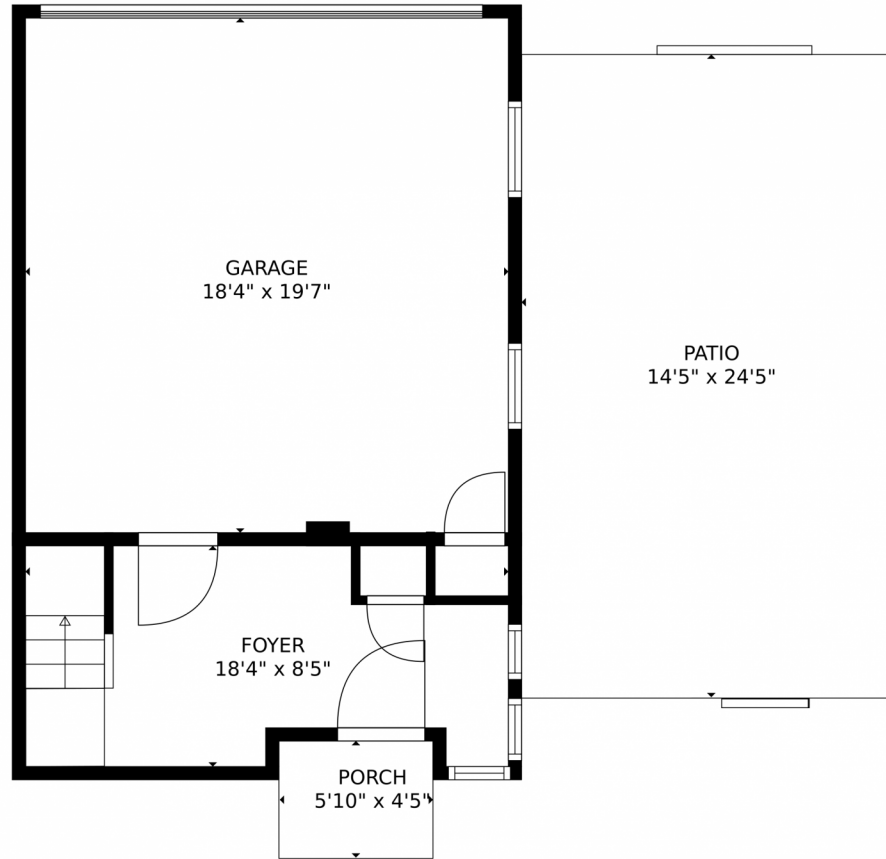
Disclaimer: Sizes and Dimensions are Approximate, Actual May Vary.



Ryan Shaw
303-829-8438
ryanshawre@gmail.com



1807 Irving Street, Denver, CO 80204 – Ground Level



TOTAL: 1488 sq. ft
FLOOR 1: 144 sq. ft, FLOOR 2: 528 sq. ft, Below Ground: 734 sq. ft, FLOOR 4: 82 sq. ft
EXCLUDED AREAS: PORCH: 26 sq. ft, PATIO: 354 sq. ft, GARAGE: 360 sq. ft,
BALCONY: 298 sq. ft, LOW CEILING: 206 sq. ft, ELECTRICAL ROOM: 38 sq. ft,
TERRACE: 384 sq. ft

MEASUREMENTS CALCULATED BY V1Photos.com ARE DEEMED HIGHLY RELIABLE BUT NOT GUARANTEED.



Disclaimer: Sizes and Dimensions are Approximate, Actual May Vary.



Ryan Shaw
303-829-8438
ryanshawre@gmail.com



1807 Irving Street, Denver, CO 80204 – All Levels



TOTAL: 1488 sq. ft
 FLOOR 1: 144 sq. ft, FLOOR 2: 528 sq. ft, Below Ground: 734 sq. ft, FLOOR 4: 82 sq. ft
 EXCLUDED AREAS: PORCH: 26 sq. ft, PATIO: 354 sq. ft, GARAGE: 360 sq. ft,
 BALCONY: 298 sq. ft, LOW CEILING: 206 sq. ft, ELECTRICAL ROOM: 38 sq. ft,
 TERRACE: 384 sq. ft

MEASUREMENTS CALCULATED BY V1Photos.COM ARE DEEMED HIGHLY RELIABLE BUT NOT GUARANTEED.



Disclaimer: Sizes and Dimensions are Approximate, Actual May Vary.



Ryan Shaw
 303-829-8438
 ryanshawre@gmail.com



Scan code
 for more
 property
 details

