



Single Family



4000 SQFT



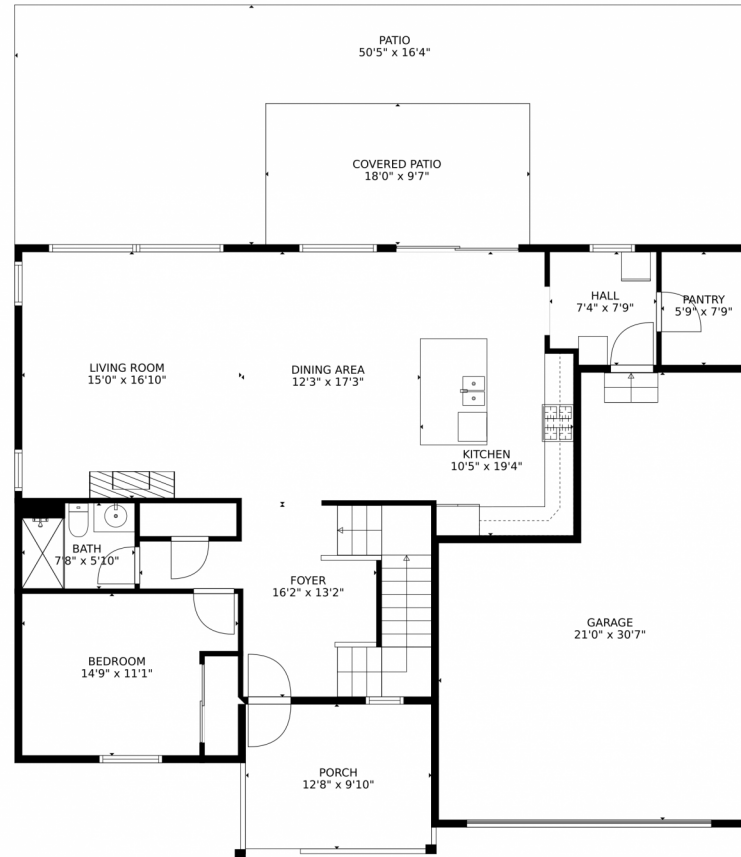
**Courtney Claytor**  
720-556-8013  
courtneyclaytorhome@gmail.com



Scan code  
for more  
property  
details



# 17980 Weymouth Avenue, Parker, CO 80134 – Main Level



**TOTAL: 3503 sq. ft**  
Below Ground: 848 sq. ft, FLOOR 2: 1187 sq. ft, FLOOR 3: 1468 sq. ft  
EXCLUDED AREAS: STORAGE: 296 sq. ft, GARAGE: 528 sq. ft, PORCH: 125 sq. ft,  
PATIO: 652 sq. ft, COVERED PATIO: 174 sq. ft, OPEN TO BELOW: 75 sq. ft  
MEASUREMENTS CALCULATED BY V1Photos.com ARE DEEMED HIGHLY RELIABLE BUT NOT GUARANTEED.

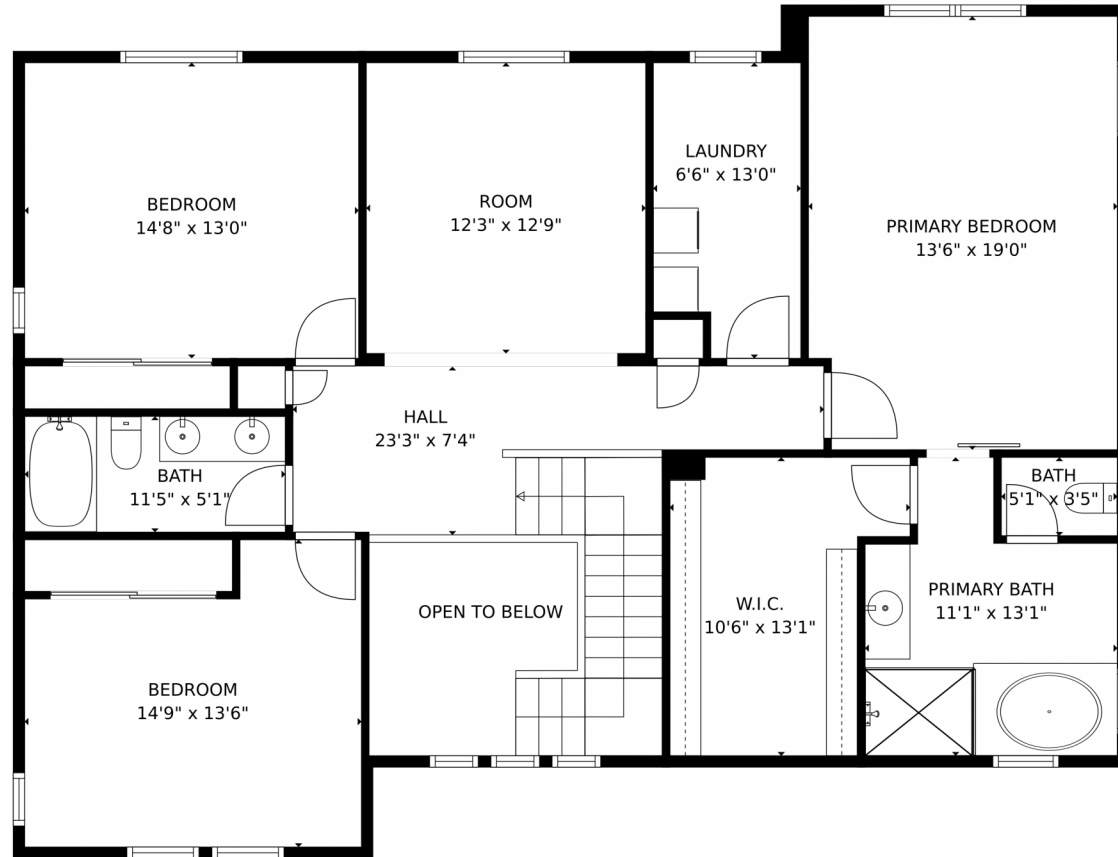
Disclaimer: Sizes and Dimensions are Approximate, Actual May Vary.



**Courtney Claytor**  
720-556-8013  
courtneyclaytorhome@gmail.com



# 17980 Weymouth Avenue, Parker, CO 80134 – Upper Level



**TOTAL: 3503 sq. ft**  
Below Ground: 848 sq. ft, FLOOR 2: 1187 sq. ft, FLOOR 3: 1468 sq. ft  
EXCLUDED AREAS: STORAGE: 296 sq. ft, GARAGE: 528 sq. ft, PORCH: 125 sq. ft,  
PATIO: 652 sq. ft, COVERED PATIO: 174 sq. ft, OPEN TO BELOW: 75 sq. ft  
MEASUREMENTS CALCULATED BY V1Photos.COM ARE DEEMED HIGHLY RELIABLE BUT NOT GUARANTEED.



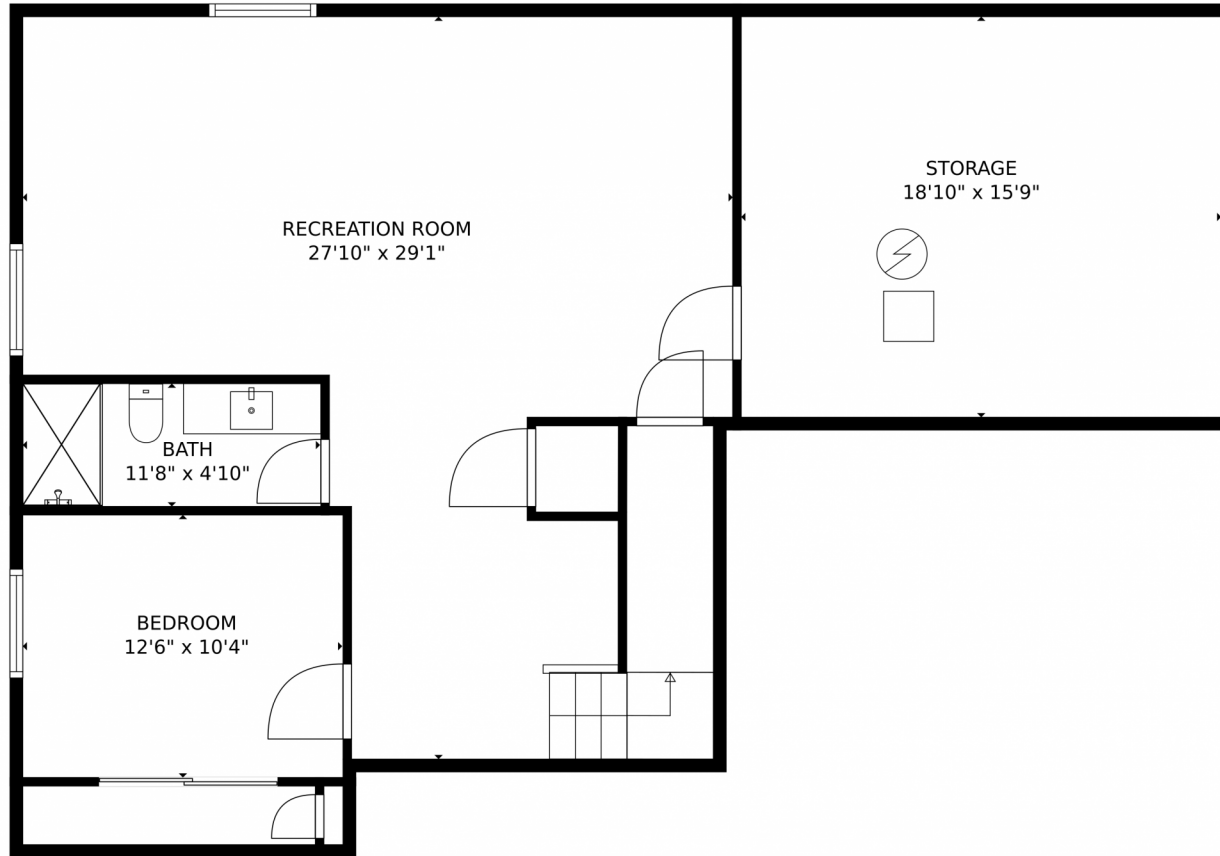
Disclaimer: Sizes and Dimensions are Approximate, Actual May Vary.



**Courtney Claytor**  
720-556-8013  
courtneyclaytorhome@gmail.com



17980 Weymouth Avenue, Parker, CO 80134 – Lower Level



**TOTAL: 3503 sq. ft**  
Below Ground: 848 sq. ft, FLOOR 2: 1187 sq. ft, FLOOR 3: 1468 sq. ft  
EXCLUDED AREAS: STORAGE: 296 sq. ft, GARAGE: 528 sq. ft, PORCH: 125 sq. ft,  
PATIO: 652 sq. ft, COVERED PATIO: 174 sq. ft, OPEN TO BELOW: 75 sq. ft  
MEASUREMENTS CALCULATED BY V1Photos.com ARE DEEMED HIGHLY RELIABLE BUT NOT GUARANTEED.



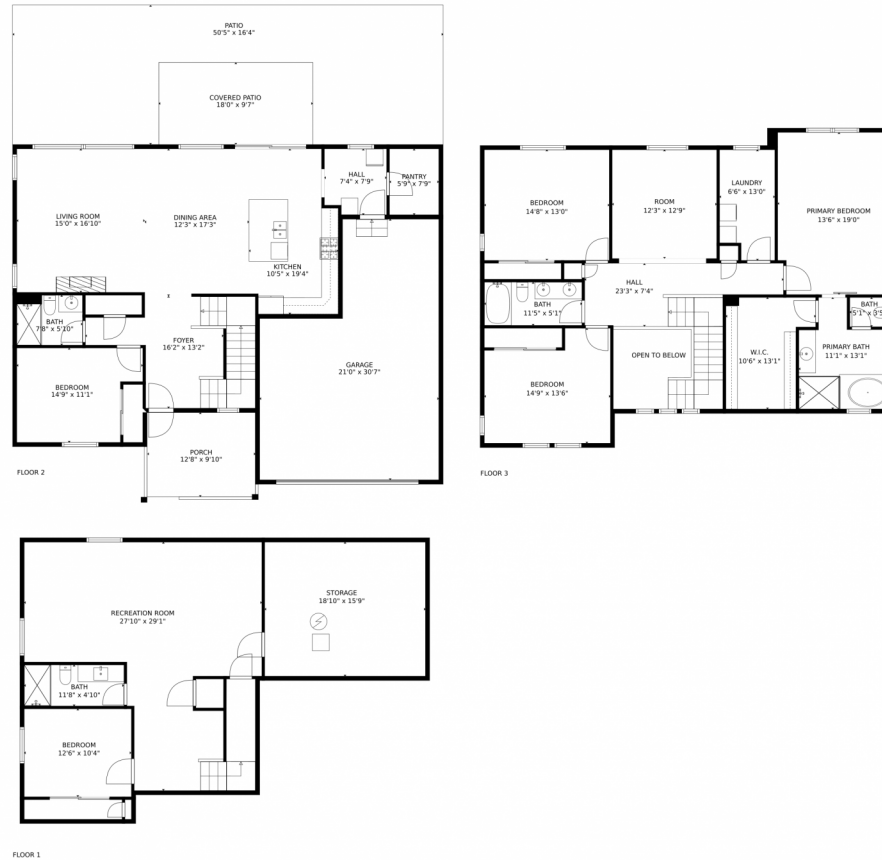
Disclaimer: Sizes and Dimensions are Approximate, Actual May Vary.



**Courtney Claytor**  
720-556-8013  
courtneyclaytorhome@gmail.com



# 17980 Weymouth Avenue, Parker, CO 80134 – All Levels



**TOTAL: 3503 sq. ft**

Below Ground: 848 sq. ft, FLOOR 2: 1187 sq. ft, FLOOR 3: 1468 sq. ft  
EXCLUDED AREAS: STORAGE: 296 sq. ft, GARAGE: 528 sq. ft, PORCH: 125 sq. ft,  
PATIO: 652 sq. ft, COVERED PATIO: 174 sq. ft, OPEN TO BELOW: 75 sq. ft

MEASUREMENTS CALCULATED BY V1Photos.com ARE DEEMED HIGHLY RELIABLE BUT NOT GUARANTEED.



Disclaimer: Sizes and Dimensions are Approximate, Actual May Vary.



**Courtney Claytor**  
720-556-8013  
courtneyclaytorhome@gmail.com



Scan code  
for more  
property  
details

