



842 S Carriage Drive  
 Milliken, CO 80543  
**COMMUNITY:** Settlers Village

**MLS #** IR1009940  
**PRICE** \$499,000



Single Family



2471 SQFT



4 Beds



3/1 Baths



2 Car



0.22 Acre

## PROPERTY DETAILS

Move-in ready home with no metro district tax and a quiet location. Professionally remodeled with a modern living area, farmhouse sink, stainless appliances, and island with breakfast bar. Main floor laundry, primary bedroom with walk-in closet, and additional bedrooms and bath upstairs. Fully finished basement with electric fireplace, bar, and extra bedroom and bath. Extra large, fully-fenced backyard with custom deck, landscaping, hot tub, fire pit, and storage shed. Upgraded lighting and owned solar. Come see this wonderful home and make it your own!

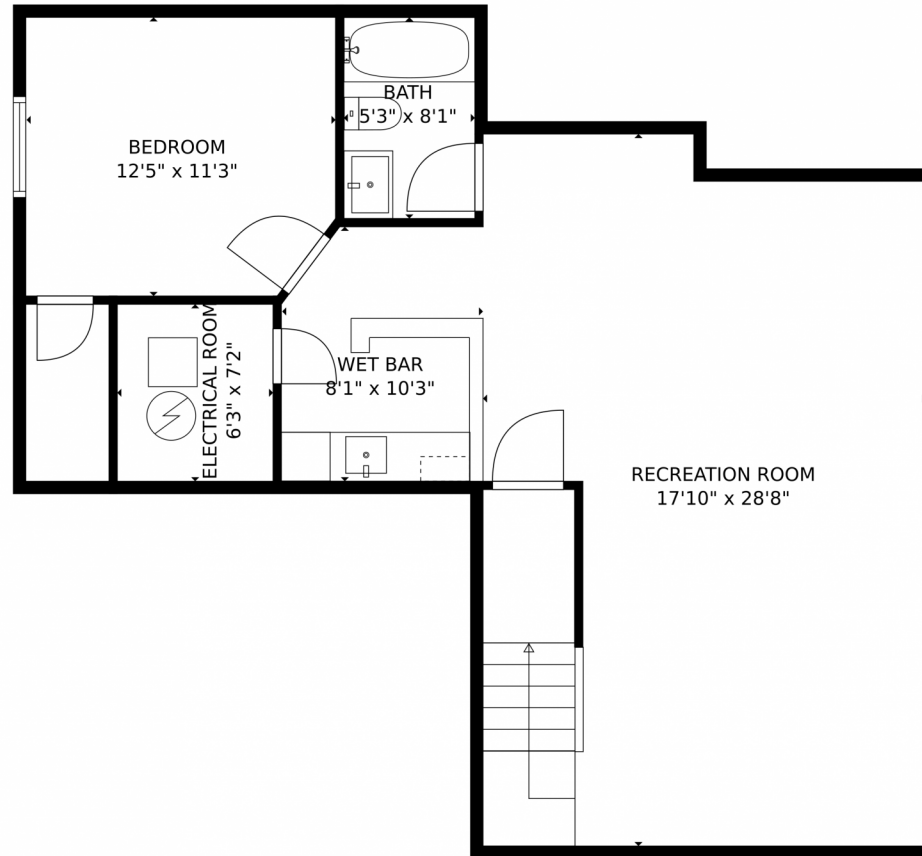


**Robin Glasener**  
 720-352-7376  
 rglasener@remax.net  
<https://rglasener.remax.com/>



Scan code  
 for more  
 property  
 details





**TOTAL: 2243 sq. ft**  
Below Ground: 793 sq. ft, FLOOR 2: 943 sq. ft, FLOOR 3: 507 sq. ft  
EXCLUDED AREAS: ELECTRICAL ROOM: 45 sq. ft, GARAGE: 383 sq. ft, PORCH: 106 sq. ft,  
DECK: 466 sq. ft

MEASUREMENTS CALCULATED BY V1Photos.com ARE DEEMED HIGHLY RELIABLE BUT NOT GUARANTEED.



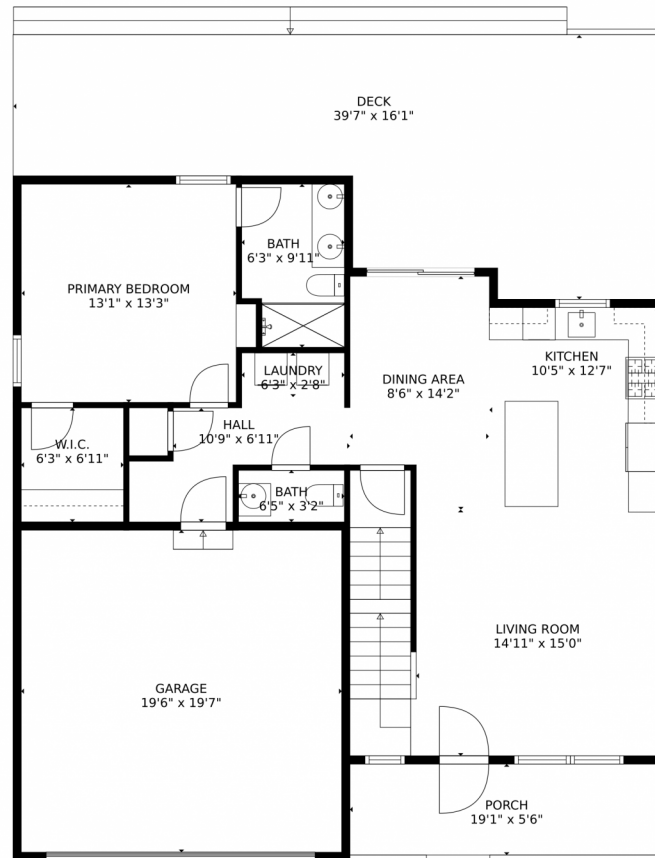
Disclaimer: Sizes and Dimensions are Approximate, Actual May Vary.



**Robin Glasener**  
720-352-7376  
rglasener@remax.net  
<https://rglasener.remax.com/>



Scan code  
for more  
property  
details



**TOTAL: 2243 sq. ft**  
Below Ground: 793 sq. ft, FLOOR 2: 943 sq. ft, FLOOR 3: 507 sq. ft  
EXCLUDED AREAS: ELECTRICAL ROOM: 45 sq. ft, GARAGE: 383 sq. ft, PORCH: 106 sq. ft,  
DECK: 466 sq. ft

MEASUREMENTS CALCULATED BY V1Photos.COM ARE DEEMED HIGHLY RELIABLE BUT NOT GUARANTEED.



Disclaimer: Sizes and Dimensions are Approximate, Actual May Vary.



**Robin Glasener**  
720-352-7376  
rglasener@remax.net  
<https://rglasener.remax.com/>





**TOTAL: 2243 sq. ft**  
Below Ground: 793 sq. ft, FLOOR 2: 943 sq. ft, FLOOR 3: 507 sq. ft  
EXCLUDED AREAS: ELECTRICAL ROOM: 45 sq. ft, GARAGE: 383 sq. ft, PORCH: 106 sq. ft,  
DECK: 466 sq. ft

MEASUREMENTS CALCULATED BY V1Photos.com ARE DEEMED HIGHLY RELIABLE BUT NOT GUARANTEED.



Disclaimer: Sizes and Dimensions are Approximate, Actual May Vary.



**Robin Glasener**  
720-352-7376  
rglasener@remax.net  
<https://rglasener.remax.com/>





**TOTAL: 2243 sq. ft**  
Below Ground: 793 sq. ft, FLOOR 2: 943 sq. ft, FLOOR 3: 507 sq. ft  
EXCLUDED AREAS: ELECTRICAL ROOM: 45 sq. ft, GARAGE: 383 sq. ft, PORCH: 106 sq. ft,  
DECK: 466 sq. ft

MEASUREMENTS CALCULATED BY V1Photos.com ARE DEEMED HIGHLY RELIABLE BUT NOT GUARANTEED.



Disclaimer: Sizes and Dimensions are Approximate, Actual May Vary.



**Robin Glasener**  
720-352-7376  
rglasener@remax.net  
<https://rglasener.remax.com/>



Scan code  
for more  
property  
details

