



Single Family



2028 SQFT



3 Beds



3/1 Baths



2 Car



Jordan Kermes

952-956-2958

jkermes@wedgewoodhomesrealty.com

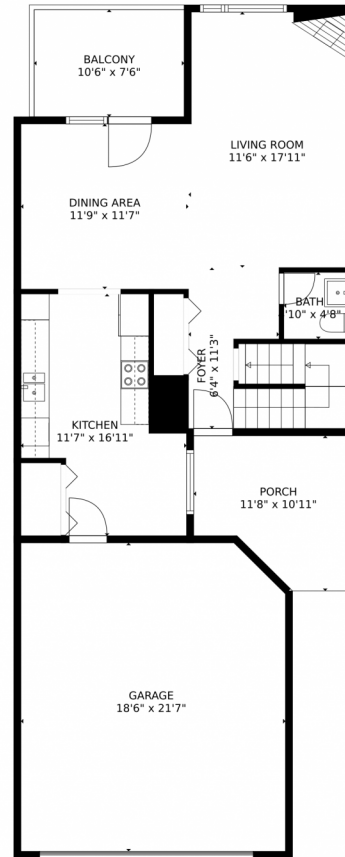
<https://colorado.wedgewoodhomesrealty.com>



Scan code
for more
property
details



3412 Trenary Lane, Colorado Springs, CO 80918 – Main



TOTAL: 1876 sq. ft
Below Ground: 530 sq. ft, FLOOR 2: 673 sq. ft, FLOOR 3: 673 sq. ft
EXCLUDED AREAS: ELECTRICAL ROOM: 57 sq. ft, COVERED PATIO: 87 sq. ft, GARAGE: 394 sq. ft,
PORCH: 108 sq. ft, BALCONY: 158 sq. ft

MEASUREMENTS CALCULATED BY V1Photos.com ARE DEEMED HIGHLY RELIABLE BUT NOT GUARANTEED.



Disclaimer: Sizes and Dimensions are Approximate, Actual May Vary.



Jordan Kermes

952-956-2958

jkermes@wedgewoodhomesrealty.com

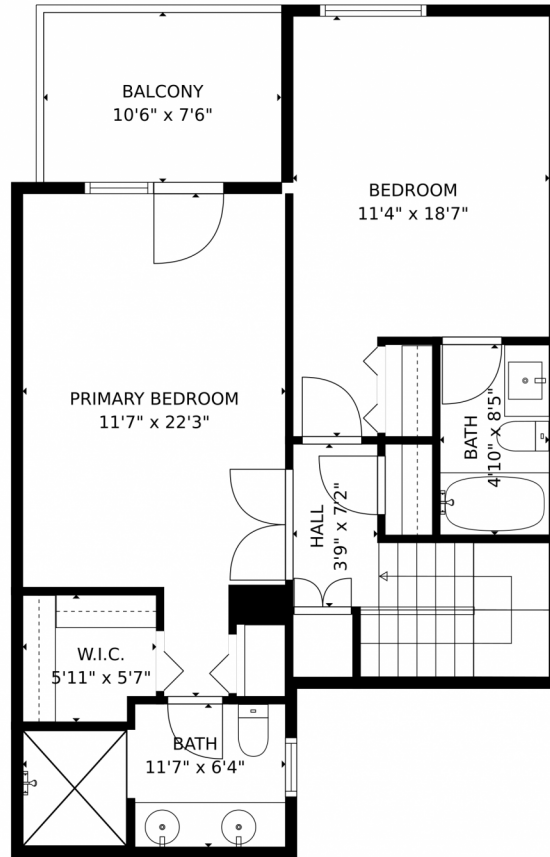
<https://colorado.wedgewoodhomesrealty.com>



Scan code
for more
property
details



3412 Trenary Lane, Colorado Springs, CO 80918 – 2nd level



TOTAL: 1876 sq. ft
Below Ground: 530 sq. ft, FLOOR 2: 673 sq. ft, FLOOR 3: 673 sq. ft
EXCLUDED AREAS: ELECTRICAL ROOM: 57 sq. ft, COVERED PATIO: 87 sq. ft, GARAGE: 394 sq. ft,
PORCH: 108 sq. ft, BALCONY: 158 sq. ft

MEASUREMENTS CALCULATED BY V1Photos.com ARE DEEMED HIGHLY RELIABLE BUT NOT GUARANTEED.



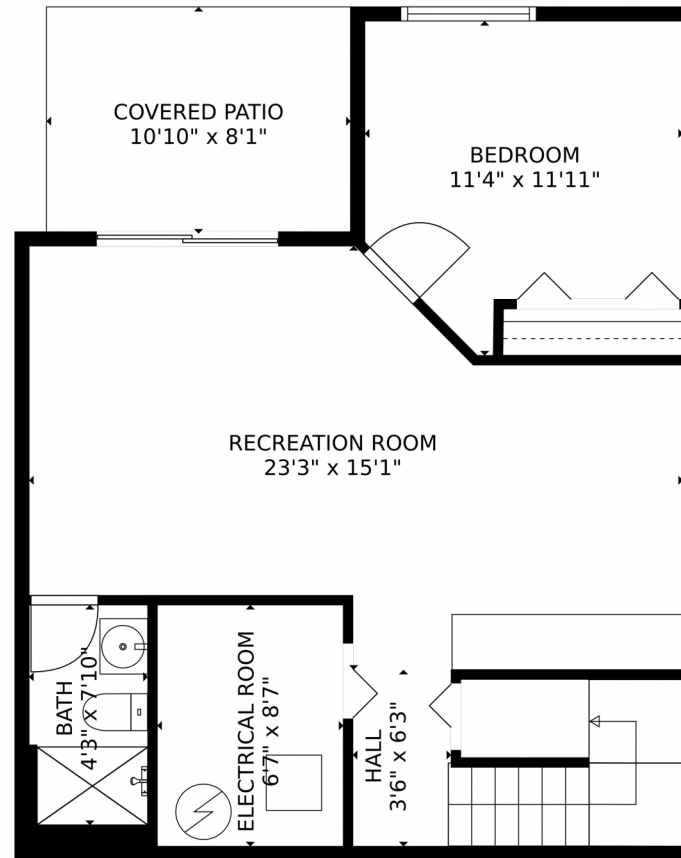
Disclaimer: Sizes and Dimensions are Approximate, Actual May Vary.



Jordan Kermes
952-956-2958
jkermes@wedgewoodhomesrealty.com
<https://colorado.wedgewoodhomesrealty.com>



3412 Trenary Lane, Colorado Springs, CO 80918 – Lower Level



TOTAL: 1876 sq. ft
Below Ground: 530 sq. ft, FLOOR 2: 673 sq. ft, FLOOR 3: 673 sq. ft
EXCLUDED AREAS: ELECTRICAL ROOM: 57 sq. ft, COVERED PATIO: 87 sq. ft, GARAGE: 394 sq. ft,
PORCH: 108 sq. ft, BALCONY: 158 sq. ft

MEASUREMENTS CALCULATED BY V1Photos.com ARE DEEMED HIGHLY RELIABLE BUT NOT GUARANTEED.



Disclaimer: Sizes and Dimensions are Approximate, Actual May Vary.



Jordan Kermes

952-956-2958

jkermes@wedgewoodhomesrealty.com

<https://colorado.wedgewoodhomesrealty.com>



Scan code
for more
property
details



3412 Trenary Lane, Colorado Springs, CO 80918 – All Levels



TOTAL: 1876 sq. ft

Below Ground: 530 sq. ft, FLOOR 2: 673 sq. ft, FLOOR 3: 673 sq. ft
EXCLUDED AREAS: ELECTRICAL ROOM: 57 sq. ft, COVERED PATIO: 87 sq. ft, GARAGE: 394 sq. ft,
PORCH: 108 sq. ft, BALCONY: 158 sq. ft

MEASUREMENTS CALCULATED BY V1Photos.com ARE DEEMED HIGHLY RELIABLE BUT NOT GUARANTEED.



Disclaimer: Sizes and Dimensions are Approximate, Actual May Vary.



Jordan Kermes

952-956-2958

jkermes@wedgewoodhomesrealty.com

<https://colorado.wedgewoodhomesrealty.com>



Scan code
for more
property
details

