

4415 South Delaware Street
Englewood, CO 80110



Single Family



1300 SQFT



3 Beds



2/1 Baths



1 Car



0.15 Acre



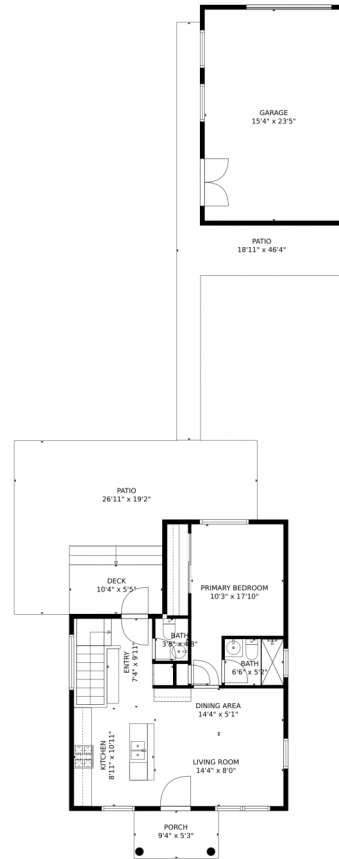
Douglas Clark
303-517-7155
dclark@dencorellc.com



Scan code
for more
property
details



4415 South Delaware Street, Englewood, CO 80110 – Main Level



TOTAL: 1209 sq. ft
Below Ground: 590 sq. ft, FLOOR 2: 619 sq. ft
EXCLUDED AREAS: GARAGE: 360 sq. ft, DECK: 56 sq. ft, PATIO: 564 sq. ft,
PORCH: 50 sq. ft

MEASUREMENTS CALCULATED BY V1Photos.com ARE DEEMED HIGHLY RELIABLE BUT NOT GUARANTEED.



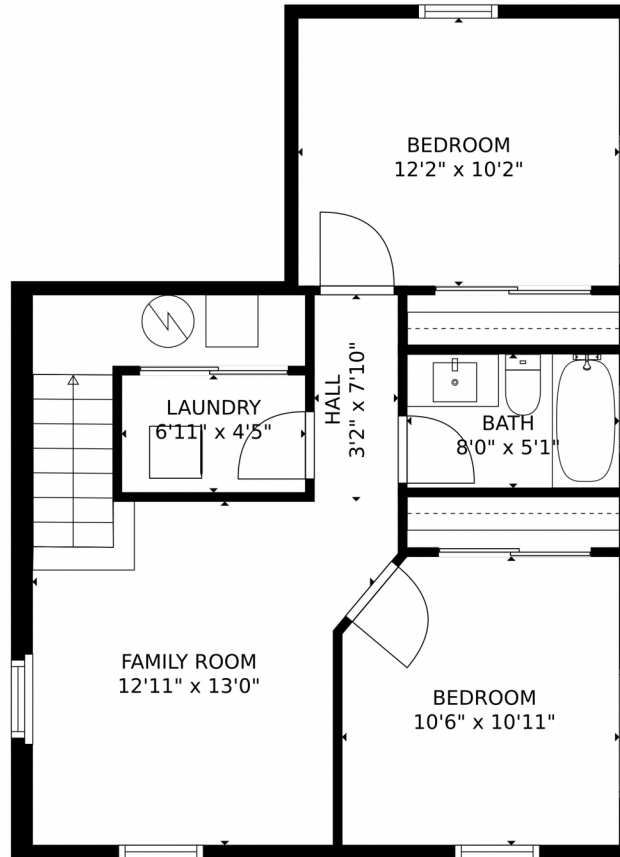
Disclaimer: Sizes and Dimensions are Approximate, Actual May Vary.



Douglas Clark
303-517-7155
dclark@dencorellc.com



4415 South Delaware Street, Englewood, CO 80110 – Basement



TOTAL: 1209 sq. ft
Below Ground: 590 sq. ft, FLOOR 2: 619 sq. ft
EXCLUDED AREAS: GARAGE: 360 sq. ft, DECK: 56 sq. ft, PATIO: 564 sq. ft,
PORCH: 50 sq. ft
MEASUREMENTS CALCULATED BY V1Photos.com ARE DEEMED HIGHLY RELIABLE BUT NOT GUARANTEED.



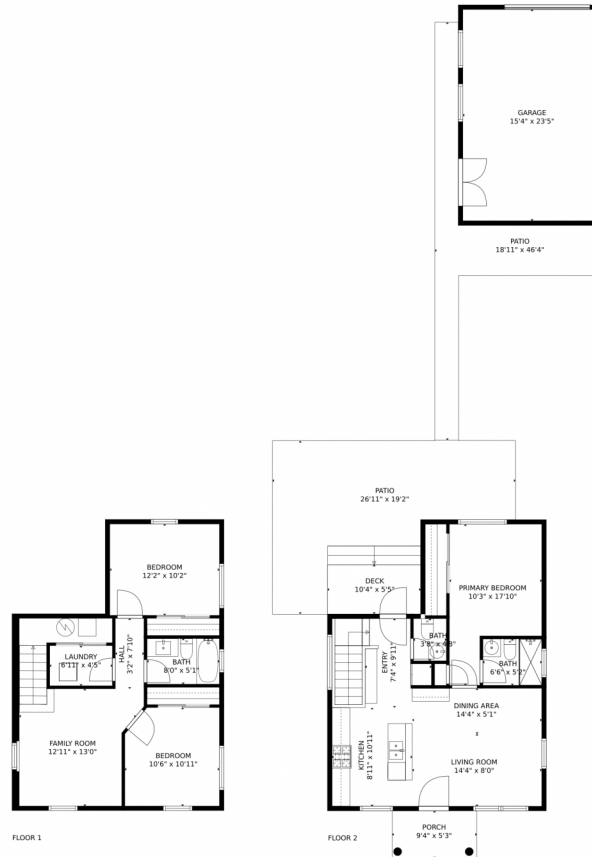
Disclaimer: Sizes and Dimensions are Approximate, Actual May Vary.



Douglas Clark
303-517-7155
dclark@dencorellc.com



4415 South Delaware Street, Englewood, CO 80110 – All Levels



TOTAL: 1209 sq. ft
Below Ground: 590 sq. ft, FLOOR 2: 619 sq. ft
EXCLUDED AREAS: GARAGE: 360 sq. ft, DECK: 56 sq. ft, PATIO: 564 sq. ft,
PORCH: 50 sq. ft

MEASUREMENTS CALCULATED BY V1Photos.com ARE DEEMED HIGHLY RELIABLE BUT NOT GUARANTEED.



Disclaimer: Sizes and Dimensions are Approximate, Actual May Vary.



Douglas Clark
303-517-7155
dclark@dencorellc.com

