


 Single Family

 2132 SQFT

 3 Beds

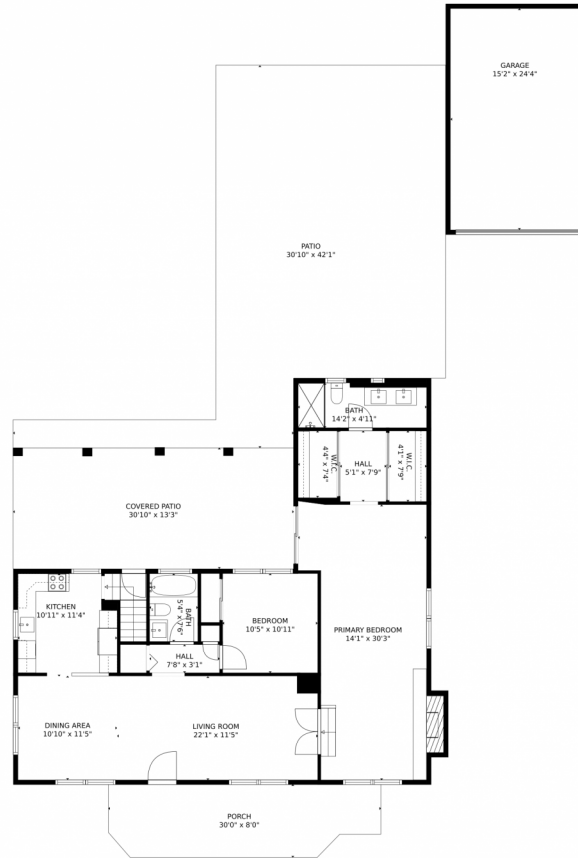
 3 Baths



Taylor Haas
303-665-7368
taylorh@coloradorpm.com
<https://www.coloradorpm.com/available-rental-properties-denv>



761 Jennie Drive, Denver, CO 80221 – Main Level



TOTAL: 1906 sq. ft
Below Ground: 578 sq. ft, FLOOR 2: 1328 sq. ft
EXCLUDED AREAS: UTILITY: 158 sq. ft, PATIO: 1004 sq. ft, COVERED PATIO: 411 sq. ft,
PORCH: 222 sq. ft, GARAGE: 370 sq. ft

MEASUREMENTS CALCULATED BY V1Photos.com ARE DEEMED HIGHLY RELIABLE BUT NOT GUARANTEED.



Disclaimer: Sizes and Dimensions are Approximate, Actual May Vary.



Taylor Haas

303-665-7368

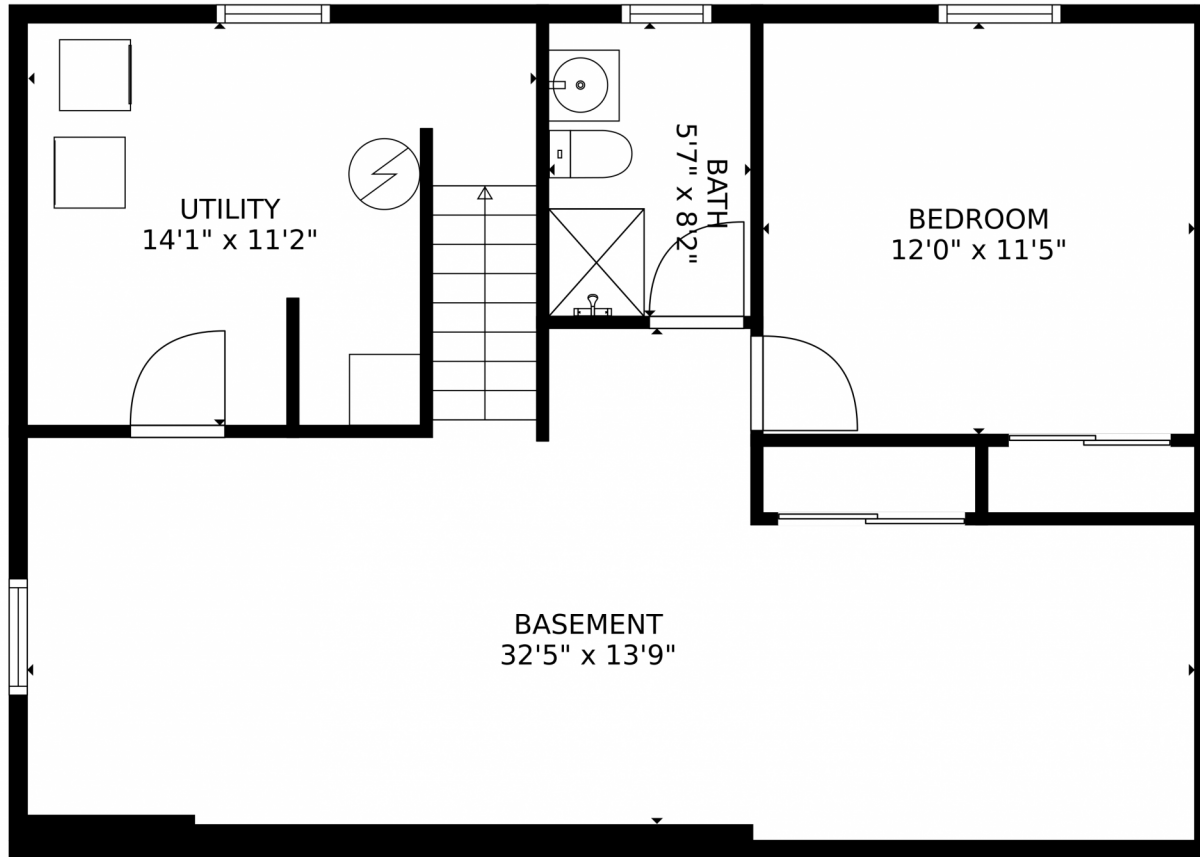
taylorh@coloradorpm.com

<https://www.coloradorpm.com/available-rental-properties-denver>



Scan code
for more
property
details





TOTAL: 1906 sq. ft
Below Ground: 578 sq. ft, FLOOR 2: 1328 sq. ft
EXCLUDED AREAS: UTILITY: 158 sq. ft, PATIO: 1004 sq. ft, COVERED PATIO: 411 sq. ft,
PORCH: 222 sq. ft, GARAGE: 370 sq. ft
MEASUREMENTS CALCULATED BY V1Photos.com ARE DEEMED HIGHLY RELIABLE BUT NOT GUARANTEED.

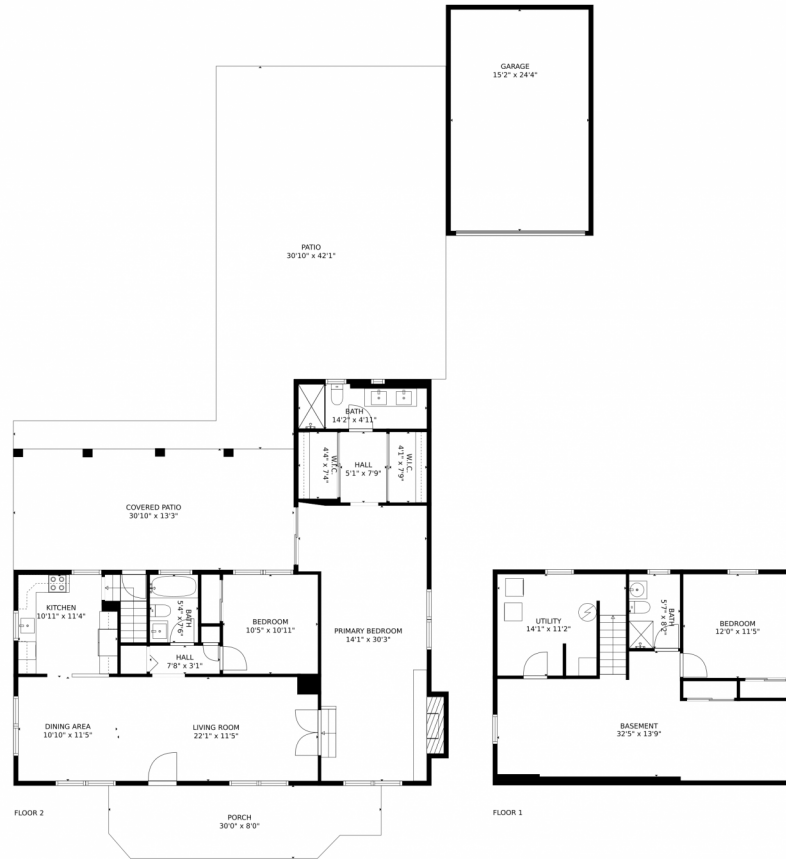
Disclaimer: Sizes and Dimensions are Approximate, Actual May Vary.



Taylor Haas
303-665-7368
taylorh@coloradorpm.com
<https://www.coloradorpm.com/available-rental-properties-denver>



761 Jennie Drive, Denver, CO 80221 – All Levels



TOTAL: 1906 sq. ft
Below Ground: 578 sq. ft, FLOOR 2: 1328 sq. ft
EXCLUDED AREAS: UTILITY: 158 sq. ft, PATIO: 1004 sq. ft, COVERED PATIO: 411 sq. ft,
PORCH: 222 sq. ft, GARAGE: 370 sq. ft

MEASUREMENTS CALCULATED BY V1Photos.com ARE DEEMED HIGHLY RELIABLE BUT NOT GUARANTEED.



Disclaimer: Sizes and Dimensions are Approximate, Actual May Vary.



Taylor Haas

303-665-7368

taylorh@coloradorpm.com

<https://www.coloradorpm.com/available-rental-properties-denv>



Scan code
for more
property
details

