



Single Family



1485 SQFT



3 Beds



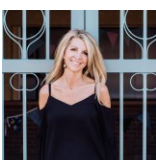
2 Baths



2 Car



0.17 Acre

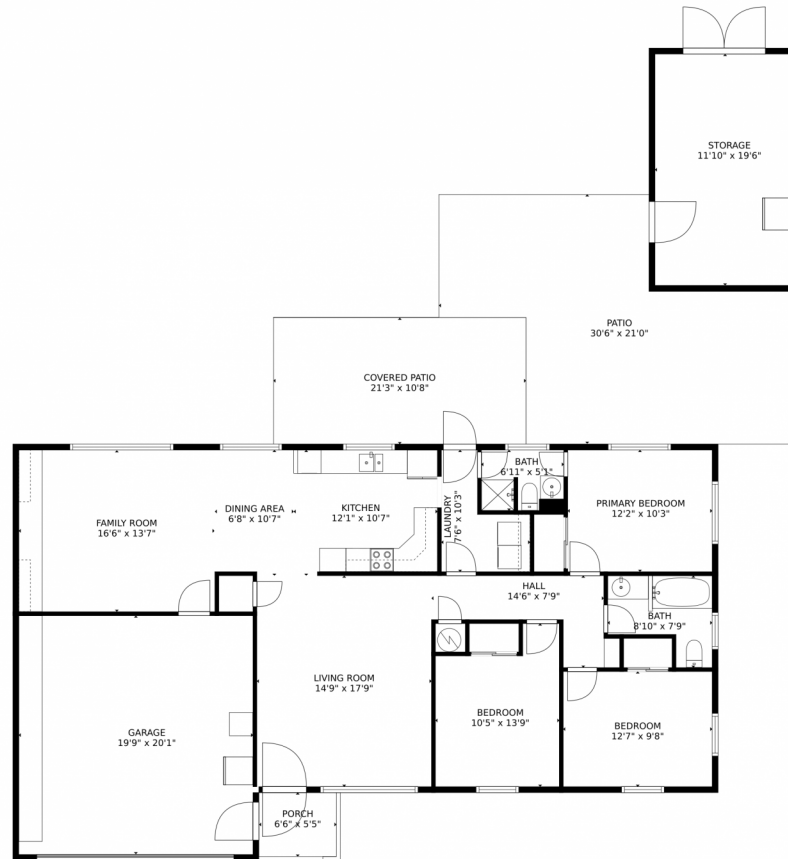


Christy Hepp
303-910-5393
cnishi1068@msn.com
<https://christysellscolorado.com>



Scan code
for more
property
details

1736 Atwood Street, Longmont, CO 80501 – Main Level



TOTAL: 1363 sq. ft
FLOOR 1: 1363 sq. ft
EXCLUDED AREAS: PORCH: 35 sq. ft, PATIO: 460 sq. ft, COVERED PATIO: 227 sq. ft,
GARAGE: 397 sq. ft, STORAGE: 231 sq. ft

MEASUREMENTS CALCULATED BY V1Photos.com ARE DEEMED HIGHLY RELIABLE BUT NOT GUARANTEED.



Disclaimer: Sizes and Dimensions are Approximate, Actual May Vary.



Christy Hepp
303-910-5393
cnishi1068@msn.com
<https://christysellscolorado.com>



Scan code for more property details