



5179 S Fairplay Street
 Aurora, CO 80015
 COMMUNITY: Shalom Park

MLS # 2778326
 PRICE \$528,000



Townhouse 1564 SQFT 3 Beds 2/1 Baths 2 Car 0.03 Acre

PROPERTY DETAILS

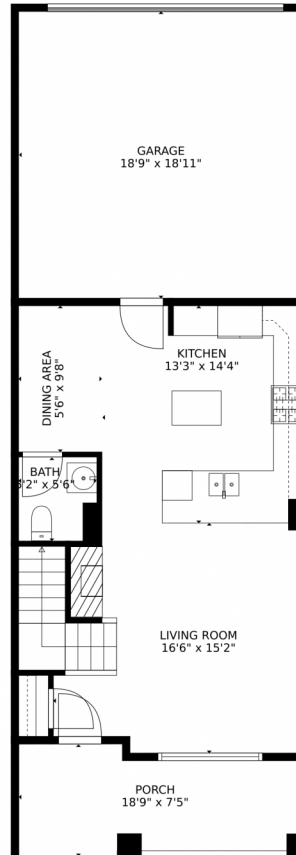
Welcome to your new home! This meticulously maintained townhome offers convenience, comfort, and style. With 3 bedrooms and 3 bathrooms, it's designed for contemporary living. The attached 2-car garage provides ample parking and storage. Located just minutes from the Denver Tech Center, airport, and downtown, it's ideal for work and leisure. The primary suite is flooded with natural light and has two walk-in closets with adjustable shelving. The en-suite bathroom is luxurious. Each closet is equipped with shelving systems for maximum storage. The modern kitchen features a gourmet gas range and a large pantry. The laundry area is conveniently located on the upper floor. Despite the upscale amenities and prime location, the HOA dues are low. Don't miss the opportunity to make this exceptional townhome your own. Experience modern living, a convenient location, and thoughtful upgrades.



Ben Slingsby
 303-910-9561
 Ben@Slingsby-Homes.com



5179 S Fairplay Street, Aurora, CO 80015 – 1st Floor



TOTAL: 1457 sq. ft
FLOOR 1: 548 sq. ft, FLOOR 2: 909 sq. ft
EXCLUDED AREAS: PORCH: 126 sq. ft, GARAGE: 357 sq. ft

MEASUREMENTS CALCULATED BY V1Photos.com ARE DEEMED HIGHLY RELIABLE BUT NOT GUARANTEED.



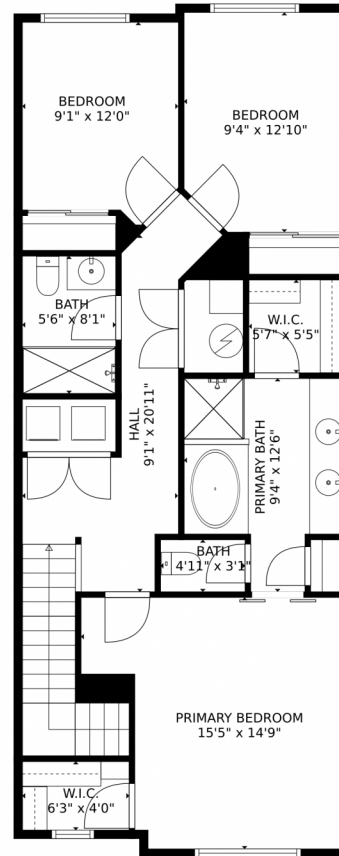
Disclaimer: Sizes and Dimensions are Approximate, Actual May Vary.



Ben Slingsby
303-910-9561
Ben@Slingsby-Homes.com



5179 S Fairplay Street, Aurora, CO 80015 – 2nd Floor



TOTAL: 1457 sq. ft
FLOOR 1: 548 sq. ft, FLOOR 2: 909 sq. ft
EXCLUDED AREAS: PORCH: 126 sq. ft, GARAGE: 357 sq. ft

MEASUREMENTS CALCULATED BY V1Photos.com ARE DEEMED HIGHLY RELIABLE BUT NOT GUARANTEED.



Disclaimer: Sizes and Dimensions are Approximate, Actual May Vary.

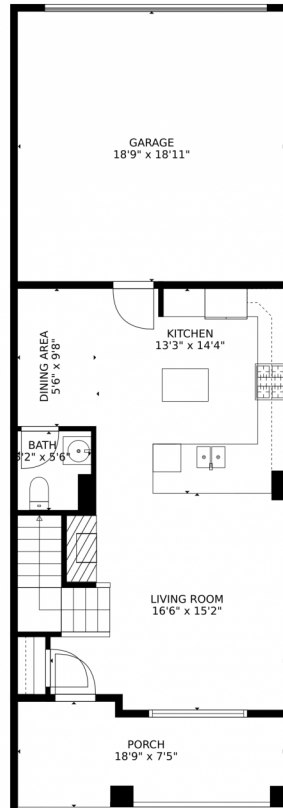


Ben Slingsby
303-910-9561
Ben@Slingsby-Homes.com

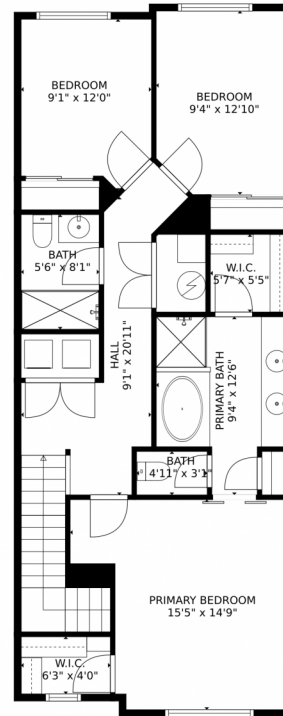


Scan code
for more
property
details

5179 S Fairplay Street, Aurora, CO 80015 – All Floors



FLOOR 1



FLOOR 2

TOTAL: 1457 sq. ft
FLOOR 1: 548 sq. ft, FLOOR 2: 909 sq. ft
EXCLUDED AREAS: PORCH: 126 sq. ft, GARAGE: 357 sq. ft

MEASUREMENTS CALCULATED BY V1Photos.COM ARE DEEMED HIGHLY RELIABLE BUT NOT GUARANTEED.



Disclaimer: Sizes and Dimensions are Approximate, Actual May Vary.



Ben Slingsby
303-910-9561
Ben@Slingsby-Homes.com



Scan code
for more
property
details

