



10887 Endeavor Dr  
 Parker, CO 80134  
 COMMUNITY: Overlook

MLS # 3695176  
 PRICE \$785,000

Built in 2019, Great location, Beautiful house!



Single Family   3067 SQFT   5 Beds   3 Baths   3 Car   0.1 Acre

## PROPERTY DETAILS

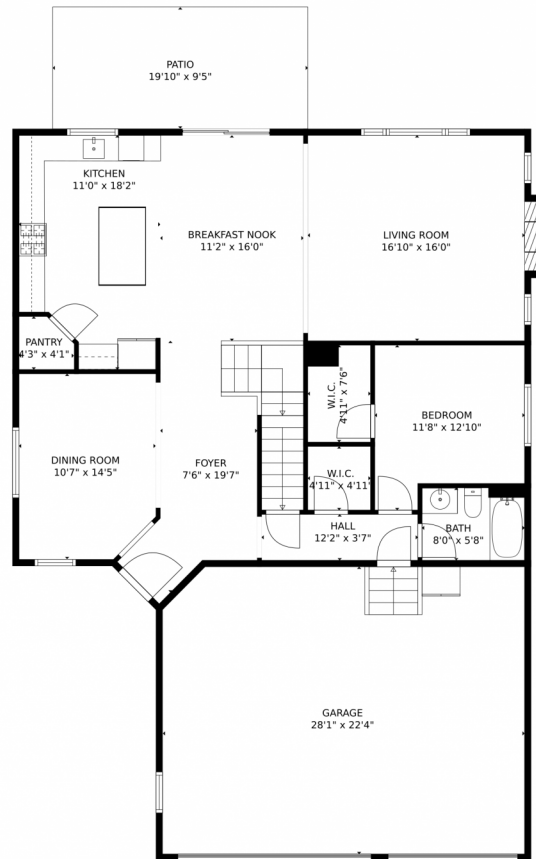
Welcome to 10887 Endeavor Dr, an exceptional residence in the esteemed Overlook community. This single-family home offers 5 bedrooms, 3 bathrooms, and a 3-car garage. The covered porch and large covered patio create a welcoming outdoor space. Inside, the kitchen features stainless steel appliances, a kitchen island, and stone countertops. Hardwood and tile flooring add sophistication. The versatile loft can be used as a home office or play area. The Overlook community offers amenities and access to the Cherry Creek Trail. Schedule a showing today at 10887 Endeavor Dr.



**Angelica Diaz**  
 801-927-7810  
 angelicadiaz@kw.com



# 10887 Endeavor Dr, Parker, CO 80134 – Main Level



**TOTAL: 2934 sq. ft**

Below Ground: 0 sq. ft, FLOOR 2: 1312 sq. ft, FLOOR 3: 1622 sq. ft

EXCLUDED AREAS: BASEMENT: 1309 sq. ft, GARAGE: 623 sq. ft, PATIO: 188 sq. ft,

FIREPLACE: 6 sq. ft, UNDEFINED: 16 sq. ft

MEASUREMENTS CALCULATED BY V1Photos.com ARE DEEMED HIGHLY RELIABLE BUT NOT GUARANTEED.



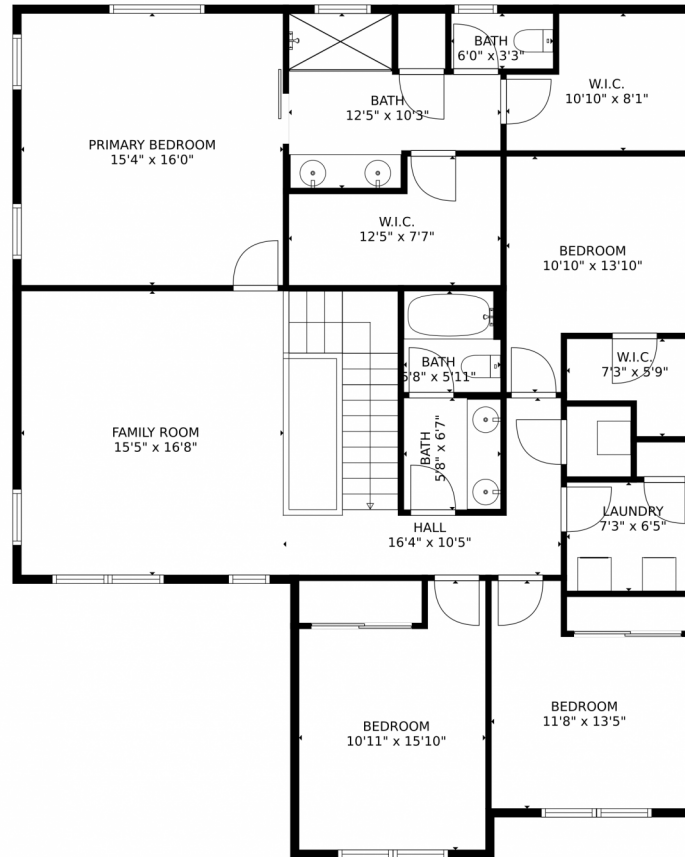
Disclaimer: Sizes and Dimensions are Approximate, Actual May Vary.



**Angelica Diaz**  
801-927-7810  
angelicadiaz@kw.com



# 10887 Endeavor Dr, Parker, CO 80134 – Upper Level



**TOTAL: 2934 sq. ft**  
Below Ground: 0 sq. ft, FLOOR 2: 1312 sq. ft, FLOOR 3: 1622 sq. ft  
EXCLUDED AREAS: BASEMENT: 1309 sq. ft, GARAGE: 623 sq. ft, PATIO: 188 sq. ft,  
FIREPLACE: 6 sq. ft, UNDEFINED: 16 sq. ft  
MEASUREMENTS CALCULATED BY V1Photos.com ARE DEEMED HIGHLY RELIABLE BUT NOT GUARANTEED.

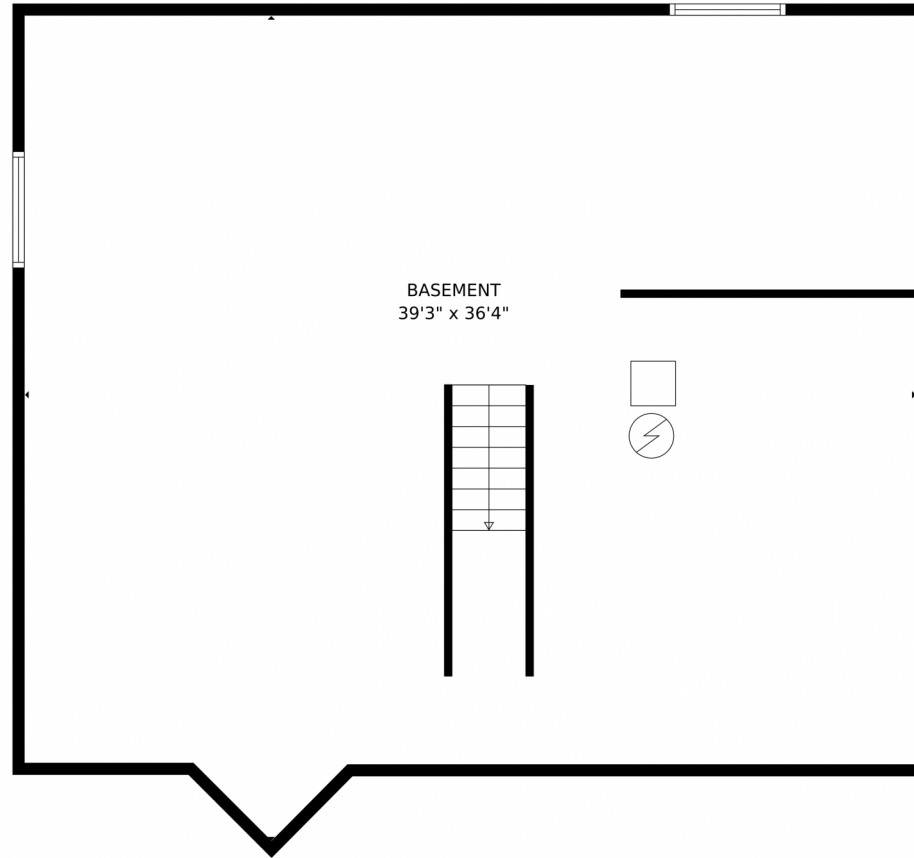


Disclaimer: Sizes and Dimensions are Approximate, Actual May Vary.



**Angelica Diaz**  
801-927-7810  
angelicadiaz@kw.com





**TOTAL: 2934 sq. ft**  
Below Ground: 0 sq. ft, FLOOR 2: 1312 sq. ft, FLOOR 3: 1622 sq. ft  
EXCLUDED AREAS: BASEMENT: 1309 sq. ft, GARAGE: 623 sq. ft, PATIO: 188 sq. ft,  
FIREPLACE: 6 sq. ft, UNDEFINED: 16 sq. ft

MEASUREMENTS CALCULATED BY V1Photos.com ARE DEEMED HIGHLY RELIABLE BUT NOT GUARANTEED.



Disclaimer: Sizes and Dimensions are Approximate, Actual May Vary.



**Angelica Diaz**  
801-927-7810  
angelicadiaz@kw.com





# 10887 Endeavor Dr, Parker, CO 80134 – All Levels



**TOTAL: 2934 sq. ft**  
Below Ground: 0 sq. ft, FLOOR 2: 1312 sq. ft, FLOOR 3: 1622 sq. ft  
EXCLUDED AREAS: BASEMENT: 1309 sq. ft, GARAGE: 623 sq. ft, PATIO: 188 sq. ft,  
FIREPLACE: 6 sq. ft, UNDEFINED: 16 sq. ft

MEASUREMENTS CALCULATED BY V1Photos.com ARE DEEMED HIGHLY RELIABLE BUT NOT GUARANTEED.



Disclaimer: Sizes and Dimensions are Approximate, Actual May Vary.



Angelica Diaz  
801-927-7810  
angelicadiaz@kw.com

