



Single Family



4831 SQFT



4 Beds



3/1 Baths



4 Car



1.3 Acre

PROPERTY DETAILS

Welcome to exceptional living in Hiwan Hills. This custom Honka log home spans 4,831 sq.ft. and blends luxury with comfort and elegance. Built with Finnish wood logs, Rico Granite stone, and durable tile, it exudes classic log cabin charm and modern amenities. Inside, unique features like beamed ceilings, exposed trusses, Rico Granite, and polished Brazilian Cherry hardwood floors create a sophisticated atmosphere. The great room offers stunning views of Mount Blue Sky and Evergreen Valley. The gourmet kitchen is a culinary haven. The house boasts two luxurious primary suites with custom walk-in closets, private ensuite baths, and personal balconies. Downstairs, the family room features a gas fireplace, wet bar, and lounge. Don't forget the custom wine room with a 1,500-bottle capacity. The home offers year-round comfort with radiant heating, AC, and a central vacuum system. 785 sq.ft. of TimberTech Earthwood decks provide ample space for outdoor enjoyment. The property includes a 4-car garage with finished storage cabinets and a 2-car detached garage. Located minutes from I-70 and Evergreen Parkway, this home blends luxury, comfort, and breathtaking views. Don't miss the chance to make this indulgent escape your new dream home.



Tammy Drozda

720-308-1652

tammy@madisonprops.com

<https://www.tammydrozdahomes.com>

Scan code
for more
property
details



29590 Buchanan Dr, Evergreen, CO 80439 — main level



TOTAL: 4206 sq. ft
Below Ground: 1551 sq. ft, FLOOR 2: 1892 sq. ft, FLOOR 3: 763 sq. ft
EXCLUDED AREAS: WINE CELLAR: 142 sq. ft, ELECTRICAL ROOM: 42 sq. ft, GARAGE: 920 sq. ft,
BALCONY: 851 sq. ft, OPEN TO BELOW: 394 sq. ft

Floor Plan Created By V1photos.com, Measurements Deamed Highly Reliable But Not Guaranteed.



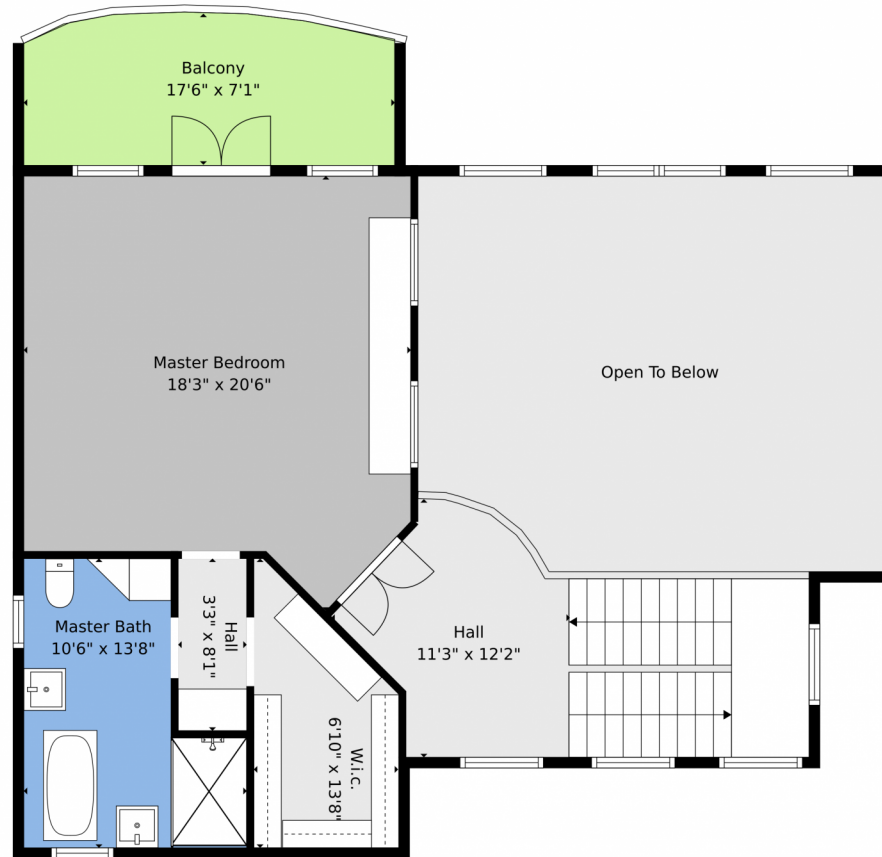
Disclaimer: Sizes and Dimensions are Approximate, Actual May Vary.



Tammy Drozda
720-308-1652
tammy@madisonprops.com
<https://www.tammydrozdahomes.com>



29590 Buchanan Dr, Evergreen, CO 80439 — upper level



TOTAL: 4206 sq. ft
Below Ground: 1551 sq. ft, FLOOR 2: 1892 sq. ft, FLOOR 3: 763 sq. ft
EXCLUDED AREAS: WINE CELLAR: 142 sq. ft, ELECTRICAL ROOM: 42 sq. ft, GARAGE: 920 sq. ft,
BALCONY: 851 sq. ft, OPEN TO BELOW: 394 sq. ft

Floor Plan Created By V1photos.com, Measurements Deamed Highly Reliable But Not Guaranteed.



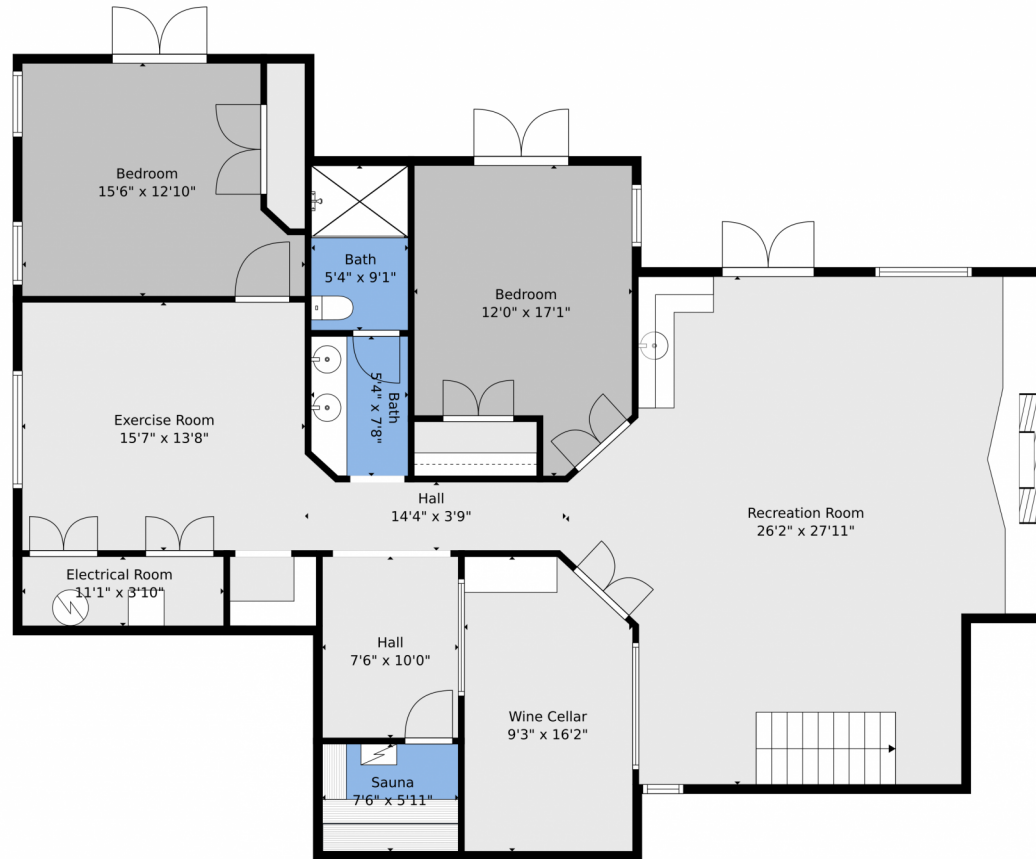
Disclaimer: Sizes and Dimensions are Approximate, Actual May Vary.



Tammy Drozda
720-308-1652
tammy@madisonprops.com
<https://www.tammydrozdahomes.com>



29590 Buchanan Dr, Evergreen, CO 80439 – lower level



TOTAL: 4206 sq. ft
Below Ground: 1551 sq. ft, FLOOR 2: 1892 sq. ft, FLOOR 3: 763 sq. ft
EXCLUDED AREAS: WINE CELLAR: 142 sq. ft, ELECTRICAL ROOM: 42 sq. ft, GARAGE: 920 sq. ft,
BALCONY: 851 sq. ft, OPEN TO BELOW: 394 sq. ft

Floor Plan Created By V1photos.com, Measurements Deemed Highly Reliable But Not Guaranteed.



Disclaimer: Sizes and Dimensions are Approximate, Actual May Vary.



Tammy Drozda
720-308-1652
tammy@madisonprops.com
<https://www.tammydrozdahomes.com>



Scan code
for more
property
details

29590 Buchanan Dr, Evergreen, CO 80439 — all levels



TOTAL: 4206 sq. ft
 Below Ground: 1551 sq. ft, FLOOR 2: 1892 sq. ft, FLOOR 3: 763 sq. ft
 EXCLUDED AREAS: WINE CELLAR: 142 sq. ft, ELECTRICAL ROOM: 42 sq. ft, GARAGE: 920 sq. ft,
 BALCONY: 851 sq. ft, OPEN TO BELOW: 394 sq. ft

Floor Plan Created By V1photos.com, Measurements Deamed Highly Reliable But Not Guaranteed.



Disclaimer: Sizes and Dimensions are Approximate, Actual May Vary.



Tammy Drozda
 720-308-1652
 tammy@madisonprops.com
<https://www.tammydrozdahomes.com>



Scan code
 for more
 property
 details