



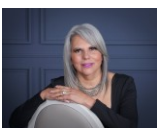
9600 Yucca Court  
Arvada, CO 80007



Single Family



5666 SQFT



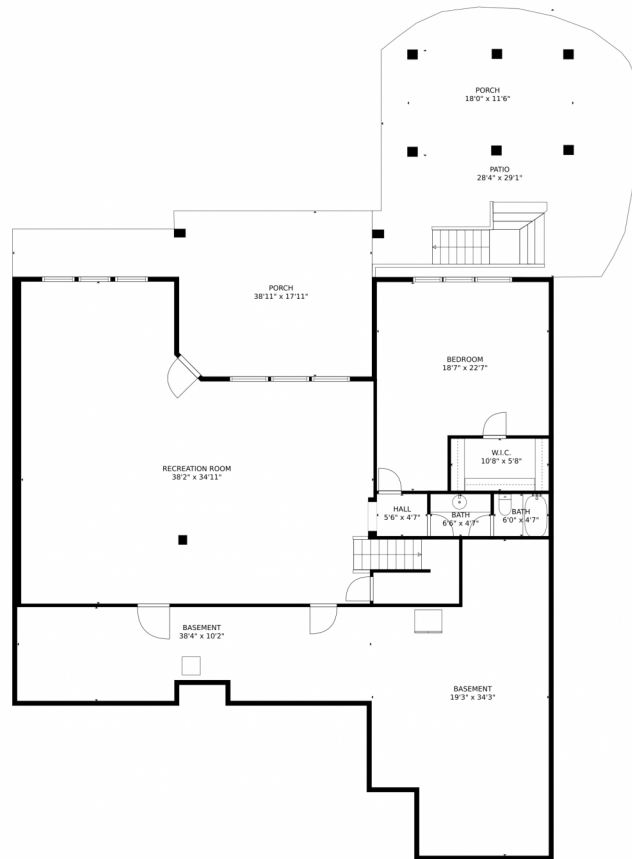
**Elise Kaynor**  
303-588-0391  
elise@ortizandassociatesinc.com



Scan code  
for more  
property  
details



# 9600 Yucca Court, Arvada, CO 80007 – Lower Level



**TOTAL: 4367 sq. ft**  
Below Ground: 1713 sq. ft, FLOOR 2: 2654 sq. ft  
EXCLUDED AREAS: PORCH: 976 sq. ft, PATIO: 549 sq. ft, BASEMENT: 926 sq. ft,  
GARAGE: 638 sq. ft, DECK: 363 sq. ft

MEASUREMENTS CALCULATED BY V1Photos.com ARE DEEMED HIGHLY RELIABLE BUT NOT GUARANTEED.



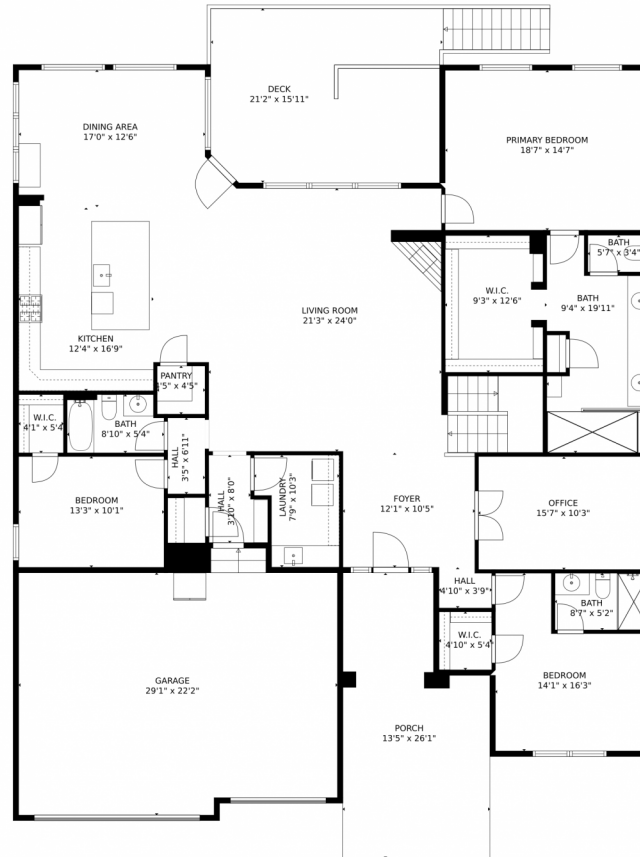
Disclaimer: Sizes and Dimensions are Approximate, Actual May Vary.



**Elise Kaynor**  
303-588-0391  
elise@ortizandassociatesinc.com



# 9600 Yucca Court, Arvada, CO 80007 – Main Level



**TOTAL: 4367 sq. ft**  
Below Ground: 1713 sq. ft, FLOOR 2: 2654 sq. ft  
EXCLUDED AREAS: PORCH: 976 sq. ft, PATIO: 549 sq. ft, BASEMENT: 926 sq. ft,  
GARAGE: 638 sq. ft, DECK: 363 sq. ft

MEASUREMENTS CALCULATED BY V1Photos.COM ARE DEEMED HIGHLY RELIABLE BUT NOT GUARANTEED.



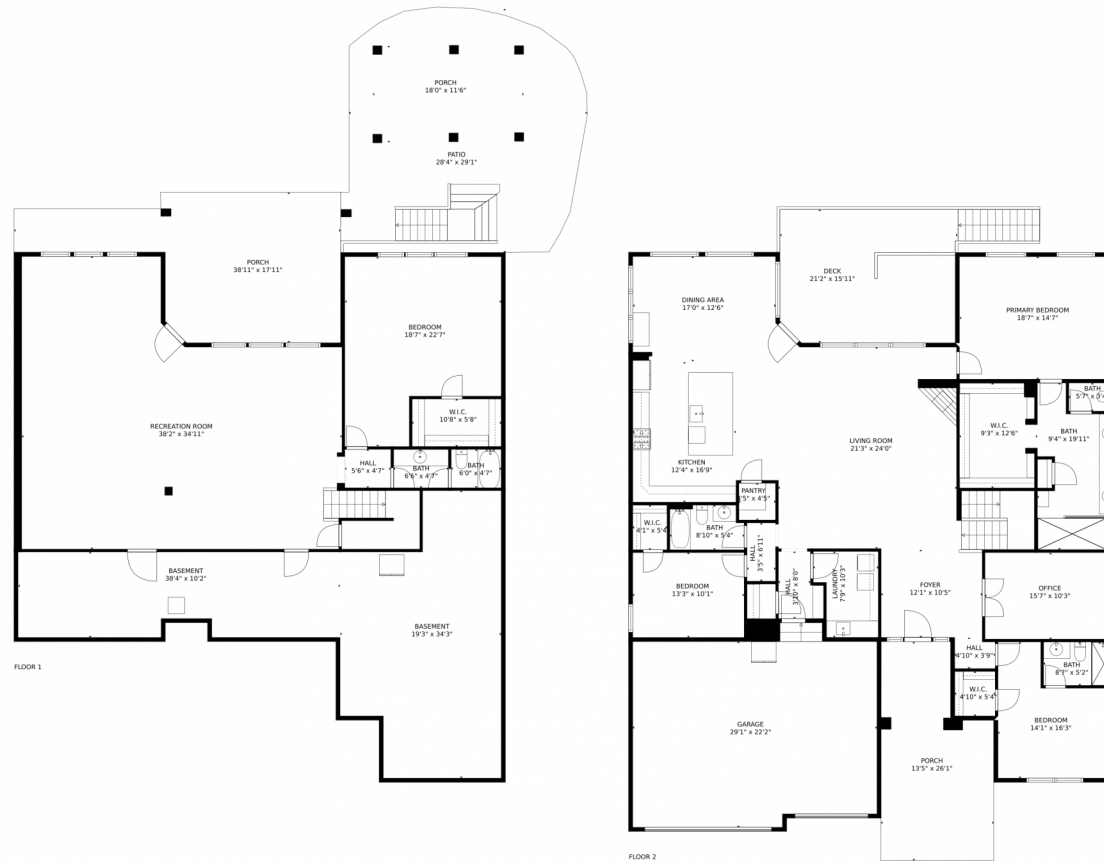
Disclaimer: Sizes and Dimensions are Approximate, Actual May Vary.



**Elise Kaynor**  
303-588-0391  
elise@ortizandassociatesinc.com



# 9600 Yucca Court, Arvada, CO 80007 – All Levels



**TOTAL: 4367 sq. ft**  
Below Ground: 1713 sq. ft, FLOOR 2: 2654 sq. ft  
EXCLUDED AREAS: PORCH: 976 sq. ft, PATIO: 549 sq. ft, BASEMENT: 926 sq. ft,  
GARAGE: 638 sq. ft, DECK: 363 sq. ft

MEASUREMENTS CALCULATED BY V1Photos.com ARE DEEMED HIGHLY RELIABLE BUT NOT GUARANTEED.



Disclaimer: Sizes and Dimensions are Approximate, Actual May Vary.



**Elise Kaynor**  
303-588-0391  
elise@ortizandassociatesinc.com

