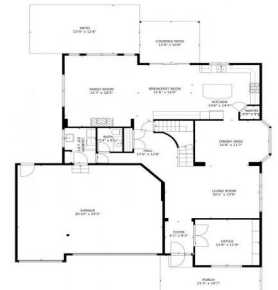




80 Ortega Court
 Erie, CO 80516
COMMUNITY: Erie Commons



80 Ortega Court, Erie, CO 80516 - Main Level



Single Family



4114 SQFT



5 Beds



4/1 Baths



3 Car



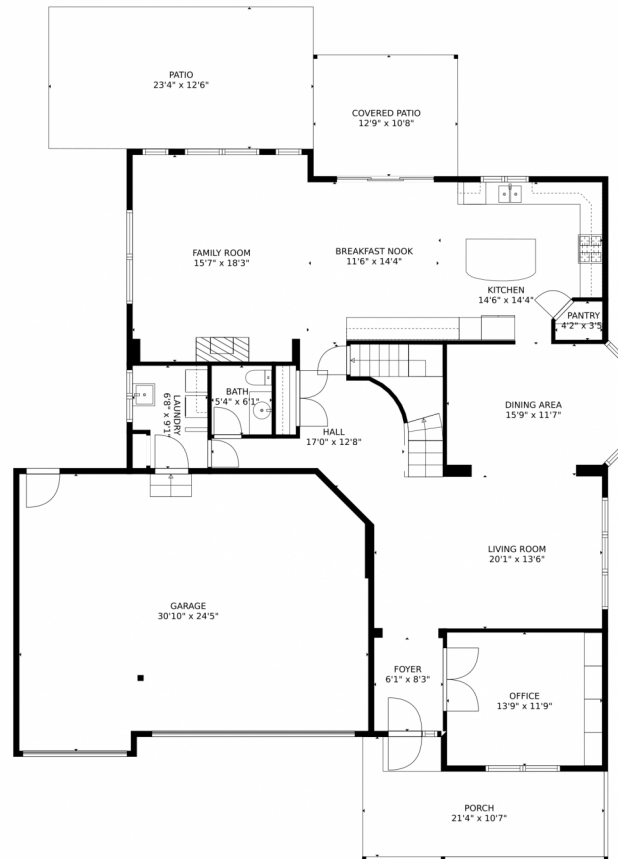
Paul D. Andrews
 720-270-1306
 andrews.realtor@gmail.com
<https://www.greaterdenverhomesite.com/paul-andrews/>



Scan code
 for more
 property
 details



80 Ortega Court, Erie, CO 80516 – Main Level



TOTAL: 4096 sq. ft
Below Ground: 1274 sq. ft, FLOOR 2: 1625 sq. ft, FLOOR 3: 1197 sq. ft
EXCLUDED AREAS: ELECTRICAL ROOM: 112 sq. ft, GARAGE: 706 sq. ft, PORCH: 182 sq. ft,
PATIO: 293 sq. ft, COVERED PATIO: 137 sq. ft, OPEN TO BELOW: 160 sq. ft

MEASUREMENTS CALCULATED BY V1Photos.com ARE DEEMED HIGHLY RELIABLE BUT NOT GUARANTEED.



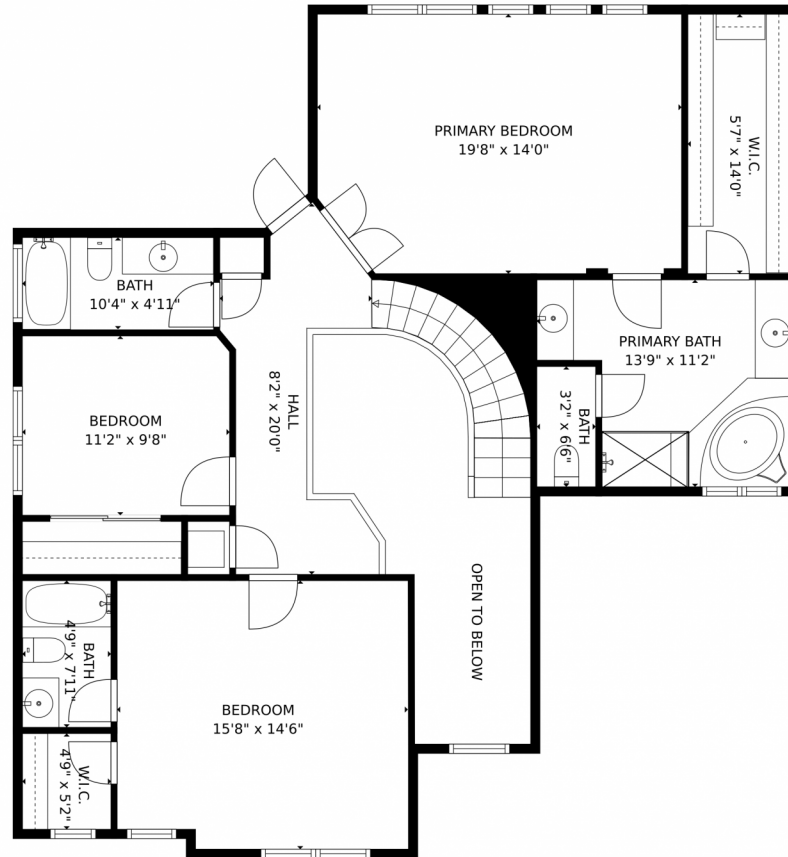
Disclaimer: Sizes and Dimensions are Approximate, Actual May Vary.



Paul D. Andrews
720-270-1306
andrews.realtor@gmail.com
<https://www.greaterdenverhomesite.com/paul-andrews/>



80 Ortega Court, Erie, CO 80516 – Upper Level



TOTAL: 4096 sq. ft
Below Ground: 1274 sq. ft, FLOOR 2: 1625 sq. ft, FLOOR 3: 1197 sq. ft
EXCLUDED AREAS: ELECTRICAL ROOM: 112 sq. ft, GARAGE: 706 sq. ft, PORCH: 182 sq. ft,
PATIO: 293 sq. ft, COVERED PATIO: 137 sq. ft, OPEN TO BELOW: 160 sq. ft
MEASUREMENTS CALCULATED BY V1Photos.com ARE DEEMED HIGHLY RELIABLE BUT NOT GUARANTEED.



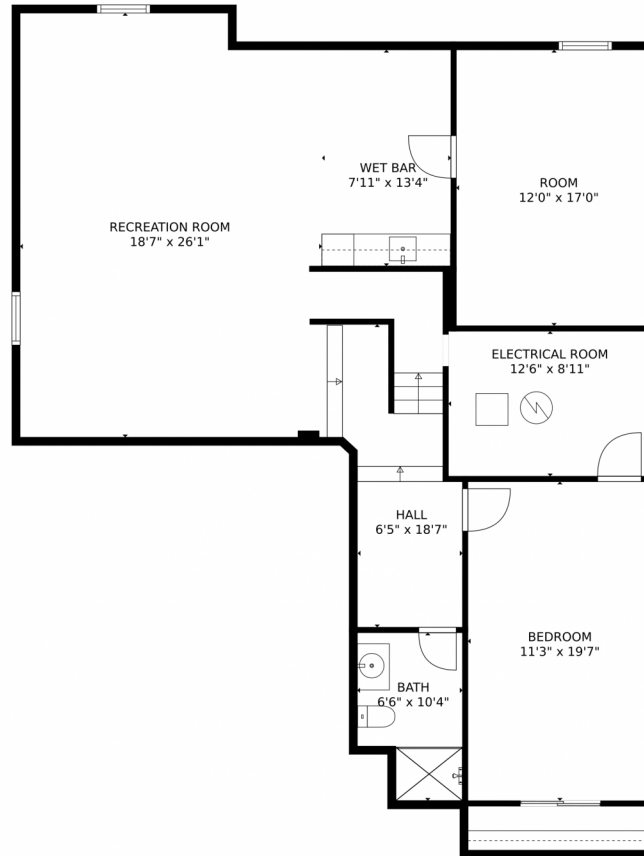
Disclaimer: Sizes and Dimensions are Approximate, Actual May Vary.



Paul D. Andrews
720-270-1306
andrews.realtor@gmail.com
<https://www.greaterdenverhomesite.com/paul-andrews/>



80 Ortega Court, Erie, CO 80516 – Lower Level



TOTAL: 4096 sq. ft
Below Ground: 1274 sq. ft, FLOOR 2: 1625 sq. ft, FLOOR 3: 1197 sq. ft
EXCLUDED AREAS: ELECTRICAL ROOM: 112 sq. ft, GARAGE: 706 sq. ft, PORCH: 182 sq. ft,
PATIO: 293 sq. ft, COVERED PATIO: 137 sq. ft, OPEN TO BELOW: 160 sq. ft
MEASUREMENTS CALCULATED BY V1Photos.com ARE DEEMED HIGHLY RELIABLE BUT NOT GUARANTEED.



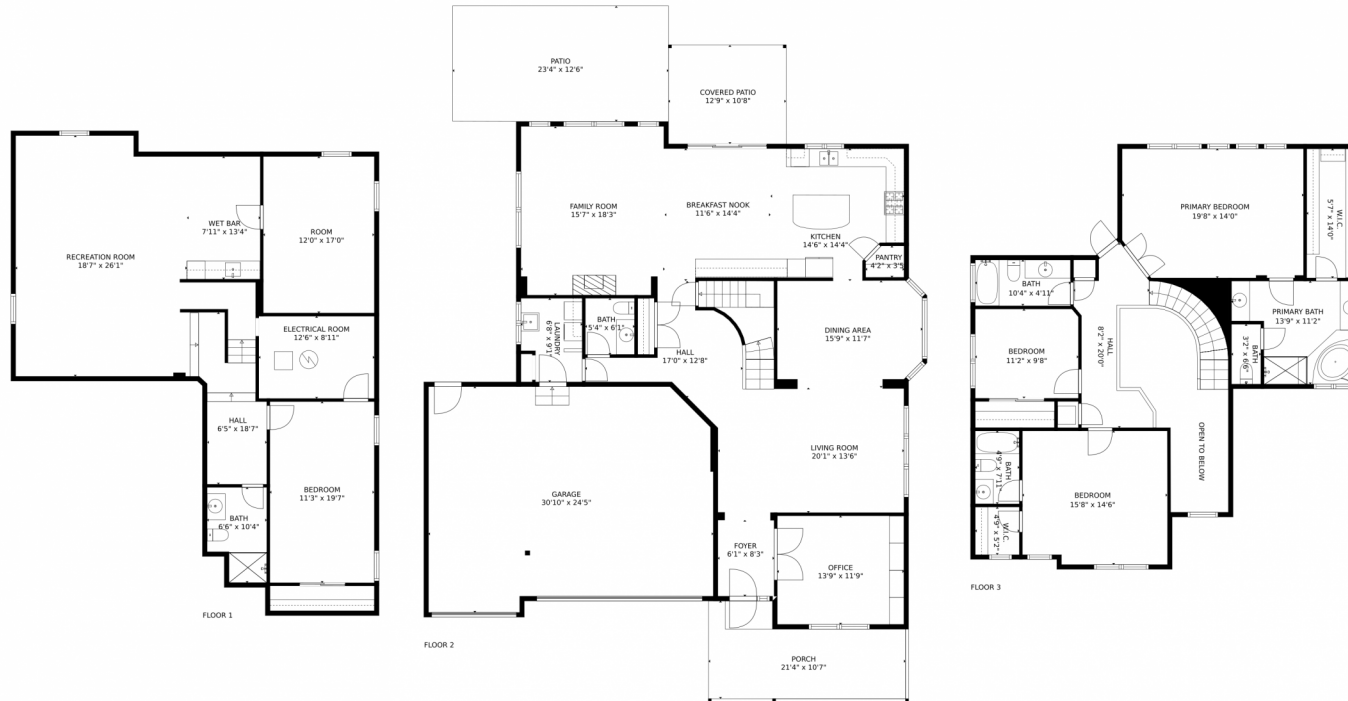
Disclaimer: Sizes and Dimensions are Approximate, Actual May Vary.



Paul D. Andrews
720-270-1306
andrews.realtor@gmail.com
<https://www.greaterdenverhomesite.com/paul-andrews/>



80 Ortega Court, Erie, CO 80516 – All Levels



TOTAL: 4096 sq. ft
 Below Ground: 1274 sq. ft, FLOOR 2: 1625 sq. ft, FLOOR 3: 1197 sq. ft
 EXCLUDED AREAS: ELECTRICAL ROOM: 112 sq. ft, GARAGE: 706 sq. ft, PORCH: 182 sq. ft,
 PATIO: 293 sq. ft, COVERED PATIO: 137 sq. ft, OPEN TO BELOW: 160 sq. ft

MEASUREMENTS CALCULATED BY V1Photos.com ARE DEEMED HIGHLY RELIABLE BUT NOT GUARANTEED.



Disclaimer: Sizes and Dimensions are Approximate, Actual May Vary.



Paul D. Andrews
 720-270-1306
 andrews.realtor@gmail.com
<https://www.greaterdenverhomesite.com/paul-andrews/>



Scan code
 for more
 property
 details

