



1340 Royal Troon Drive
Castle Rock, CO 80104
COMMUNITY: Plum Creek Fairway 13

MLS # 1618716
PRICE \$458,000



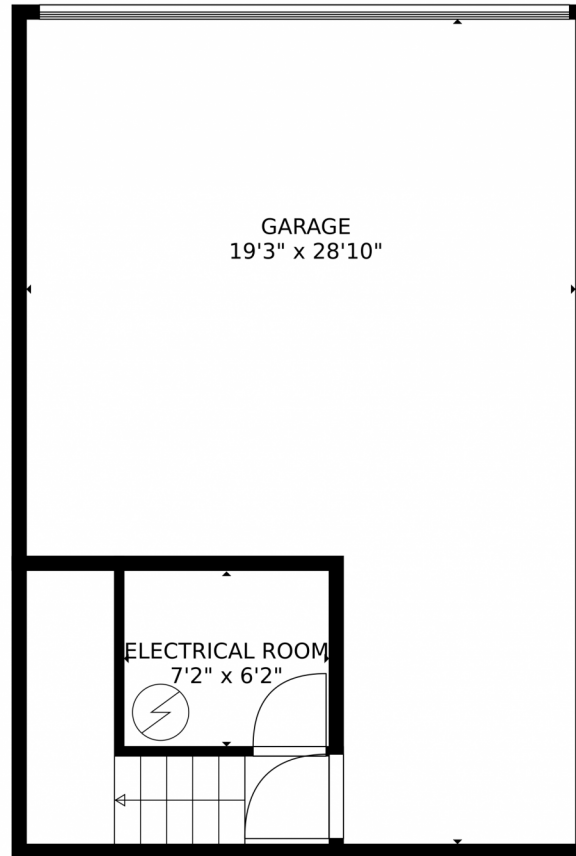
Townhouse 1241 SQFT 3 Beds 2/1 Baths 2 Car



Monica Davidson
720-988-5285
movewithmonicanow@gmail.com

Scan code for more property details





TOTAL: 1213 sq. ft
Below Ground: 57 sq. ft, FLOOR 2: 555 sq. ft, FLOOR 3: 601 sq. ft
EXCLUDED AREAS: GARAGE: 443 sq. ft, ELECTRICAL ROOM: 44 sq. ft
MEASUREMENTS CALCULATED BY V1Photos.com ARE DEEMED HIGHLY RELIABLE BUT NOT GUARANTEED.

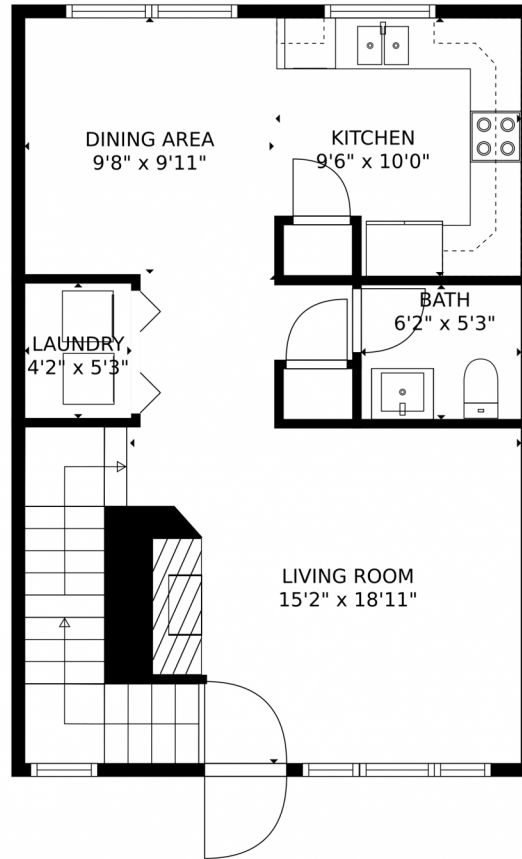


Disclaimer: Sizes and Dimensions are Approximate, Actual May Vary.



Monica Davidson
720-988-5285
movewithmonicanow@gmail.com





TOTAL: 1213 sq. ft
Below Ground: 57 sq. ft, FLOOR 2: 555 sq. ft, FLOOR 3: 601 sq. ft
EXCLUDED AREAS: GARAGE: 443 sq. ft, ELECTRICAL ROOM: 44 sq. ft
MEASUREMENTS CALCULATED BY V1Photos.com ARE DEEMED HIGHLY RELIABLE BUT NOT GUARANTEED.

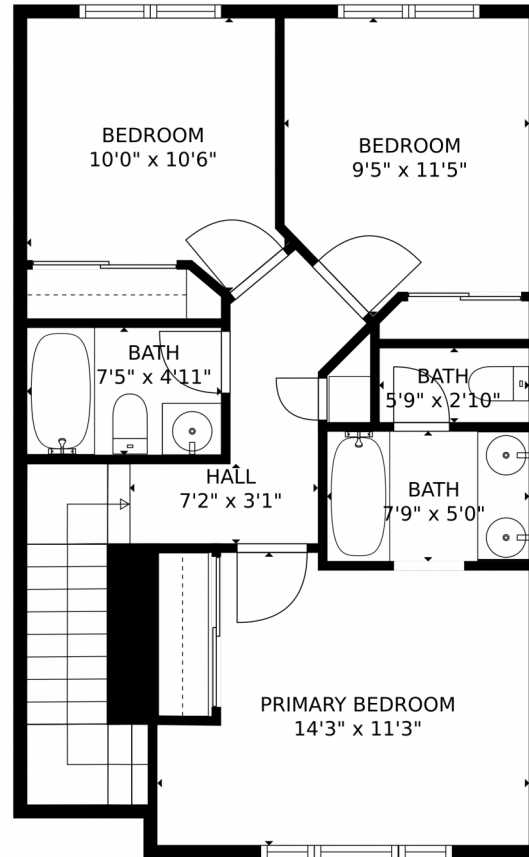


Disclaimer: Sizes and Dimensions are Approximate, Actual May Vary.



Monica Davidson
720-988-5285
movewithmonicanow@gmail.com





TOTAL: 1213 sq. ft
Below Ground: 57 sq. ft, FLOOR 2: 555 sq. ft, FLOOR 3: 601 sq. ft
EXCLUDED AREAS: GARAGE: 443 sq. ft, ELECTRICAL ROOM: 44 sq. ft
MEASUREMENTS CALCULATED BY V1Photos.com ARE DEEMED HIGHLY RELIABLE BUT NOT GUARANTEED.

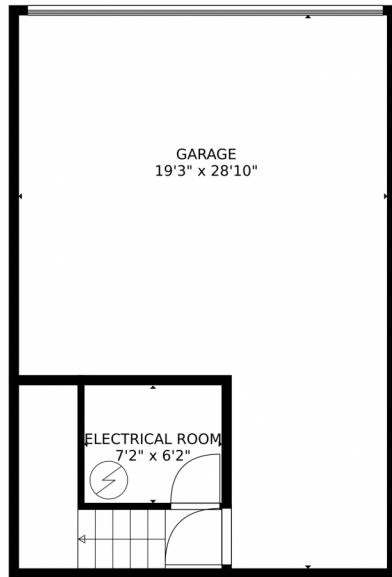


Disclaimer: Sizes and Dimensions are Approximate, Actual May Vary.

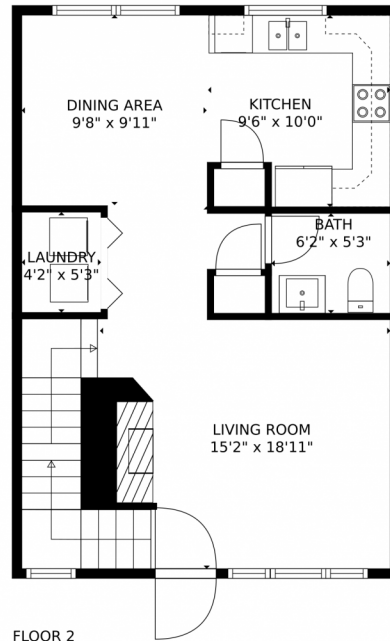


Monica Davidson
720-988-5285
movewithmonicanow@gmail.com

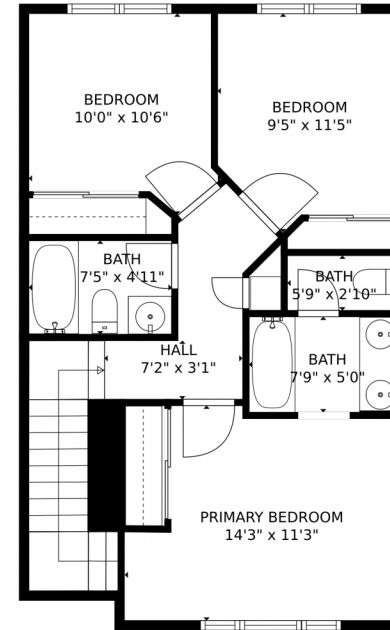




FLOOR 1



FLOOR 2



FLOOR 3

TOTAL: 1213 sq. ft
Below Ground: 57 sq. ft, FLOOR 2: 555 sq. ft, FLOOR 3: 601 sq. ft
EXCLUDED AREAS: GARAGE: 443 sq. ft, ELECTRICAL ROOM: 44 sq. ft
MEASUREMENTS CALCULATED BY V1Photos.com ARE DEEMED HIGHLY RELIABLE BUT NOT GUARANTEED.



Disclaimer: Sizes and Dimensions are Approximate, Actual May Vary.



Monica Davidson
720-988-5285
movewithmonicanow@gmail.com

