



738 Skyway Drive  
 Boulder, CO 80303  
 COMMUNITY: Panorama Park

MLS # 4556757

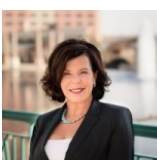
PRICE  
 \$3,950,000



Single Family   5874 SQFT   5 Beds   4/2 Baths   3 Car   1.17 Acre

## PROPERTY DETAILS

Remodeled home in Panorama Park with beautiful finishes. Living room with custom fireplace and open space for entertaining. Gourmet kitchen with custom cabinetry and high-end appliances. Primary suite with luxurious ensuite bathroom. Additional bedrooms and bathrooms on main and upper levels. Basement with personal gym, sauna, and theater room. Custom selections include surround sound system and water purification system. Landscaped yard with sprinkler system.



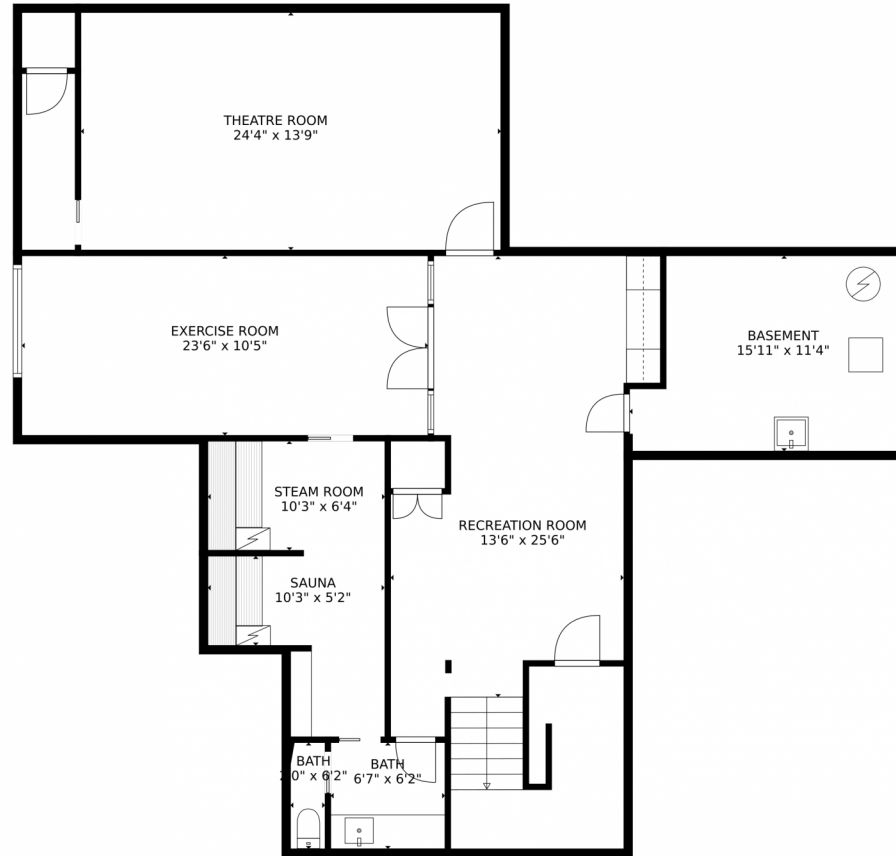
**Donna M. Demis**  
 303-579-0840  
 donna@coloradohomehelper.com



Scan code  
 for more  
 property  
 details



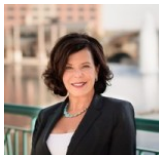
# 738 Skyway Drive, Boulder, CO 80303 – Lower Level



**TOTAL: 5606 sq. ft**  
BELOW GROUND: 1296 sq. ft, FLOOR 2: 3098 sq. ft, FLOOR 3: 1212 sq. ft  
EXCLUDED AREAS: BASEMENT: 164 sq. ft, PATIO: 1588 sq. ft, PORCH: 599 sq. ft,  
GARAGE: 782 sq. ft, LOW CEILING: 183 sq. ft, OPEN TO BELOW: 113 sq. ft  
MEASUREMENTS CALCULATED BY V1Photos.com ARE DEEMED HIGHLY RELIABLE BUT NOT GUARANTEED.



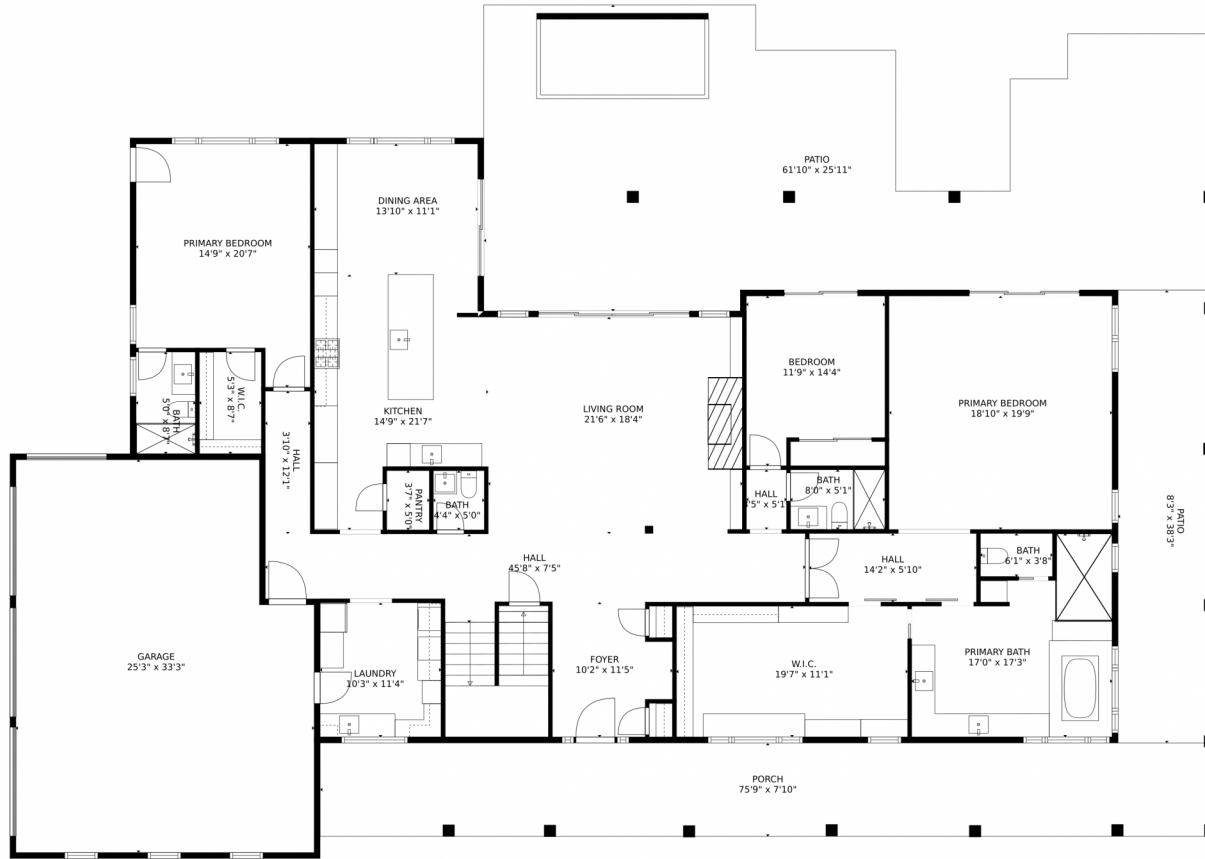
Disclaimer: Sizes and Dimensions are Approximate, Actual May Vary.



**Donna M. Demis**  
303-579-0840  
donna@coloradohomehelper.com



# 738 Skyway Drive, Boulder, CO 80303 – Main Level



**TOTAL: 5606 sq. ft**  
BELOW GROUND: 1296 sq. ft, FLOOR 2: 3098 sq. ft, FLOOR 3: 1212 sq. ft  
EXCLUDED AREAS: BASEMENT: 164 sq. ft, PATIO: 1588 sq. ft, PORCH: 599 sq. ft,  
GARAGE: 782 sq. ft, LOW CEILING: 183 sq. ft, OPEN TO BELOW: 113 sq. ft  
MEASUREMENTS CALCULATED BY V1Photos.COM ARE DEEMED HIGHLY RELIABLE BUT NOT GUARANTEED.



Disclaimer: Sizes and Dimensions are Approximate, Actual May Vary.

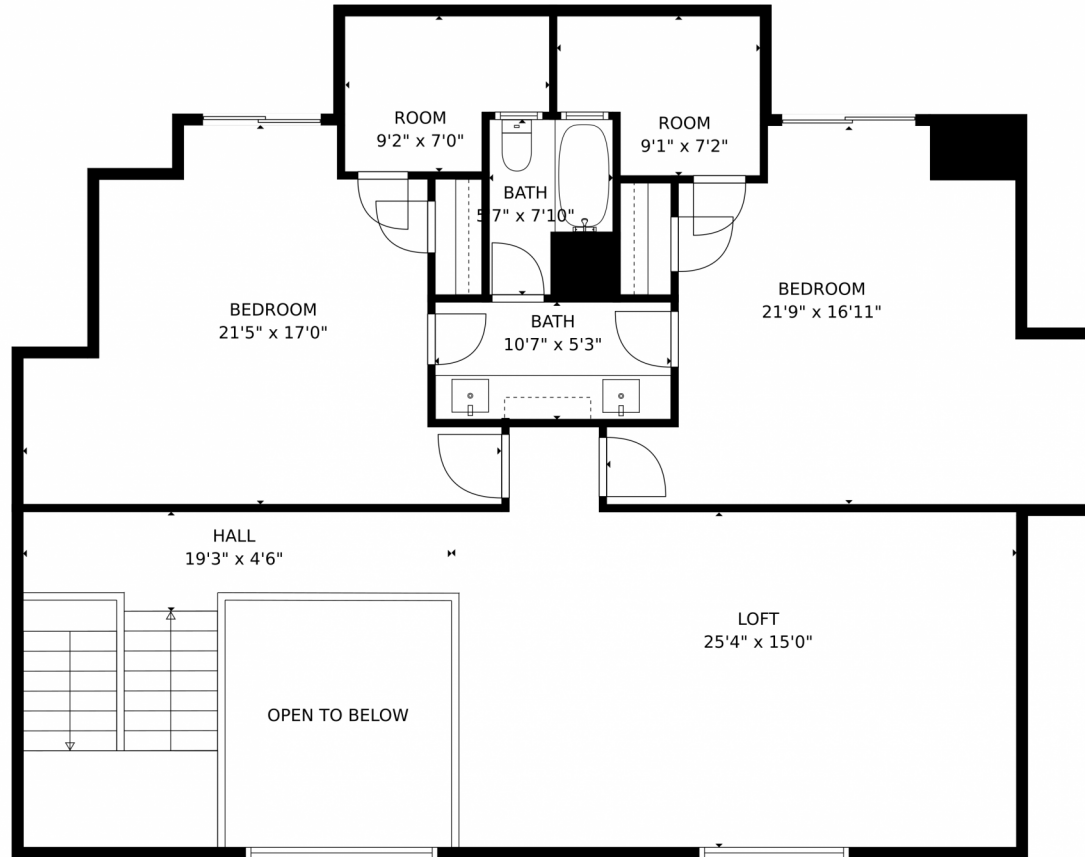


**Donna M. Demis**  
303-579-0840  
donna@coloradohomehelper.com



Scan code  
for more  
property  
details

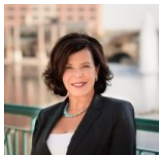
738 Skyway Drive, Boulder, CO 80303 – Upper Level



**TOTAL: 5606 sq. ft**  
BELOW GROUND: 1296 sq. ft, FLOOR 2: 3098 sq. ft, FLOOR 3: 1212 sq. ft  
EXCLUDED AREAS: BASEMENT: 164 sq. ft, PATIO: 1588 sq. ft, PORCH: 599 sq. ft,  
GARAGE: 782 sq. ft, LOW CEILING: 183 sq. ft, OPEN TO BELOW: 113 sq. ft  
MEASUREMENTS CALCULATED BY V1Photos.com ARE DEEMED HIGHLY RELIABLE BUT NOT GUARANTEED.



Disclaimer: Sizes and Dimensions are Approximate, Actual May Vary.



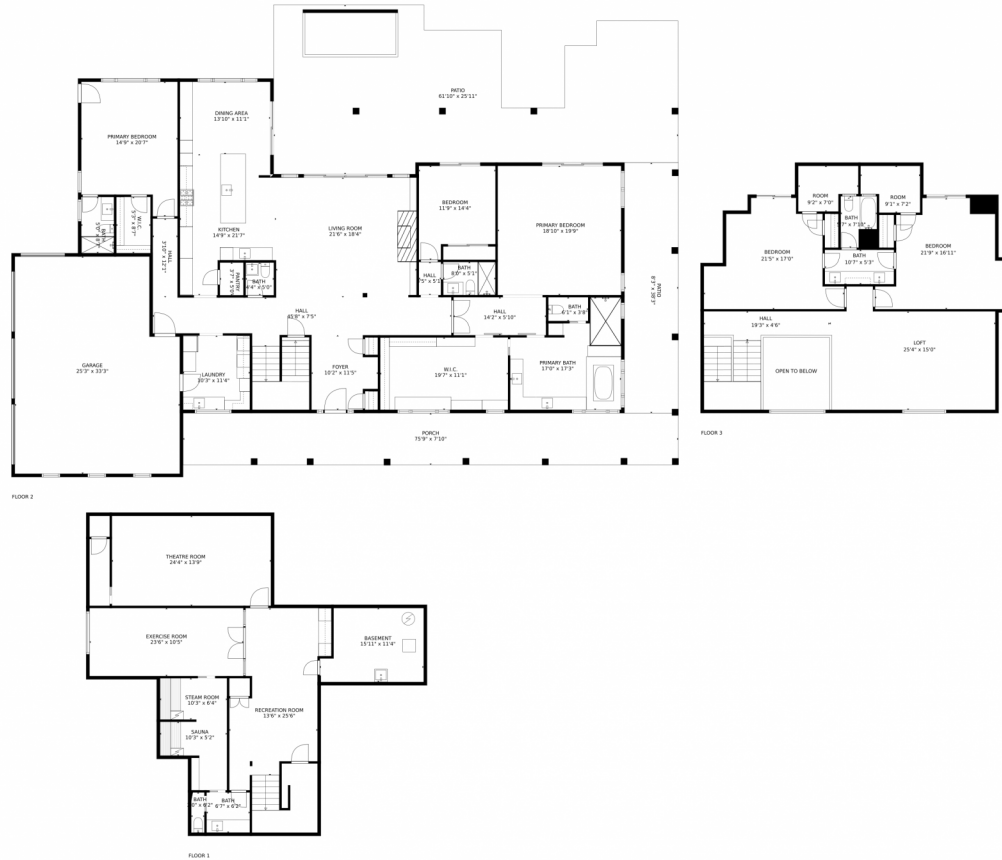
**Donna M. Demis**  
303-579-0840  
donna@coloradohomehelper.com



Scan code for more property details



# 738 Skyway Drive, Boulder, CO 80303 – All Levels



**TOTAL: 5606 sq. ft**  
 BELOW GROUND: 1296 sq. ft, FLOOR 2: 3098 sq. ft, FLOOR 3: 1212 sq. ft  
 EXCLUDED AREAS: BASEMENT: 164 sq. ft, PATIO: 1588 sq. ft, PORCH: 599 sq. ft,  
 GARAGE: 782 sq. ft, LOW CEILING: 183 sq. ft, OPEN TO BELOW: 113 sq. ft  
 MEASUREMENTS CALCULATED BY V1Photos.com ARE DEEMED HIGHLY RELIABLE BUT NOT GUARANTEED.



Disclaimer: Sizes and Dimensions are Approximate, Actual May Vary.



**Donna M. Demis**  
 303-579-0840  
 donna@coloradohomehelper.com



Scan code for more property details