





11346 Destination Drive
Broomfield, CO 80021



 Townhouse

 2334 SQFT

 3 Beds

 2/1 Baths

 1 Car

PROPERTY DETAILS

Discover this upgraded 2334 sf home in Arista. It features 3 BRs, a loft, and an open floor plan. Walkable to restaurants and shopping. High-end tile throughout. Fenced side yard with TREX deck. Tesla charger included. Listing details available.



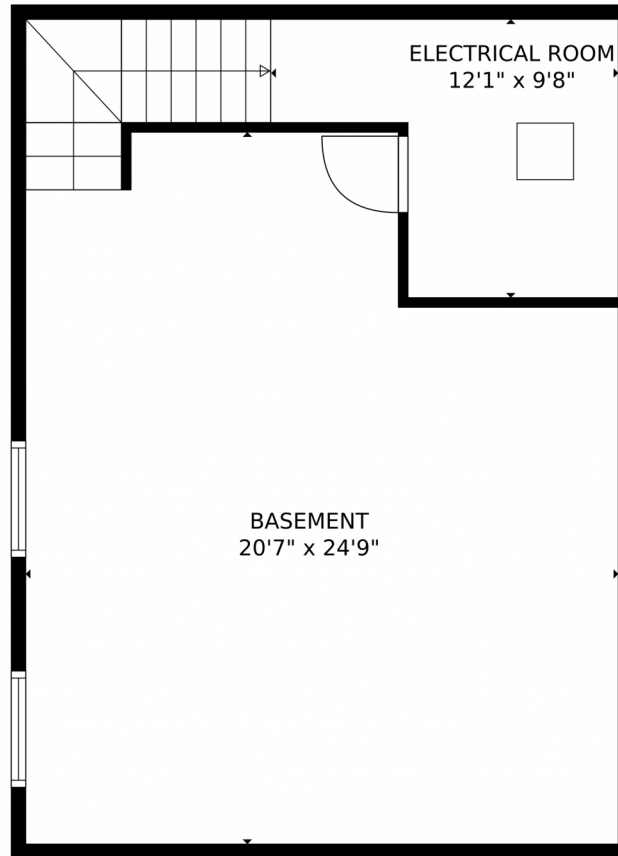
Carolyn Bleicher
303-219-1771
carolyn@carolynbleicher.com



Scan code
for more
property
details



11346 Destination Drive, Broomfield, CO 80021 – Lower Level



TOTAL: 1566 sq. ft
Below Ground: 0 sq. ft, FLOOR 2: 592 sq. ft, FLOOR 3: 974 sq. ft
EXCLUDED AREAS: ELECTRICAL ROOM: 94 sq. ft, BASEMENT: 497 sq. ft, GARAGE: 372 sq. ft,
DECK: 302 sq. ft, PORCH: 39 sq. ft

MEASUREMENTS CALCULATED BY V1Photos.com ARE DEEMED HIGHLY RELIABLE BUT NOT GUARANTEED.



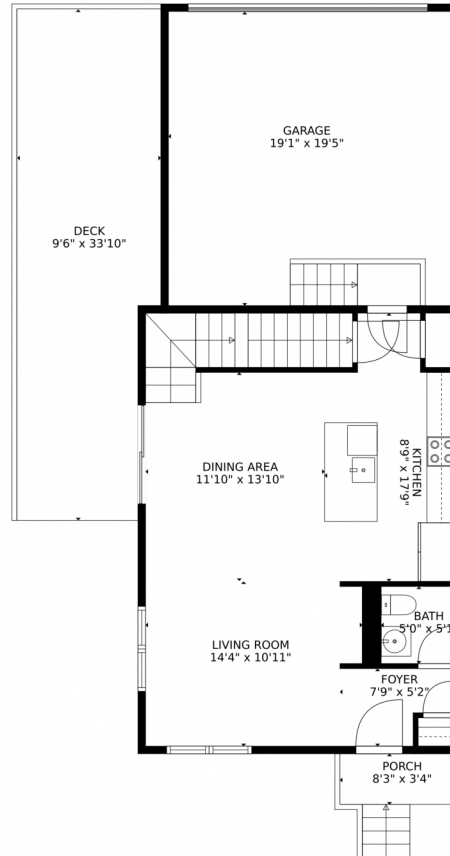
Disclaimer: Sizes and Dimensions are Approximate, Actual May Vary.



Carolyn Bleicher
303-219-1771
carolyn@carolynbleicher.com



11346 Destination Drive, Broomfield, CO 80021 — Main Level



TOTAL: 1566 sq. ft
Below Ground: 0 sq. ft, FLOOR 2: 592 sq. ft, FLOOR 3: 974 sq. ft
EXCLUDED AREAS: ELECTRICAL ROOM: 94 sq. ft, BASEMENT: 497 sq. ft, GARAGE: 372 sq. ft,
DECK: 302 sq. ft, PORCH: 39 sq. ft

MEASUREMENTS CALCULATED BY V1Photos.com ARE DEEMED HIGHLY RELIABLE BUT NOT GUARANTEED.



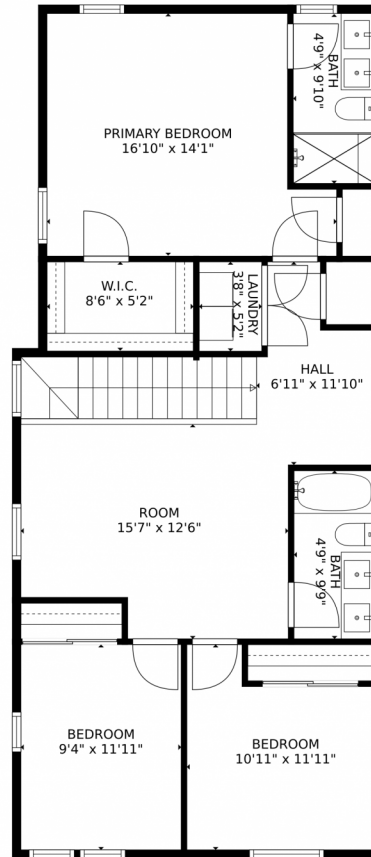
Disclaimer: Sizes and Dimensions are Approximate, Actual May Vary.



Carolyn Bleicher
303-219-1771
carolyn@carolynbleicher.com



11346 Destination Drive, Broomfield, CO 80021 – Upper Level



TOTAL: 1566 sq. ft
Below Ground: 0 sq. ft, FLOOR 2: 592 sq. ft, FLOOR 3: 974 sq. ft
EXCLUDED AREAS: ELECTRICAL ROOM: 94 sq. ft, BASEMENT: 497 sq. ft, GARAGE: 372 sq. ft,
DECK: 302 sq. ft, PORCH: 39 sq. ft

MEASUREMENTS CALCULATED BY V1Photos.com ARE DEEMED HIGHLY RELIABLE BUT NOT GUARANTEED.



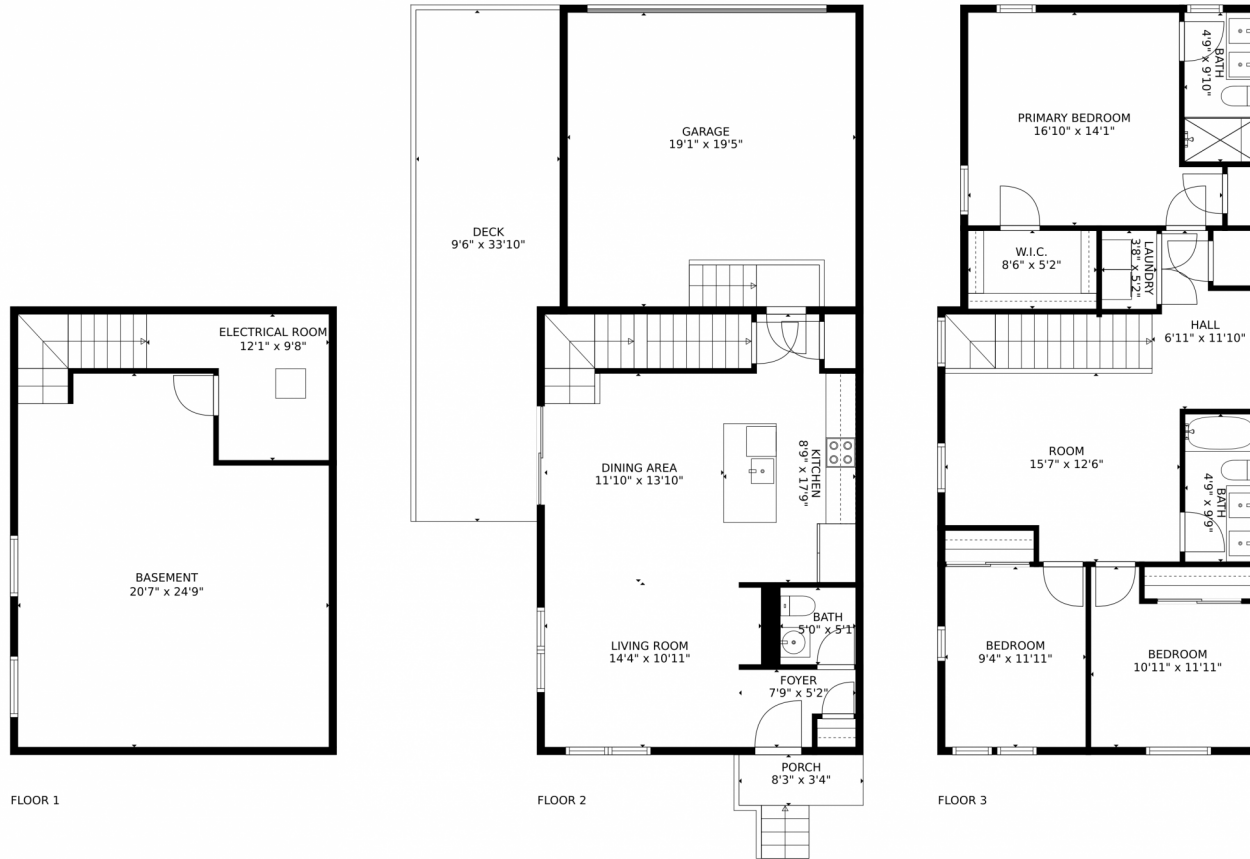
Disclaimer: Sizes and Dimensions are Approximate, Actual May Vary.



Carolyn Bleicher
303-219-1771
carolyn@carolynbleicher.com



11346 Destination Drive, Broomfield, CO 80021 – All Levels



FLOOR 1

FLOOR 2

FLOOR 3

TOTAL: 1566 sq. ft
Below Ground: 0 sq. ft, FLOOR 2: 592 sq. ft, FLOOR 3: 974 sq. ft
EXCLUDED AREAS: ELECTRICAL ROOM: 94 sq. ft, BASEMENT: 497 sq. ft, GARAGE: 372 sq. ft,
DECK: 302 sq. ft, PORCH: 39 sq. ft

MEASUREMENTS CALCULATED BY V1Photos.com ARE DEEMED HIGHLY RELIABLE BUT NOT GUARANTEED.



Disclaimer: Sizes and Dimensions are Approximate, Actual May Vary.



Carolyn Bleicher
303-219-1771
carolyn@carolynbleicher.com



Scan code
for more
property
details

