



7731 Mountain Laurel Drive
 Colorado Springs, CO 80922
 COMMUNITY: Eastview Estates

MLS # 8879173
 PRICE \$475,000



Single Family 2156 SQFT 3 Beds 3/1 Baths 2 Car 0.13 Acre

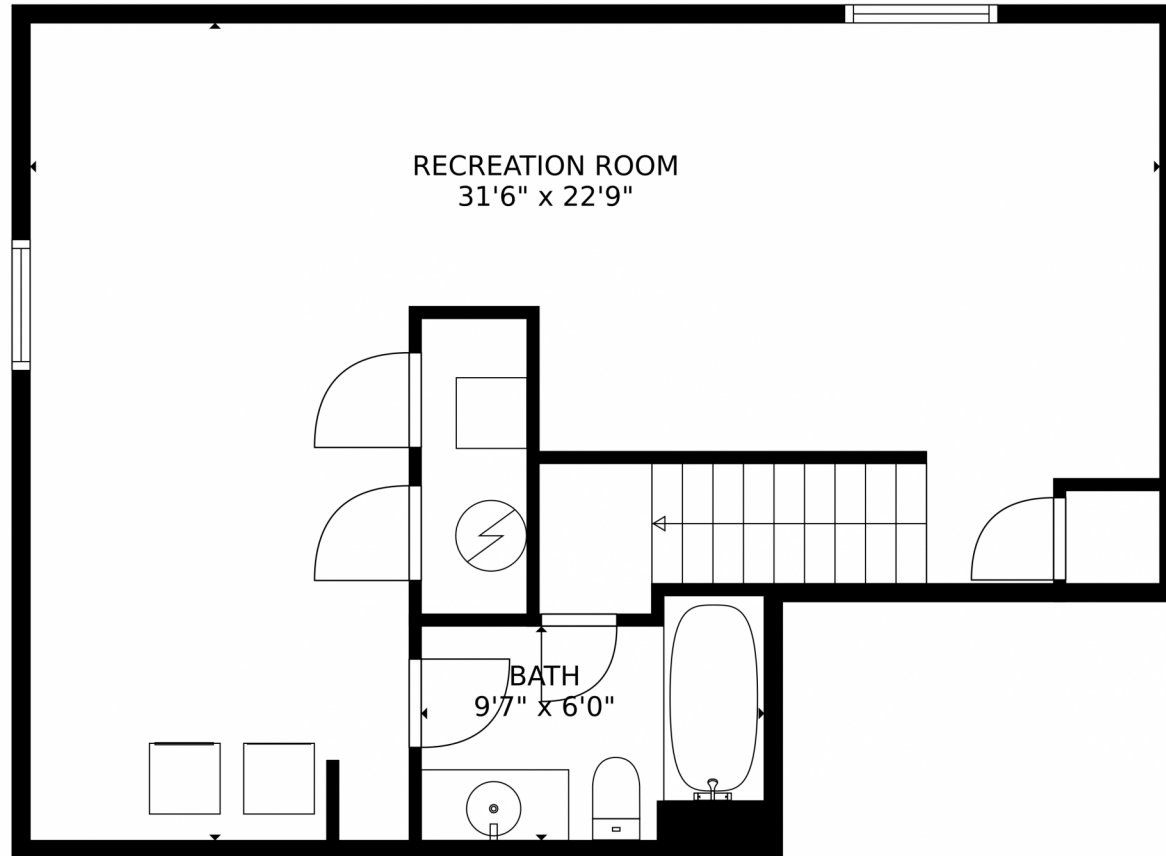
PROPERTY DETAILS

Great Location. Welcome to your new home in Eastview Estates, Colorado Springs. This 3-bedroom, 4-bathroom home offers comfort and style. The main level features an open kitchen with a breakfast bar, perfect for dining and entertaining. Enjoy mountain views from the back porch. The primary bedroom has a walk-in closet and private bathroom. The basement has heated floors and can be used as a bedroom, home gym, or office. There is also a laundry area and full bath. Experience the best of Eastview Estates living in this stunning home.



Amy J Garcia
 719-216-8224
 ajgarciaarea@gmail.com





TOTAL: 2054 sq. ft
Below Ground: 638 sq. ft, FLOOR 2: 669 sq. ft, FLOOR 3: 747 sq. ft
EXCLUDED AREAS: GARAGE: 411 sq. ft, OPEN TO BELOW: 222 sq. ft
MEASUREMENTS CALCULATED BY V1Photos.com ARE DEEMED HIGHLY RELIABLE BUT NOT GUARANTEED.

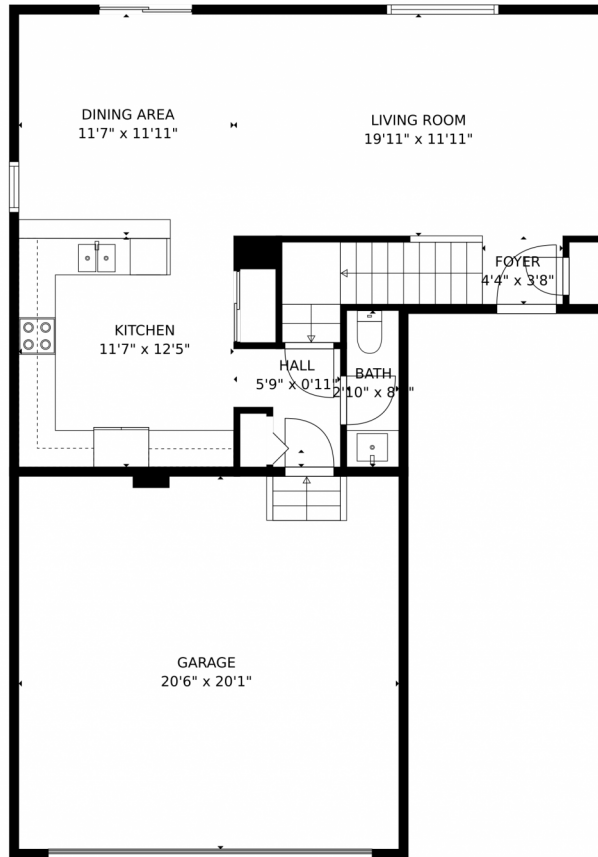


Disclaimer: Sizes and Dimensions are Approximate, Actual May Vary.



Amy J Garcia
719-216-8224
ajgarciaarea@gmail.com





TOTAL: 2054 sq. ft
Below Ground: 638 sq. ft, FLOOR 2: 669 sq. ft, FLOOR 3: 747 sq. ft
EXCLUDED AREAS: GARAGE: 411 sq. ft, OPEN TO BELOW: 222 sq. ft
MEASUREMENTS CALCULATED BY V1Photos.com ARE DEEMED HIGHLY RELIABLE BUT NOT GUARANTEED.

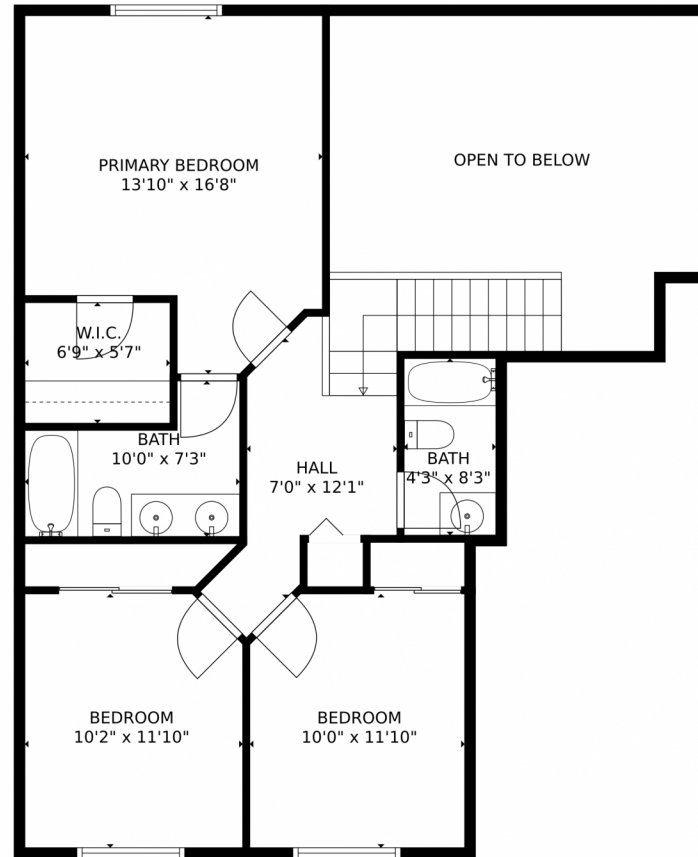


Disclaimer: Sizes and Dimensions are Approximate, Actual May Vary.



Amy J Garcia
719-216-8224
ajgarciaarea@gmail.com





TOTAL: 2054 sq. ft
Below Ground: 638 sq. ft, FLOOR 2: 669 sq. ft, FLOOR 3: 747 sq. ft
EXCLUDED AREAS: GARAGE: 411 sq. ft, OPEN TO BELOW: 222 sq. ft
MEASUREMENTS CALCULATED BY V1Photos.com ARE DEEMED HIGHLY RELIABLE BUT NOT GUARANTEED.



Disclaimer: Sizes and Dimensions are Approximate, Actual May Vary.



Amy J Garcia
719-216-8224
ajgarciaarea@gmail.com



7731 Mountain Laurel Drive, Colorado Springs, CO 80922 — floorplan_all_0



TOTAL: 2054 sq. ft
Below Ground: 638 sq. ft, FLOOR 2: 669 sq. ft, FLOOR 3: 747 sq. ft
EXCLUDED AREAS: GARAGE: 411 sq. ft, OPEN TO BELOW: 222 sq. ft
MEASUREMENTS CALCULATED BY V1Photos.com ARE DEEMED HIGHLY RELIABLE BUT NOT GUARANTEED.



Disclaimer: Sizes and Dimensions are Approximate, Actual May Vary.



Amy J Garcia
719-216-8224
ajgarciaarea@gmail.com

