

12987 Hillcrest Drive
Longmont, CO 80504



Single Family



5211 SQFT



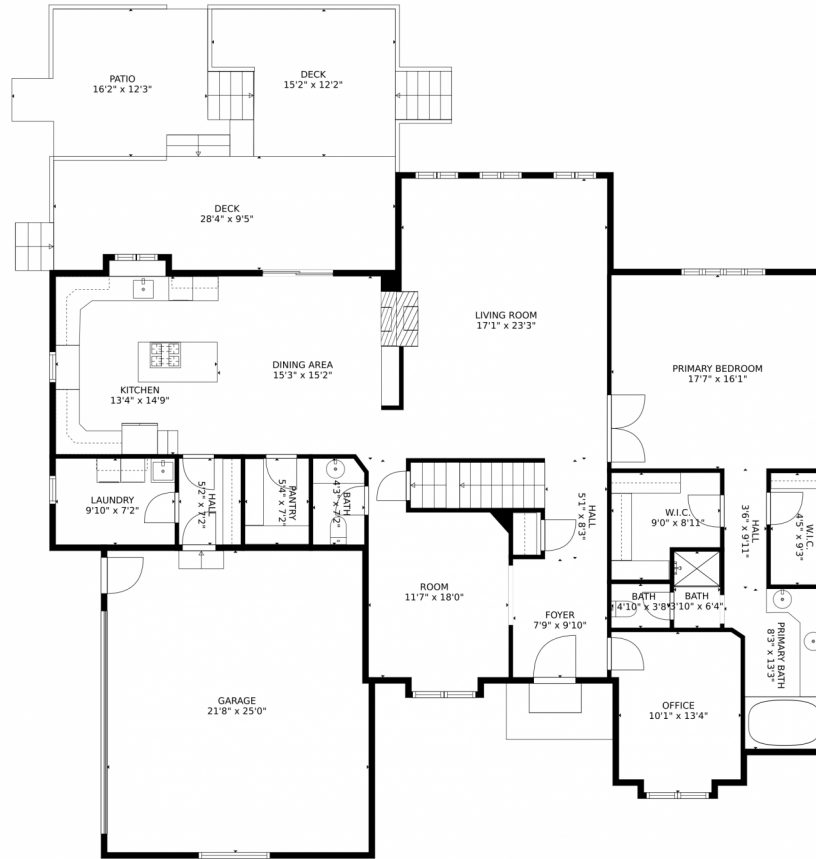
Jo Klimecki
720-249-7453
jodi@ccpnoco.com



Scan code
for more
property
details



12987 Hillcrest Drive, Longmont, CO 80504 – Main Level



TOTAL: 4158 sq. ft
BELOW GROUND: 0 sq. ft, BELOW GROUND: 978 sq. ft, FLOOR 3: 2120 sq. ft, FLOOR 4: 1060 sq. ft
EXCLUDED AREAS: GARAGE: 1386 sq. ft, ROOM: 31 sq. ft, ELECTRICAL ROOM: 43 sq. ft,
UTILITY: 350 sq. ft, STORAGE: 131 sq. ft, PATIO: 195 sq. ft,
DECK: 422 sq. ft

MEASUREMENTS CALCULATED BY V1Photos.com ARE DEEMED HIGHLY RELIABLE BUT NOT GUARANTEED.



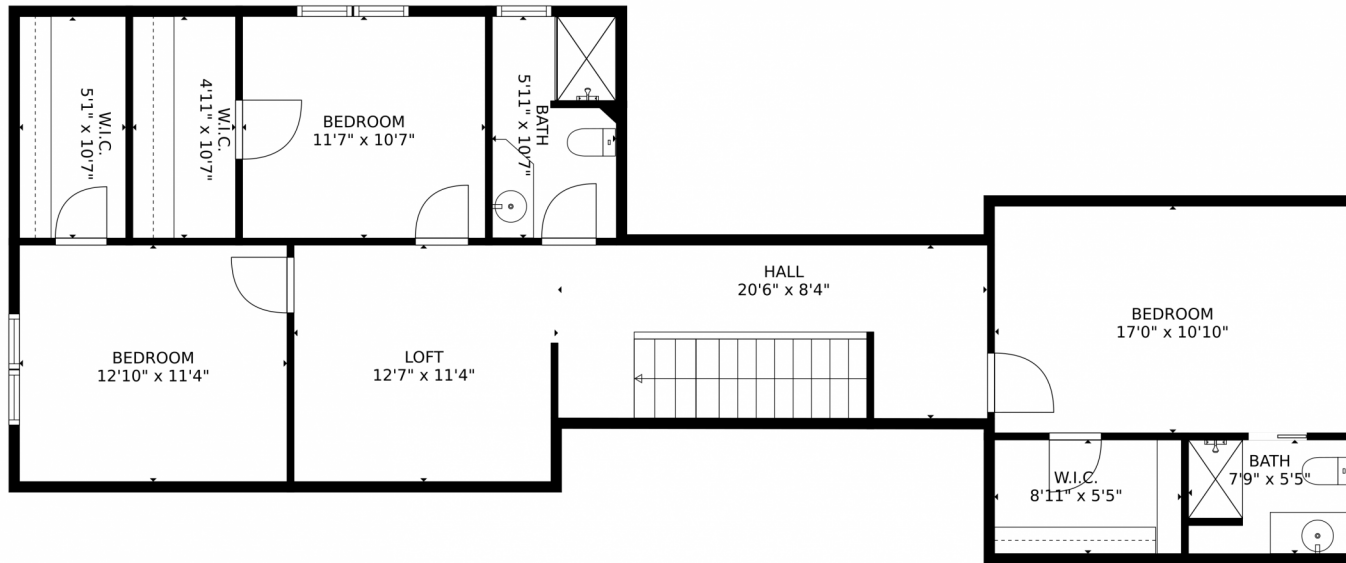
Disclaimer: Sizes and Dimensions are Approximate, Actual May Vary.



Jo Klimecki
720-249-7453
jodi@ccpnoco.com



12987 Hillcrest Drive, Longmont, CO 80504 – Upper Level



TOTAL: 4158 sq. ft
BELOW GROUND: 0 sq. ft, BELOW GROUND: 978 sq. ft, FLOOR 3: 2120 sq. ft, FLOOR 4: 1060 sq. ft
EXCLUDED AREAS: GARAGE: 1386 sq. ft, ROOM: 31 sq. ft, ELECTRICAL ROOM: 43 sq. ft,
UTILITY: 350 sq. ft, STORAGE: 131 sq. ft, PATIO: 195 sq. ft,
DECK: 422 sq. ft

MEASUREMENTS CALCULATED BY V1Photos.com ARE DEEMED HIGHLY RELIABLE BUT NOT GUARANTEED.



Disclaimer: Sizes and Dimensions are Approximate, Actual May Vary.



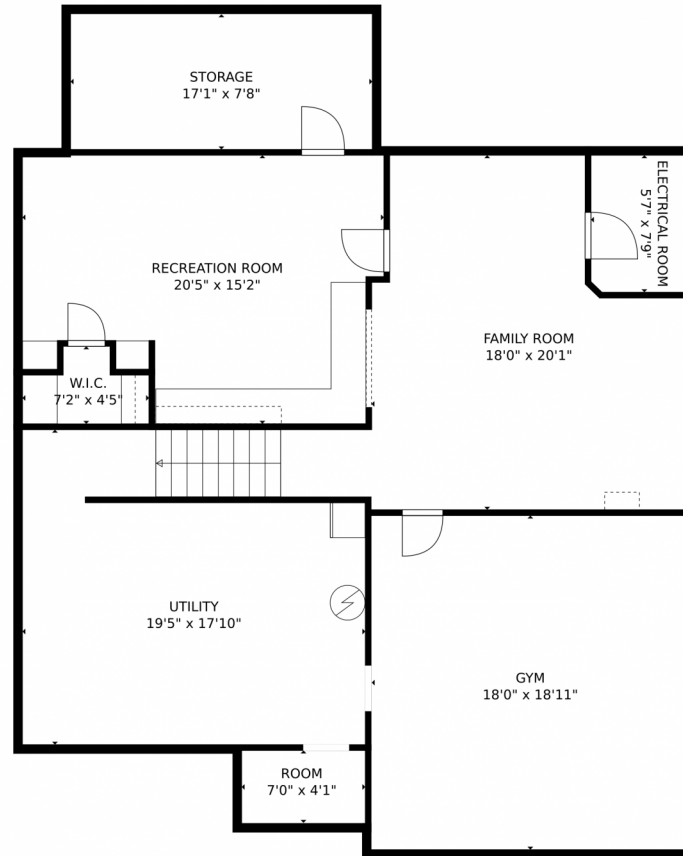
Jo Klimecki
720-249-7453
jodi@ccpnoco.com



Scan code
for more
property
details



12987 Hillcrest Drive, Longmont, CO 80504 – Lower Level



TOTAL: 4158 sq. ft
BELOW GROUND: 0 sq. ft, BELOW GROUND: 978 sq. ft, FLOOR 3: 2120 sq. ft, FLOOR 4: 1060 sq. ft
EXCLUDED AREAS: GARAGE: 1386 sq. ft, ROOM: 31 sq. ft, ELECTRICAL ROOM: 43 sq. ft,
UTILITY: 350 sq. ft, STORAGE: 131 sq. ft, PATIO: 195 sq. ft,
DECK: 422 sq. ft

MEASUREMENTS CALCULATED BY V1Photos.com ARE DEEMED HIGHLY RELIABLE BUT NOT GUARANTEED.

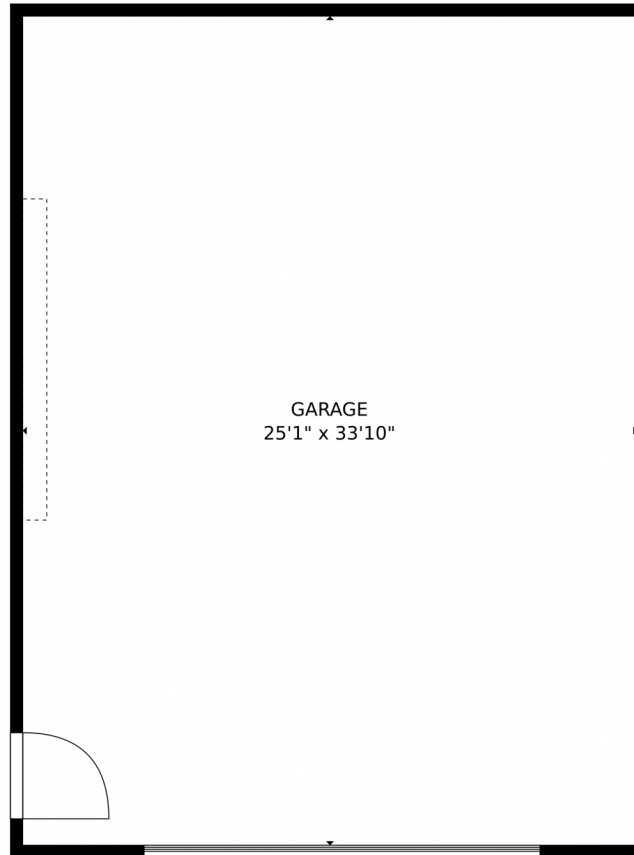


Disclaimer: Sizes and Dimensions are Approximate, Actual May Vary.



Jo Klimecki
720-249-7453
jodi@ccpnoco.com





TOTAL: 4158 sq. ft
BELOW GROUND: 0 sq. ft, BELOW GROUND: 978 sq. ft, FLOOR 3: 2120 sq. ft, FLOOR 4: 1060 sq. ft
EXCLUDED AREAS: GARAGE: 1386 sq. ft, ROOM: 31 sq. ft, ELECTRICAL ROOM: 43 sq. ft,
UTILITY: 350 sq. ft, STORAGE: 131 sq. ft, PATIO: 195 sq. ft,
DECK: 422 sq. ft

MEASUREMENTS CALCULATED BY V1Photos.com ARE DEEMED HIGHLY RELIABLE BUT NOT GUARANTEED.



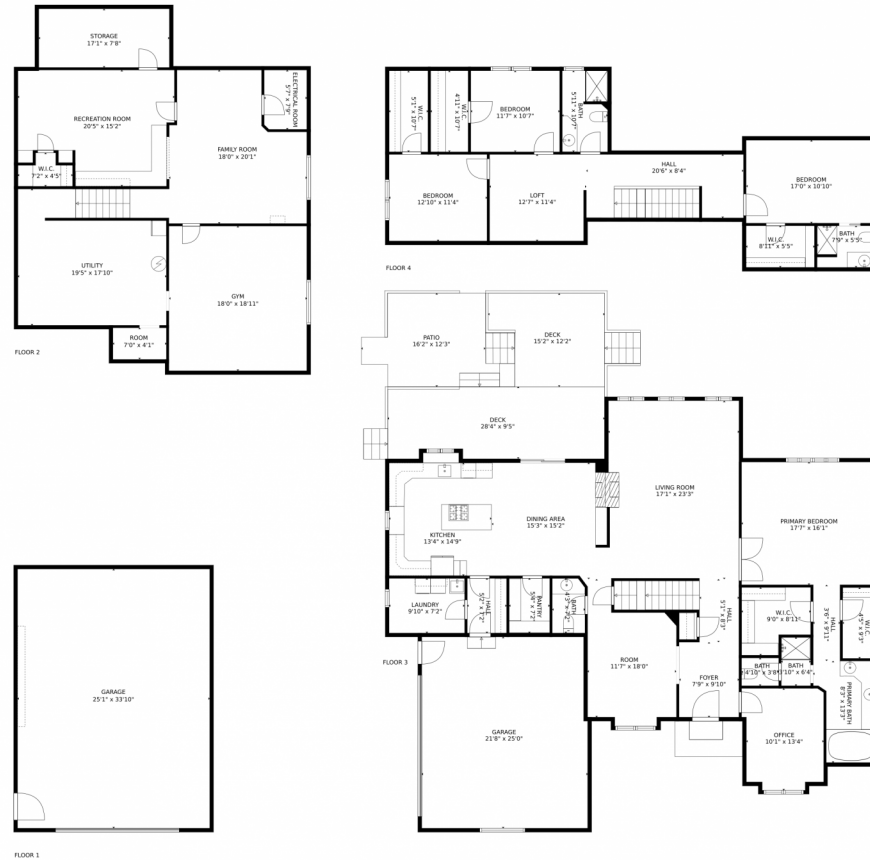
Disclaimer: Sizes and Dimensions are Approximate, Actual May Vary.



Jo Klimecki
720-249-7453
jodi@ccpnoco.com



12987 Hillcrest Drive, Longmont, CO 80504 – All Levels



TOTAL: 4158 sq. ft
 BELOW GROUND: 0 sq. ft, BELOW GROUND: 978 sq. ft, FLOOR 3: 2120 sq. ft, FLOOR 4: 1060 sq. ft
 EXCLUDED AREAS: GARAGE: 1386 sq. ft, ROOM: 31 sq. ft, ELECTRICAL ROOM: 43 sq. ft,
 UTILITY: 350 sq. ft, STORAGE: 131 sq. ft, PATIO: 195 sq. ft,
 DECK: 422 sq. ft

MEASUREMENTS CALCULATED BY V1Photos.COM ARE DEEMED HIGHLY RELIABLE BUT NOT GUARANTEED.



Disclaimer: Sizes and Dimensions are Approximate, Actual May Vary.



Jo Klimecki
 720-249-7453
 jodi@ccpnoco.com



Scan code
 for more
 property
 details

