



Buy | Sell | Build | Develop | Consult

1283 Newport Street
Denver, CO 80220
COMMUNITY: Montclair

MLS # 5332371
PRICE \$740,000



Single Family



2243 SQFT



4 Beds



2 Baths



2 Car



0.15 Acre

PROPERTY DETAILS

Welcome to this beautiful Tudor-style home in Montclair, Denver. This 4-bed, 2-bath residence seamlessly blends charm with modern upgrades. Key features include a newly remodeled kitchen, original wood floors, finished basement with separate entrance, detached 2-car garage, and a fully fenced yard. Located in the desirable Montclair neighborhood, close to parks, shops, and top-rated schools. Don't miss out on this stunning property!



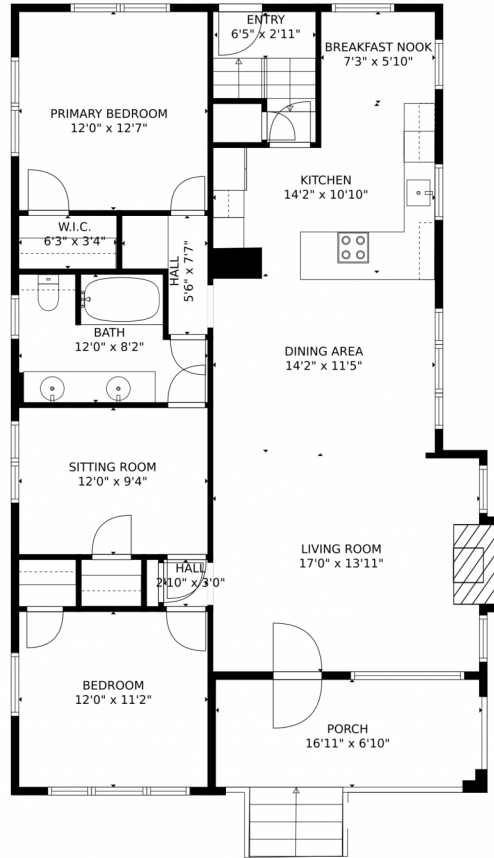
Ryan VanVoorhis
720-892-5156
ryan@teamlivecolorado.com



Scan code
for more
property
details



1283 Newport Street, Denver, CO 80220 – Main Level



TOTAL: 2039 sq. ft
BELOW GROUND: 794 sq. ft, FLOOR 2: 1245 sq. ft
EXCLUDED AREAS: GARAGE: 381 sq. ft, LOW CEILING: 383 sq. ft, ELECTRICAL ROOM: 48 sq. ft,
PATIO: 298 sq. ft, FIREPLACE: 19 sq. ft, PORCH: 148 sq. ft
MEASUREMENTS CALCULATED BY V1Photos.com ARE DEEMED HIGHLY RELIABLE BUT NOT GUARANTEED.



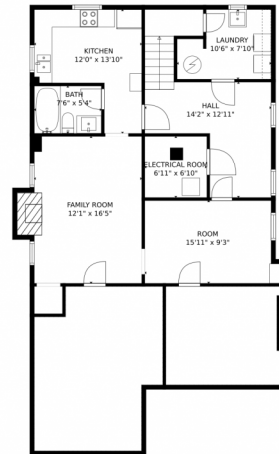
Disclaimer: Sizes and Dimensions are Approximate, Actual May Vary.



Ryan VanVoorhis
720-892-5156
ryan@teamlivecolorado.com



1283 Newport Street, Denver, CO 80220 – Lower Level



TOTAL: 2039 sq. ft
BELOW GROUND: 794 sq. ft, FLOOR 2: 1245 sq. ft
EXCLUDED AREAS: GARAGE: 381 sq. ft, LOW CEILING: 383 sq. ft, ELECTRICAL ROOM: 48 sq. ft,
PATIO: 298 sq. ft, FIREPLACE: 19 sq. ft, PORCH: 148 sq. ft

MEASUREMENTS CALCULATED BY V1Photos.com ARE DEEMED HIGHLY RELIABLE BUT NOT GUARANTEED.



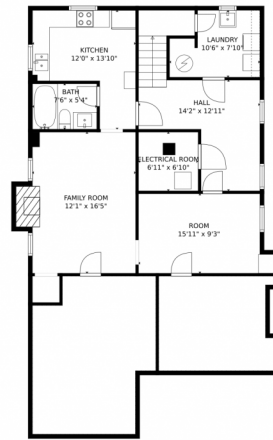
Disclaimer: Sizes and Dimensions are Approximate, Actual May Vary.



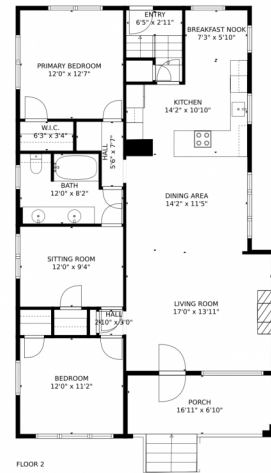
Ryan VanVoorhis
720-892-5156
ryan@teamlivecolorado.com



1283 Newport Street, Denver, CO 80220 – All Levels



FLOOR 1



FLOOR 2

TOTAL: 2039 sq. ft
BELOW GROUND: 794 sq. ft, FLOOR 2: 1245 sq. ft
EXCLUDED AREAS: GARAGE: 381 sq. ft, LOW CEILING: 383 sq. ft, ELECTRICAL ROOM: 48 sq. ft,
PATIO: 298 sq. ft, FIREPLACE: 19 sq. ft, PORCH: 148 sq. ft

MEASUREMENTS CALCULATED BY V1Photos.COM ARE DEEMED HIGHLY RELIABLE BUT NOT GUARANTEED.



Disclaimer: Sizes and Dimensions are Approximate, Actual May Vary.



Ryan VanVoorhis
720-892-5156
ryan@teamlivecolorado.com

