

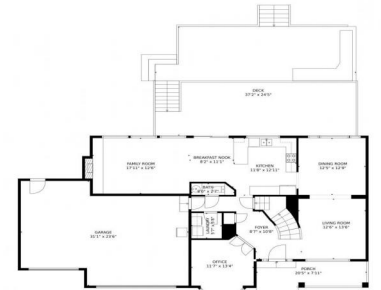


907 E Karval Place
Superior, CO 80027
COMMUNITY: Rock Creek

MLS # IR1013841
PRICE \$1,190,000



907 E Karval Place, Superior, CO 80027 - floorplan_single_1



Single Family 3591 SQFT 4 Beds 3/1 Baths 3 Car 0.3 Acre

PROPERTY DETAILS

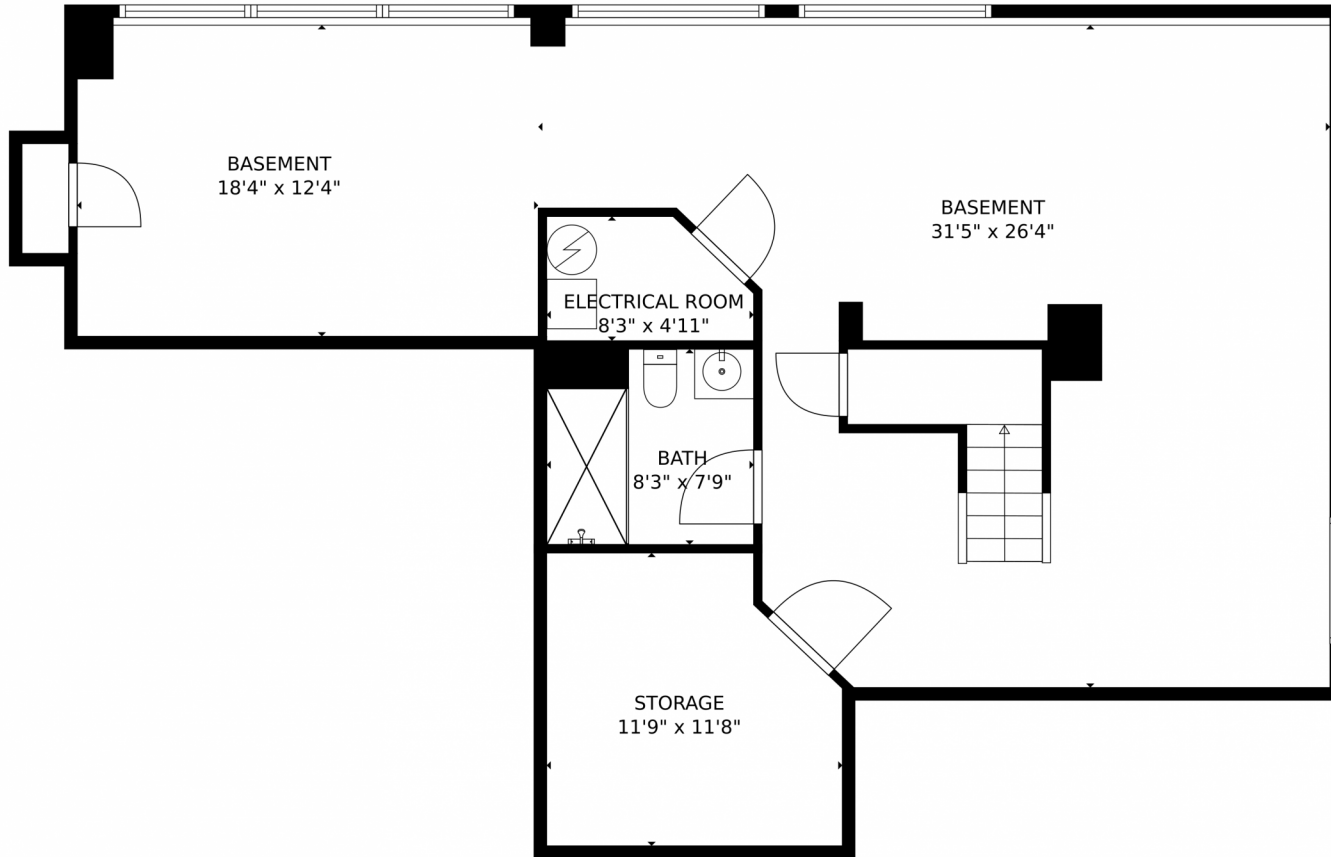
Beautiful sunlit home in Superior with mountain views from the new 2 tier deck. 4 bedrooms, office, skylights, stainless steel appliances, finished basement, and oversized 3 car garage. Expansive backyard with mature trees. Don't miss out! 2.5% Agent Co-op Fee.



Amanda Khoury
312-498-3835
amandakhoury@mylokation.com



907 E Karval Place, Superior, CO 80027 – Lower Level



TOTAL: 3190 sq. ft
BELOW GROUND: 988 sq. ft, FLOOR 2: 1191 sq. ft, FLOOR 3: 1011 sq. ft
EXCLUDED AREAS: STORAGE: 123 sq. ft, ELECTRICAL ROOM: 36 sq. ft, GARAGE: 619 sq. ft,
PORCH: 138 sq. ft, DECK: 873 sq. ft, FIREPLACE: 8 sq. ft,
OPEN TO BELOW: 67 sq. ft

MEASUREMENTS CALCULATED BY V1Photos.com ARE DEEMED HIGHLY RELIABLE BUT NOT GUARANTEED.



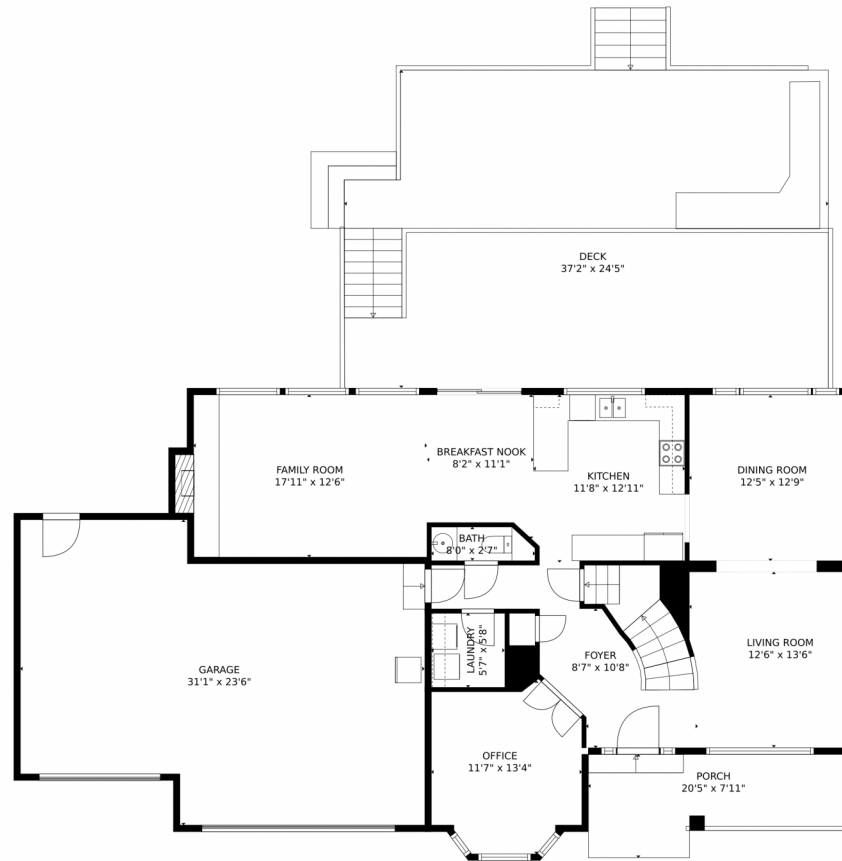
Disclaimer: Sizes and Dimensions are Approximate, Actual May Vary.



Amanda Khoury
312-498-3835
amandakhoury@mylokation.com



907 E Karval Place, Superior, CO 80027 – Main Level



TOTAL: 3190 sq. ft
BELOW GROUND: 988 sq. ft, FLOOR 2: 1191 sq. ft, FLOOR 3: 1011 sq. ft
EXCLUDED AREAS: STORAGE: 123 sq. ft, ELECTRICAL ROOM: 36 sq. ft, GARAGE: 619 sq. ft,
PORCH: 138 sq. ft, DECK: 873 sq. ft, FIREPLACE: 8 sq. ft,
OPEN TO BELOW: 67 sq. ft

MEASUREMENTS CALCULATED BY V1Photos.com ARE DEEMED HIGHLY RELIABLE BUT NOT GUARANTEED.



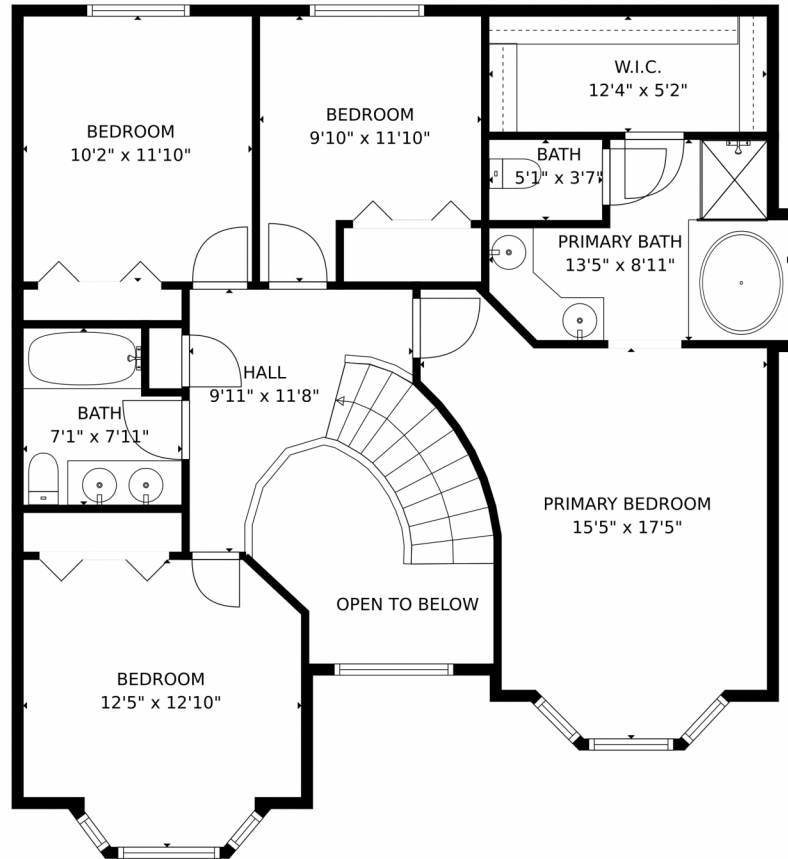
Disclaimer: Sizes and Dimensions are Approximate, Actual May Vary.



Amanda Khoury
312-498-3835
amandakhoury@mylokation.com



907 E Karval Place, Superior, CO 80027 – Upper Level



TOTAL: 3190 sq. ft
BELOW GROUND: 988 sq. ft, FLOOR 2: 1191 sq. ft, FLOOR 3: 1011 sq. ft
EXCLUDED AREAS: STORAGE: 123 sq. ft, ELECTRICAL ROOM: 36 sq. ft, GARAGE: 619 sq. ft,
PORCH: 138 sq. ft, DECK: 873 sq. ft, FIREPLACE: 8 sq. ft,
OPEN TO BELOW: 67 sq. ft

MEASUREMENTS CALCULATED BY V1Photos.com ARE DEEMED HIGHLY RELIABLE BUT NOT GUARANTEED.



Disclaimer: Sizes and Dimensions are Approximate, Actual May Vary.



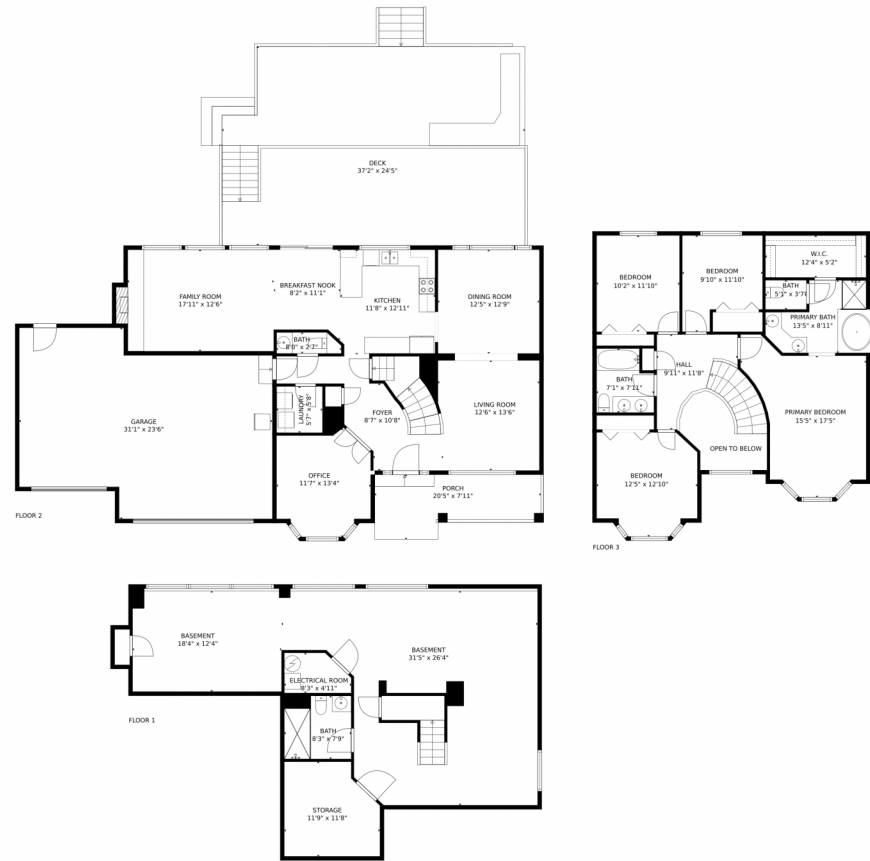
Amanda Khoury
312-498-3835
amandakhoury@mylokation.com



Scan code
for more
property
details



907 E Karval Place, Superior, CO 80027 – All Levels



TOTAL: 3190 sq. ft
BELOW GROUND: 988 sq. ft, FLOOR 2: 1191 sq. ft, FLOOR 3: 1011 sq. ft
EXCLUDED AREAS: STORAGE: 123 sq. ft, ELECTRICAL ROOM: 36 sq. ft, GARAGE: 619 sq. ft,
PORCH: 138 sq. ft, DECK: 873 sq. ft, FIREPLACE: 8 sq. ft,
OPEN TO BELOW: 67 sq. ft

MEASUREMENTS CALCULATED BY V1Photos.com ARE DEEMED HIGHLY RELIABLE BUT NOT GUARANTEED.



Disclaimer: Sizes and Dimensions are Approximate, Actual May Vary.



Amanda Khoury
312-498-3835
amandakhoury@mylokation.com



Scan code
for more
property
details

