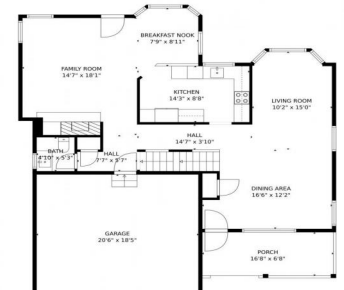




12947 South Molly Court, Parker, CO 80134 - main level



Single Family
 2774 SQFT
 4 Beds
 2/1 Baths
 2 Car
 0.11 Acre

PROPERTY DETAILS

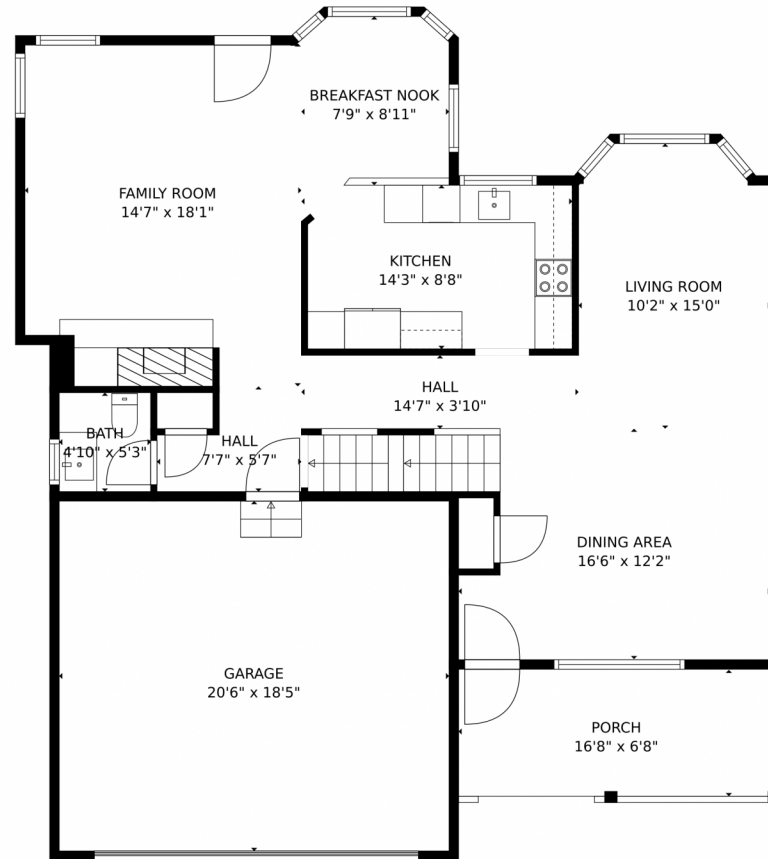
Welcome to this meticulously maintained 4-bedroom, 2.5-bathroom home in the sought-after Stroh Ranch community. The open floor plan and top-of-the-line kitchen appliances make it perfect for entertaining. The spacious bedrooms offer a private retreat, and the tranquil backyard oasis is surrounded by mature trees. Enjoy the convenience of nearby shops and restaurants, and embrace the Colorado lifestyle with scenic walking paths, a community pool, and tennis courts. Live a carefree lifestyle in this close-knit community with low HOA fees.



Sean Ready
303-331-4190
sean@readygroupkw.com



12947 South Molly Court, Parker, CO 80134 – main level



TOTAL: 2386 sq. ft
BELOW GROUND: 882 sq. ft, FLOOR 2: 741 sq. ft, FLOOR 3: 763 sq. ft
EXCLUDED AREAS: LOW CEILING: 216 sq. ft, GARAGE: 379 sq. ft, PORCH: 111 sq. ft,
OPEN TO BELOW: 35 sq. ft

MEASUREMENTS CALCULATED BY V1Photos.com ARE DEEMED HIGHLY RELIABLE BUT NOT GUARANTEED.



Disclaimer: Sizes and Dimensions are Approximate, Actual May Vary.



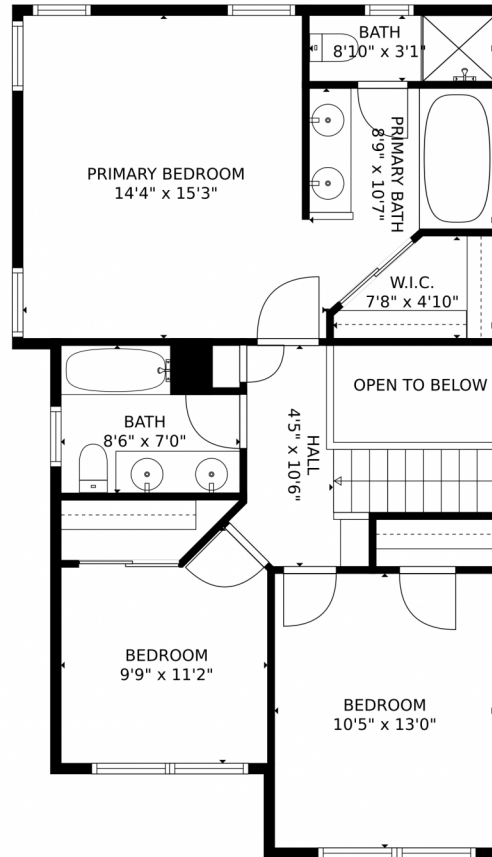
Sean Ready
303-331-4190
sean@readygroupkw.com



Scan code
for more
property
details



12947 South Molly Court, Parker, CO 80134 – upper level



TOTAL: 2386 sq. ft
BELOW GROUND: 882 sq. ft, FLOOR 2: 741 sq. ft, FLOOR 3: 763 sq. ft
EXCLUDED AREAS: LOW CEILING: 216 sq. ft, GARAGE: 379 sq. ft, PORCH: 111 sq. ft,
OPEN TO BELOW: 35 sq. ft
MEASUREMENTS CALCULATED BY V1Photos.COM ARE DEEMED HIGHLY RELIABLE BUT NOT GUARANTEED.



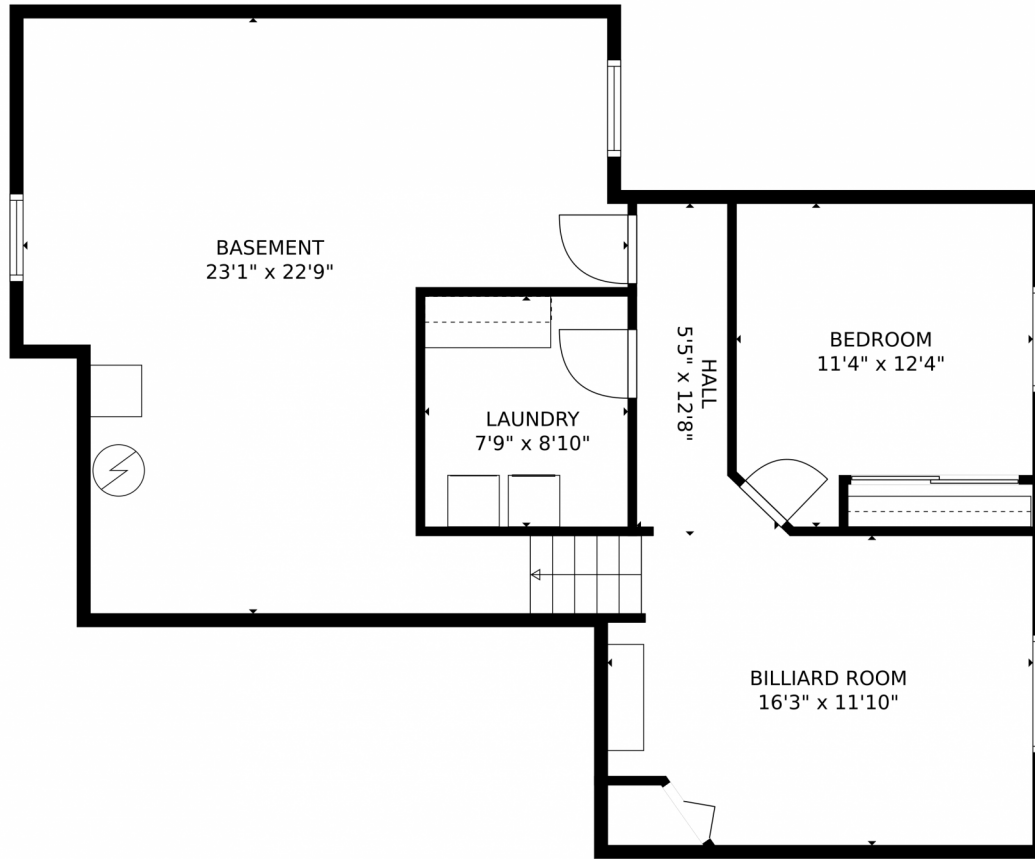
Disclaimer: Sizes and Dimensions are Approximate, Actual May Vary.



Sean Ready
303-331-4190
sean@readygroupkw.com



12947 South Molly Court, Parker, CO 80134 – lower level



TOTAL: 2386 sq. ft
BELOW GROUND: 882 sq. ft, FLOOR 2: 741 sq. ft, FLOOR 3: 763 sq. ft
EXCLUDED AREAS: LOW CEILING: 216 sq. ft, GARAGE: 379 sq. ft, PORCH: 111 sq. ft,
OPEN TO BELOW: 35 sq. ft
MEASUREMENTS CALCULATED BY V1Photos.com ARE DEEMED HIGHLY RELIABLE BUT NOT GUARANTEED.

Disclaimer: Sizes and Dimensions are Approximate, Actual May Vary.



Sean Ready
303-331-4190
sean@readygroupkw.com



Scan code
for more
property
details

12947 South Molly Court, Parker, CO 80134 – all levels



TOTAL: 2386 sq. ft
BELOW GROUND: 882 sq. ft, FLOOR 2: 741 sq. ft, FLOOR 3: 763 sq. ft
EXCLUDED AREAS: LOW CEILING: 216 sq. ft, GARAGE: 379 sq. ft, PORCH: 111 sq. ft,
OPEN TO BELOW: 35 sq. ft

MEASUREMENTS CALCULATED BY V1Photos.com ARE DEEMED HIGHLY RELIABLE BUT NOT GUARANTEED.



Disclaimer: Sizes and Dimensions are Approximate, Actual May Vary.



Sean Ready
303-331-4190
sean@readygroupkw.com

