



920 Arapahoe Court
 Louisville, CO 80027
 COMMUNITY: Centennial 8

Incredible Mountain Views!



Single Family



3816 SQFT



6 Beds



5 Baths



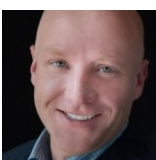
3 Car



0.18 Acre

PROPERTY DETAILS

Custom Home By Wood Brothers Homes and designed by Godden/Sudik architects. Incredible mountain views from primary bedroom and kitchen. Move-in ready by end of July. Marvin Black Fiber glass windows, Delta Trinsic Collection plumbing trims, custom lighting by Fusion light and design, soft close cabinetry, waterfall quartz countertops, Monogram appliances. Oversized 3 car garage, 2 laundry room hookups, 6 bedrooms and 5 baths. Large wrap around deck with mountain views. Cul de sac location backing to city open space trail. Primary bathroom with heated floors and soaking tub. 400-amp panel, 2 electric heat pumps, 80-gal hybrid electric water heater and EV charger ready garage.



Dave Abel
 303-725-0461
 daveabel@boulderco.com



Scan code
 for more
 property
 details

