




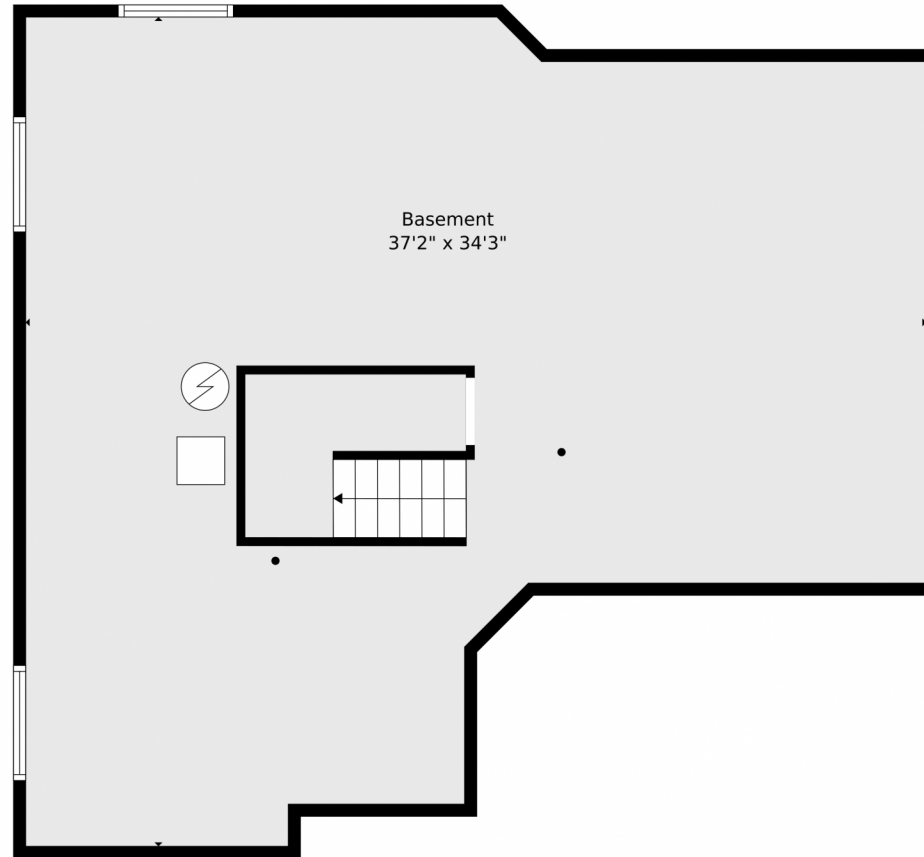
 Single Family  3427 SQFT  3 Beds  2/1 Baths  2 Car  0.12 Acre



Ginny Kamin
303-884-0952
GKSellingColorado@gmail.com



15215 Chelmsford Street, Colorado Springs, CO 80921 – Lower Level



TOTAL: 2033 sq. ft
Below Ground: 0 sq. ft, FLOOR 2: 975 sq. ft, FLOOR 3: 1058 sq. ft
EXCLUDED AREAS: BASEMENT: 1025 sq. ft, GARAGE: 366 sq. ft, LOW CEILING: 85 sq. ft,
PORCH: 77 sq. ft, PATIO: 98 sq. ft, FIREPLACE: 15 sq. ft,
OPEN TO BELOW: 289 sq. ft

Floor Plan Created By V1photos.com, Measurements Deamed Highly Reliable But Not Guaranteed.



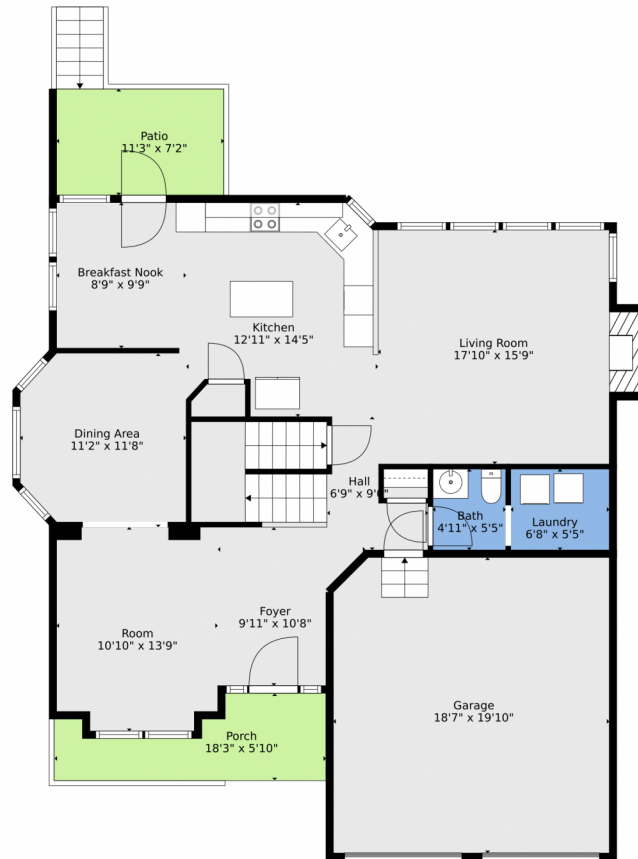
Disclaimer: Sizes and Dimensions are Approximate, Actual May Vary.



Ginny Kamin
303-884-0952
GKSellingColorado@gmail.com



15215 Chelmsford Street, Colorado Springs, CO 80921 – Main Level



TOTAL: 2033 sq. ft
Below Ground: 0 sq. ft, FLOOR 2: 975 sq. ft, FLOOR 3: 1058 sq. ft
EXCLUDED AREAS: BASEMENT: 1025 sq. ft, GARAGE: 366 sq. ft, LOW CEILING: 85 sq. ft,
PORCH: 77 sq. ft, PATIO: 98 sq. ft, FIREPLACE: 15 sq. ft,
OPEN TO BELOW: 289 sq. ft

Floor Plan Created By V1photos.com, Measurements Deamed Highly Reliable But Not Guaranteed.



Disclaimer: Sizes and Dimensions are Approximate, Actual May Vary.



Ginny Kamin
303-884-0952
GKSellingColorado@gmail.com



Scan code
for more
property
details



15215 Chelmsford Street, Colorado Springs, CO 80921 – Upper Level



TOTAL: 2033 sq. ft
Below Ground: 0 sq. ft, FLOOR 2: 975 sq. ft, FLOOR 3: 1058 sq. ft
EXCLUDED AREAS: BASEMENT: 1025 sq. ft, GARAGE: 366 sq. ft, LOW CEILING: 85 sq. ft,
PORCH: 77 sq. ft, PATIO: 98 sq. ft, FIREPLACE: 15 sq. ft,
OPEN TO BELOW: 289 sq. ft

Floor Plan Created By V1photos.com, Measurements Deamed Highly Reliable But Not Guaranteed.



Disclaimer: Sizes and Dimensions are Approximate, Actual May Vary.



Ginny Kamin
303-884-0952
GKSellingColorado@gmail.com



Scan code
for more
property
details

15215 Chelmsford Street, Colorado Springs, CO 80921 – All Levels



TOTAL: 2033 sq. ft
Below Ground: 0 sq. ft, FLOOR 2: 975 sq. ft, FLOOR 3: 1058 sq. ft
EXCLUDED AREAS: BASEMENT: 1025 sq. ft, GARAGE: 366 sq. ft, LOW CEILING: 85 sq. ft,
PORCH: 77 sq. ft, PATIO: 98 sq. ft, FIREPLACE: 15 sq. ft,
OPEN TO BELOW: 289 sq. ft

Floor Plan Created By V1photos.com, Measurements Deamed Highly Reliable But Not Guaranteed.



Disclaimer: Sizes and Dimensions are Approximate, Actual May Vary.



Ginny Kamin
303-884-0952
GKSellingColorado@gmail.com



Scan code
for more
property
details