

Single Family



3601 SQFT



4 Beds



4/1 Baths



3 Car



0.18 Acre



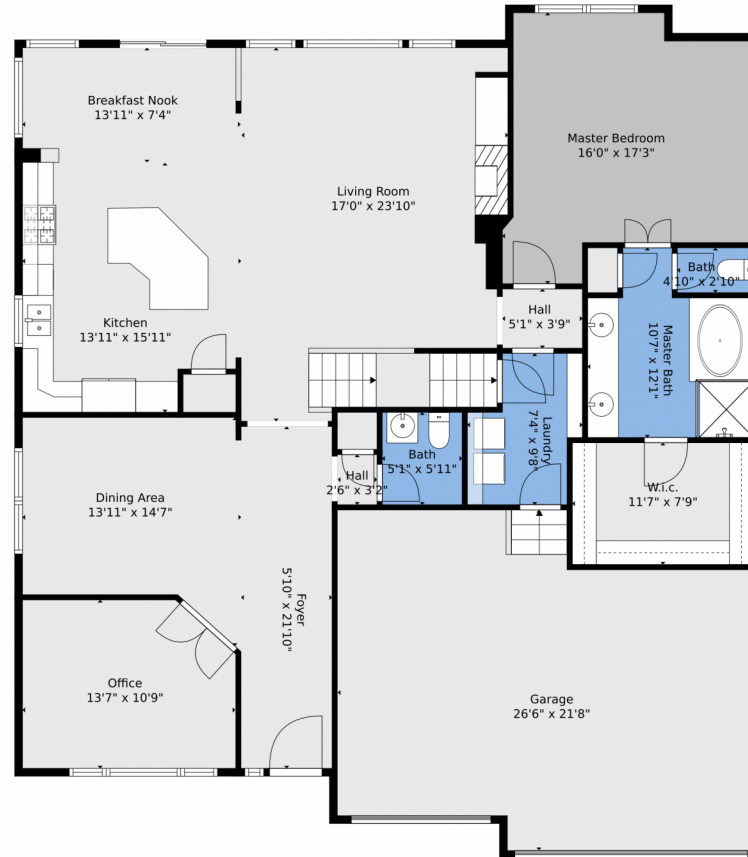
Kristin Frasier
303-587-1103
kristinfrasier@kw.com



Scan code
for more
property
details



23043 Cleveland Dr, Parker, CO 80138 – main level



TOTAL: 3201 sq. ft
Below Ground: 488 sq. ft, FLOOR 2: 1761 sq. ft, FLOOR 3: 952 sq. ft
EXCLUDED AREAS: ELECTRICAL ROOM: 167 sq. ft, GARAGE: 507 sq. ft

Floor Plan Created By V1photos.com, Measurements Deamed Highly Reliable But Not Guaranteed.



Disclaimer: Sizes and Dimensions are Approximate, Actual May Vary.



Kristin Frasier
303-587-1103
kristinfrasier@kw.com



Scan code
for more
property
details



TOTAL: 3201 sq. ft
Below Ground: 488 sq. ft, FLOOR 2: 1761 sq. ft, FLOOR 3: 952 sq. ft
EXCLUDED AREAS: ELECTRICAL ROOM: 167 sq. ft, GARAGE: 507 sq. ft

Floor Plan Created By V1photos.com, Measurements Deamed Highly Reliable But Not Guaranteed.

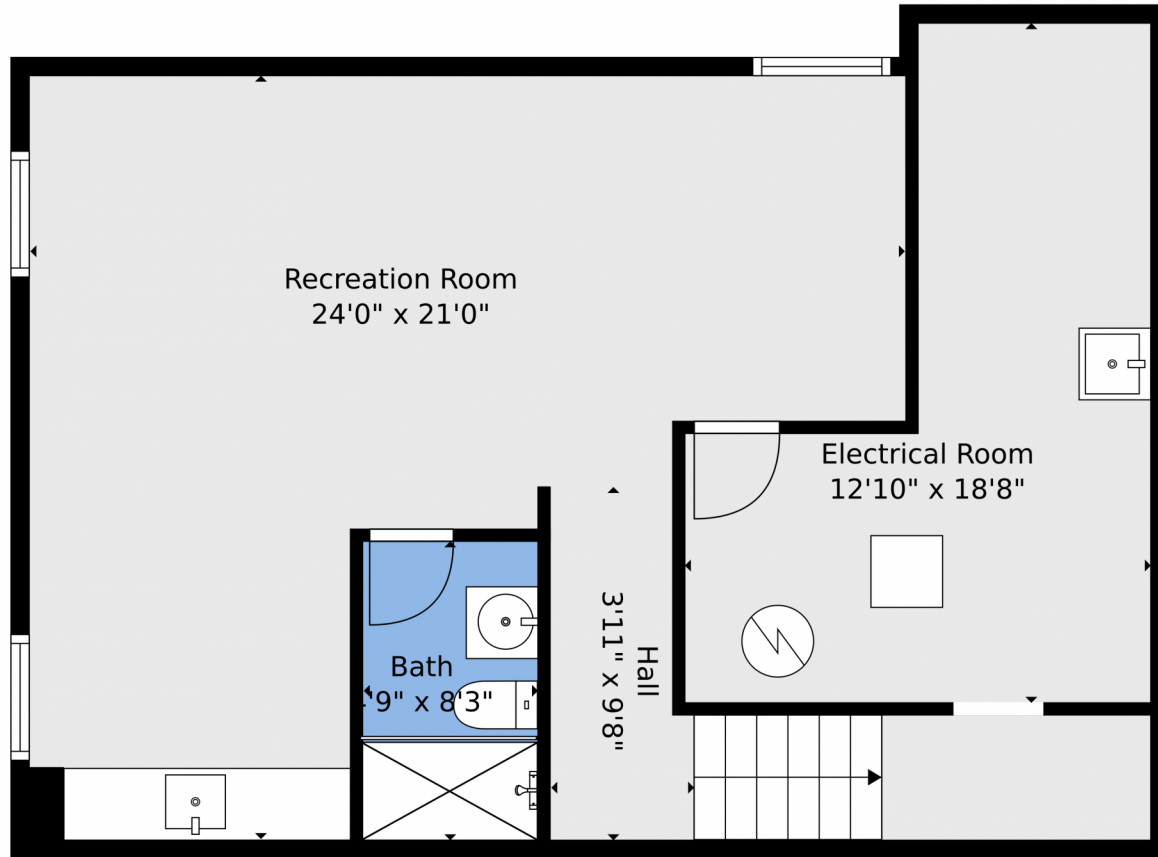


Disclaimer: Sizes and Dimensions are Approximate, Actual May Vary.



Kristin Frasier
303-587-1103
kristinfrasier@kw.com





TOTAL: 3201 sq. ft
Below Ground: 488 sq. ft, FLOOR 2: 1761 sq. ft, FLOOR 3: 952 sq. ft
EXCLUDED AREAS: ELECTRICAL ROOM: 167 sq. ft, GARAGE: 507 sq. ft
Floor Plan Created By V1photos.com, Measurements Deamed Highly Reliable But Not Guaranteed.



Disclaimer: Sizes and Dimensions are Approximate, Actual May Vary.

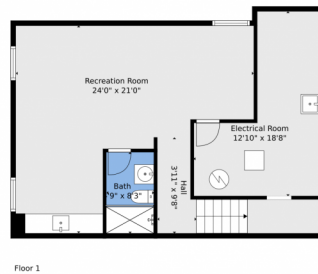
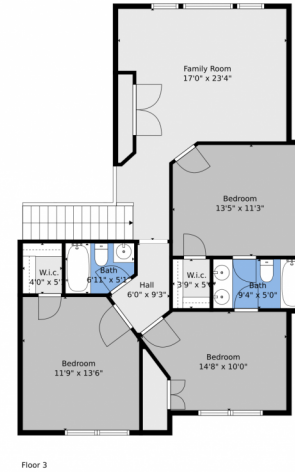
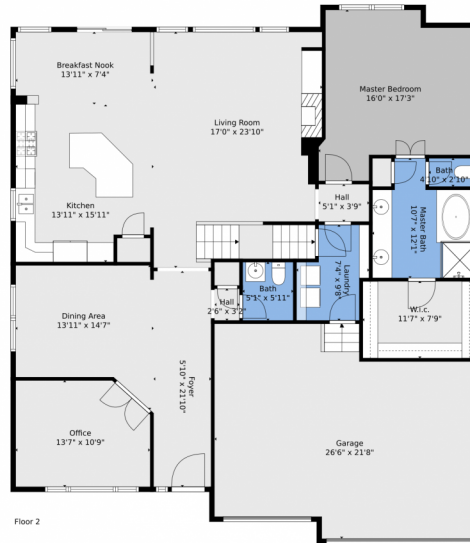


Kristin Frasier
303-587-1103
kristinfrasier@kw.com



Scan code
for more
property
details

23043 Cleveland Dr, Parker, CO 80138 – all levels



TOTAL: 3201 sq. ft
Below Ground: 488 sq. ft, FLOOR 2: 1761 sq. ft, FLOOR 3: 952 sq. ft
EXCLUDED AREAS: ELECTRICAL ROOM: 167 sq. ft, GARAGE: 507 sq. ft

Floor Plan Created By V1photos.com, Measurements Deamed Highly Reliable But Not Guaranteed.



Disclaimer: Sizes and Dimensions are Approximate, Actual May Vary.



Kristin Frasier
303-587-1103
kristinfrasier@kw.com

