




 Single Family

 1565 SQFT

 3 Beds

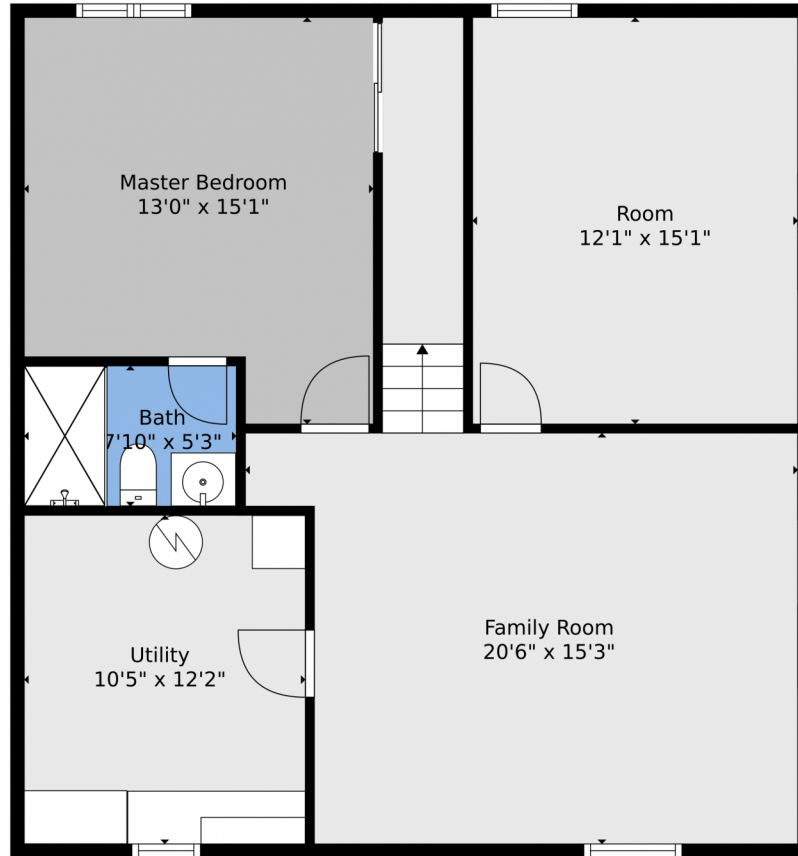
 2 Baths



**Taylor Haas**  
303-665-7368  
taylorh@coloradorpm.com  
<https://www.coloradorpm.com/available-rental-properties-denver>



1252 Cree Drive, Colorado Springs, CO 80915 – Lower Level



**TOTAL: 1676 sq. ft**  
Below Ground: 743 sq. ft, FLOOR 2: 933 sq. ft  
EXCLUDED AREAS: ROOM: 182 sq. ft, PORCH: 21 sq. ft, PATIO: 340 sq. ft  
Floor Plan Created By V1photos.com. Measurements Deamed Highly Reliable But Not Guaranteed.



Disclaimer: Sizes and Dimensions are Approximate, Actual May Vary.



**Taylor Haas**  
303-665-7368  
taylorh@coloradorpm.com  
<https://www.coloradorpm.com/available-rental-properties-denver>



# 1252 Cree Drive, Colorado Springs, CO 80915 – Main Level



**TOTAL: 1676 sq. ft**  
Below Ground: 743 sq. ft, FLOOR 2: 933 sq. ft  
EXCLUDED AREAS: ROOM: 182 sq. ft, PORCH: 21 sq. ft, PATIO: 340 sq. ft  
Floor Plan Created By V1photos.com, Measurements Deamed Highly Reliable But Not Guaranteed.



Disclaimer: Sizes and Dimensions are Approximate, Actual May Vary.



**Taylor Haas**  
303-665-7368  
taylorh@coloradorp.com  
<https://www.coloradorp.com/available-rental-properties-den>



# 1252 Cree Drive, Colorado Springs, CO 80915 – All Levels



**TOTAL: 1676 sq. ft**  
Below Ground: 743 sq. ft, FLOOR 2: 933 sq. ft  
EXCLUDED AREAS: ROOM: 182 sq. ft, PORCH: 21 sq. ft, PATIO: 340 sq. ft  
Floor Plan Created By V1photos.com, Measurements Deamed Highly Reliable But Not Guaranteed.



Disclaimer: Sizes and Dimensions are Approximate, Actual May Vary.



**Taylor Haas**  
303-665-7368  
taylorh@coloradorpm.com  
<https://www.coloradorpm.com/available-rental-properties-denver>

