



32555 Meadowridge Lane
 Pine, CO 80470
 COMMUNITY: Douglass Ranch

PRICE \$1,295,000

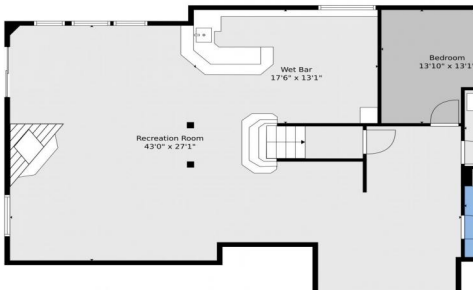
NICE PRICE IMPROVEMENT- NOW OFFERING AT \$1,375,000



lower level

main level

upper level



- Single Family
- 4534 SQFT
- 4 Beds
- 4 Baths
- 3 Car
- 5 Acre

PROPERTY DETAILS

Co-Op Compensation: 2.5% of final close price. Stunning mountain home on 5+ acres in Douglass Ranch neighborhood with views of Staunton State Park and surrounding mountains. Well-run community with custom homes, paved roads, and FireWise designation. Upgrades in past 2 years. Large living room, open floorplan, eat-in kitchen, separate dining room. Deck with gas line for grill. Main-level office, mud room/laundry, oversized 3-car garage. Finished basement with wet bar, gaming areas, guest suite. Upstairs primary suite with mountain views. 5 acres with beautiful landscaping. Friendly community. Shopping 5-10 minutes away, Denver 30 minutes. Upgrades include exterior paint, garage doors, windows, fireplace, appliances, furnace, water heater, forest mitigation. Amazing views!



K.C. Golfinopoulos
 720-750-2269
 mountainrealtykc@gmail.com
<https://mountainrealtycolorado.com/>

Scan code for more property details



32555 Meadowridge Lane, Pine, CO 80470 – all levels



TOTAL: 4262 sq. ft
BELOW GROUND: 1432 sq. ft, FLOOR 2: 1606 sq. ft, FLOOR 3: 1224 sq. ft
EXCLUDED AREAS: ELECTRICAL ROOM: 80 sq. ft, GARAGE: 623 sq. ft, BALCONY: 389 sq. ft,
FIREPLACE: 13 sq. ft, OPEN TO BELOW: 135 sq. ft

Floor Plan Created By V1photos.com, Measurements Deamed Highly Reliable But Not Guaranteed.



Disclaimer: Sizes and Dimensions are Approximate, Actual May Vary.



K.C. Golfopoulos
720-750-2269
mountainrealtykc@gmail.com
<https://mountainrealtycolorado.com/>



Scan code
for more
property
details

