

Red Slipper
Realty

4897 Wren Ct,
Frederick, CO 80504
COMMUNITY: Eagle Valley



Single Family



3119 SQFT



5 Beds



3/1 Baths



3 Car



0.24 Acre



Beverly Tompkins
303-523-4343
cloud_nine@q.com



Scan code
for more
property
details



4897 Wren Ct., Frederick, CO 80504 – Main Level



TOTAL: 2731 sq. ft
BELOW GROUND: 607 sq. ft, FLOOR 2: 961 sq. ft, FLOOR 3: 1163 sq. ft
EXCLUDED AREAS: ELECTRICAL ROOM: 50 sq. ft, STORAGE: 136 sq. ft, GARAGE: 545 sq. ft,
PORCH: 103 sq. ft, PATIO: 969 sq. ft, OPEN TO BELOW: 70 sq. ft

Floor Plan Created By V1photos.com, Measurements Deamed Highly Reliable But Not Guaranteed.



Disclaimer: Sizes and Dimensions are Approximate, Actual May Vary.



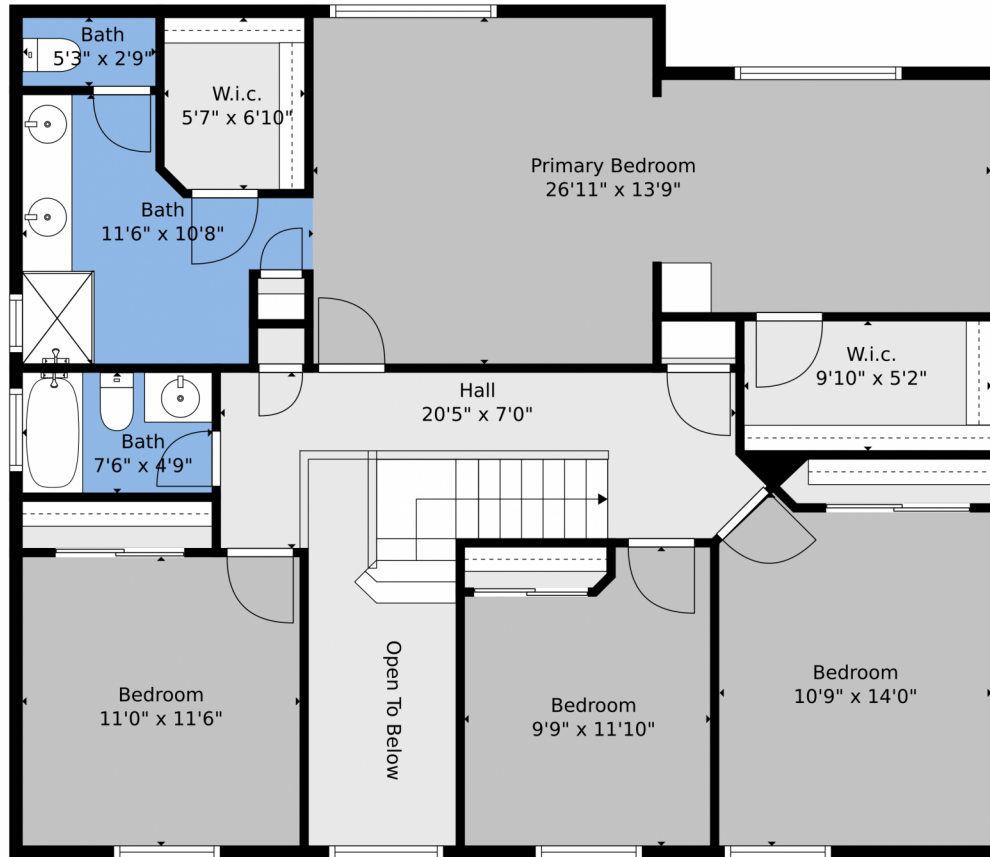
Beverly Tompkins
303-523-4343
cloud_nine@q.com



Scan code
for more
property
details



4897 Wren Ct., Frederick, CO 80504 – Upper Level



TOTAL: 2731 sq. ft
BELOW GROUND: 607 sq. ft, FLOOR 2: 961 sq. ft, FLOOR 3: 1163 sq. ft
EXCLUDED AREAS: ELECTRICAL ROOM: 50 sq. ft, STORAGE: 136 sq. ft, GARAGE: 545 sq. ft,
PORCH: 103 sq. ft, PATIO: 969 sq. ft, OPEN TO BELOW: 70 sq. ft

Floor Plan Created By V1photos.com, Measurements Deamed Highly Reliable But Not Guaranteed.



Disclaimer: Sizes and Dimensions are Approximate, Actual May Vary.

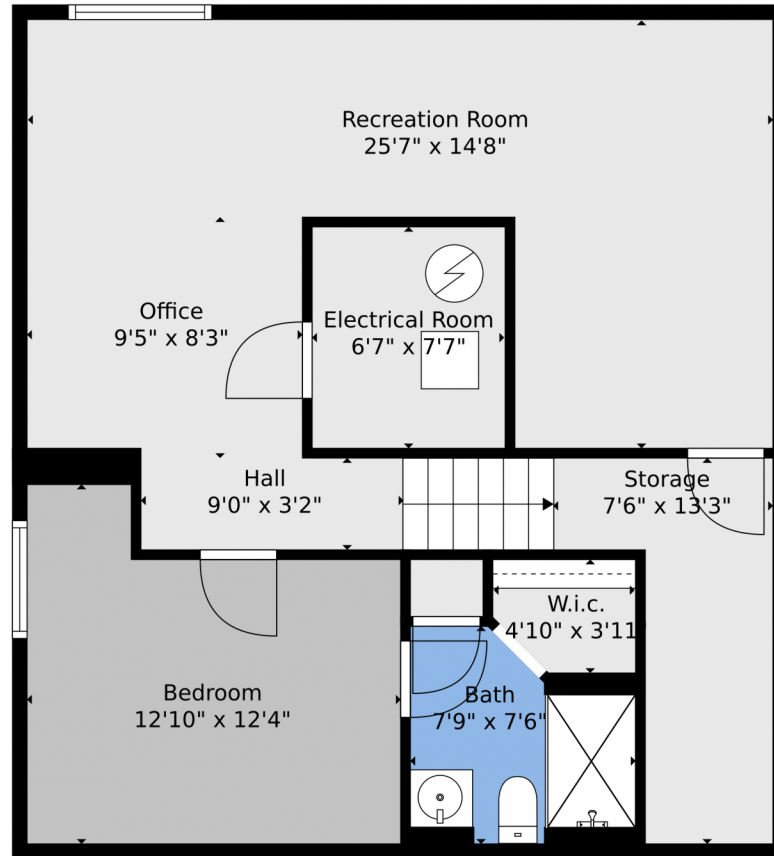


Beverly Tompkins
303-523-4343
cloud_nine@q.com



Scan code
for more
property
details

4897 Wren Ct., Frederick, CO 80504 – Lower Level



TOTAL: 2731 sq. ft
BELOW GROUND: 607 sq. ft, FLOOR 2: 961 sq. ft, FLOOR 3: 1163 sq. ft
EXCLUDED AREAS: ELECTRICAL ROOM: 50 sq. ft, STORAGE: 136 sq. ft, GARAGE: 545 sq. ft,
PORCH: 103 sq. ft, PATIO: 969 sq. ft, OPEN TO BELOW: 70 sq. ft
Floor Plan Created By V1photos.com, Measurements Deamed Highly Reliable But Not Guaranteed.



Disclaimer: Sizes and Dimensions are Approximate, Actual May Vary.



Beverly Tompkins
303-523-4343
cloud_nine@q.com



Scan code
for more
property
details

4897 Wren Ct., Frederick, CO 80504 – All Levels



TOTAL: 2731 sq. ft
 BELOW GROUND: 607 sq. ft, FLOOR 2: 961 sq. ft, FLOOR 3: 1163 sq. ft
 EXCLUDED AREAS: ELECTRICAL ROOM: 50 sq. ft, STORAGE: 136 sq. ft, GARAGE: 545 sq. ft,
 PORCH: 103 sq. ft, PATIO: 969 sq. ft, OPEN TO BELOW: 70 sq. ft

Floor Plan Created By V1photos.com, Measurements Deamed Highly Reliable But Not Guaranteed.



Disclaimer: Sizes and Dimensions are Approximate, Actual May Vary.



Beverly Tompkins
 303-523-4343
 cloud_nine@q.com

