



2962 Echo Lake Drive
 Loveland, CO 80538
 COMMUNITY: The Lakes @ Centerra



Single Family



3338 SQFT



6 Beds



3/1 Baths



3 Car



0.2 Acre



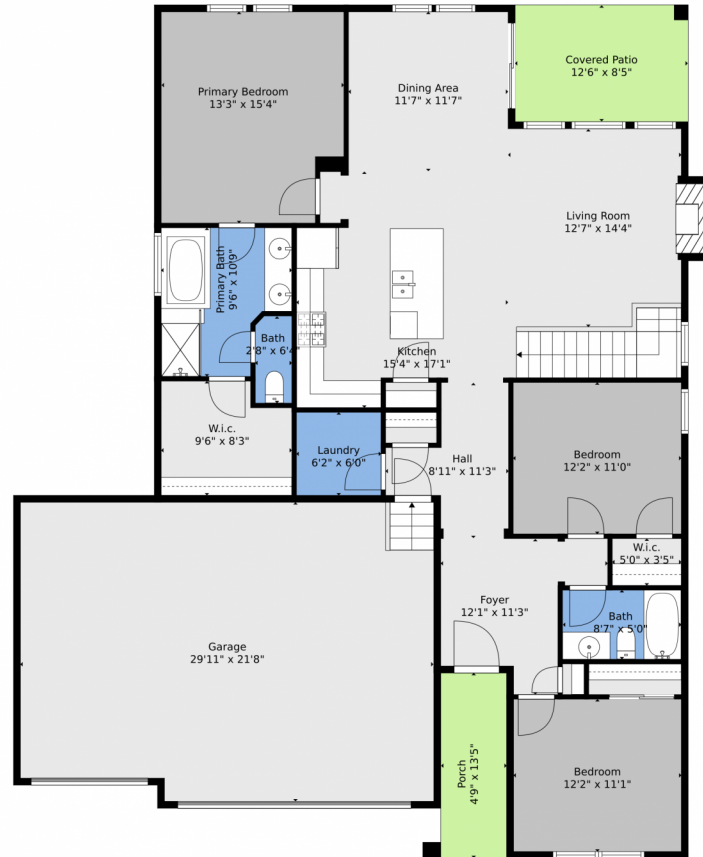
Cathy Burr
 303-887-2800
 cathyburr@remax.net



Scan code
 for more
 property
 details



2962 Echo Lake Drive, Loveland, CO 80538 – Main Level



TOTAL: 3019 sq. ft
BELOW GROUND: 1419 sq. ft, FLOOR 2: 1600 sq. ft
EXCLUDED AREAS: STORAGE: 22 sq. ft, ELECTRICAL ROOM: 55 sq. ft, ROOM: 39 sq. ft,
PORCH: 64 sq. ft, COVERED PATIO: 106 sq. ft, GARAGE: 633 sq. ft,
FIREPLACE: 13 sq. ft

Floor Plan Created By V1photos.com, Measurements Deamed Highly Reliable But Not Guaranteed.

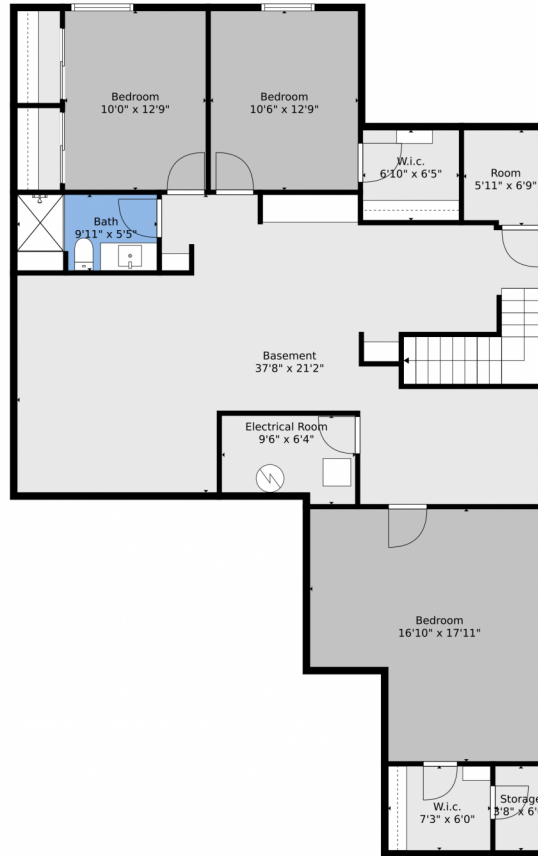
Disclaimer: Sizes and Dimensions are Approximate, Actual May Vary.



Cathy Burr
303-887-2800
cathyburr@remax.net



2962 Echo Lake Drive, Loveland, CO 80538 – Lower level



TOTAL: 3019 sq. ft
BELOW GROUND: 1419 sq. ft, FLOOR 2: 1600 sq. ft
EXCLUDED AREAS: STORAGE: 22 sq. ft, ELECTRICAL ROOM: 55 sq. ft, ROOM: 39 sq. ft,
PORCH: 64 sq. ft, COVERED PATIO: 106 sq. ft, GARAGE: 633 sq. ft,
FIREPLACE: 13 sq. ft

Floor Plan Created By V1photos.com, Measurements Deamed Highly Reliable But Not Guaranteed.

Disclaimer: Sizes and Dimensions are Approximate, Actual May Vary.



Cathy Burr
303-887-2800
cathyburr@remax.net



Scan code
for more
property
details

2962 Echo Lake Drive, Loveland, CO 80538 – All levels



TOTAL: 3019 sq. ft
 BELOW GROUND: 1419 sq. ft, FLOOR 2: 1600 sq. ft
 EXCLUDED AREAS: STORAGE: 22 sq. ft, ELECTRICAL ROOM: 55 sq. ft, ROOM: 39 sq. ft,
 PORCH: 64 sq. ft, COVERED PATIO: 106 sq. ft, GARAGE: 633 sq. ft,
 FIREPLACE: 13 sq. ft

Floor Plan Created By V1photos.com, Measurements Deamed Highly Reliable But Not Guaranteed.

Disclaimer: Sizes and Dimensions are Approximate, Actual May Vary.



Cathy Burr
 303-887-2800
 cathyburr@remax.net



Scan code
 for more
 property
 details

