



6328 Braun Way
 Arvada, CO 80004
 COMMUNITY: Wyndham Park


PRICE \$557,500



 Townhouse

 1900 SQFT

 2 Beds

 2/1 Baths

 2 Car

PROPERTY DETAILS

Discover the open and luminous Ranch-style townhome in sought-after West Arvada Wyndam Park. This corner unit ensures privacy and boasts stunning hardwood floors, a spacious office, and main floor laundry room. The kitchen features ample cabinets, pantry space, and a breakfast bar. The vaulted living room has a gas fireplace and access to a private patio. The primary bedroom has a walk-in closet and full bath. The finished basement adds value with an additional bedroom, full bath, and storage. Community amenities include a pool and trails. Don't miss this rare opportunity to own a Ranch-style home in this community.



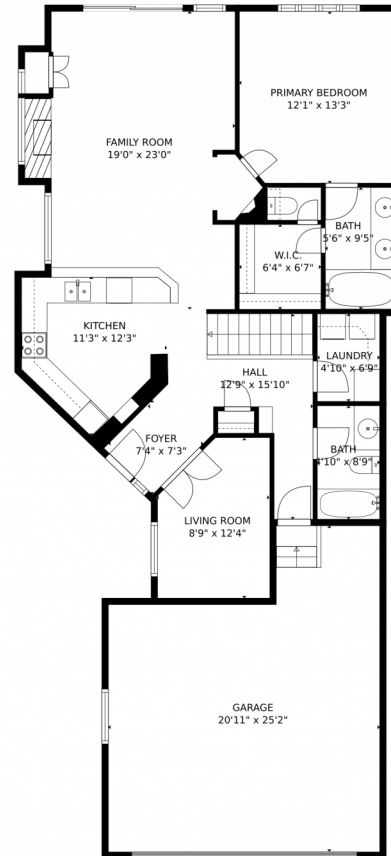
Valerie Skorka Westmark
 303-981-0950
 valeriewestmark@gmail.com
<https://valerie-skorka.remax.com/>



Scan code
 for more
 property
 details



6328 Braun Way, Arvada, CO 80004 — main level



TOTAL: 1744 sq. ft
BELOW GROUND: 672 sq. ft, FLOOR 2: 1072 sq. ft
EXCLUDED AREAS: GARAGE: 449 sq. ft

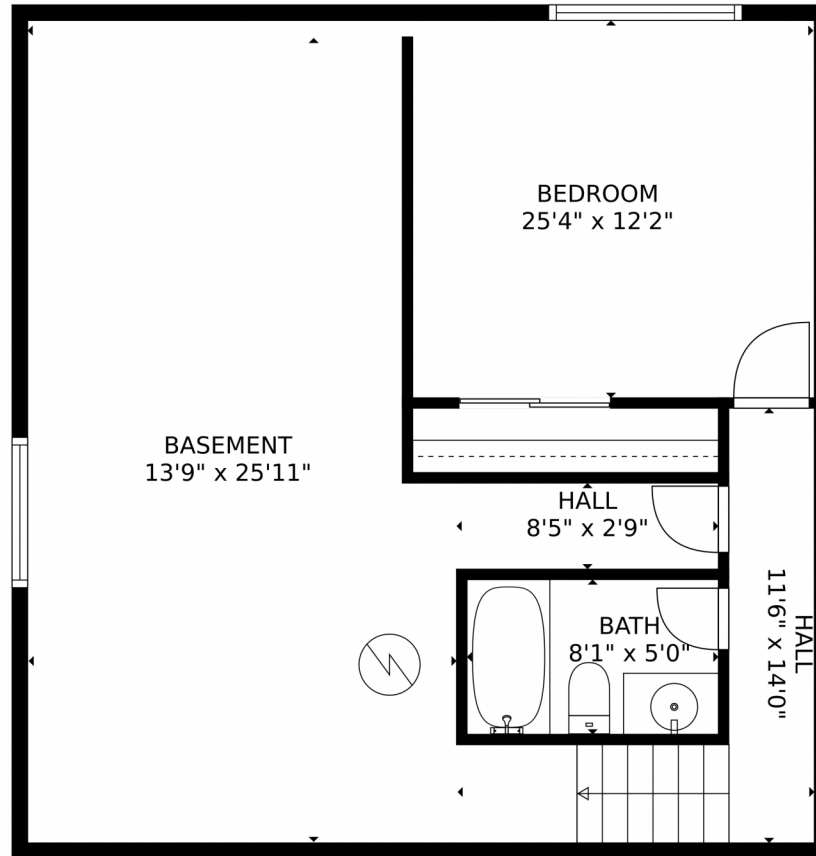
FLOOR PLAN CREATED BY CUBICASA APP. MEASUREMENTS DEEMED HIGHLY RELIABLE BUT NOT GUARANTEED.

Disclaimer: Sizes and Dimensions are Approximate, Actual May Vary.



Valerie Skorka Westmark
303-981-0950
valeriewestmark@gmail.com
<https://valerie-skorka.remax.com/>





TOTAL: 1744 sq. ft
BELOW GROUND: 672 sq. ft, FLOOR 2: 1072 sq. ft
EXCLUDED AREAS: GARAGE: 449 sq. ft

FLOOR PLAN CREATED BY CUBICASA APP. MEASUREMENTS DEEMED HIGHLY RELIABLE BUT NOT GUARANTEED.

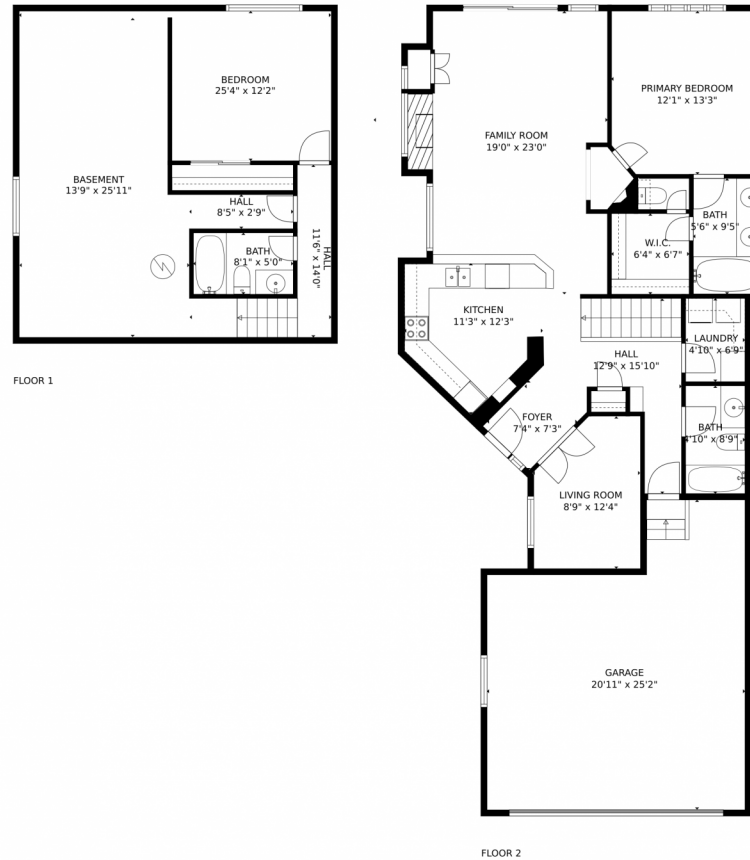
Disclaimer: Sizes and Dimensions are Approximate, Actual May Vary.



Valerie Skorka Westmark
303-981-0950
valeriewestmark@gmail.com
<https://valerie-skorka.remax.com/>



6328 Braun Way, Arvada, CO 80004 – all levels



TOTAL: 1744 sq. ft
BELOW GROUND: 672 sq. ft, FLOOR 2: 1072 sq. ft
EXCLUDED AREAS: GARAGE: 449 sq. ft

FLOOR PLAN CREATED BY CUBICASA APP. MEASUREMENTS DEEMED HIGHLY RELIABLE BUT NOT GUARANTEED.

Disclaimer: Sizes and Dimensions are Approximate, Actual May Vary.



Valerie Skorka Westmark
303-981-0950
valeriewestmark@gmail.com
<https://valerie-skorka.remax.com/>

